

Product Datasheet

FEM1B Antibody - BSA Free NBP1-77300

Unit Size: 0.1 mg

Store at 4C short term. Aliquot and store at -20C long term. Avoid freeze-thaw cycles.

www.novusbio.com



technical@novusbio.com

Protocols, Publications, Related Products, Reviews, Research Tools and Images at:
www.novusbio.com/NBP1-77300

Updated 3/4/2026 v.20.1

Earn rewards for product
reviews and publications.

Submit a publication at www.novusbio.com/publications

Submit a review at www.novusbio.com/reviews/destination/NBP1-77300



NBP1-77300

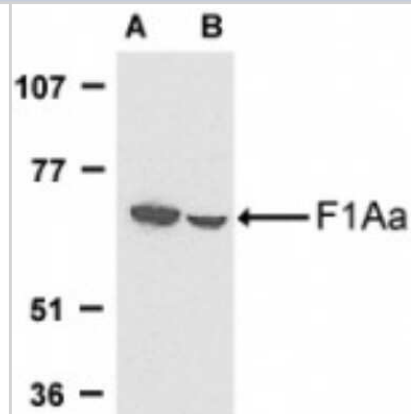
FEM1B Antibody - BSA Free

Product Information	
Unit Size	0.1 mg
Concentration	1 mg/ml
Storage	Store at 4C short term. Aliquot and store at -20C long term. Avoid freeze-thaw cycles.
Clonality	Polyclonal
Preservative	0.02% Sodium Azide
Isotype	IgG
Purity	Peptide affinity purified
Buffer	PBS
Target Molecular Weight	70 kDa
Product Description	
Host	Rabbit
Gene ID	10116
Gene Symbol	FEM1B
Species	Human, Mouse, Rat
Immunogen	Antibody was raised against a 14 amino acid peptide near the carboxy terminus of human F1A. The immunogen is located within the last 50 amino acids of F1A alpha. Amino Acid Squence: DINYQDQIPRTLEE
Product Application Details	
Applications	Western Blot, Immunohistochemistry-Paraffin, ELISA, Immunocytochemistry/Immunofluorescence, Immunohistochemistry
Recommended Dilutions	Western Blot 1 ug/ml, ELISA 1:100-1:2000, Immunohistochemistry 5 ug/ml, Immunocytochemistry/ Immunofluorescence 20 ug/mL, Immunohistochemistry-Paraffin 5 ug/ml
Application Notes	An approximately 70 kDa band can be detected in Western Blot.

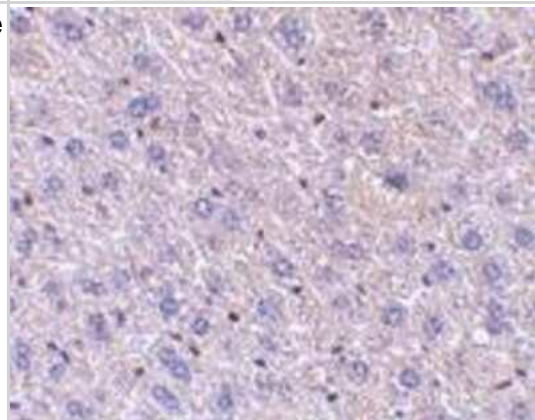


Images

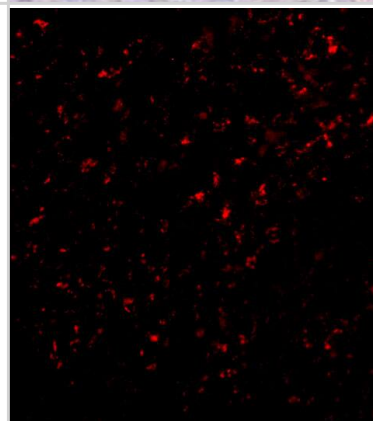
Western Blot: FEM1B Antibody [NBP1-77300] - Analysis of FEM1B in mouse (A) and rat (B) liver tissue lysates with anti- FEM1B using this antibody at 1 ug /ml.



Immunohistochemistry-Paraffin: FEM1B Antibody [NBP1-77300] - Mouse liver tissue with FEM1B antibody at 5 ug/ml.

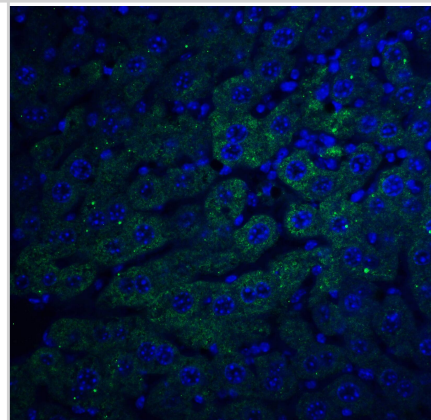


Immunocytochemistry/ Immunofluorescence: FEM1B Antibody - BSA Free [NBP1-77300] - Immunofluorescence of F1A alpha in Mouse Liver cells with F1A alpha antibody at 20 u/mL.



Immunocytochemistry/ Immunofluorescence: FEM1B Antibody - BSA Free [NBP1-77300] - Immunofluorescence of F1A alpha in mouse liver tissue with F1A alpha antibody at 20 ug/ml.

Green: F1A alpha Antibody
Blue: DAPI staining





Novus Biologicals USA

10730 E. Briarwood Avenue
Centennial, CO 80112
USA
Phone: 303.730.1950
Toll Free: 1.888.506.6887
Fax: 303.730.1966
nb-customerservice@bio-techne.com

Bio-Techne Canada

21 Canmotor Ave
Toronto, ON M8Z 4E6
Canada
Phone: 905.827.6400
Toll Free: 855.668.8722
Fax: 905.827.6402
canada.inquires@bio-techne.com

Bio-Techne Ltd

19 Barton Lane
Abingdon Science Park
Abingdon, OX14 3NB, United Kingdom
Phone: (44) (0) 1235 529449
Free Phone: 0800 37 34 15
Fax: (44) (0) 1235 533420
info.EMEA@bio-techne.com

General Contact Information

www.novusbio.com
Technical Support: nb-technical@bio-techne.com
Orders: nb-customerservice@bio-techne.com
General: novus@novusbio.com

Products Related to NBP1-77300

NBP1-77300PEP	FEM1B Antibody Blocking Peptide
HAF008	Goat anti-Rabbit IgG Secondary Antibody [HRP]
NB7160	Goat anti-Rabbit IgG (H+L) Secondary Antibody [HRP]
NBP2-24891	Rabbit IgG Isotype Control

Limitations

This product is for research use only and is not approved for use in humans or in clinical diagnosis. Primary Antibodies are guaranteed for 1 year from date of receipt.

For more information on our 100% guarantee, please visit www.novusbio.com/guarantee

Earn gift cards/discounts by submitting a review: www.novusbio.com/reviews/submit/NBP1-77300

Earn gift cards/discounts by submitting a publication using this product:
www.novusbio.com/publications

