

Product Datasheet

NHE1/SLC9A1 Antibody - BSA Free NBP1-76847

Unit Size: 0.1 mg

Store at 4C short term. Aliquot and store at -20C long term. Avoid freeze-thaw cycles.

www.novusbio.com



technical@novusbio.com

Publications: 3

Protocols, Publications, Related Products, Reviews, Research Tools and Images at:
www.novusbio.com/NBP1-76847

Updated 3/4/2026 v.20.1

Earn rewards for product
reviews and publications.

Submit a publication at www.novusbio.com/publications

Submit a review at www.novusbio.com/reviews/destination/NBP1-76847



NBP1-76847

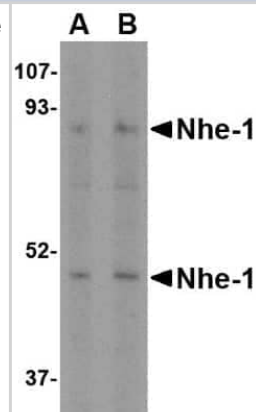
NHE1/SLC9A1 Antibody - BSA Free

Product Information	
Unit Size	0.1 mg
Concentration	1 mg/ml
Storage	Store at 4C short term. Aliquot and store at -20C long term. Avoid freeze-thaw cycles.
Clonality	Polyclonal
Preservative	0.02% Sodium Azide
Isotype	IgG
Purity	Peptide affinity purified
Buffer	PBS
Target Molecular Weight	50, 90 kDa
Product Description	
Host	Rabbit
Gene ID	6548
Gene Symbol	SLC9A1
Species	Human, Mouse, Rat
Specificity/Sensitivity	At least three isoforms of Nhe-1 are known to exist.
Immunogen	Antibody was raised against a 20 amino acid synthetic peptide near the carboxy terminus of the human Nhe-1. The immunogen is located within the last 50 amino acids of Nhe-1. Amino Acid Squence: CLSDPGPHPEPGEGEPFFPK
Product Application Details	
Applications	Western Blot, Immunohistochemistry-Paraffin, ELISA, Immunocytochemistry/Immunofluorescence, Immunohistochemistry
Recommended Dilutions	Western Blot 1-2 ug/ml, ELISA 1:100-1:2000, Immunohistochemistry 2.5 ug/mL, Immunocytochemistry/ Immunofluorescence 20 ug/ml, Immunohistochemistry-Paraffin 2-5 ug/ml

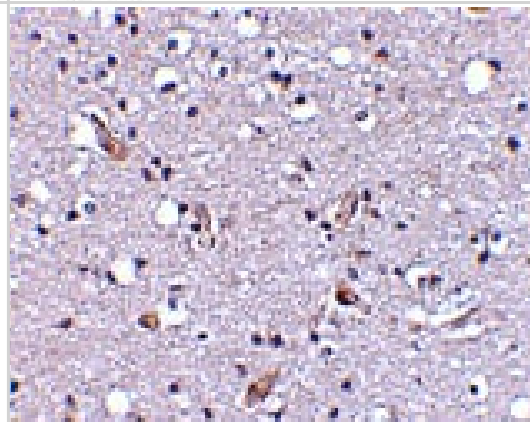


Images

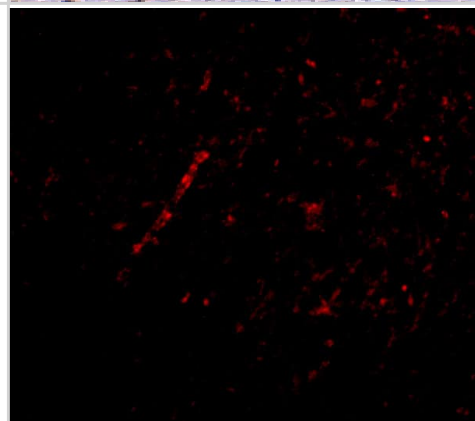
Western Blot: NHE1/SLC9A1 Antibody [NBP1-76847] - Rat kidney tissue lysate with in with Nhe-1 antibody at (A) 1 and (B) 2 ug/ml.



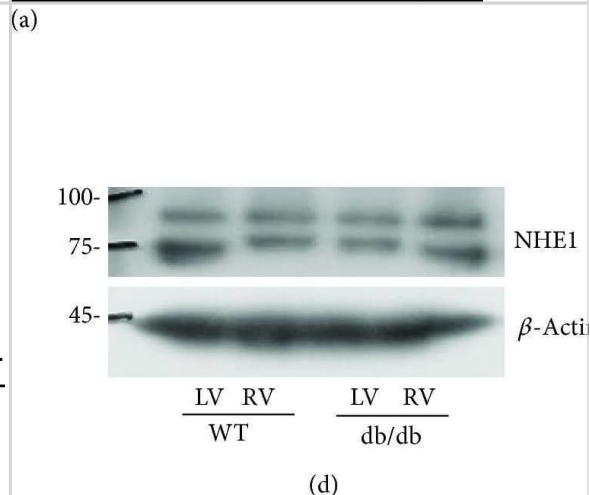
Immunohistochemistry: NHE1/SLC9A1 Antibody - BSA Free [NBP1-76847] - Immunohistochemical staining of human brain tissue using NHE1/SLC9A1 antibody at 2.5 ug/mL.



Immunocytochemistry/ Immunofluorescence: NHE1/SLC9A1 Antibody - BSA Free [NBP1-76847] - Immunofluorescence of NHE1/SLC9A1 in Human Brain tissue with NHE1/SLC9A1 antibody at 20 ug/mL.



Activity and protein expression of NHE1 between WT and db/db after HTK-induced arrest. (a) NHE activity was assessed by NH₄Cl pulse technique in LV cardiac strips of WT (closed black square) and db/db (closed red square) mice following cardioplegia-induced arrest. Full image of NHE activity was represented in the square box, and magnified images were obtained from the dotted line. (b) NHE activity in LV of WT after cardioplegia-induced arrest. (c) Analysis of NHE activity. The slope of pHi was measured in NHE activity in the Na⁺-containing Regular solution. The bars represent the mean \pm SEM (n = 3). (d) Expression of NHE1 protein in LV and RV cardiac strips of WT and db/db following cardioplegia-induced arrest. (e) Analysis of band intensity of NHE1 in LV. The β -actin was used as the loading control. The bars show the mean \pm SEM (n = 3). Image collected and cropped by CiteAb from the following open publication (<https://pubmed.ncbi.nlm.nih.gov/31582903>), licensed under a CC-BY license. Not internally tested by Novus Biologicals.



Publications

Irrera P, Roberto M, Consolino L et al. Effect of Esomeprazole Treatment on Extracellular Tumor pH in a Preclinical Model of Prostate Cancer by MRI-CEST Tumor pH Imaging Metabolites 2022-12-28 [PMID: 36676972] (WB, Human)

Anemone A, Consolino L, Conti L et al. Tumour acidosis evaluated in vivo by MRI-CEST pH imaging reveals breast cancer metastatic potential British journal of cancer 2020-12-01 [PMID: 33257841] (WB, Mouse)

Details:

Western blot analysis of TUBO cells.

Ferrauto G, Di Gregorio E, Auboiroux V et al. CEST-MRI for glioma pH quantification in mouse model: Validation by immunohistochemistry. NMR Biomed 2018-09-05 [PMID: 30256478] (IHC-P, Mouse)





Novus Biologicals USA

10730 E. Briarwood Avenue
Centennial, CO 80112
USA
Phone: 303.730.1950
Toll Free: 1.888.506.6887
Fax: 303.730.1966
nb-customerservice@bio-techne.com

Bio-Techne Canada

21 Canmotor Ave
Toronto, ON M8Z 4E6
Canada
Phone: 905.827.6400
Toll Free: 855.668.8722
Fax: 905.827.6402
canada.inquires@bio-techne.com

Bio-Techne Ltd

19 Barton Lane
Abingdon Science Park
Abingdon, OX14 3NB, United Kingdom
Phone: (44) (0) 1235 529449
Free Phone: 0800 37 34 15
Fax: (44) (0) 1235 533420
info.EMEA@bio-techne.com

General Contact Information

www.novusbio.com
Technical Support: nb-technical@bio-techne.com
Orders: nb-customerservice@bio-techne.com
General: novus@novusbio.com

Products Related to NBP1-76847

NBP1-76847PEP	NHE1/SLC9A1 Antibody Blocking Peptide
HAF008	Goat anti-Rabbit IgG Secondary Antibody [HRP]
NB7160	Goat anti-Rabbit IgG (H+L) Secondary Antibody [HRP]
NBP2-24891	Rabbit IgG Isotype Control

Limitations

This product is for research use only and is not approved for use in humans or in clinical diagnosis. Primary Antibodies are guaranteed for 1 year from date of receipt.

For more information on our 100% guarantee, please visit www.novusbio.com/guarantee

Earn gift cards/discounts by submitting a review: www.novusbio.com/reviews/submit/NBP1-76847

Earn gift cards/discounts by submitting a publication using this product:
www.novusbio.com/publications

