

Product Datasheet

SLPI Antibody - BSA Free NBP1-76803

Unit Size: 0.1 mg

Store at 4C short term. Aliquot and store at -20C long term. Avoid freeze-thaw cycles.

www.novusbio.com



technical@novusbio.com

Publications: 5

Protocols, Publications, Related Products, Reviews, Research Tools and Images at:
www.novusbio.com/NBP1-76803

Updated 3/4/2026 v.20.1

Earn rewards for product
reviews and publications.

Submit a publication at www.novusbio.com/publications

Submit a review at www.novusbio.com/reviews/destination/NBP1-76803



NBP1-76803

SLPI Antibody - BSA Free

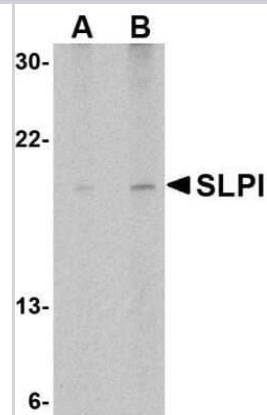
Product Information	
Unit Size	0.1 mg
Concentration	1 mg/ml
Storage	Store at 4C short term. Aliquot and store at -20C long term. Avoid freeze-thaw cycles.
Clonality	Polyclonal
Preservative	0.02% Sodium Azide
Isotype	IgG
Purity	Peptide affinity purified
Buffer	PBS
Target Molecular Weight	19 kDa

Product Description	
Host	Rabbit
Gene ID	6590
Gene Symbol	SLPI
Species	Human, Mouse
Immunogen	Antibody was raised against a 17 amino acid synthetic peptide from near the center of human SLPI. The immunogen is located within amino acids 60 - 110 of SLPI. Amino Acid Sequence: CLDPVDTPNPTRRKPGK

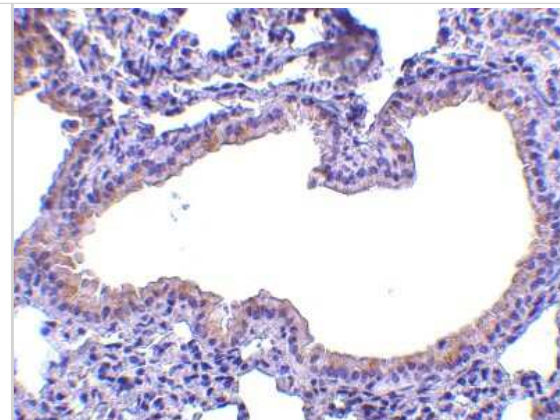
Product Application Details	
Applications	Western Blot, Immunohistochemistry-Paraffin, ELISA, Immunocytochemistry/Immunofluorescence, Immunohistochemistry
Recommended Dilutions	Western Blot 1-2 ug/ml, ELISA 1:100-1:2000, Immunohistochemistry 10 ug/ml, Immunocytochemistry/ Immunofluorescence, Immunohistochemistry-Paraffin 10 ug/ml
Application Notes	Use in ICC/IF reported in scientific literature (PMID: 28597116).

Images

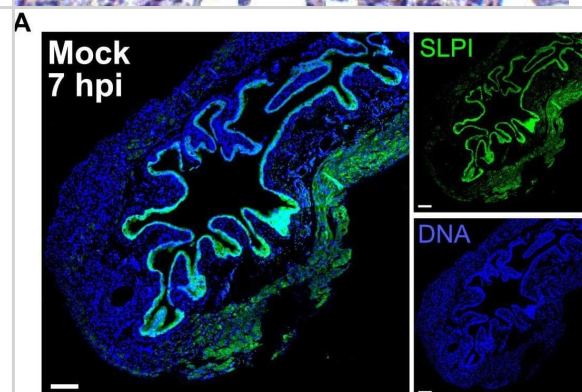
Western Blot: SLPI Antibody [NBP1-76803] - Daudi cell lysate with SLPI antibody at (A) 1 and (B) 2 ug/mL.



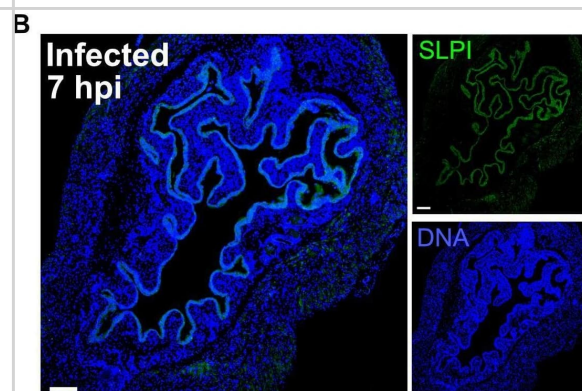
Immunohistochemistry-Paraffin: SLPI Antibody [NBP1-76803] - Mouse lung tissue with SLPI antibody at 10 ug/ml.



SLPI is expressed in the bladder epithelium. (A and B) Immunofluorescence staining of SLPI protein expression (green) and DNA using Hoechst stain (blue) in mock-infected (A) and infected (B) bladders from *Slpi*^{+/+} mice. Left panels (5× magnification, 200 μm scale bars) are merged images of SLPI and DNA shown as smaller panels on the right. (C–E) Mean fluorescence intensity (MFI) of mock and infected bladder epithelium for DNA (C) and SLPI (D) with MFI ratio of SLPI/DNA (E) (Student's t test). (F) Comparison of supernatant SLPI levels in control (PBS) or infected (UTI89) 5637 bladder epithelial cells represented as percent of starting SLPI in each well. (G) Fold change in *Slpi* transcription as measured by qRT-PCR in 5637 cells at 2 hpi. For panels F and G, shapes denote separate biological replicate experiments, each point represents the average of 4 or more individual wells (paired Student's t test). Image collected and cropped by CiteAb from the following open publication (<https://pubmed.ncbi.nlm.nih.gov/38270443>), licensed under a CC-BY license. Not internally tested by Novus Biologicals.



SLPI is expressed in the bladder epithelium. (A and B) Immunofluorescence staining of SLPI protein expression (green) and DNA using Hoechst stain (blue) in mock-infected (A) and infected (B) bladders from *Slpi*^{+/+} mice. Left panels (5× magnification, 200 μm scale bars) are merged images of SLPI and DNA shown as smaller panels on the right. (C–E) Mean fluorescence intensity (MFI) of mock and infected bladder epithelium for DNA (C) and SLPI (D) with MFI ratio of SLPI/DNA (E) (Student's t test). (F) Comparison of supernatant SLPI levels in control (PBS) or infected (UTI89) 5637 bladder epithelial cells represented as percent of starting SLPI in each well. (G) Fold change in *Slpi* transcription as measured by qRT-PCR in 5637 cells at 2 hpi. For panels F and G, shapes denote separate biological replicate experiments, each point represents the average of 4 or more individual wells (paired Student's t test). Image collected and cropped by CiteAb from the following open publication (<https://pubmed.ncbi.nlm.nih.gov/38270443>), licensed under a CC-BY license. Not internally tested by Novus Biologicals.



Publications

A Lebeau, D Bruyere, P Roncarati, P Peixoto, E Hervouet, G Cobraivill, B Taminiau, M Masson, C Gallego, G Mazzucchel, N Smargiasso, M Fleron, D Baiwir, E Hendrick, C Pilard, T Lerho, C Reynders, M Ancion, R Greimers, JC Twizere, G Daube, G Schlecht-L, F Bachelerie, JD Combes, P Melin, M Fillet, P Delvenne, P Hubert, M Herfs HPV infection alters vaginal microbiome through down-regulating host mucosal innate peptides used by Lactobacilli as amino acid sources *Nature Communications*, 2022-02-28;13(1):1076. 2022-02-28 [PMID: 35228537] (Immunocytochemistry/ Immunofluorescence, Human)

Anne L. Rosen, Michael A. Lint, Dayne H. Voelker, Nicole M. Gilbert, Christopher P. Tomera, Jesús Santiago-Borges, Meghan A. Wallace, Thomas J. Hannan, Carey-Ann D. Burnham, Scott J. Hultgren, Andrew L. Kau, Matthew R. Chapman Secretory leukocyte protease inhibitor protects against severe urinary tract infection in mice *mBio* 2024-02-01 [PMID: 38270443]

Rosen AL, Lint MA, Voelker DH et al. Secretory Leukocyte Protease Inhibitor Protects Against Severe Urinary Tract Infection in Mice *bioRxiv* : the preprint server for biology 2023-10-13 [PMID: 37873489] (IF/ICC, Mouse)

Liu C, Gong J, Zhang Q et al. Dietary iron modulates gut microbiota and induces SLPI secretion to promote colorectal tumorigenesis *Gut microbes* 2023-06-14 [PMID: 37312410] (WB, IHC-P, Mouse)

Svensson D, Aidoukovitch A, Anders E et al. Secretory leukocyte protease inhibitor regulates human periodontal ligament cell production of pro-inflammatory cytokines *Inflamm. Res.* 2017-09-01 [PMID: 28597116] (ICC/IF, Human)





Novus Biologicals USA

10730 E. Briarwood Avenue
Centennial, CO 80112
USA
Phone: 303.730.1950
Toll Free: 1.888.506.6887
Fax: 303.730.1966
nb-customerservice@bio-techne.com

Bio-Techne Canada

21 Canmotor Ave
Toronto, ON M8Z 4E6
Canada
Phone: 905.827.6400
Toll Free: 855.668.8722
Fax: 905.827.6402
canada.inquires@bio-techne.com

Bio-Techne Ltd

19 Barton Lane
Abingdon Science Park
Abingdon, OX14 3NB, United Kingdom
Phone: (44) (0) 1235 529449
Free Phone: 0800 37 34 15
Fax: (44) (0) 1235 533420
info.EMEA@bio-techne.com

General Contact Information

www.novusbio.com
Technical Support: nb-technical@bio-techne.com
Orders: nb-customerservice@bio-techne.com
General: novus@novusbio.com

Products Related to NBP1-76803

NBP1-76803PEP	SLPI Antibody Blocking Peptide
HAF008	Goat anti-Rabbit IgG Secondary Antibody [HRP]
NB7160	Goat anti-Rabbit IgG (H+L) Secondary Antibody [HRP]
NBP2-24891	Rabbit IgG Isotype Control

Limitations

This product is for research use only and is not approved for use in humans or in clinical diagnosis. Primary Antibodies are guaranteed for 1 year from date of receipt.

For more information on our 100% guarantee, please visit www.novusbio.com/guarantee

Earn gift cards/discounts by submitting a review: www.novusbio.com/reviews/submit/NBP1-76803

Earn gift cards/discounts by submitting a publication using this product:
www.novusbio.com/publications

