

Product Datasheet

PD-L2/B7-DC/PDCD1LG2 Antibody - BSA Free NBP1-76770

Unit Size: 0.1 mg

Store at 4C short term. Aliquot and store at -20C long term. Avoid freeze-thaw cycles.

www.novusbio.com



technical@novusbio.com

Reviews: 1 Publications: 1

Protocols, Publications, Related Products, Reviews, Research Tools and Images at:
www.novusbio.com/NBP1-76770

Updated 3/4/2026 v.20.1

**Earn rewards for product
reviews and publications.**

Submit a publication at www.novusbio.com/publications

Submit a review at www.novusbio.com/reviews/destination/NBP1-76770



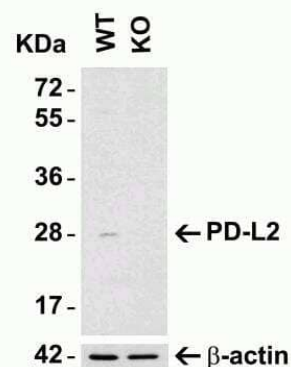
NBP1-76770

PD-L2/B7-DC/PDCD1LG2 Antibody - BSA Free

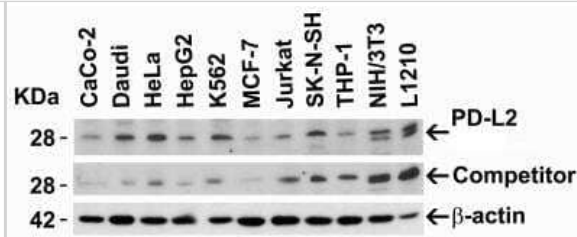
| Product Information | |
|-----------------------------|---|
| Unit Size | 0.1 mg |
| Concentration | 1 mg/ml |
| Storage | Store at 4C short term. Aliquot and store at -20C long term. Avoid freeze-thaw cycles. |
| Clonality | Polyclonal |
| Preservative | 0.02% Sodium Azide |
| Isotype | IgG |
| Purity | Peptide affinity purified |
| Buffer | PBS |
| Target Molecular Weight | 29 kDa |
| Product Description | |
| Host | Rabbit |
| Gene ID | 80380 |
| Gene Symbol | PDCD1LG2 |
| Species | Human, Mouse |
| Specificity/Sensitivity | Human PD-L2/B7-DC/PDCD1LG2 has 3 isoforms, including isoform 1 (273aa, 31kD), isoform 2 (183aa, 21kD) and isoform 3 (182aa, 21kD). Mouse PD-L2/B7-DC/PDCD1LG2 has one isoform (247aa, 28kD) and Rat PD-L2/B7-DC/PDCD1LG2 also has one isoform (268aa, 30kD). NBP1-76770 can detect human isoform and mouse isoform. |
| Immunogen | Antibody was raised against a peptide corresponding to 16 amino acids near the center of human PD-L2/B7-DC/PDCD1LG2. The immunogen is located within amino acids 140-190 of PD-L2/B7-DC/PDCD1LG2. Amino Acid Sequence: SVPANTSHSRTPEGLY |
| Product Application Details | |
| Applications | Western Blot, Immunohistochemistry-Paraffin, ELISA, Immunocytochemistry/Immunofluorescence, Immunohistochemistry |
| Recommended Dilutions | Western Blot 0.5-4 ug/mL, ELISA 1:100-1:2000, Immunohistochemistry 2.5 ug/mL, Immunocytochemistry/ Immunofluorescence 20 ug/mL, Immunohistochemistry-Paraffin |

Images

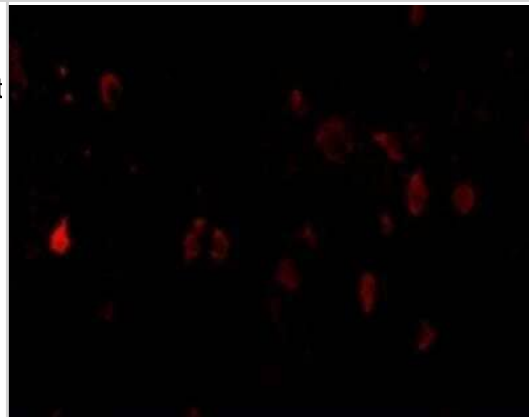
Western Blot: PD-L2/B7-DC/PDCD1LG2 Antibody [NBP1-76770] - Loading: 15 ug of HeLa WT cell lysates or PD-L2 KO cell lysates. Antibodies: PD-L2, 4063 (4 ug/mL) and beta-actin (1 ug/mL), 1 h incubation at RT in 5% NFDM/TBST. Secondary: Goat Anti-Rabbit IgG HRP conjugate at 1:10000 dilution



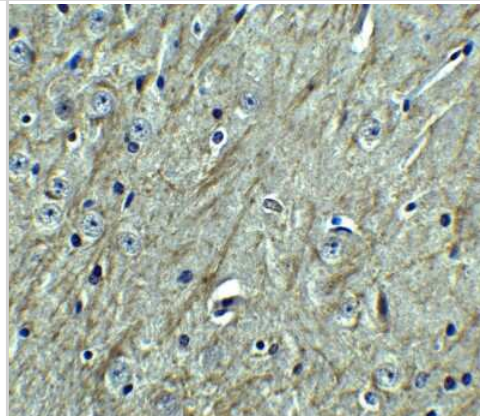
Western Blot: PD-L2/B7-DC/PDCD1LG2 Antibody [NBP1-76770] - Loading: 15 ug of lysates per lane. Antibodies: PD-L2 (4 ug/mL), competitor antibody (4 ug/mL), and beta-actin (1 ug/mL), 1h incubation at RT in 5% NFDN/TBST. Secondary: Goat anti-rabbit IgG HRP conjugate at 1:10000 dilution.



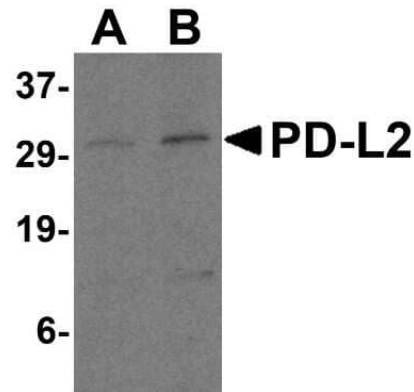
Immunocytochemistry/Immunofluorescence: PD-L2/B7-DC/PDCD1LG2 Antibody [NBP1-76770] - analysis of 4% paraformaldehydefixed mouse brain cells labeling PD-L2 with this antibody at 20ug/mL, followed by goat anti-rabbit IgG secondary antibody at 1/500 dilution (red).



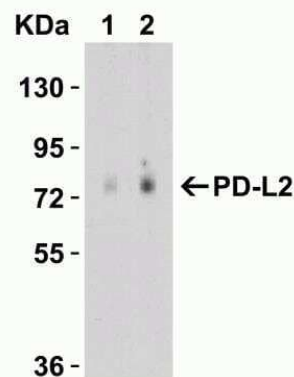
Immunohistochemistry: PD-L2/B7-DC/PDCD1LG2 Antibody [NBP1-76770] - Staining of mouse brain tissue with antibody at 2.5 ug/ml.



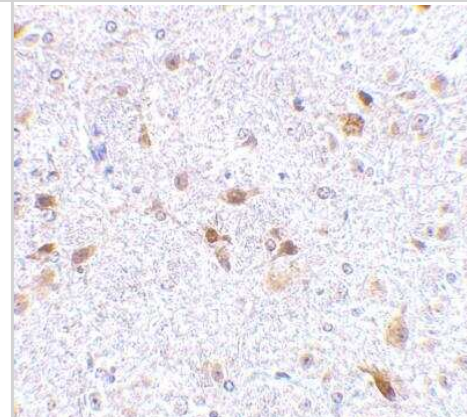
Western Blot: PD-L2/B7-DC/PDCD1LG2 Antibody [NBP1-76770] - Analysis of PD-L2 in Raji cell lysate with PD-L2 antibody at 0.5 and 1 ug/mL.



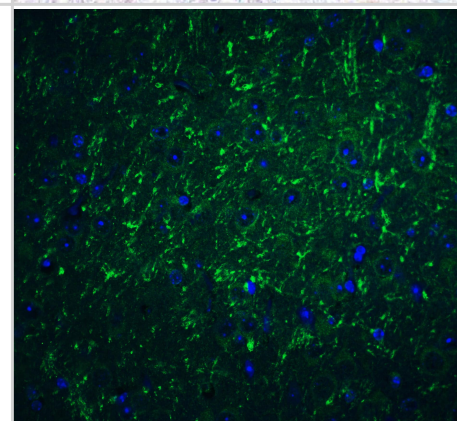
Western Blot: PD-L2/B7-DC/PDCD1LG2 Antibody [NBP1-76770] - Loading: 15 ug of HeLa WT cell lysates or PD-L2 KO cell lysates. Antibodies: PD-L2, NBP1-76770 (4 ug/mL) and beta-actin (1 ug/mL), 1 h incubation at RT in 5% NFDM/TBST. Secondary: Goat Anti-Rabbit IgG HRP conjugate at 1:10000 dilution.



Immunohistochemistry-Paraffin: PD-L2/B7-DC/PDCD1LG2 Antibody [NBP1-76770] - Mouse brain tissue.



Immunocytochemistry/ Immunofluorescence: PD-L2/B7-DC/PDCD1LG2 Antibody - BSA Free [NBP1-76770] - Validation of PD-L2/B7-DC/PDCD1LG2 in Mouse Brain Tissue. Immunofluorescent analysis of 4% paraformaldehyde-fixed mouse brain tissue labeling PD-L2/B7-DC/PDCD1LG2 with at 20 ug/mL, followed by goat anti-rabbit IgG secondary antibody at 1/500 dilution (green) and DAPI staining (blue).



Publications

Guo H, Zhang C, Shen YK et Al. PD-L2 mediates tobacco smoking-induced recruitment of regulatory T cells via the RGMB/NF κ B/CCL20 cascade Cell Biol Toxicol 2024-07-23 [PMID: 39042313]



Novus Biologicals USA

10730 E. Briarwood Avenue
Centennial, CO 80112
USA
Phone: 303.730.1950
Toll Free: 1.888.506.6887
Fax: 303.730.1966
nb-customerservice@bio-techne.com

Bio-Techne Canada

21 Canmotor Ave
Toronto, ON M8Z 4E6
Canada
Phone: 905.827.6400
Toll Free: 855.668.8722
Fax: 905.827.6402
canada.inquires@bio-techne.com

Bio-Techne Ltd

19 Barton Lane
Abingdon Science Park
Abingdon, OX14 3NB, United Kingdom
Phone: (44) (0) 1235 529449
Free Phone: 0800 37 34 15
Fax: (44) (0) 1235 533420
info.EMEA@bio-techne.com

General Contact Information

www.novusbio.com
Technical Support: nb-technical@bio-techne.com
Orders: nb-customerservice@bio-techne.com
General: novus@novusbio.com

Products Related to NBP1-76770

| | |
|---------------|---|
| NBP1-76770PEP | PD-L2/B7-DC/PDCD1LG2 Antibody Blocking Peptide |
| HAF008 | Goat anti-Rabbit IgG Secondary Antibody [HRP] |
| NB7160 | Goat anti-Rabbit IgG (H+L) Secondary Antibody [HRP] |
| NBP2-24891 | Rabbit IgG Isotype Control |

Limitations

This product is for research use only and is not approved for use in humans or in clinical diagnosis. Primary Antibodies are guaranteed for 1 year from date of receipt.

For more information on our 100% guarantee, please visit www.novusbio.com/guarantee

Earn gift cards/discounts by submitting a review: www.novusbio.com/reviews/submit/NBP1-76770

Earn gift cards/discounts by submitting a publication using this product:
www.novusbio.com/publications

