

Product Datasheet

PD-L1 Antibody - BSA Free NBP1-76769

Unit Size: 0.1 mg

Store at 4C short term. Aliquot and store at -20C long term. Avoid freeze-thaw cycles.

www.novusbio.com



technical@novusbio.com

Reviews: 5 **Publications: 42**

Protocols, Publications, Related Products, Reviews, Research Tools and Images at:
www.novusbio.com/NBP1-76769

Updated 9/9/2025 v.20.1

Earn rewards for product
reviews and publications.

Submit a publication at www.novusbio.com/publications

Submit a review at www.novusbio.com/reviews/destination/NBP1-76769



NBP1-76769

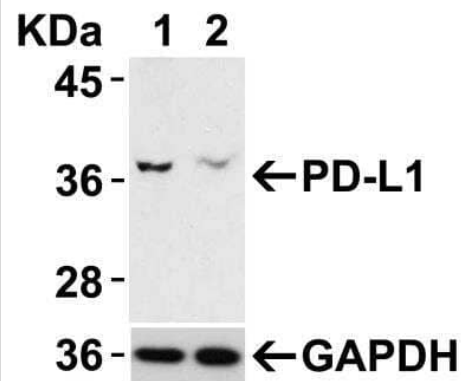
PD-L1 Antibody - BSA Free

Product Information	
Unit Size	0.1 mg
Concentration	1 mg/ml
Storage	Store at 4C short term. Aliquot and store at -20C long term. Avoid freeze-thaw cycles.
Clonality	Polyclonal
Preservative	0.02% Sodium Azide
Isotype	IgG
Purity	Peptide affinity purified
Buffer	PBS
Target Molecular Weight	37 kDa
Product Description	
Description	Novus Biologicals Rabbit PD-L1 Antibody - BSA Free (NBP1-76769) is a polyclonal antibody validated for use in IHC, WB, ELISA, Flow, Dual RNAscope ISH-IHC, ICC/IF and IP. Anti-PD-L1 Antibody: Cited in 39 publications. All Novus Biologicals antibodies are covered by our 100% guarantee.
Host	Rabbit
Gene ID	29126
Gene Symbol	CD274
Species	Human, Mouse, Rat
Specificity/Sensitivity	PD-L1 antibody has no cross-reactivity to PD-L2.
Immunogen	Antibody was raised against a 17 amino acid synthetic peptide from near the center of human PD-L1. The immunogen is located within amino acids 60-110 of PD-L1.
Product Application Details	
Applications	Western Blot, Immunohistochemistry-Paraffin, ELISA, Flow Cytometry, Immunocytochemistry/ Immunofluorescence, Immunohistochemistry, Immunohistochemistry-Frozen, Immunoprecipitation, Dual RNAscope ISH-IHC, Immunohistochemistry Whole-Mount, Knockdown Validated
Recommended Dilutions	Western Blot 1:1000, Flow Cytometry 0.5 ug/ml, ELISA 1:100 - 1:2000, Immunohistochemistry 1:10-1:500, Immunocytochemistry/ Immunofluorescence 1-5 ug/ml, Immunoprecipitation, Immunohistochemistry-Paraffin 1:10-1:500, Immunohistochemistry-Frozen, Immunohistochemistry Whole-Mount, Knockdown Validated, Dual RNAscope ISH-IHC
Application Notes	Use in Immunohistochemistry Whole-Mount reported in scientific literature (PMID:34944780). Use in ICC/IF reported in scientific literature (PMID:33220359) Use in IHC-Frozen was reported in scientific literature (PMID: 28402953). Use in immunoprecipitation reported in scientific literature (PMID: 28978117)..

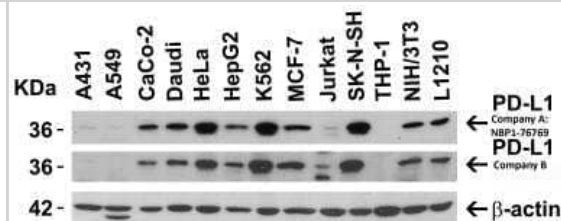


Images

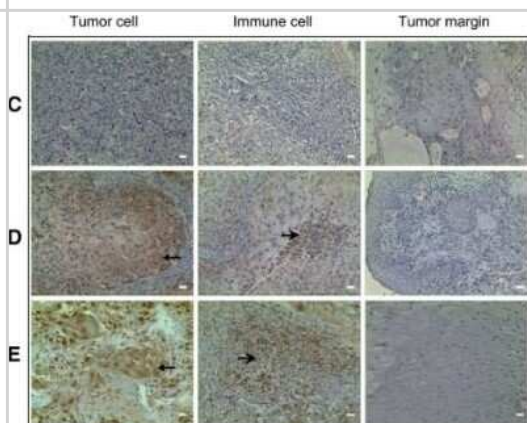
Western Blot: PD-L1 Antibody [NBP1-76769] - Validation with PD-L1 siRNA Knockdown. HeLa cells were transfected with control siRNAs (lane 1) or PD-L1 siRNAs (lane 2). Loading: 10 ug of HeLa whole cell lysates per lane. Antibodies: NBP1-76769 (2 ug/mL) and GAPDH (0.02 ug/mL), 1 h incubation at RT in 5% NFDm/TBST. Secondary: Goat anti-rabbit IgG HRP conjugate at 1:10000 dilution.



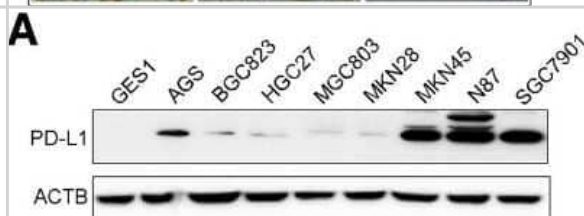
Western Blot: PD-L1 Antibody [NBP1-76769] - Independent Antibody Validation (IAV) via Protein Expression Profile Loading: 15 ug of lysates per lane. Antibodies: NBP1-76769 (2 ug/mL), PD-L1 (2 ug/mL), and beta-actin (1 ug/mL), 1 h incubation at RT in 5% NFDm/TBST. Secondary: Goat anti-rabbit and or anti-mouse IgG HRP conjugate at 1:10000 and 1:5000 dilution, respectively.



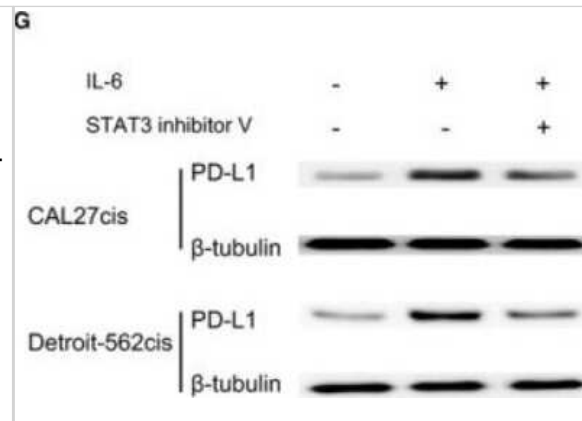
Immunohistochemistry-Paraffin: PD-L1 Antibody [NBP1-76769] - CD274 (PD-L1) expression in the HNSCC patients from the TCGA database, HNSCC tissue samples and the HNSCC cells. Immunostaining of PD-L1 obtained from HNSCC tumor cells, immune cells and tumor margin tissues in HNSCC tissue samples (magnification A-200, scale bars 50A11/4m): low tumor staining; moderate tumor staining; high tumor staining have been observed. Image collected and cropped by Citeab from the following publication (Lactoferricin B reverses cisplatin resistance in head and neck squamous cell carcinoma cells through targeting PD-L1. *Cancer Med* (2018)) licensed under a CC-BY license.



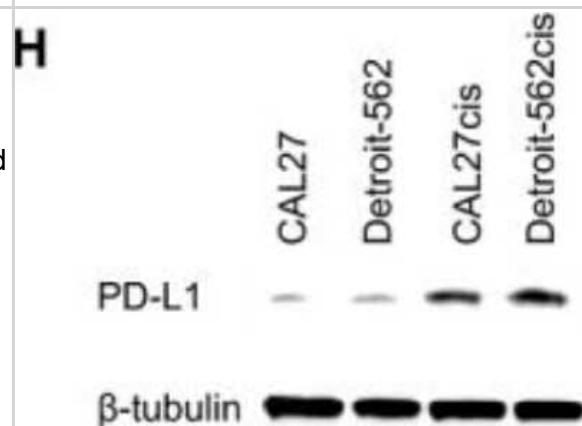
Western Blot: PD-L1 Antibody [NBP1-76769] - PD-L1 expression was evaluated in gastric cancer cells. Levels of PD-L1 protein were assessed in normal human gastric epithelial cells and 8 gastric cancer cell lines by Western blots. Image collected and cropped by Citeab from the following publication (Autophagy inhibition enhances PD-L1 expression in gastric cancer. *J Exp Clin Cancer Res* (2019)) licensed under a CC-BY license.



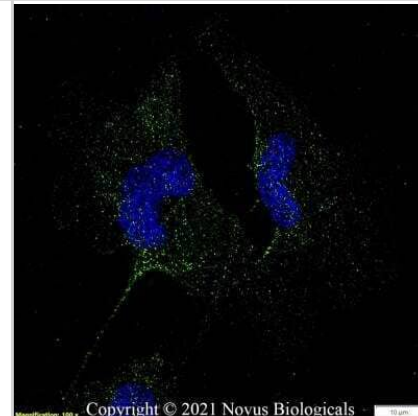
Western Blot: PD-L1 Antibody [NBP1-76769] - Upregulated expression of PD-L1 in cisplatin-resistant cells through IL-6/STAT3. Image collected and cropped by Citeab from the following publication (Lactoferricin B reverses cisplatin resistance in head and neck squamous cell carcinoma cells through targeting PD-L1. *Cancer Med* (2018)) licensed under a CC-BY license.



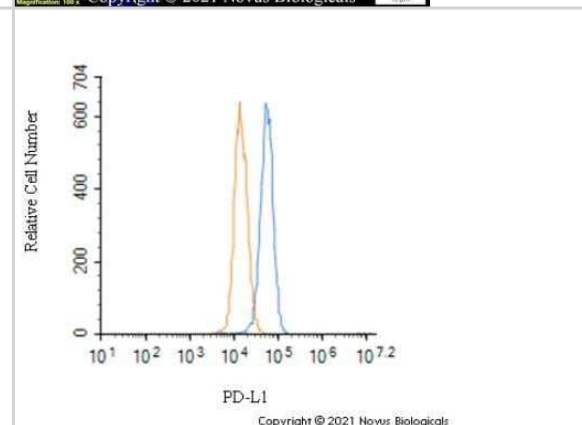
Western Blot: PD-L1 Antibody [NBP1-76769] - CD274 (PD-L1) expression in the HNSCC patients from the TCGA databas HNSCC cells. CD274 expression with survival and its relation with therapy in the HNSCC patients from the TCGA database. Expression of CD274 gene and PD-L1 protein in the established cisplatin-resistant HNSCC cells and cisplatin sensitive cells by qRT-PCR and WB (F, H): CD274 (PD-L1) expressed in cisplatin resistant cell. Image collected and cropped by Citeab from the following publication (Lactoferricin B reverses cisplatin resistance in head and neck squamous cell carcinoma cells through targeting PD-L1. *Cancer Med* (2018)) licensed under a CC-BY license.



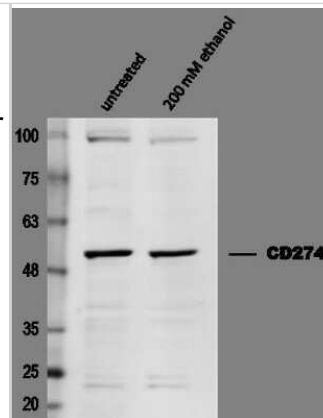
Immunocytochemistry/Immunofluorescence: PD-L1 Antibody [NBP1-76769] - U-251 MG cells were fixed in 4% paraformaldehyde for 10 minutes and permeabilized in 0.05% Triton X-100 in PBS for 5 minutes. The cells were incubated with anti- NBP1-76769 at 1 ug/ml overnight at 4C and detected with an anti-rabbit Dylight 488 (Green) at a 1:1000 dilution for 60 minutes. Nuclei were counterstained with DAPI (Blue). Cells were imaged using a 100X objective and digitally deconvolved.



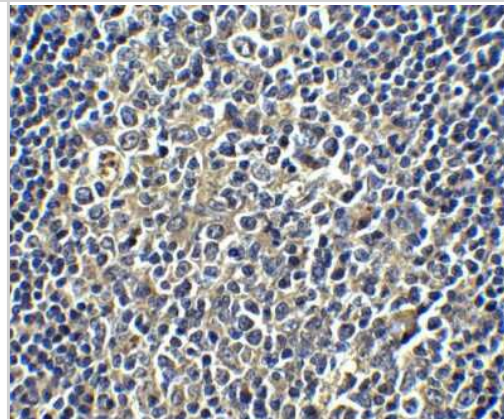
Flow Cytometry: PD-L1 Antibody [NBP1-76769] - An intracellular stain was performed on U-251 MG cells with PD-L1 Antibody NBP1-76769 (blue) and a matched isotype control NBP2-24891 (orange). Cells were fixed with 4% PFA and then permeabilized with 0.1% saponin. Cells were incubated in an antibody dilution of 2.5 ug/mL for 30 minutes at room temperature, followed by Rabbit IgG (H+L) Cross-Adsorbed Secondary Antibody, Dylight 550 (SA5-10033, Thermo Fisher).



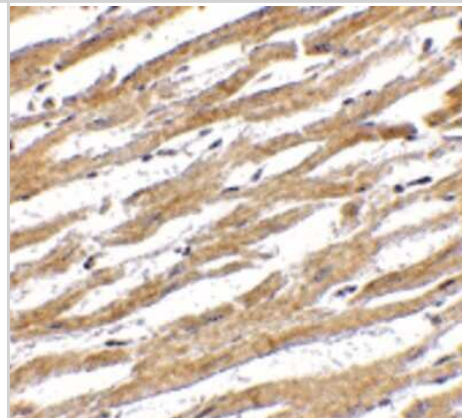
Western Blot: PD-L1 Antibody [NBP1-76769] - Expression of CD274 in Human melanoma SK-MEL-28 cell line upon treatment with 200 mM ethanol. Dilution: 1:1,000 in PBS with 5% BSA. Secondary Ab: anti-Rabbit IgG 1:5,000. Western blot image submitted by a verified customer review.



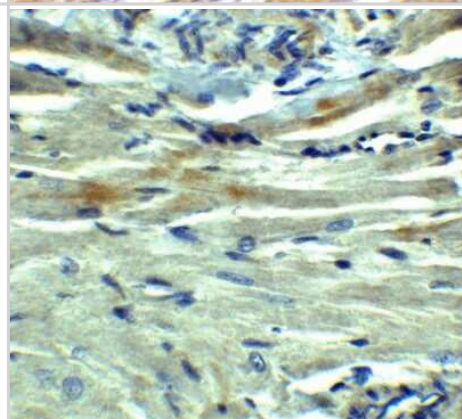
Immunohistochemistry-Paraffin: PD-L1 Antibody [NBP1-76769] - B7-H1/PD-L1/CD274 Antibody [NBP1-76769] - Human tonsil tissue with PD-L1 antibody at 5 ug/mL.



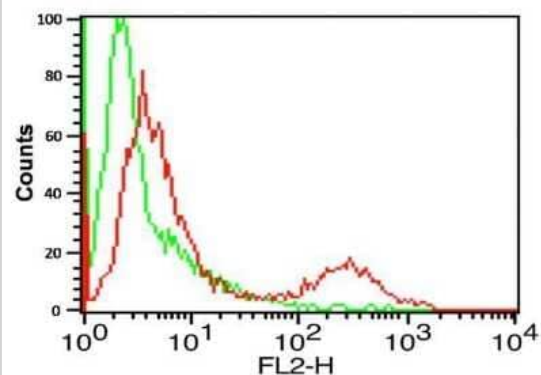
Immunohistochemistry-Paraffin: PD-L1 Antibody [NBP1-76769] - Staining of human heart tissue with antibody at 2.5 ug/mL.



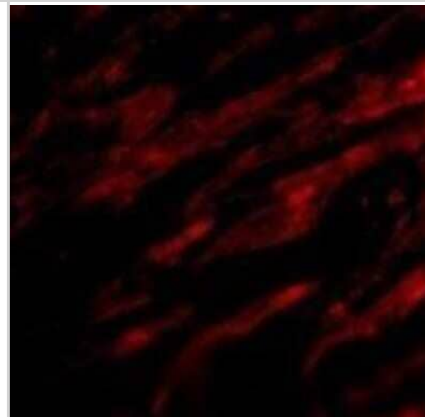
Immunohistochemistry-Paraffin: PD-L1 Antibody [NBP1-76769] - PD-L1/B7-H1 Antibody [NBP1-76769] - PD-L1 in rat heart tissue with at 5 ug/mL.



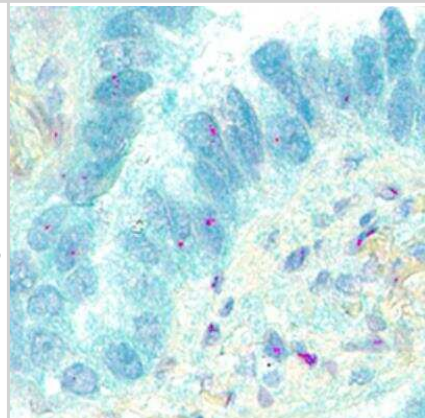
Flow Cytometry: PD-L1 Antibody [NBP1-76769] - B7-H1/PD-L1/CD274 Antibody [NBP1-76769] - Analysis of A-20 cells using B7-H1/PD-L1/CD274 antibody at 0.5 ug/mL. Green: Isotype control. Red : B7-H1/PD-L1/CD274 antibody.



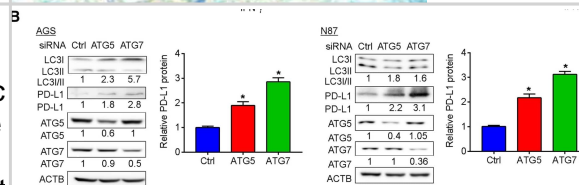
Immunofluorescence: PD-L1 Antibody [NBP1-76769] - Human Heart cells with PD-L1 antibody at 20 ug/mL.



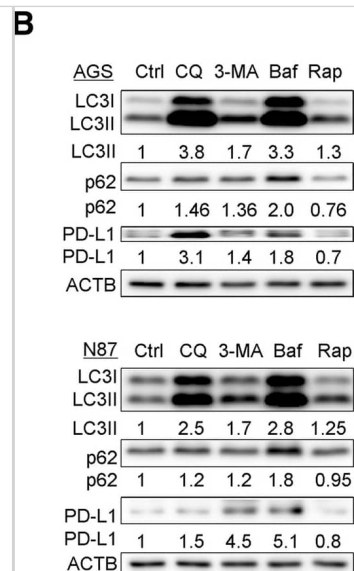
Dual RNAscope ISH-IHC: PD-L1 Antibody [NBP1-76769] - PDCD1 mRNA (red) and PD-L1 protein (green) were detected in formalin-fixed paraffin-embedded tissue sections of human lung cancer. ACD's Integrated Co-Detection Workflow was performed using ACD RNAscope Probe Hs-PDCD1 and PD-L1 antibody at 1:100 dilution. Tissue was stained on Leica Bond RX using RNAscope (TM) 2.5 LS Reagent Kit-RED, BOND Polymer Refine Detection (DAB) and Hematoxylin, BOND Polymer Refine Red Detection and Hematoxylin and RNAscope (TM) 2.5 LS Green Accessory Pack. Tissue was counterstained with 50% hematoxylin (blue).



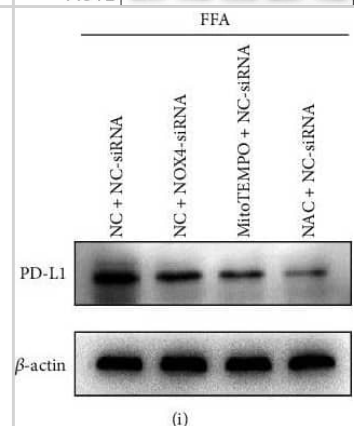
Abrogation of autophagy by siRNAs targeting autophagy-related genes in gastric cancer cells induced tumor-intrinsic PD-L1 expression. a Inhibition of autophagy by knockdown of ATG5 in AGS & NCI-n87 gastric cancer cells induced the expression of PD-L1 in the presence & absence of INF- γ (200 U/mL) as shown by flow cytometry analysis at 48 h post-transfection. b The induction of PD-L1 was confirmed by Western blots at 72 h post-transfection. The knockdown efficacies of ATG5 & ATG7 siRNA were verified. The conversion of LC3B-I to LC3B-II was reduced. Results were averaged & blots were representative of 4 independent experiments. The ratio of PD-L1 MFI minus isotype control was shown as mean \pm S.D. relative to Ctrl from 4 independent experiments, * p < 0.05 Image collected & cropped by CiteAb from the following publication (<https://pubmed.ncbi.nlm.nih.gov/30925913>), licensed under a CC-BY license. Not internally tested by Novus Biologicals.



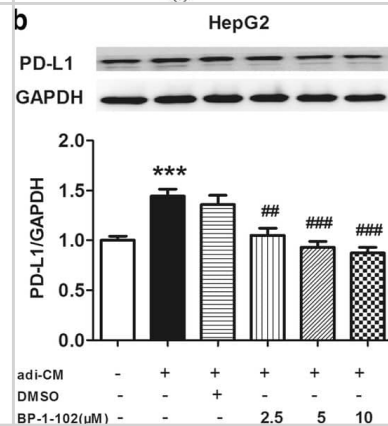
Effects of autophagy inhibitors in combination with IFN- γ on expression of PD-L1 in gastric cancer cell lines. a The effect of chloroquine (CQ) or 3-MA on expression of PD-L1 with or without INF- γ for 24 h was determined by flow cytometry assays. In AGS & NCI-n87 cells, MFI as the indication of PD-L1 expression level can be further increased by the treatment of INF- γ . b Levels of LC3B-I/II, p62/SQSTM1 & PD-L1 were determined by Western blots in AGS & NCI-n87 cells treated by CQ, 3-MA, bafilomycin A1 (Baf) or rapamycin (Rap) for 24 h. c Positive staining of PD-L1 (red) & LC3 positive puncta (green) was determined by immunofluorescence in AGS & NCI-n87 cells treated by autophagy inhibitors & activator as in (b). d Rapamycin decreased the levels of PD-L1 protein in AGS & NCI-n87 cells as shown by flow cytometry. Results were averaged & blots were representative of 4 independent experiments, * $p < 0.05$, ** $p < 0.01$ Image collected & cropped by CiteAb from the following publication (<https://pubmed.ncbi.nlm.nih.gov/30925913>), licensed under a CC-BY license. Not internally tested by Novus Biologicals.



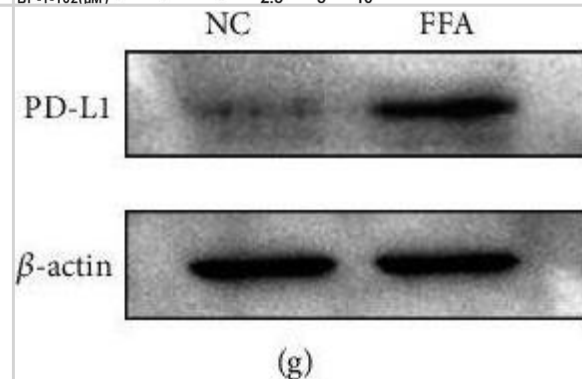
Western Blot: PD-L1 Antibody - BSA Free [NBP1-76769] - ROS mediated PD-L1 upregulation in FFA-treated LO2 cells. (a) Intracellular ROS in LO2 cells before & after FFA treatment measured by DCFH-DA. (b–d) Expression levels of NOX2 & NOX4 measured using qRT-PCR & western blot. (e) JC-1 probes were used to detect mitochondrial membrane potential. (f–j) Intracellular ROS in LO2 cells pretreated with siRNA against NOX4, MitoTEMPO (10 μ M), or NAC (5 mM) followed by FFA treatment, measured by DCFH-DA, PD-L1 expression determined by western blot. $\square \square P < 0.01$. Image collected & cropped by CiteAb from the following publication (<https://pubmed.ncbi.nlm.nih.gov/35615575>), licensed under a CC-BY license. Not internally tested by Novus Biologicals.



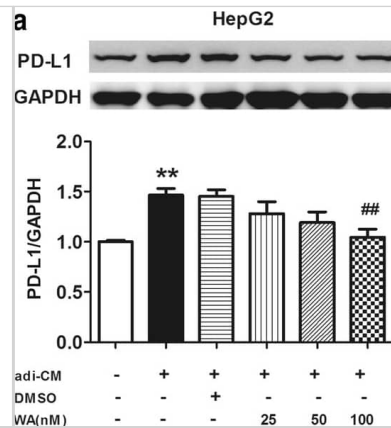
Western Blot: PD-L1 Antibody - BSA Free [NBP1-76769] - Inhibition of NF- κ B or STAT3 downregulated PD-L1 expression in adi-CM model. a PD-L1 protein levels in HepG2 cells treated with different concentration of NF- κ B inhibitor, withaferin A (WA). b PD-L1 protein levels in HepG2 cells treated with different concentration of STAT3 inhibitor, BP-1-102. c PD-L1 protein levels in B16-F1 cells incubated with WA. Data are expressed as mean \pm SEM, $n = 6$, ** $P < 0.01$, *** $P < 0.001$ Vs adi-CM group. ### $P < 0.01$ & #### $P < 0.001$ Vs DMSO group Image collected & cropped by CiteAb from the following publication (<https://pubmed.ncbi.nlm.nih.gov/32477009>), licensed under a CC-BY license. Not internally tested by Novus Biologicals.



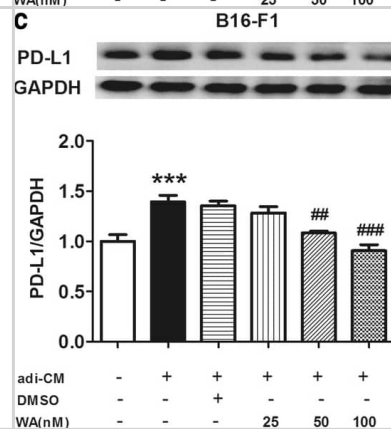
Western Blot: PD-L1 Antibody - BSA Free [NBP1-76769] - PD-L1 expression levels in liver samples & FFA-treated LO2 cells. (a–d) PD-L1 expression & CD8+ T cells in the liver tissues determined by immunohistochemistry. (e) Intracellular lipid accumulation after FFA treatment (0.8 mM) for 24 hour measured by Oil Red staining. (f–i) Expression levels of PD-L1 detected by qRT-PCR, western blot, & immunofluorescence. $\square \square P < 0.01$. Image collected & cropped by CiteAb from the following publication (<https://pubmed.ncbi.nlm.nih.gov/35615575>), licensed under a CC-BY license. Not internally tested by Novus Biologicals.



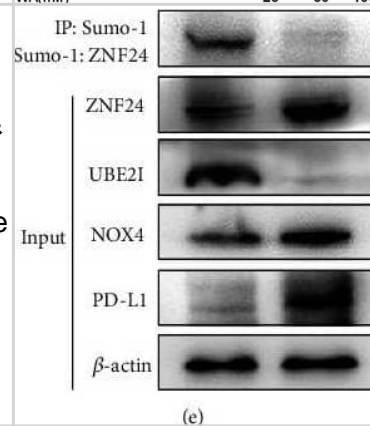
Western Blot: PD-L1 Antibody - BSA Free [NBP1-76769] - Inhibition of NF- κ B or STAT3 downregulated PD-L1 expression in adi-CM model. a PD-L1 protein levels in HepG2 cells treated with different concentration of NF- κ B inhibitor, withaferin A (WA). b PD-L1 protein levels in HepG2 cells treated with different concentration of STAT3 inhibitor, BP-1-102. c PD-L1 protein levels in B16-F1 cells incubated with WA. Data are expressed as mean \pm SEM, n = 6, **P < 0.01, ***P < 0.001 Vs adi-CM group. ##P < 0.01 & ###P < 0.001 Vs DMSO group Image collected & cropped by CiteAb from the following publication (<https://pubmed.ncbi.nlm.nih.gov/32477009>), licensed under a CC-BY license. Not internally tested by Novus Biologicals.



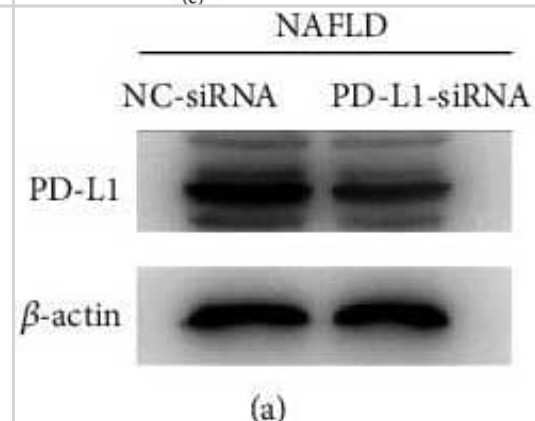
Western Blot: PD-L1 Antibody - BSA Free [NBP1-76769] - Inhibition of NF- κ B or STAT3 downregulated PD-L1 expression in adi-CM model. a PD-L1 protein levels in HepG2 cells treated with different concentration of NF- κ B inhibitor, withaferin A (WA). b PD-L1 protein levels in HepG2 cells treated with different concentration of STAT3 inhibitor, BP-1-102. c PD-L1 protein levels in B16-F1 cells incubated with WA. Data are expressed as mean \pm SEM, n = 6, **P < 0.01, ***P < 0.001 Vs adi-CM group. ##P < 0.01 & ###P < 0.001 Vs DMSO group Image collected & cropped by CiteAb from the following publication (<https://pubmed.ncbi.nlm.nih.gov/32477009>), licensed under a CC-BY license. Not internally tested by Novus Biologicals.



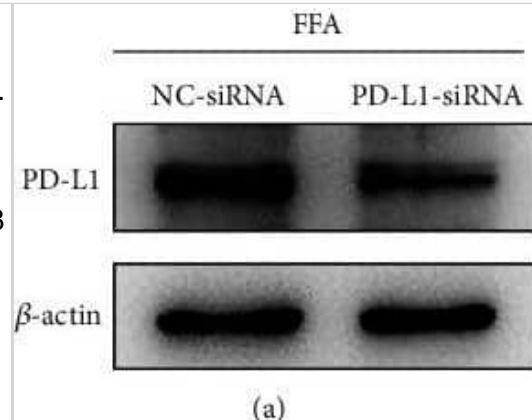
Western Blot: PD-L1 Antibody - BSA Free [NBP1-76769] - ROS/ZNF24/PD-L1 pathway activation in NAFLD models. (a) Intracellular ROS in hepatocytes in NAFLD significantly increased. (b) JC-1 probes were used to detect mitochondrial membrane potential. (c & d) NOX4 & ZNF24 expressions were determined by immunohistochemistry. (e & f) ROS/ZNF24/PD-L1 pathway activation examined by western blot. Image collected & cropped by CiteAb from the following publication (<https://pubmed.ncbi.nlm.nih.gov/35615575>), licensed under a CC-BY license. Not internally tested by Novus Biologicals.



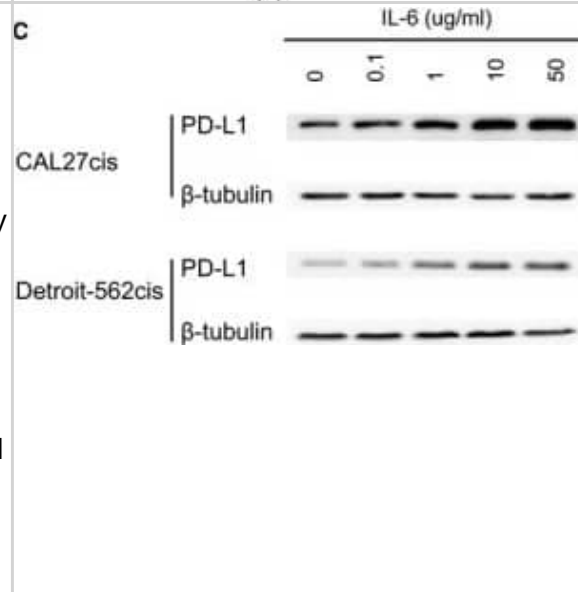
Western Blot: PD-L1 Antibody - BSA Free [NBP1-76769] - PD-L1 limits liver injury in NAFLD models. (a & b) Western blot determined the effect of siRNA against PD-L1. (c) After PD-L1 knockdown, mRNA expression levels of markers of T cell activation measured by qRT-PCR. (d & e) Hepatocyte injury was evaluated by the TUNEL assay & ALT/AST measurement. (f) Graph illustrating that both ROS/ZNF24 pathway activation & UBE2I-mediated ZNF24 sumoylation suppression induced by FFA promoted PD-L1 expression. □P < 0.05, □□P < 0.01. Image collected & cropped by CiteAb from the following publication (<https://pubmed.ncbi.nlm.nih.gov/35615575>), licensed under a CC-BY license. Not internally tested by Novus Biologicals.



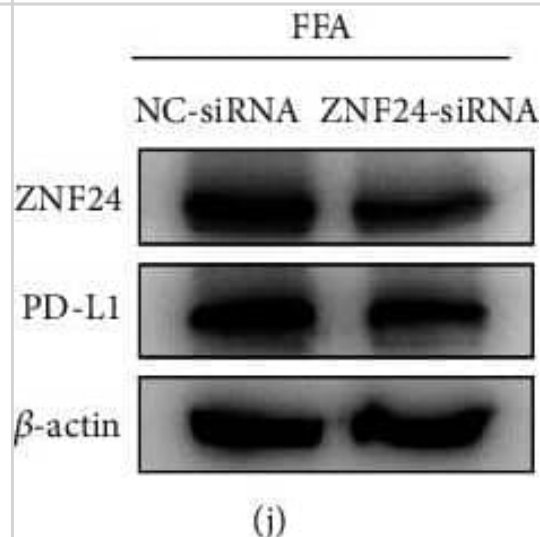
Western Blot: PD-L1 Antibody - BSA Free [NBP1-76769] - PD-L1 knockdown aggravated the damage of CD8 + T cells to FFA-treated LO2 cells. (a & b) Western blot determined the effect of siRNA against PD-L1. Coculturing of FFA-treated LO2 cells & CD8 + T cells in vitro. (c) mRNA expression levels of markers of T cell activation measured by qRT-PCR, (d) LO2 cell injury was evaluated by LDH assay, (e) AST or ALT in the supernatants measured by commercial assay kits. # represents that CD8 + T cells were incubated separately with LO2 cells, but supernatants were put together. □P < 0.05, □□P < 0.01. Image collected & cropped by CiteAb from the following publication (<https://pubmed.ncbi.nlm.nih.gov/35615575>), licensed under a CC-BY license. Not internally tested by Novus Biologicals.



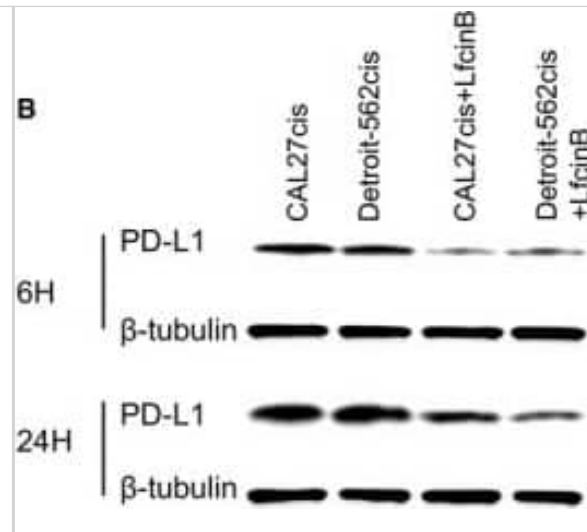
Western Blot: PD-L1 Antibody - BSA Free [NBP1-76769] - Upregulated expression of PD-L1 in cisplatin-resistant cells through IL-6/STAT3. The cisplatin resistant CAL27cis & Detroit562cis cells had increased IL-6 mRNA & IL-6 protein production compared to parental cells by qRT-PCR & ELISA (A, B). CAL27cis & Detroit562cis were cultured with IL-6 (10 ng/mL, human recombinant IL-6, R&D Systems, Minneapolis, USA) for 48 h (C). An anti-human IL-6 polyclonal antibody (R&D Systems, Minneapolis, USA) was used to neutralize the biological activities of IL-6 (E, F). To inhibit signal transduction, CAL27cis & Detroit562cis cells were pre-incubated for 1 h with STAT3 inhibitor V (Sigma-Aldrich, Germany, 500 nmol/L), & then incubated with recombinant human IL-6 (10 ng/mL) for 24 h before analysis. Data are shown as mean ± SD of 3 independent triplicate cultures (A, B, D, E, F, H). *P < .05, **P < .01 & ***P < .001, compared with the results of control without IL-6 (D), control IgG (E, F) & with IL-6 alone (H) Image collected & cropped by CiteAb from the following publication (<https://pubmed.ncbi.nlm.nih.gov/29761938>), licensed under a CC-BY license. Not internally tested by Novus Biologicals.



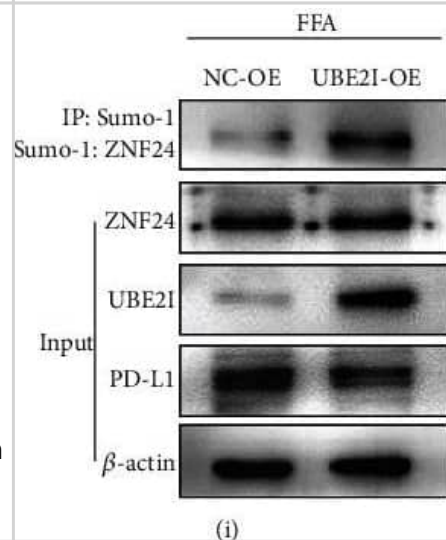
Western Blot: PD-L1 Antibody - BSA Free [NBP1-76769] - ZNF24 promoted PD-L1 expression through binding to its promoter in FFA-treated LO2 cells. (a) A schematic of the target sites (wild & mutant) of ZNF24 in the promoter of PD-L1. (b–d) Dual-luciferase reporter assays performed in LO2 cells transfected with WT or MT plasmid containing ZNF24-binding sites in the PD-L1 promoter using Lipofectamine 2000 after ZNF24 overexpression. (e–g) ZNF24 expression after FFA treatment determined by qRT-PCR & western blot. (h & i) ZNF24 expression in LO2 cells pretreated with siRNA against NOX4, MitoTEMPO (10 μM), or NAC (5 mM) followed by FFA treatment, measured by western blot. (j & k) ZNF24 & PD-L1 expression in LO2 cells pretreated with siRNA against ZNF24, followed by FFA treatment detected by western blot. □□P < 0.01. Image collected & cropped by CiteAb from the following publication (<https://pubmed.ncbi.nlm.nih.gov/35615575>), licensed under a CC-BY license. Not internally tested by Novus Biologicals.



Western Blot: PD-L1 Antibody - BSA Free [NBP1-76769] - LfcinB reduced IL-6 dependent PD-L1 expression in cisplatin resistant HNSCC cells (A-C) & inhibited the xenograft growth from CAL27cis & Detroit-562cis (D, E). The markedly decreased IL-6 (A) by ELISA & PD-L1 by WB (B, C) in the acquired cisplatin resistant cells were detected. In figure A, C & D, data are shown as mean \pm SD of 3 independent triplicate cultures. *P < .05 & **P < .01, compared with the results of control without IL-6 (A, C). To investigate the effects of LfcinB on in vivo growth of CAL27cis & Detroit-562cis, we treated nude mice carrying CAL27cis (D) & Detroit-562cis (E) xenografts with once-daily injection of 0.75 mg LfcinB (n = 5). Tumor growth of HNSCC xenografts displayed significant reduction after 3 days of LfcinB treatment, compared to control with saline (*P < .05 for LfcinB) Image collected & cropped by CiteAb from the following publication (<https://pubmed.ncbi.nlm.nih.gov/29761938>), licensed under a CC-BY license. Not internally tested by Novus Biologicals.



Western Blot: PD-L1 Antibody - BSA Free [NBP1-76769] - Identification of ZNF24-UBE2I protein interactions. (a & b) Analysis of protein interactions between ZNF24 & UBE2I using the BioGRID database, further confirmed by Co-IP assays. (c-f) UBE2I expression in LO2 cells treated by FFA or pretreated with siRNA against NOX4, MitoTEMPO (10 μ M), or NAC (5 mM) followed by FFA treatment measured by western blot. (g & h) After FFA treatment, Sumo-1: ZNF24 & ZNF24 expression levels detected by western blot. (i & j) After UBE2I overexpression, Sumo-1: ZNF24, ZNF24, PD-L1, & UBE2I expression levels were determined by western blot. (k-m) Dual-luciferase reporter assays performed in LO2 cells transfected with WT plasmid containing ZNF24-binding sites in the PD-L1 promoter using Lipofectamine 2000 after ZNF24 overexpression with or without Sumo-1 overexpression. *P < 0.01. Image collected & cropped by CiteAb from the following publication (<https://pubmed.ncbi.nlm.nih.gov/35615575>), licensed under a CC-BY license. Not internally tested by Novus Biologicals.



PD-L1 was detected in immersion fixed U-2 OS human osteosarcoma cell line using Rabbit anti-PD-L1 Antigen Affinity Purified Polyclonal Antibody conjugated to Alexa Fluor® 647 (Catalog # NBP1-76769AF647) (light blue) at 10 μ g/mL overnight at 4C. Cells were counterstained with DAPI (blue). Cells were imaged using a 100X objective and digitally deconvolved.



Publications

Marrone L, Giacomo V, Malasomma C et al. Exploring the potential of selective FKBP51 inhibitors on melanoma: an investigation of their in vitro and in vivo effects *Cell Death Discovery* 2025-04-03 [PMID: 40180895]

Hu M, Liu T, Huang H et al. Extracellular matrix proteins refine microenvironments for pancreatic organogenesis from induced pluripotent stem cell differentiation *Theranostics* 2025-01-13 [PMID: 39990212]

Zhang J, Qi J, Wei H et al. TGF β 1 in Cancer-Associated Fibroblasts Is Associated With Progression and Radiosensitivity in Small-Cell Lung Cancer *Frontiers in Cell and Developmental Biology* 2021-05-20 [PMID: 34095135] (Immunohistochemistry-Paraffin, Human)

Holokai L, Chakrabarti J, Broda T et al. Increased Programmed Death-Ligand 1 is an Early Epithelial Cell Response to *Helicobacter pylori* Infection *PLoS Pathog.* 2019-01-01 [PMID: 30703170] (Immunohistochemistry-Paraffin, Human)

Jin Y, Zuo HX, Li MY et al. Anti-Tumor Effects of Carrimycin and Monomeric Isovalerylspiramycin I on Hepatocellular Carcinoma in Vitro and in Vivo *Frontiers in Pharmacology* 2021-11-26 [PMID: 34899336] (Immunohistochemistry-Paraffin, Human)

Dong G, Huang X, Chen R et al. Increased PD-L1 Restricts Liver Injury in Nonalcoholic Fatty Liver Disease *Oxidative Medicine and Cellular Longevity* 2022-05-16 [PMID: 35615575] (Immunohistochemistry-Paraffin, Human)

Mei-Chih Chen, Meng-Yu Hung, Chih-Ming Pan, Shi-Wei Huang, Chia-Ing Jan, Yu-Hsuan Li, Shao-Chih Chiu, Der-Yang Cho Pemetrexed combined with dual immune checkpoint blockade enhances cytotoxic T lymphocytes against lung cancer *Cancer Science* 2023-04-19 [PMID: 37017116]

Zhong Y, Li MY, Han L et al. Galangin inhibits programmed cell death-ligand 1 expression by suppressing STAT3 and MYC and enhances T cell tumor-killing activity *Phytomedicine : international journal of phytotherapy and phytopharmacology* 2023-07-01 [PMID: 37267692] (WB, Human)

Details:

1:2000 WB dilution

Caron JM, Han X, Lary CW et al. Targeting the secreted RGDKGE collagen fragment reduces PD β L1 by a proteasome-dependent mechanism and inhibits tumor growth *Oncology reports* 2023-02-01 [PMID: 36633146] (ICC/IF, Mouse)

Riondato F, Colitti B, Rosati S et al. A method to test antibody cross-reactivity toward animal antigens for flow cytometry *Cytometry. Part A : the journal of the International Society for Analytical Cytology* 2022-09-26 [PMID: 36161760]

Dong M, Qian M, Ruan Z CUL3/SPOP complex prevents immune escape and enhances chemotherapy sensitivity of ovarian cancer cells through degradation of PD-L1 protein *Journal for immunotherapy of cancer* 2022-10-01 [PMID: 36198437] (IP, WB, Human)

Sakuma K, Kii T, Takahashi H et al. An In Vivo Study of Local Administration of Low-dose Anti-PD-1 Antibody Using an Oral Cancer Cell Line *Anticancer research* 2022-09-01 [PMID: 36039414]

More publications at <http://www.novusbio.com/NBP1-76769>



Novus Biologicals USA

10730 E. Briarwood Avenue
Centennial, CO 80112
USA
Phone: 303.730.1950
Toll Free: 1.888.506.6887
Fax: 303.730.1966
nb-customerservice@bio-techne.com

Bio-Techne Canada

21 Canmotor Ave
Toronto, ON M8Z 4E6
Canada
Phone: 905.827.6400
Toll Free: 855.668.8722
Fax: 905.827.6402
canada.inquires@bio-techne.com

Bio-Techne Ltd

19 Barton Lane
Abingdon Science Park
Abingdon, OX14 3NB, United Kingdom
Phone: (44) (0) 1235 529449
Free Phone: 0800 37 34 15
Fax: (44) (0) 1235 533420
info.EMEA@bio-techne.com

General Contact Information

www.novusbio.com
Technical Support: nb-technical@bio-techne.com
Orders: nb-customerservice@bio-techne.com
General: novus@novusbio.com

Products Related to NBP1-76769

NBP1-76769PEP-0.1mg	PD-L1 Antibody Blocking Peptide
NBP2-33376H	Blue Marker Antibody (6F4-F6) [HRP]
HAF008	Goat anti-Rabbit IgG Secondary Antibody [HRP]
NB7160	Goat anti-Rabbit IgG (H+L) Secondary Antibody [HRP]
NBP2-24891	Rabbit IgG Isotype Control

Limitations

This product is for research use only and is not approved for use in humans or in clinical diagnosis. Primary Antibodies are guaranteed for 1 year from date of receipt.

For more information on our 100% guarantee, please visit www.novusbio.com/guarantee

Earn gift cards/discounts by submitting a review: www.novusbio.com/reviews/submit/NBP1-76769

Earn gift cards/discounts by submitting a publication using this product:
www.novusbio.com/publications

