

Product Datasheet

Bcl-2 related protein A1 Antibody - BSA Free NBP1-76715

Unit Size: 0.1 mg

Store at 4C short term. Aliquot and store at -20C long term. Avoid freeze-thaw cycles.

www.novusbio.com



technical@novusbio.com

Publications: 1

Protocols, Publications, Related Products, Reviews, Research Tools and Images at:
www.novusbio.com/NBP1-76715

Updated 3/4/2026 v.20.1

Earn rewards for product
reviews and publications.

Submit a publication at www.novusbio.com/publications

Submit a review at www.novusbio.com/reviews/destination/NBP1-76715



NBP1-76715

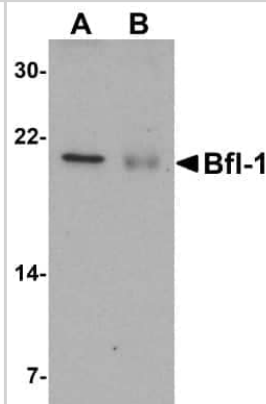
Bcl-2 related protein A1 Antibody - BSA Free

Product Information	
Unit Size	0.1 mg
Concentration	1 mg/ml
Storage	Store at 4C short term. Aliquot and store at -20C long term. Avoid freeze-thaw cycles.
Clonality	Polyclonal
Preservative	0.02% Sodium Azide
Isotype	IgG
Purity	Peptide affinity purified
Buffer	PBS
Target Molecular Weight	20 kDa
Product Description	
Host	Rabbit
Gene ID	597
Gene Symbol	BCL2A1
Species	Human, Mouse
Specificity/Sensitivity	At least two isoforms of Bfl-1 are known to exist; this antibody will only detect the larger isoform.
Immunogen	Antibody was raised against a 14 amino acid synthetic peptide from near the carboxy terminus of human Bfl-1. The immunogen is located within the last 50 amino acids of Bfl-1. Amino Acid Sequence: ENGFVKKFEPKSG
Product Application Details	
Applications	Western Blot, Immunohistochemistry-Paraffin, ELISA, Immunocytochemistry/Immunofluorescence, Immunohistochemistry
Recommended Dilutions	Western Blot 1 ug/ml, ELISA 1:100-1:2000, Immunohistochemistry 10 ug/ml, Immunocytochemistry/ Immunofluorescence 20 ug/ml, Immunohistochemistry-Paraffin 10 ug/ml

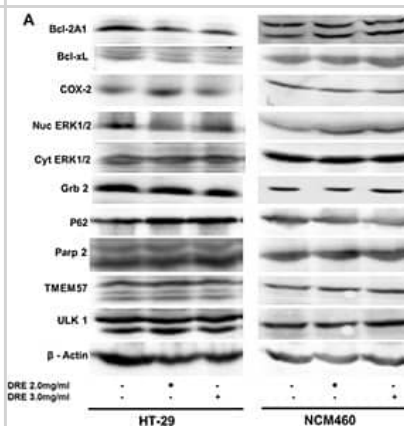


Images

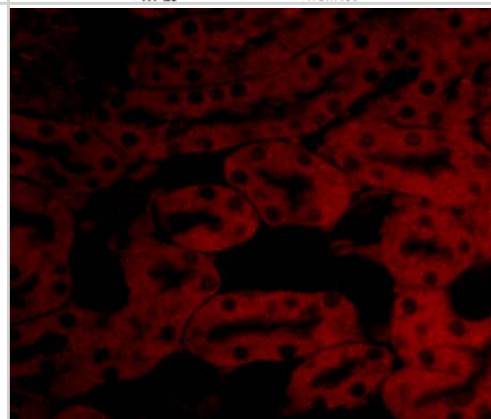
Western Blot: Bcl-2 related protein A1 Antibody [NBP1-76715] - Analysis of Bfl-1 in (A) human kidney and (B) human lung tissue lysate with Bfl-1 antibody at 1 ug/mL.



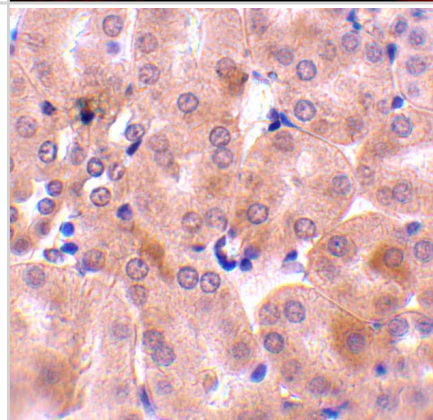
Western Blot: Bcl-2 related protein A1 Antibody [NBP1-76715] - Activation of signaling pathways by dandelion root extract. Western blots of proteins involved in programmed cell death and cell survival and inflammation. The protein levels, including ULK1 (NBP2-24738), Bcl-2 related protein A1 (NBP1-76715), and PARP2 (NB100-185) corresponded to the mRNA levels obtained during the gene expression analysis. Image collected and cropped by CiteAb from the following publication ([//pubmed.ncbi.nlm.nih.gov/27564258/](https://pubmed.ncbi.nlm.nih.gov/27564258/)) licensed under a CC-BY license.



Immunocytochemistry/ Immunofluorescence: Bcl-2 related protein A1 Antibody - BSA Free [NBP1-76715] - Immunofluorescence of Bcl-2 related protein A1 in Mouse Kidney tissue with Bcl-2 related protein A1 antibody at 20 u/mL.



Immunohistochemistry: Bcl-2 related protein A1 Antibody - BSA Free [NBP1-76715] - Immunohistochemistry of Bcl-2 related protein A1 in mouse kidney tissue with Bcl-2 related protein A1 antibody at 10 ug/mL.



Publications

Ovadjie P, Ammar S, Guerrero Ja et al. Dandelion root extract affects colorectal cancer proliferation and survival through the activation of multiple death signalling pathways. *Oncotarget* 2016-08-22 [PMID: 27564258] (WB)



Novus Biologicals USA

10730 E. Briarwood Avenue
Centennial, CO 80112
USA
Phone: 303.730.1950
Toll Free: 1.888.506.6887
Fax: 303.730.1966
nb-customerservice@bio-techne.com

Bio-Techne Canada

21 Canmotor Ave
Toronto, ON M8Z 4E6
Canada
Phone: 905.827.6400
Toll Free: 855.668.8722
Fax: 905.827.6402
canada.inquires@bio-techne.com

Bio-Techne Ltd

19 Barton Lane
Abingdon Science Park
Abingdon, OX14 3NB, United Kingdom
Phone: (44) (0) 1235 529449
Free Phone: 0800 37 34 15
Fax: (44) (0) 1235 533420
info.EMEA@bio-techne.com

General Contact Information

www.novusbio.com
Technical Support: nb-technical@bio-techne.com
Orders: nb-customerservice@bio-techne.com
General: novus@novusbio.com

Products Related to NBP1-76715

NBP1-76715PEP	Bcl-2 related protein A1 Antibody Blocking Peptide
HAF008	Goat anti-Rabbit IgG Secondary Antibody [HRP]
NB7160	Goat anti-Rabbit IgG (H+L) Secondary Antibody [HRP]
NBP2-24891	Rabbit IgG Isotype Control

Limitations

This product is for research use only and is not approved for use in humans or in clinical diagnosis. Primary Antibodies are guaranteed for 1 year from date of receipt.

For more information on our 100% guarantee, please visit www.novusbio.com/guarantee

Earn gift cards/discounts by submitting a review: www.novusbio.com/reviews/submit/NBP1-76715

Earn gift cards/discounts by submitting a publication using this product:
www.novusbio.com/publications

