

# Product Datasheet

## Guinea Pig anti-Rabbit IgG (H+L) Secondary Antibody [Rhodamine] (Pre-adsorbed) NBP1-73652

Unit Size: 1 mg

Store lyophilized antibody at 4C in the dark. Aliquot reconstituted liquid and store at -20C. Avoid freeze-thaw cycles.

[www.novusbio.com](http://www.novusbio.com)



[technical@novusbio.com](mailto:technical@novusbio.com)

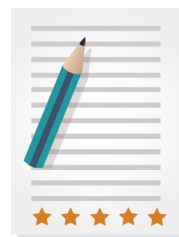
Protocols, Publications, Related Products, Reviews, Research Tools and Images at:  
[www.novusbio.com/NBP1-73652](http://www.novusbio.com/NBP1-73652)

Updated 10/23/2024 v.20.1

Earn rewards for product  
reviews and publications.

Submit a publication at [www.novusbio.com/publications](http://www.novusbio.com/publications)

Submit a review at [www.novusbio.com/reviews/destination/NBP1-73652](http://www.novusbio.com/reviews/destination/NBP1-73652)



**NBP1-73652**

Guinea Pig anti-Rabbit IgG (H+L) Secondary Antibody [Rhodamine] (Pre-adsorbed)

| Product Information                |   |
|------------------------------------|---|
| <b>Unit Size</b>                   | 1 mg  |
| <b>Concentration</b>               | LYOPH mg/ml   |
| <b>Storage</b>                     | Store lyophilized antibody at 4C in the dark. Aliquot reconstituted liquid and store at -20C. Avoid freeze-thaw cycles.                             |
| <b>Clonality</b>                   | Polyclonal  |
| <b>Preservative</b>                | 0.01% Sodium Azide  |
| <b>Reconstitution Instructions</b> | Reconstitute with 1.0 ml deionized water (or equivalent).   |
| <b>Isotype</b>                     | IgG   |
| <b>Conjugate</b>                   | Rhodamine   |
| <b>Purity</b>                      | Multi-step  |
| <b>Buffer</b>                      | Lyophilized from 0.02 M Potassium Phosphate, 0.15 M Sodium Chloride, pH 7.2, 10 mg/mL Bovine Serum Albumin (BSA) - Immunoglobulin and Protease free |

| Product Description            |   |
|--------------------------------|---|
| <b>Description</b>             | <p>Store vial at 4C prior to restoration. For extended storage aliquot contents and freeze at -20C or below. Avoid cycles of freezing and thawing. Centrifuge product if not completely clear after standing at room temperature. This product is stable for several weeks at 4C as an undiluted liquid. Dilute only prior to immediate use.</p> <p>This product was prepared from monospecific antiserum by immunoaffinity chromatography using Rabbit IgG coupled to agarose beads followed by solid phase adsorption(s) to remove any unwanted reactivities. Assay by immunoelectrophoresis resulted in a single precipitin arc against anti-Guinea Pig Serum, Rabbit IgG and Rabbit Serum</p> |
| <b>Host</b>                    | Guinea Pig  |
| <b>Species</b>                 | Rabbit  |
| <b>Specificity/Sensitivity</b> | <p>This antibody was pre-adsorbed against Human, Goat, and Mouse Serum Proteins.</p> <p>No reaction was observed against Goat, Human and Mouse Serum Proteins.</p>  |
| <b>Immunogen</b>               | Rabbit IgG whole molecule   |

| Product Application Details  |  |
|------------------------------|--|
| <b>Applications</b>          | Western Blot, Dot Blot, Fluorophore-linked immunosorbent assay, Flow Cytometry, Immunocytochemistry/ Immunofluorescence  |
| <b>Recommended Dilutions</b> | Western Blot 1:1000 - 1:10000, Flow Cytometry 1:500 - 1:2500, Immunocytochemistry/ Immunofluorescence 1:1000 - 1:5000, Dot Blot, Fluorophore-linked immunosorbent assay 1:10000 - 1:50000  |
| <b>Application Notes</b>     | This secondary antibody is designed for immunofluorescence microscopy, fluorescence based plate assays (FLISA) and fluorescent western blotting. This product is also suitable for multiplex analysis, including multicolor imaging, utilizing various commercial platforms. |

## Images

Western Blot: Guinea Pig anti-Rabbit IgG (H+L) Secondary Antibody [Rhodamine] (Pre-adsorbed) [NBP1-73652] - Lane 1: Rabbit IgG whole molecule. Lane 2: Rabbit IgG F(ab) Fragment. Lane 3: Rabbit IgG F(c) Fragment. All samples were reduced. Load: 50 ng per lane. Block: incubated with blocking buffer for 30 min at RT. Primary Antibody: Anti-Rabbit IgG (H&L) (GUINEA PIG) Antibody (Min X Hu, Gt, Ms Serum Proteins) 1:500 for 60 min at RT. Secondary antibody: Anti-Guinea Pig IgG (GOAT) Peroxidase Conjugated Antibody 1:40,000 in incubated with blocking buffer for 30 min at RT. Predicted/Observed Size: 25 and 50 kDa for Rabbit IgG and Serum, 25 kDa for F(c) and F(ab). Rabbit F(c) migrates slightly higher.



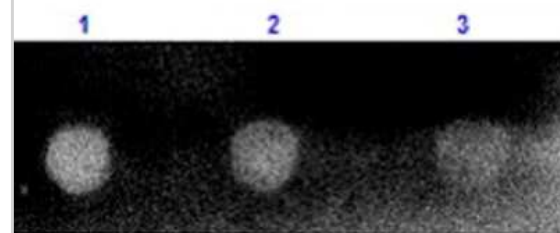
Dot Blot: Guinea Pig anti-Rabbit IgG (H+L) Secondary Antibody [Rhodamine] (Pre-adsorbed) [NBP1-73652] - Dot Blot results of Guinea Pig anti-Rabbit IgG (H+L) Secondary Antibody [Rhodamine] (Pre-adsorbed).

Dots are Rabbit IgG at (1) 100ng, (2) 33.3ng, (3) 11.1ng, (4) 3.70ng, (5) 1.23ng.

Blocking: Fluorescent blocking buffer for 60 min at RT.

Primary Antibody: none.

Secondary Antibody: Guinea Pig anti-Rabbit IgG (H+L) Secondary Antibody [Rhodamine] (Pre-adsorbed) at 1ug/ml for 1hr at RT. Imaged with Rhodamine filter of western blot imaging system.





### **Novus Biologicals USA**

10730 E. Briarwood Avenue  
Centennial, CO 80112  
USA  
Phone: 303.730.1950  
Toll Free: 1.888.506.6887  
Fax: 303.730.1966  
nb-customerservice@bio-techne.com

### **Bio-Techne Canada**

21 Canmotor Ave  
Toronto, ON M8Z 4E6  
Canada  
Phone: 905.827.6400  
Toll Free: 855.668.8722  
Fax: 905.827.6402  
canada.inquires@bio-techne.com

### **Bio-Techne Ltd**

19 Barton Lane  
Abingdon Science Park  
Abingdon, OX14 3NB, United Kingdom  
Phone: (44) (0) 1235 529449  
Free Phone: 0800 37 34 15  
Fax: (44) (0) 1235 533420  
info.EMEA@bio-techne.com

### **General Contact Information**

www.novusbio.com  
Technical Support: nb-technical@bio-techne.com  
Orders: nb-customerservice@bio-techne.com  
General: novus@novusbio.com

### **Limitations**

This product is for research use only and is not approved for use in humans or in clinical diagnosis. Secondary Antibodies are guaranteed for 1 year from date of receipt.

For more information on our 100% guarantee, please visit [www.novusbio.com/guarantee](http://www.novusbio.com/guarantee)

Earn gift cards/discounts by submitting a review: [www.novusbio.com/reviews/submit/NBP1-73652](http://www.novusbio.com/reviews/submit/NBP1-73652)

Earn gift cards/discounts by submitting a publication using this product:  
[www.novusbio.com/publications](http://www.novusbio.com/publications)

