

Product Datasheet

Recombinant Human EB2 His Protein NBP1-72455-100ug

Unit Size: 100 ug

Store at 4C short term. Aliquot and store at -20C long term. Avoid freeze-thaw cycles.

www.novusbio.com



technical@novusbio.com

Protocols, Publications, Related Products, Reviews, Research Tools and Images at:
www.novusbio.com/NBP1-72455

Updated 12/17/2025 v.20.1

Earn rewards for product
reviews and publications.

Submit a publication at www.novusbio.com/publications

Submit a review at www.novusbio.com/reviews/destination/NBP1-72455



NBP1-72455-100ug

Recombinant Human EB2 His Protein

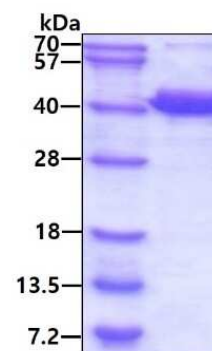
Product Information	
Unit Size	100 ug
Concentration	1 mg/ml
Storage	Store at 4C short term. Aliquot and store at -20C long term. Avoid freeze-thaw cycles.
Preservative	No Preservative
Purity	>90%, by SDS-PAGE
Buffer	20 mM Tris-HCl buffer (pH8.0), 20% glycerol, 0.1 M NaCl, 1 mM DTT
Target Molecular Weight	39.1 kDa

Product Description	
Description	<p>A recombinant protein with a N-Terminal His-tag and corresponding to the amino acids 1-327 of Human EB2</p> <p>Source: <i>E.coli</i></p> <p>Amino Acid Sequence: MGSSHHHHHH SGLVPRGSH MPGPTQTLSP NGENNDIIQ DNNGTIIPFR KHTVRGERSY SWGMAVNVYS TSITQETMSR HDIIAWVNDI VSLNYTKVEQ LCSGAAYCQF MDMLFPGCIS LKKVKFQAKL EHEYIHNFKL LQASFKRMNV DKVIPVEKLV KGRFQDNLDF IQWFKKFYDA NYDGKEYDPV EARQQQDAIP PPDPGEQIFN LPKKSHHANS PTAGAAKSSP AAKPGSTPSR PSSAKRASSS GSASKSDKDL ETQVIQLNEQ VHSLKLALEG VEKERDFYFG KLREIELLCQ EHGQENDDL V QRLMDILYAS EEHEGHTEEP EAEEQAHEQQ PPQQEY</p>
Gene ID	10982
Gene Symbol	MAPRE2
Species	Human

Product Application Details	
Applications	SDS-Page
Recommended Dilutions	SDS-Page

Images

SDS-Page: Recombinant Human EB2 His Protein [NBP1-72455] - 3ug by SDS-PAGE under reducing condition and visualized by coomassie blue stain





Novus Biologicals USA

10730 E. Briarwood Avenue
Centennial, CO 80112
USA
Phone: 303.730.1950
Toll Free: 1.888.506.6887
Fax: 303.730.1966
nb-customerservice@bio-techne.com

Bio-Techne Canada

21 Canmotor Ave
Toronto, ON M8Z 4E6
Canada
Phone: 905.827.6400
Toll Free: 855.668.8722
Fax: 905.827.6402
canada.inquires@bio-techne.com

Bio-Techne Ltd

19 Barton Lane
Abingdon Science Park
Abingdon, OX14 3NB, United Kingdom
Phone: (44) (0) 1235 529449
Free Phone: 0800 37 34 15
Fax: (44) (0) 1235 533420
info.EMEA@bio-techne.com

General Contact Information

www.novusbio.com
Technical Support: nb-technical@bio-techne.com
Orders: nb-customerservice@bio-techne.com
General: novus@novusbio.com

Products Related to NBP1-72455-100ug

NBP1-84927PEP	EB2 Recombinant Protein Antigen
AF2335	Aminopeptidase N/CD13 Antibody [Unconjugated]
NBP2-00714	EB2 Antibody (OTI1F3)
NBP2-25160	Rhodopsin Antibody (B630) - BSA Free

Limitations

This product is for research use only and is not approved for use in humans or in clinical diagnosis. Peptides and proteins are guaranteed for 1 year from date of receipt.

For more information on our 100% guarantee, please visit www.novusbio.com/guarantee

Earn gift cards/discounts by submitting a review: www.novusbio.com/reviews/submit/NBP1-72455

Earn gift cards/discounts by submitting a publication using this product:
www.novusbio.com/publications

