

Product Datasheet

Clathrin Heavy Chain 1/CHC17 Antibody NBP1-52529

Unit Size: 0.05 mg

Store at -20C. Avoid freeze-thaw cycles.

www.novusbio.com



technical@novusbio.com

Publications: 1

Protocols, Publications, Related Products, Reviews, Research Tools and Images at:
www.novusbio.com/NBP1-52529

Updated 9/9/2025 v.20.1

Earn rewards for product
reviews and publications.

Submit a publication at www.novusbio.com/publications

Submit a review at www.novusbio.com/reviews/destination/NBP1-52529



NBP1-52529**Clathrin Heavy Chain 1/CHC17 Antibody**

Product Information	
Unit Size	0.05 mg
Concentration	0.5 mg/ml
Storage	Store at -20C. Avoid freeze-thaw cycles.
Clonality	Polyclonal
Preservative	0.02% Sodium Azide
Isotype	IgG
Purity	Immunogen affinity purified
Buffer	TBS (pH 7.3) and 0.5% BSA

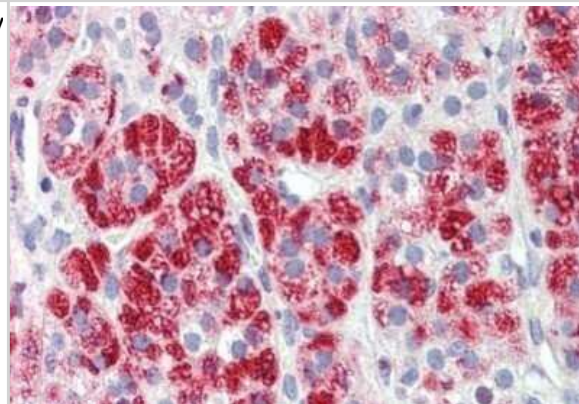
Product Description	
Description	Novus Biologicals Goat Clathrin Heavy Chain 1/CHC17 Antibody (NBP1-52529) is a polyclonal antibody validated for use in IHC. Anti-Clathrin Heavy Chain 1/CHC17 Antibody: Cited in 1 publication. All Novus Biologicals antibodies are covered by our 100% guarantee.
Host	Goat
Gene ID	1213
Gene Symbol	CLTC
Species	Human, Mouse, Rat, Porcine, Bat, Bovine, Canine, Chicken, Equine, Primate, Monkey, Rabbit, Sheep, Xenopus, Zebrafish
Reactivity Notes	Predicted cross-reactivity based on sequence identity: Gorilla (100%), Gibbon (100%), Marmoset (100%).
Marker	Clathrin-coated Vesicle Marker
Immunogen	Synthetic peptide C-ESLRKEEEQATETQ from an internal region (near C-terminus) of human Clathrin Heavy Chain 1/CHC17 (NP_004850.1).

Product Application Details	
Applications	Immunohistochemistry-Paraffin, Immunohistochemistry
Recommended Dilutions	Immunohistochemistry, Immunohistochemistry-Paraffin 3.75 ug/ml
Application Notes	.

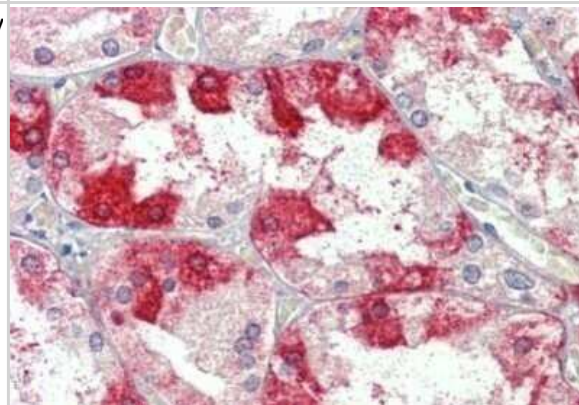


Images

Immunohistochemistry-Paraffin: Clathrin Heavy Chain 1/CHC17 Antibody [NBP1-52529] - Analysis of anti-CLTC antibody with human adrenal at concentration 3.75 ug/ml.



Immunohistochemistry-Paraffin: Clathrin Heavy Chain 1/CHC17 Antibody [NBP1-52529] - Analysis of anti-CLTC antibody with human kidney at concentration 3.75 ug/ml.



Publications

J Defourny, C Audouard, A Davy, M Thiry Efnb2 haploinsufficiency induces early gap junction plaque disassembly and endocytosis in the cochlea Brain research bulletin, 2021-06-15;174(0):153-160. 2021-06-15 [PMID: 34139316]



Novus Biologicals USA

10730 E. Briarwood Avenue
Centennial, CO 80112
USA
Phone: 303.730.1950
Toll Free: 1.888.506.6887
Fax: 303.730.1966
nb-customerservice@bio-techne.com

Bio-Techne Canada

21 Canmotor Ave
Toronto, ON M8Z 4E6
Canada
Phone: 905.827.6400
Toll Free: 855.668.8722
Fax: 905.827.6402
canada.inquires@bio-techne.com

Bio-Techne Ltd

19 Barton Lane
Abingdon Science Park
Abingdon, OX14 3NB, United Kingdom
Phone: (44) (0) 1235 529449
Free Phone: 0800 37 34 15
Fax: (44) (0) 1235 533420
info.EMEA@bio-techne.com

General Contact Information

www.novusbio.com
Technical Support: nb-technical@bio-techne.com
Orders: nb-customerservice@bio-techne.com
General: novus@novusbio.com

Products Related to NBP1-52529

HAF017	Rabbit anti-Goat IgG Secondary Antibody [HRP (Horseradish Peroxidase)]
HAF109	Donkey anti-Goat IgG Secondary Antibody [HRP (Horseradish Peroxidase)]
NB410-28088-1mg	Goat IgG Isotype Control
H00001213-Q01-10ug	Recombinant Human Clathrin Heavy Chain 1/CHC17 GST (N-Term) Protein

Limitations

This product is for research use only and is not approved for use in humans or in clinical diagnosis. Primary Antibodies are guaranteed for 1 year from date of receipt.

For more information on our 100% guarantee, please visit www.novusbio.com/guarantee

Earn gift cards/discounts by submitting a review: www.novusbio.com/reviews/submit/NBP1-52529

Earn gift cards/discounts by submitting a publication using this product:

www.novusbio.com/publications



