

Product Datasheet

Lysine (K)-specific Demethylase 3A/KDM3A/JMJD1A Antibody (1E12) - BSA Free NBP1-51678

Unit Size: 0.1 ml

Store at 4C short term. Aliquot and store at -20C long term. Avoid freeze-thaw cycles.

www.novusbio.com



technical@novusbio.com

Publications: 1

Protocols, Publications, Related Products, Reviews, Research Tools and Images at:
www.novusbio.com/NBP1-51678

Updated 9/9/2025 v.20.1

Earn rewards for product
reviews and publications.

Submit a publication at www.novusbio.com/publications

Submit a review at www.novusbio.com/reviews/destination/NBP1-51678



NBP1-51678

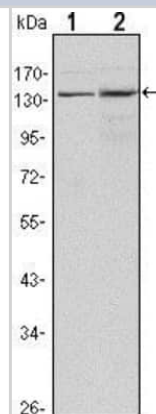
Lysine (K)-specific Demethylase 3A/KDM3A/JMJD1A Antibody (1E12) - BSA Free

Product Information	
Unit Size	0.1 ml
Concentration	1.0 mg/ml
Storage	Store at 4C short term. Aliquot and store at -20C long term. Avoid freeze-thaw cycles.
Clonality	Monoclonal
Clone	1E12
Preservative	0.03% Sodium Azide
Isotype	IgG1
Purity	Ammonium sulfate precipitation
Buffer	PBS
Target Molecular Weight	147 kDa
Product Description	
Description	Novus Biologicals Mouse Lysine (K)-specific Demethylase 3A/KDM3A/JMJD1A Antibody (1E12) - BSA Free (NBP1-51678) is a monoclonal antibody validated for use in IHC, WB, ELISA, ICC/IF and Simple Western. Anti-Lysine (K)-specific Demethylase 3A/KDM3A/JMJD1A Antibody: Cited in 1 publication. All Novus Biologicals antibodies are covered by our 100% guarantee.
Host	Mouse
Gene ID	55818
Gene Symbol	KDM3A
Species	Human
Immunogen	Purified recombinant fragment of human JMJD1A expressed in E. coli. [UniProt# Q9Y4C1]
Product Application Details	
Applications	Western Blot, Simple Western, Immunohistochemistry-Paraffin, ELISA, Immunocytochemistry/ Immunofluorescence, Immunohistochemistry
Recommended Dilutions	Western Blot 1:500-1:2000, Simple Western 1:500, ELISA 1:10000, Immunohistochemistry 1:200-1:1000, Immunocytochemistry/ Immunofluorescence 1:10-1:500, Immunohistochemistry-Paraffin 1:200-1:1000
Application Notes	<p>This JMJD1A (1E12) antibody is useful in Western Blot, ELISA and Immunohistochemistry on paraffin-embedded sections.</p> <p>In Simple Western only 10 - 15 uL of the recommended dilution is used per data point.</p> <p>See Simple Western Antibody Database for Simple Western validation: Tested in HepG2 lysate 0.5 mg/mL, separated by Size, antibody dilution of 1:500, apparent MW was 151 kDa. Separated by Size-Wes, Sally Sue/Peggy Sue.</p> <p>The observed molecular weight of the protein may vary from the listed predicted molecular weight due to post translational modifications, post translation cleavages, relative charges, and other experimental factors.</p>

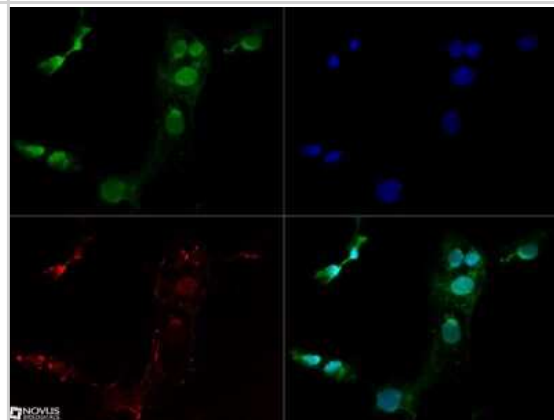


Images

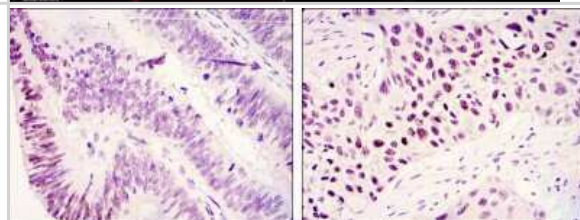
Western Blot: Lysine (K)-specific Demethylase 3A/KDM3A/JMJD1A Antibody (1E12) [NBP1-51678] - Western blot analysis using JMJD1A mouse mAb against Hela (1) and HepG2 (2) cell lysates.



Immunocytochemistry/Immunofluorescence: Lysine (K)-specific Demethylase 3A/KDM3A/JMJD1A Antibody (1E12) [NBP1-51678] - JMJD1A antibody was tested at 1:10 in Ntera2 cells with Dylight 488 (green). Nuclei and alpha-tubulin were counterstained with DAPI (blue) and Dylight 550 (red). Image objective 40x.



Immunohistochemistry-Paraffin: Lysine (K)-specific Demethylase 3A/KDM3A/JMJD1A Antibody (1E12) [NBP1-51678] - Immunohistochemical analysis of paraffin-embedded colonic cancer tissues (left) and lung cancer tissues (right) using JMJD1A mouse mAb with DAB staining.



Simple Western: Lysine (K)-specific Demethylase 3A/KDM3A/JMJD1A Antibody (1E12) [NBP1-51678] - Simple Western lane view shows a specific band for JMJD1A in 0.5 mg/ml of HepG2 lysate. This experiment was performed under reducing conditions using the 12-230 kDa separation system.



Publications

Kuroki S, Matoba S, Akiyoshi M et al. Epigenetic Regulation of Mouse Sex Determination by the Histone Demethylase Jmjd1a. *Science*. 2013-09-06 [PMID: 24009392]



Novus Biologicals USA

10730 E. Briarwood Avenue
Centennial, CO 80112
USA
Phone: 303.730.1950
Toll Free: 1.888.506.6887
Fax: 303.730.1966
nb-customerservice@bio-techne.com

Bio-Techne Canada

21 Canmotor Ave
Toronto, ON M8Z 4E6
Canada
Phone: 905.827.6400
Toll Free: 855.668.8722
Fax: 905.827.6402
canada.inquires@bio-techne.com

Bio-Techne Ltd

19 Barton Lane
Abingdon Science Park
Abingdon, OX14 3NB, United Kingdom
Phone: (44) (0) 1235 529449
Free Phone: 0800 37 34 15
Fax: (44) (0) 1235 533420
info.EMEA@bio-techne.com

General Contact Information

www.novusbio.com
Technical Support: nb-technical@bio-techne.com
Orders: nb-customerservice@bio-techne.com
General: novus@novusbio.com

Products Related to NBP1-51678

NBP1-42569	HepG2 Whole Cell Lysate
NBP2-33376H	Blue Marker Antibody (6F4-F6) [HRP]
HAF007	Goat anti-Mouse IgG Secondary Antibody [HRP]
NB7539	Goat anti-Mouse IgG (H+L) Secondary Antibody [HRP]
NBP1-97005-0.5mg	Mouse IgG1 Isotype Control (MG1)

Limitations

This product is for research use only and is not approved for use in humans or in clinical diagnosis. Primary Antibodies are guaranteed for 1 year from date of receipt.

For more information on our 100% guarantee, please visit www.novusbio.com/guarantee

Earn gift cards/discounts by submitting a review: www.novusbio.com/reviews/submit/NBP1-51678

Earn gift cards/discounts by submitting a publication using this product:
www.novusbio.com/publications

