

Product Datasheet

GOLM1 Antibody NBP1-50627

Unit Size: 0.1 ml

Store at 4C short term. Aliquot and store at -20C long term. Avoid freeze-thaw cycles.

www.novusbio.com



technical@novusbio.com

Reviews: 3 Publications: 3

Protocols, Publications, Related Products, Reviews, Research Tools and Images at:
www.novusbio.com/NBP1-50627

Updated 9/9/2025 v.20.1

**Earn rewards for product
reviews and publications.**

Submit a publication at www.novusbio.com/publications

Submit a review at www.novusbio.com/reviews/destination/NBP1-50627



NBP1-50627**GOLM1 Antibody**

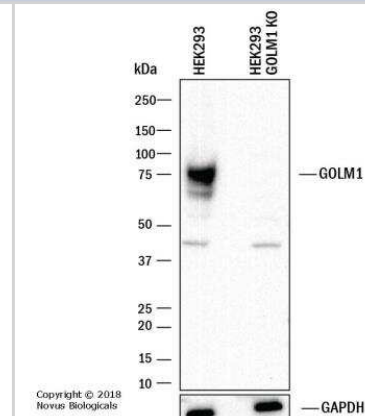
Product Information	
Unit Size	0.1 ml
Concentration	0.61 mg/ml
Storage	Store at 4C short term. Aliquot and store at -20C long term. Avoid freeze-thaw cycles.
Clonality	Polyclonal
Preservative	0.05% Sodium Azide
Isotype	IgG
Purity	Immunogen affinity purified
Buffer	PBS, 0.1% BSA, 50% Glycerol

Product Description	
Description	Novus Biologicals Knockout (KO) Validated Rabbit GOLM1 Antibody (NBP1-50627) is a polyclonal antibody validated for use in WB and ICC/IF. Anti-GOLM1 Antibody: Cited in 2 publications. All Novus Biologicals antibodies are covered by our 100% guarantee.
Host	Rabbit
Gene ID	51280
Gene Symbol	GOLM1
Species	Human, Mouse
Marker	Golgi Apparatus Marker
Immunogen	A genomic peptide made to an internal region of the human GOLM1 protein (within residues 250-400). [Swiss-Prot Q8NBJ4]
Notes	Manufactured by Genomic Antibody Technology™. GAT FAQs

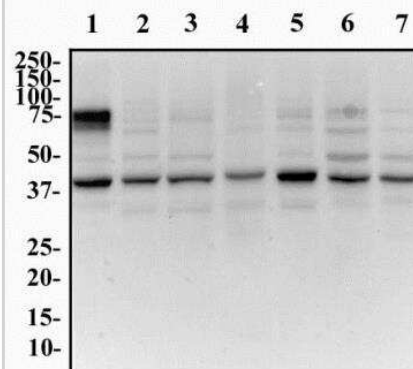
Product Application Details	
Applications	Western Blot, Immunocytochemistry/ Immunofluorescence, Knockout Validated
Recommended Dilutions	Western Blot 1:5000, Immunocytochemistry/ Immunofluorescence 1:500, Knockout Validated

Images

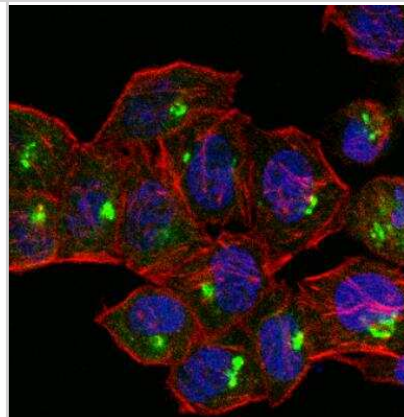
Western Blot: GOLM1 Antibody [NBP1-50627] - Western blot shows lysates of HEK293 human embryonic kidney parental cell line and GOLM1 knockout (KO) HEK293 human embryonic kidney cell line. PVDF membrane was probed with 1:5,000 of Rabbit Anti-Human GOLM1 polyclonal Antibody (Catalog # NBP1-50627) followed by HRP-conjugated Anti-Rabbit IgG Secondary Antibody (Catalog #HAF008). Specific band was detected for GOLM1 at approximately 75 kDa (as indicated) in the parental HEK293 cell line, but is not detectable in the knockout HEK293 cell line. This experiment was conducted under reducing conditions.



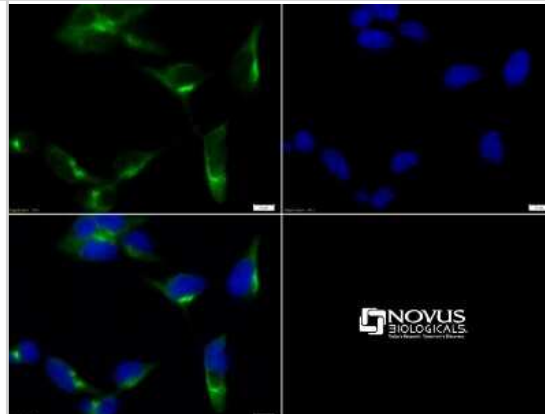
Western Blot: GOLM1 Antibody [NBP1-50627] - Western Blot Image of GOLM1. Whole cell protein from HeLa (lane 1), 3T3 (lane 2), MEF (lane 3), Raw264.7 (lane 4), L929 (lane 5), Neuro2A (lane 6) and PC12 (lane 7) were separated on a 12% gel by SDS-PAGE, transferred to PVDF membrane and blocked in 5% non-fat milk in TBST. The membrane was probed with 0.5 mg/ml anti-GOLM1 in 1% milk and detected with an anti-rabbit HRP secondary antibody using chemiluminescence.



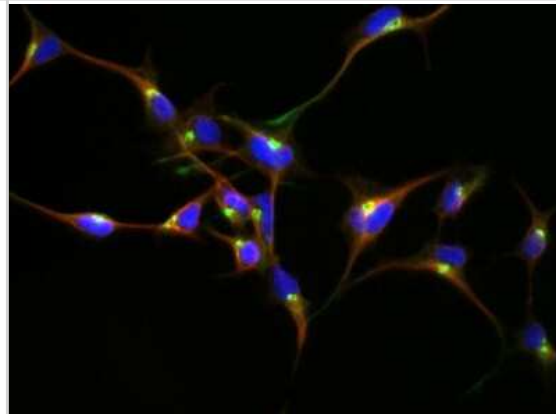
Immunocytochemistry/Immunofluorescence: GOLM1 Antibody [NBP1-50627] - Confocal immunofluorescent analysis of HeLa cells using GOLM1 antibody (NBP1-50627, 1:25). An Alexa Fluor 488-conjugated Goat to rabbit IgG was used as secondary antibody (green). Actin filaments were labeled with Alexa Fluor 568 phalloidin (red). DAPI was used to stain the cell nuclei (blue).



Immunocytochemistry/Immunofluorescence: GOLM1 Antibody [NBP1-50627] - ICC staining of GOLM1 in HEK293T cells with FITC (green). Nuclei (blue) were counterstained with Dapi.



Immunocytochemistry/Immunofluorescence: GOLM1 Antibody [NBP1-50627] - GOLM1 antibody was tested in HEK-293 cells with Dylight 488 (green). Nuclei and alpha-tubulin were counterstained with DAPI (blue) and Dylight 550 (red).



Publications

Muralidharan C, Huang F, Enriquez J et al. Suppression of the Integrated Stress Response in Islet β Cells Decreases Risk of Autoimmune Diabetes bioRxiv 2023-10-09 (WB)

Nagaraj M, HOring M, Ahonen MA et al. GOLM1 depletion modifies cellular sphingolipid metabolism and adversely affects cell growth Journal of lipid research 2022-08-07 [PMID: 35948172] (ICC/IF, WB, KD, Human)

Garcia V, Park E. J, et al. Unbiased proteomics identifies plasminogen activator inhibitor-1 as a negative regulator of endothelial nitric oxide synthase. Proc Natl Acad Sci U S A 2020-04-28 [PMID: 32300005] (ICC/IF, Human)



Procedures

Western Blot protocol for GOLM1 Antibody (NBP1-50627)

GOLM1 Antibody:

Western Blot Protocol

1. Perform SDS-PAGE on samples to be analyzed, loading 40 ug of total protein per lane.
2. Transfer proteins to membrane according to the instructions provided by the manufacturer of the membrane and transfer apparatus.
3. Stain according to standard Ponceau S procedure (or similar product) to assess transfer success, and mark molecular weight standards where appropriate.
4. Rinse the blot.
5. Block the membrane using standard blocking buffer for at least 1 hour.
6. Wash the membrane in wash buffer three times for 10 minutes each.
7. Dilute the primary antibody in blocking buffer and incubate 1 hour at room temperature.
8. Wash the membrane in wash buffer three times for 10 minutes each.
9. Apply diluted rabbit-IgG HRP-conjugated secondary antibody in blocking buffer (as per manufacturers instructions) and incubate 1 hour at room temperature.
10. Wash the blot in wash buffer three times for 10 minutes each (this step can be repeated as required to reduce background).
11. Apply the detection reagent of choice in accordance with the manufacturers instructions.

*Note: Tween-20 can be added to the blocking or antibody dilution buffer at a final concentration of 0.05-0.2%.

Immunocytochemistry/Immunofluorescence protocol for GOLM1 Antibody (NBP1-50627)

GOLM1 Antibody:

Immunocytochemistry Protocol

Culture cells to appropriate density in 35 mm culture dishes or 6-well plates.

1. Remove culture medium and add 10% formalin to the dish. Fix at room temperature for 30 minutes.
2. Remove the formalin and add ice cold methanol. Incubate for 5-10 minutes.
3. Remove methanol and add washing solution (i.e. PBS). Be sure to not let the specimen dry out. Wash three times for 10 minutes.
4. To block nonspecific antibody binding incubate in 10% normal goat serum from 1 hour to overnight at room temperature.
5. Add primary antibody at appropriate dilution and incubate at room temperature from 2 hours to overnight at room temperature.
6. Remove primary antibody and replace with washing solution. Wash three times for 10 minutes.
7. Add secondary antibody at appropriate dilution. Incubate for 1 hour at room temperature.
8. Remove antibody and replace with wash solution, then wash for 10 minutes. Add Hoechst 33258 to wash solution at 1:25,000 and incubate for 10 minutes. Wash a third time for 10 minutes.
9. Cells can be viewed directly after washing. The plates can also be stored in PBS containing Azide covered in Parafilm (TM). Cells can also be cover-slipped using Fluoromount, with appropriate sealing.

*The above information is only intended as a guide. The researcher should determine what protocol best meets their needs. Please follow safe laboratory procedures.



Novus Biologicals USA

10730 E. Briarwood Avenue
Centennial, CO 80112
USA
Phone: 303.730.1950
Toll Free: 1.888.506.6887
Fax: 303.730.1966
nb-customerservice@bio-techne.com

Bio-Techne Canada

21 Canmotor Ave
Toronto, ON M8Z 4E6
Canada
Phone: 905.827.6400
Toll Free: 855.668.8722
Fax: 905.827.6402
canada.inquires@bio-techne.com

Bio-Techne Ltd

19 Barton Lane
Abingdon Science Park
Abingdon, OX14 3NB, United Kingdom
Phone: (44) (0) 1235 529449
Free Phone: 0800 37 34 15
Fax: (44) (0) 1235 533420
info.EMEA@bio-techne.com

General Contact Information

www.novusbio.com
Technical Support: nb-technical@bio-techne.com
Orders: nb-customerservice@bio-techne.com
General: novus@novusbio.com

Products Related to NBP1-50627

NB800-PC1	HeLa Whole Cell Lysate
NBP2-33376H	Blue Marker Antibody (6F4-F6) [HRP]
HAF008	Goat anti-Rabbit IgG Secondary Antibody [HRP]
NB7160	Goat anti-Rabbit IgG (H+L) Secondary Antibody [HRP]
NBP2-24891	Rabbit IgG Isotype Control

Limitations

This product is for research use only and is not approved for use in humans or in clinical diagnosis. Primary Antibodies are guaranteed for 1 year from date of receipt.

For more information on our 100% guarantee, please visit www.novusbio.com/guarantee

Earn gift cards/discounts by submitting a review: www.novusbio.com/reviews/submit/NBP1-50627

Earn gift cards/discounts by submitting a publication using this product:
www.novusbio.com/publications

