

# Product Datasheet

## RBBP6 Antibody - BSA Free NBP1-49535

Unit Size: 0.1 ml

Store at 4C short term. Aliquot and store at -20C long term. Avoid freeze-thaw cycles.

[www.novusbio.com](http://www.novusbio.com)



[technical@novusbio.com](mailto:technical@novusbio.com)

### Publications: 5

Protocols, Publications, Related Products, Reviews, Research Tools and Images at:  
[www.novusbio.com/NBP1-49535](http://www.novusbio.com/NBP1-49535)

Updated 9/9/2025 v.20.1

Earn rewards for product  
reviews and publications.

Submit a publication at [www.novusbio.com/publications](http://www.novusbio.com/publications)

Submit a review at [www.novusbio.com/reviews/destination/NBP1-49535](http://www.novusbio.com/reviews/destination/NBP1-49535)



**NBP1-49535**

RBBP6 Antibody - BSA Free

Product Information	
Unit Size	0.1 ml
Concentration	1 mg/ml
Storage	Store at 4C short term. Aliquot and store at -20C long term. Avoid freeze-thaw cycles.
Clonality	Polyclonal
Preservative	0.05% Sodium Azide
Isotype	IgG
Purity	Immunogen affinity purified
Buffer	PBS and 30% Glycerol

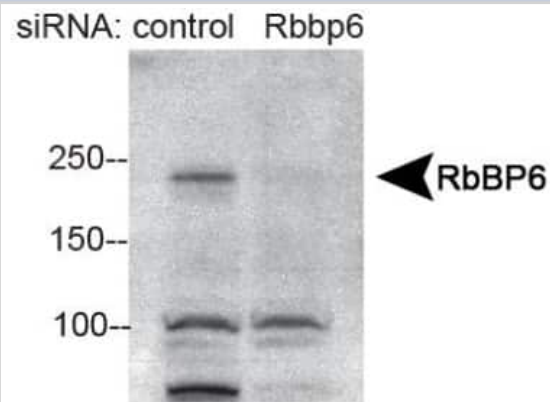
Product Description	
Description	Novus Biologicals Rabbit RBBP6 Antibody - BSA Free (NBP1-49535) is a polyclonal antibody validated for use in IHC, WB, ICC/IF and IP. Anti-RBBP6 Antibody: Cited in 4 publications. All Novus Biologicals antibodies are covered by our 100% guarantee.
Host	Rabbit
Gene ID	5930
Gene Symbol	RBBP6
Species	Human, Mouse
Specificity/Sensitivity	This antibody may detect isoform 1 (201.6 kDa), isoform 2 (197.3 kDa) and isoform 4 (106.0 kDa) of human RBBP6.
Immunogen	A synthetic peptide made to an internal portion of the human RBBP6 protein (between residues 1600-1650) [UniProt Q7Z6E9]

Product Application Details	
Applications	Western Blot, Immunohistochemistry-Paraffin, Immunocytochemistry/Immunofluorescence, Immunohistochemistry, Immunoprecipitation, Knockdown Validated
Recommended Dilutions	Western Blot 1:1000, Immunohistochemistry, Immunocytochemistry/Immunofluorescence reported in scientific literature (PMID 27667193), Immunoprecipitation 1:10-1:500, Immunohistochemistry-Paraffin 1:400, Knockdown Validated reported in scientific literature (PMID 34348893)

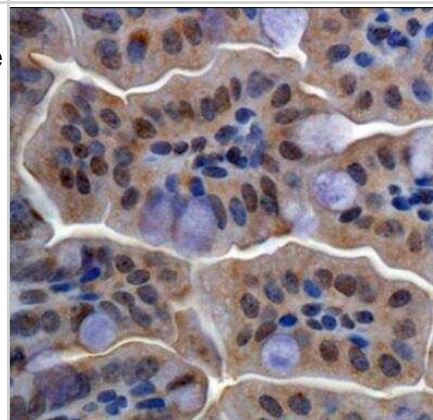


**Images**

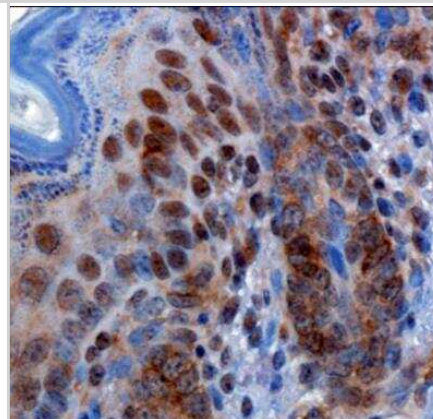
Western Blot: RBBP6 Antibody [NBP1-49535] - Analysis of RbBP6 in HeLa nuclear extracts.



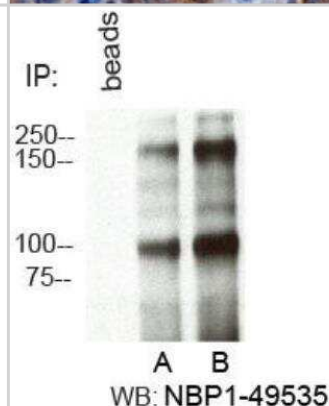
Immunohistochemistry-Paraffin: RBBP6 Antibody [NBP1-49535] - IHC analysis of formalin-fixed paraffin-embedded tissue section from intestine of normal mouse with 1:400 dilution of RBBP6 antibody. The intestinal epithelial cells depicted a nuclear and cytoplasmic immunostaining pattern with this antibody.



Immunohistochemistry-Paraffin: RBBP6 Antibody [NBP1-49535] - IHC analysis of formalin-fixed paraffin-embedded tissue section from skin of normal mouse with 1:400 dilution of RBBP6 antibody. The keratinocytes and other epidermal cells developed nuclear and cytoplasmic immunostaining with this antibody.



Immunoprecipitation: RBBP6 Antibody [NBP1-49535] - Immunoprecipitation of RbBP6 from HeLa cells using A. NBP1-49542 and B. NBP1-49535.



**Publications**

Ye Z, Xu S, Shi Y Et al. GRB2 enforces homology-directed repair initiation by MRE11 Science advances 2021-08-01 [PMID: 34348893] (IP, KD, Human)

Makgoo L Investigation of the role of arsenic trioxide on the expression of RBBP6 splice variants and their specific micrnas (MIRS) during cell cycle progression and apoptosis Thesis (ICC/IF, Human)

Xiao C, Wu G, Zhou Z et al. RBBP6, a RING finger-domain E3 ubiquitin ligase, induces epithelial-mesenchymal transition and promotes metastasis of colorectal cancer Cell Death Dis 2019-11-04 [PMID: 31685801] (IF/IHC, Human)

Monchusi B, Ntwasa M. Methyl pyruvate protects a normal lung fibroblast cell line from irinotecan-induced cell death: Potential use as adjunctive to chemotherapy PLoS ONE 2017-08-10 [PMID: 28797070] (WB, Human)

Kishikawa T, Otsuka M, Yoshikawa T et al. Satellite RNAs promote pancreatic oncogenic processes via the dysfunction of YBX1 Nat Commun 2016-09-26 [PMID: 27667193] (ICC/IF, Mouse)



## Procedures

### Serum protocol for RBBP6 Antibody (NBP1-49535)

RBBP6 Antibody:

Western Blot Protocol

1. Perform SDS-PAGE (4-12% MOPS) on samples to be analyzed, loading 40 ug of total protein per lane.
2. Transfer proteins to Nitrocellulose according to the instructions provided by the manufacturer of the transfer apparatus.
3. Rinse membrane with dH<sub>2</sub>O and then stain the blot using Ponceau S for 1-2 minutes to access the transfer of proteins onto the nitrocellulose membrane. Rinse the blot in water to remove excess stain and mark the lane locations and locations of molecular weight markers using a pencil.
4. Rinse the blot in TBS for approximately 5 minutes.
5. Block the membrane using 5% NFD<sub>M</sub> + 1% BSA in TBS + Tween, 1 hour at RT.
6. Rinse the membrane in dH<sub>2</sub>O and then wash the membrane in wash buffer [TBS + 0.1% Tween] 3 times for 10 minutes each.
7. Dilute the rabbit anti-RBBP6 primary antibody (NBP1-49535) in blocking buffer and incubate 1 hour at room temperature.
8. Rinse the membrane in dH<sub>2</sub>O and then wash the membrane in wash buffer [TBS + 0.1% Tween] 3 times for 10 minutes each.
9. Apply the diluted rabbit-IgG HRP-conjugated secondary antibody in blocking buffer (as per manufacturers instructions) and incubate 1 hour at room temperature.
10. Wash the blot in wash buffer [TBS + 0.1% Tween] 3 times for 10 minutes each (this step can be repeated as required to reduce background).
11. Apply the detection reagent of choice in accordance with the manufacturers instructions (Pierce ECL).

Note: Tween-20 can be added to the blocking or antibody dilution buffer at a final concentration of 0.05-0.2%, provided it does not interfere with antibody-antigen binding.





### **Novus Biologicals USA**

10730 E. Briarwood Avenue  
Centennial, CO 80112  
USA  
Phone: 303.730.1950  
Toll Free: 1.888.506.6887  
Fax: 303.730.1966  
nb-customerservice@bio-techne.com

### **Bio-Techne Canada**

21 Canmotor Ave  
Toronto, ON M8Z 4E6  
Canada  
Phone: 905.827.6400  
Toll Free: 855.668.8722  
Fax: 905.827.6402  
canada.inquires@bio-techne.com

### **Bio-Techne Ltd**

19 Barton Lane  
Abingdon Science Park  
Abingdon, OX14 3NB, United Kingdom  
Phone: (44) (0) 1235 529449  
Free Phone: 0800 37 34 15  
Fax: (44) (0) 1235 533420  
info.EMEA@bio-techne.com

### **General Contact Information**

www.novusbio.com  
Technical Support: nb-technical@bio-techne.com  
Orders: nb-customerservice@bio-techne.com  
General: novus@novusbio.com

### **Products Related to NBP1-49535**

---

NB800-PC1	HeLa Whole Cell Lysate
NBP2-33376H	Blue Marker Antibody (6F4-F6) [HRP]
HAF008	Goat anti-Rabbit IgG Secondary Antibody [HRP]
NB7160	Goat anti-Rabbit IgG (H+L) Secondary Antibody [HRP]
NBP2-24891	Rabbit IgG Isotype Control

---

### **Limitations**

This product is for research use only and is not approved for use in humans or in clinical diagnosis. Primary Antibodies are guaranteed for 1 year from date of receipt.

For more information on our 100% guarantee, please visit [www.novusbio.com/guarantee](http://www.novusbio.com/guarantee)

Earn gift cards/discounts by submitting a review: [www.novusbio.com/reviews/submit/NBP1-49535](http://www.novusbio.com/reviews/submit/NBP1-49535)

Earn gift cards/discounts by submitting a publication using this product:  
[www.novusbio.com/publications](http://www.novusbio.com/publications)

