

Product Datasheet

SSB Antibody (OTI2C8) NBP1-48002

Unit Size: 0.1 ml

Store at -20C. Avoid freeze-thaw cycles.

www.novusbio.com



technical@novusbio.com

Protocols, Publications, Related Products, Reviews, Research Tools and Images at:
www.novusbio.com/NBP1-48002

Updated 9/9/2025 v.20.1

Earn rewards for product
reviews and publications.

Submit a publication at www.novusbio.com/publications

Submit a review at www.novusbio.com/reviews/destination/NBP1-48002



NBP1-48002

SSB Antibody (OTI2C8)

| Product Information | |
|-------------------------|--|
| Unit Size | 0.1 ml |
| Concentration | 0.8 mg/ml |
| Storage | Store at -20C. Avoid freeze-thaw cycles. |
| Clonality | Monoclonal |
| Clone | OTI2C8 |
| Preservative | 0.02% Sodium Azide |
| Isotype | IgG1 |
| Purity | Immunogen affinity purified |
| Buffer | PBS (pH 7.3), 1.0% BSA and 50% Glycerol |
| Target Molecular Weight | 46.8 kDa |

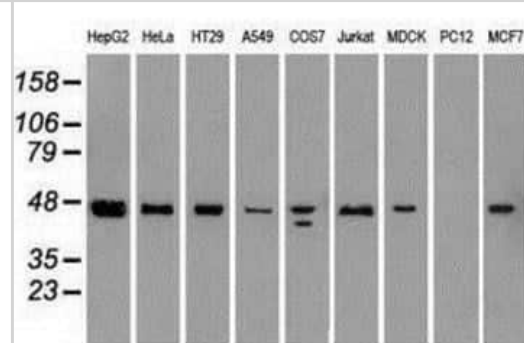
| Product Description | |
|-------------------------|--|
| Description | Novus Biologicals Mouse SSB Antibody (OTI2C8) (NBP1-48002) is a monoclonal antibody validated for use in IHC, WB, ICC/IF and IP. All Novus Biologicals antibodies are covered by our 100% guarantee. |
| Host | Mouse |
| Gene ID | 6741 |
| Gene Symbol | SSB |
| Species | Human, Canine, Primate, Monkey |
| Specificity/Sensitivity | This antibody is specific for Homo sapiens Sjogren syndrome antigen B (autoantigen La) (SSB). |
| Immunogen | Full-length protein expressed in 293T cell transfected with human SSB expression vector |

| Product Application Details | |
|-----------------------------|--|
| Applications | Western Blot, Immunohistochemistry-Paraffin, Immunocytochemistry/Immunofluorescence, Immunohistochemistry, Immunoprecipitation |
| Recommended Dilutions | Western Blot 1:1000-2000, Immunohistochemistry 1:150, Immunocytochemistry/Immunofluorescence 1:100, Immunoprecipitation 2ug/500ul, Immunohistochemistry-Paraffin 1:150 |
| Application Notes | IP was tested using 2ug of antibody per 500ul at 0.5mg/ml overexpression lysate. Optimal dilutions for other samples will need to be determined by the end user. |

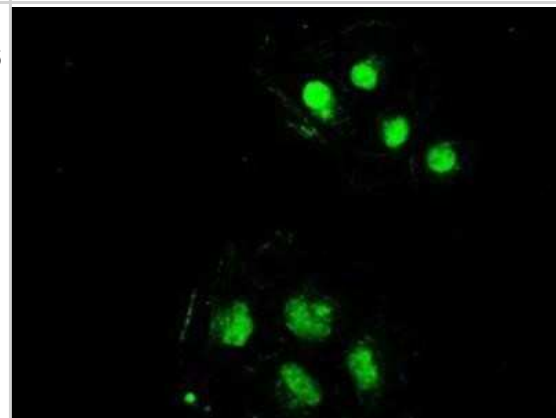


Images

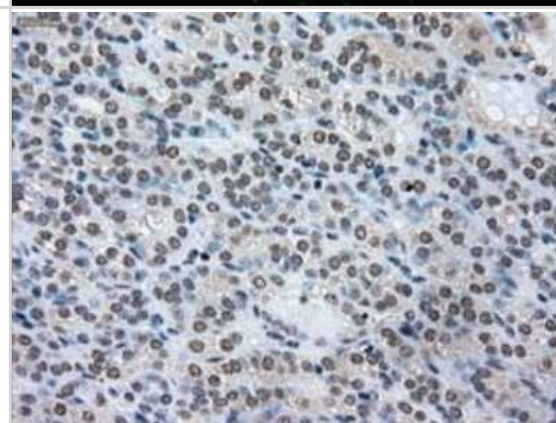
Western Blot: SSB Antibody (OTI2C8) [NBP1-48002] - Analysis of extracts (35ug) from 9 different cell lines by using anti-SSB monoclonal antibody.



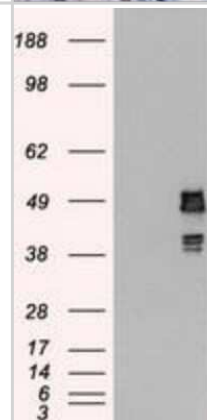
Immunocytochemistry/Immunofluorescence: SSB Antibody (OTI2C8) [NBP1-48002] - Staining of COS7 cells transiently transfected by pCMV6-ENTRY SSB.



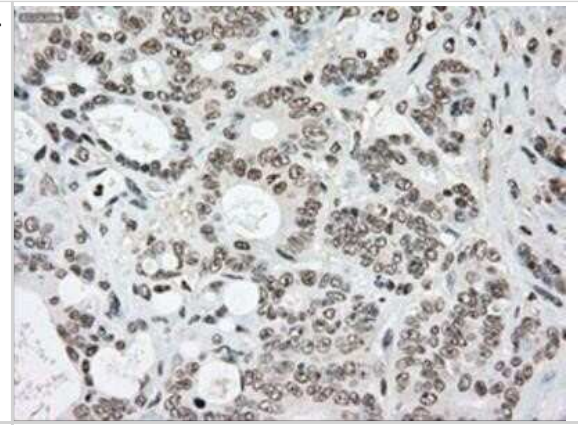
Immunohistochemistry-Paraffin: SSB Antibody (OTI2C8) [NBP1-48002] - Staining of paraffin-embedded Human prostate tissue using anti-SSB mouse monoclonal antibody.



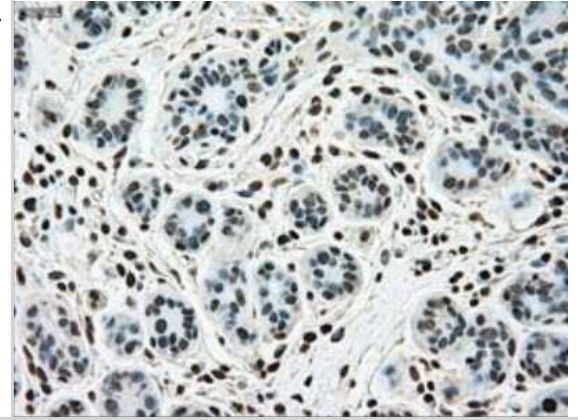
Western Blot: SSB Antibody (OTI2C8) [NBP1-48002] - HEK293T cells were transfected with the pCMV6-ENTRY control (Left lane) or pCMV6-ENTRY SSB (Right lane) cDNA for 48 hrs and lysed. Equivalent amounts of cell lysates (5 ug per lane) were separated by SDS-PAGE and immunoblotted with anti-SSB.



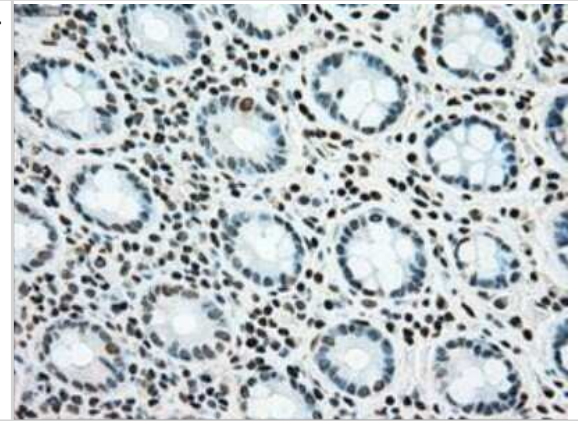
Immunohistochemistry-Paraffin: SSB Antibody (OTI2C8) [NBP1-48002] - Staining of paraffin-embedded Adenocarcinoma of Human colon tissue using anti-SSB mouse monoclonal antibody.



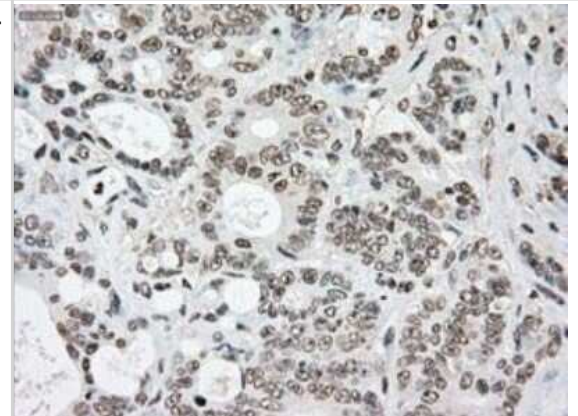
Immunohistochemistry-Paraffin: SSB Antibody (OTI2C8) [NBP1-48002] - Staining of paraffin-embedded Carcinoma of Human lung tissue using anti-SSB mouse monoclonal antibody.



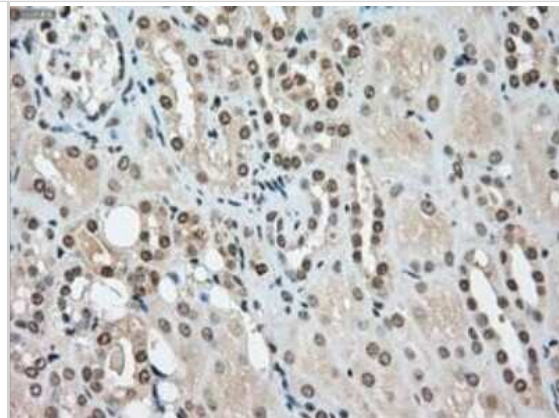
Immunohistochemistry-Paraffin: SSB Antibody (OTI2C8) [NBP1-48002] - Staining of paraffin-embedded Carcinoma of Human thyroid tissue using anti-SSB mouse monoclonal antibody.



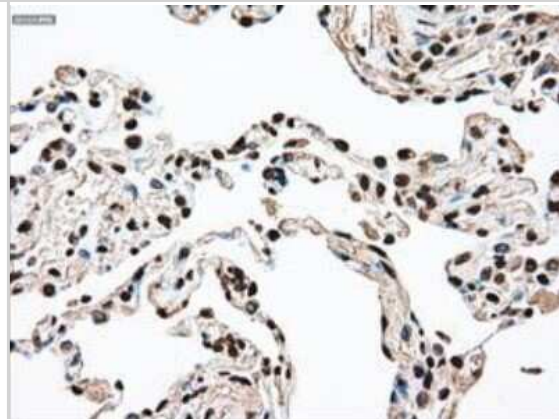
Immunohistochemistry-Paraffin: SSB Antibody (OTI2C8) [NBP1-48002] - Staining of paraffin-embedded Human breast tissue using anti-SSB mouse monoclonal antibody.



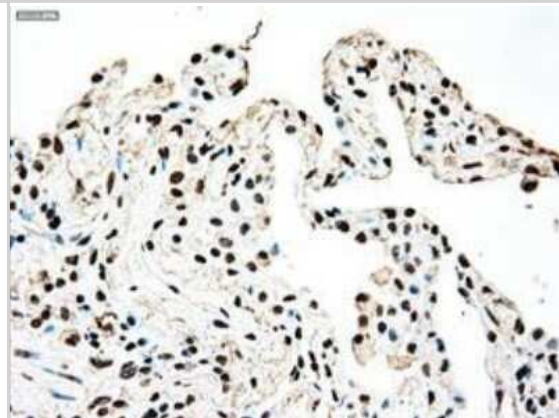
Immunohistochemistry-Paraffin: SSB Antibody (OTI2C8) [NBP1-48002] - Staining of paraffin-embedded Human colon tissue using anti-SSB mouse monoclonal antibody.



Immunohistochemistry-Paraffin: SSB Antibody (OTI2C8) [NBP1-48002] - Staining of paraffin-embedded Human endometrium tissue using anti-SSB mouse monoclonal antibody.



Immunohistochemistry-Paraffin: SSB Antibody (OTI2C8) [NBP1-48002] - Staining of paraffin-embedded Human Kidney tissue using anti-SSB mouse monoclonal antibody.



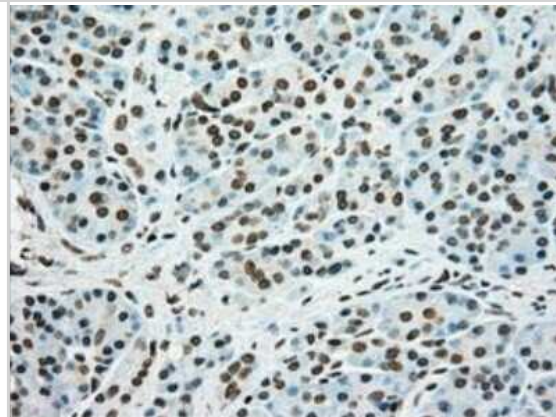
Immunohistochemistry-Paraffin: SSB Antibody (OTI2C8) [NBP1-48002] - Staining of paraffin-embedded Human lung tissue using anti-SSB mouse monoclonal antibody.



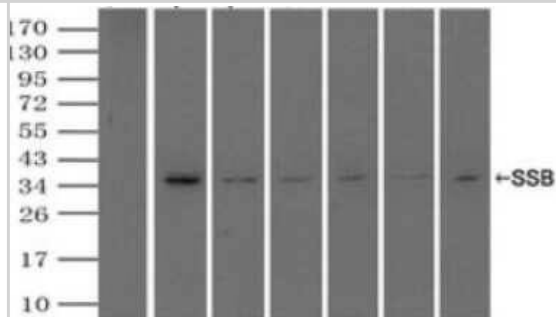
Immunohistochemistry-Paraffin: SSB Antibody (OTI2C8) [NBP1-48002] - Staining of paraffin-embedded Human Ovary tissue using anti-SSB mouse monoclonal antibody.



Immunohistochemistry-Paraffin: SSB Antibody (OTI2C8) [NBP1-48002] - Staining of paraffin-embedded Human pancreas tissue using anti-SSB mouse monoclonal antibody.



Immunoprecipitation: SSB Antibody (OTI2C8) [NBP1-48002] - (Negative control: IP without adding anti-SSB antibody.). For each experiment, 500ul of DDK tagged SSB overexpression lysates (at 1:5 dilution with HEK293T lysate), 2ug of anti-SSB antibody and 20ul (0.1mg) of goat anti-mouse conjugated magnetic beads were mixed and incubated overnight. After extensive wash to remove any non-specific binding, the immuno-precipitated products were analyzed with rabbit anti-DDK polyclonal antibody.



SSB Antibody (OTI2C8)[NBP1-48002] Simple Western analysis of endogenous protein TRPM4 from Jurkat lysates (0.2 mg/mL) using TRPM4 Mouse Monoclonal Antibody . The virtual lane view (left) shows the target (as indicated) at 1:50 dilution of primary antibody. The corresponding electropherogram view (right) plots chemiluminescence by molecular weight along the capillary at a 1:50 dilution of primary antibody. This experiment was performed under reducing conditions on the Jess Simple Western instrument from ProteinSimple, a Bio-Techne brand, using the 12-230 kDa Separation Module.





Novus Biologicals USA

10730 E. Briarwood Avenue
Centennial, CO 80112
USA
Phone: 303.730.1950
Toll Free: 1.888.506.6887
Fax: 303.730.1966
nb-customerservice@bio-techne.com

Bio-Techne Canada

21 Canmotor Ave
Toronto, ON M8Z 4E6
Canada
Phone: 905.827.6400
Toll Free: 855.668.8722
Fax: 905.827.6402
canada.inquires@bio-techne.com

Bio-Techne Ltd

19 Barton Lane
Abingdon Science Park
Abingdon, OX14 3NB, United Kingdom
Phone: (44) (0) 1235 529449
Free Phone: 0800 37 34 15
Fax: (44) (0) 1235 533420
info.EMEA@bio-techne.com

General Contact Information

www.novusbio.com
Technical Support: nb-technical@bio-techne.com
Orders: nb-customerservice@bio-techne.com
General: novus@novusbio.com

Products Related to NBP1-48002

| | |
|------------------|--|
| NBP2-33376H | Blue Marker Antibody (6F4-F6) [HRP] |
| HAF007 | Goat anti-Mouse IgG Secondary Antibody [HRP] |
| NB7539 | Goat anti-Mouse IgG (H+L) Secondary Antibody [HRP] |
| NBP1-97005-0.5mg | Mouse IgG1 Isotype Control (MG1) |

Limitations

This product is for research use only and is not approved for use in humans or in clinical diagnosis. Primary Antibodies are guaranteed for 1 year from date of receipt.

For more information on our 100% guarantee, please visit www.novusbio.com/guarantee

Earn gift cards/discounts by submitting a review: www.novusbio.com/reviews/submit/NBP1-48002

Earn gift cards/discounts by submitting a publication using this product:
www.novusbio.com/publications

