

Product Datasheet

Patched 1/PTCH Antibody (OTI5C7) NBP1-47945

Unit Size: 0.1 ml

Store at -20C. Avoid freeze-thaw cycles.

www.novusbio.com



technical@novusbio.com

Publications: 5

Protocols, Publications, Related Products, Reviews, Research Tools and Images at:
www.novusbio.com/NBP1-47945

Updated 9/9/2025 v.20.1

Earn rewards for product
reviews and publications.

Submit a publication at www.novusbio.com/publications

Submit a review at www.novusbio.com/reviews/destination/NBP1-47945



NBP1-47945

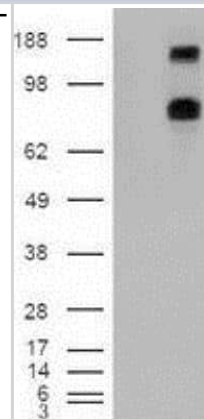
Patched 1/PTCH Antibody (OTI5C7)

Product Information	
Unit Size	0.1 ml
Concentration	0.2 mg/ml
Storage	Store at -20C. Avoid freeze-thaw cycles.
Clonality	Monoclonal
Clone	OTI5C7
Preservative	0.02% Sodium Azide
Isotype	IgG2b
Purity	Immunogen affinity purified
Buffer	PBS (pH 7.3), 1.0% BSA and 50% Glycerol
Target Molecular Weight	160.4 kDa
Product Description	
Description	Novus Biologicals Mouse Patched 1/PTCH Antibody (OTI5C7) (NBP1-47945) is a monoclonal antibody validated for use in IHC, WB and ICC/IF. Anti-Patched 1/PTCH Antibody: Cited in 4 publications. All Novus Biologicals antibodies are covered by our 100% guarantee.
Host	Mouse
Gene ID	5727
Gene Symbol	PTCH1
Species	Human, Mouse, Rat
Reactivity Notes	Please note that this antibody is reactive to Mouse and derived from the same host, Mouse. Mouse-On-Mouse blocking reagent may be needed for IHC and ICC experiments to reduce high background signal. You can find these reagents under catalog numbers PK-2200-NB and MP-2400-NB. Please contact Technical Support if you have any questions.
Specificity/Sensitivity	This antibody is specific for Homo sapiens patched homolog 1 (Drosophila) (PTCH1), transcript variant 1b.
Immunogen	Human recombinant protein fragment corresponding to amino acids 122-436 of human PTCH1 (NP_000255) produced in E.coli.
Product Application Details	
Applications	Western Blot, Immunohistochemistry-Paraffin, Immunocytochemistry/Immunofluorescence, Immunohistochemistry
Recommended Dilutions	Western Blot 1:500, Immunohistochemistry 1:50, Immunocytochemistry/Immunofluorescence 1:100, Immunohistochemistry-Paraffin 1:50

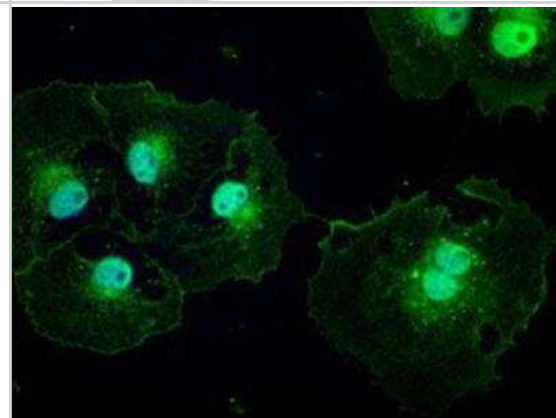


Images

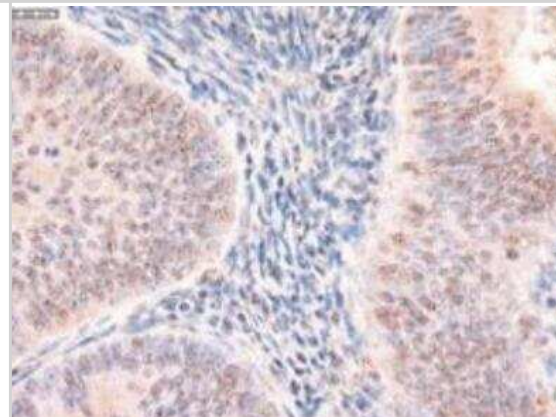
Western Blot: Patched 1/PTCH Antibody (5c7) [NBP1-47945] - HEK293T cells were transfected with the pCMV6-ENTRY control (Left lane) or pCMV6-ENTRY Patched 1 (Right lane) cDNA for 48 hrs and lysed. Equivalent amounts of cell lysates (5 ug per lane) were separated by SDS-PAGE and immunoblotted with anti-Patched 1.



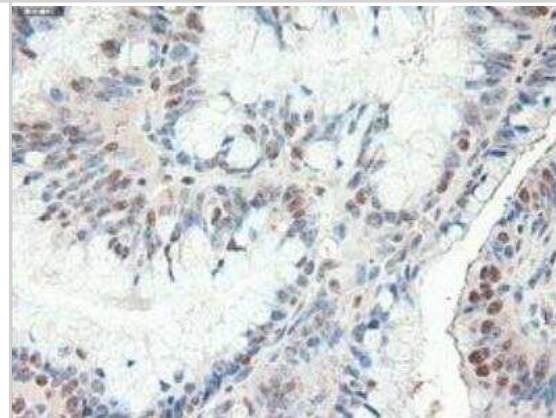
Immunocytochemistry/Immunofluorescence: Patched 1/PTCH Antibody (OTI5C7) [NBP1-47945] - Staining of COS7 cells transiently transfected by pCMV6-ENTRY Patched 1.



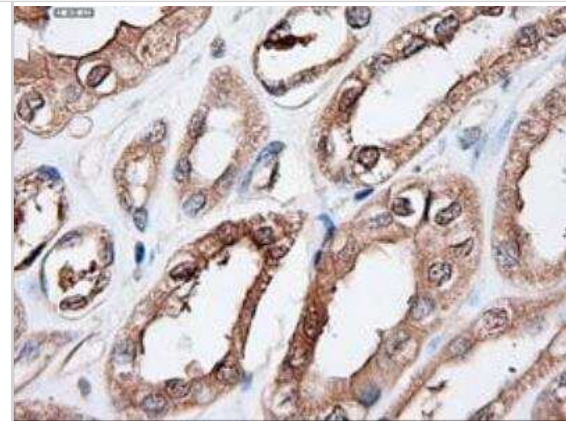
Immunohistochemistry-Paraffin: Patched 1/PTCH Antibody (5c7) [NBP1-47945] - Human endometrium tissue.



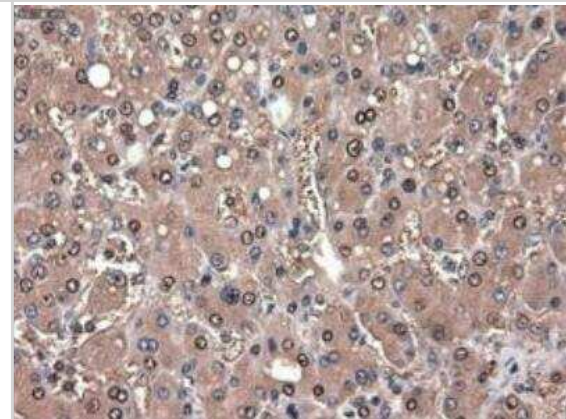
Immunohistochemistry-Paraffin: Patched 1/PTCH Antibody (5c7) [NBP1-47945] - Staining of paraffin-embedded Adenocarcinoma of Human colon tissue using anti-Patched 1 mouse monoclonal antibody.



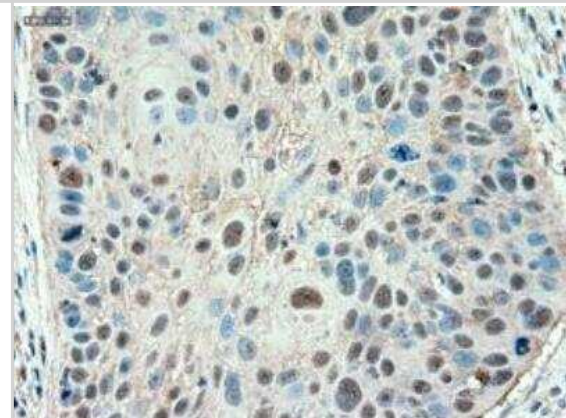
Immunohistochemistry-Paraffin: Patched 1/PTCH Antibody (5c7) [NBP1-47945] - Staining of paraffin-embedded Adenocarcinoma of Human endometrium tissue using anti-Patched 1 mouse monoclonal antibody.



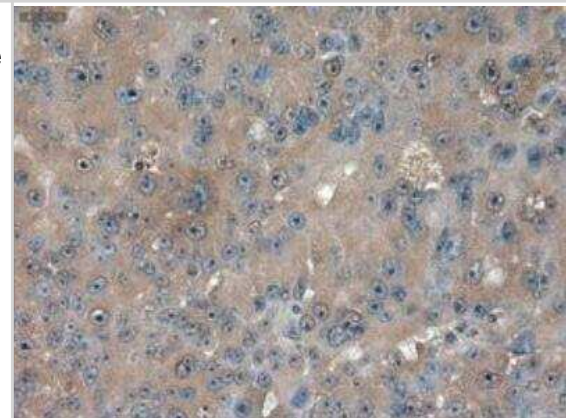
Immunohistochemistry-Paraffin: Patched 1/PTCH Antibody (5c7) [NBP1-47945] - Staining of paraffin-embedded Adenocarcinoma of Human ovary tissue using anti-Patched 1 mouse monoclonal antibody.



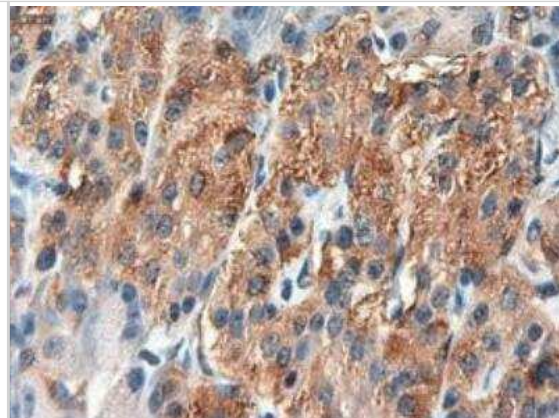
Immunohistochemistry-Paraffin: Patched 1/PTCH Antibody (5c7) [NBP1-47945] - Staining of paraffin-embedded Carcinoma of Human liver tissue using anti-Patched 1 mouse monoclonal antibody.



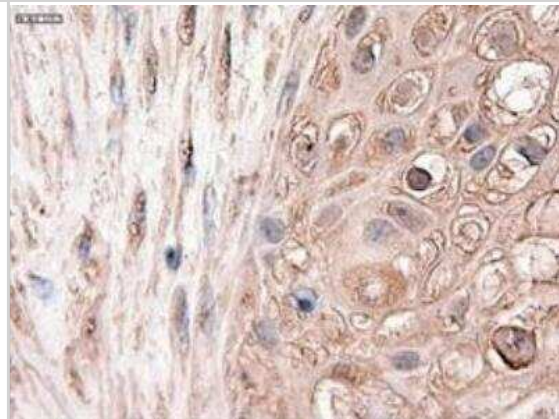
Immunohistochemistry-Paraffin: Patched 1/PTCH Antibody (5c7) [NBP1-47945] - Staining of paraffin-embedded Carcinoma of Human lung tissue using anti-Patched 1 mouse monoclonal antibody.



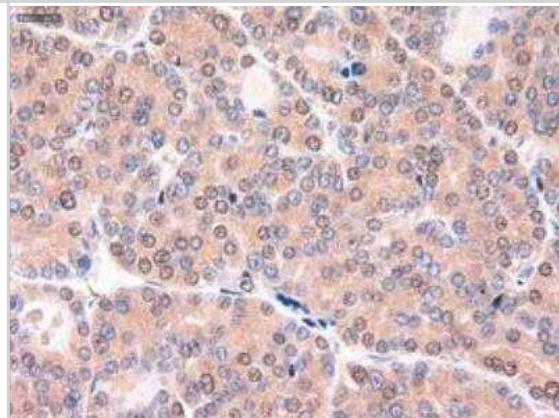
Immunohistochemistry-Paraffin: Patched 1/PTCH Antibody (5c7) [NBP1-47945] - Staining of paraffin-embedded Carcinoma of Human pancreas tissue using anti-Patched 1 mouse monoclonal antibody.



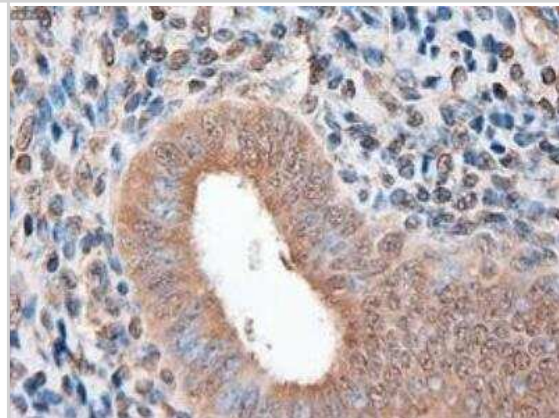
Immunohistochemistry-Paraffin: Patched 1/PTCH Antibody (5c7) [NBP1-47945] - Patched 1 Antibody (5c7) [NBP1-47945] - Staining of paraffin-embedded Carcinoma of Human thyroid tissue using anti-Patched 1 mouse monoclonal antibody.



Immunohistochemistry-Paraffin: Patched 1/PTCH Antibody (5c7) [NBP1-47945] - Staining of paraffin-embedded Human Kidney tissue using anti-Patched 1 mouse monoclonal antibody.



Immunohistochemistry-Paraffin: Patched 1/PTCH Antibody (5c7) [NBP1-47945] - Staining of paraffin-embedded Human pancreas tissue using anti-Patched 1 mouse monoclonal antibody.



Publications

Genovefa Polychronidou, Vassiliki Kotoula, Kyriaki Manousou, Ioannis Kostopoulos, Georgia Karayannopoulou, Eleni Vrettou, Mattheos Bobos, Georgia Raptou, Ioannis Efstratiou, Dimitrios Dionysopoulos, Kyriakos Chatzopoulos, Sotirios Lakis, Sofia Chrisafi, Dimitrios Tsolakidis, Alexios Papanikolaou, Nikolaos Dombros, George Fountzilas, Aamir Ahmad Mismatch repair deficiency and aberrations in the Notch and Hedgehog pathways are of prognostic value in patients with endometrial cancer PLoS ONE 2018-12-06 [PMID: 30521558]

Karin-Kujundzic V, Covarrubias-Pinto A, Skrtic A et al. New insights into the role of PTCH1 protein in serous ovarian carcinomas Research Square 2021-09-09 [PMID: 36205138] (WB, IF/IHC, ICC/IF, Human)

Hasanovic A, Ruggiero C, Jung S, Rapa I. Targeting the multidrug transporter Patched potentiates chemotherapy efficiency on adrenocortical carcinoma in vitro and in vivo. Int. J. Cancer. 2018-02-07 [PMID: 29411361] (IF/IHC, Human)

Dias RB. Estudo do perfil de expressao de componentes da via de sinalizacao sonic hedgehog em displasia epitelial oral [Study of the expression of components of sonic hedgehog signaling pathway in oral epithelial dysplasia profile. Thesis: <http://arca.icict.fiocruz.br/handle/icict/7483>]. Thesis (IHC-P, Human)

Bolanos AL, Milla CM, Lira JC et al. Role of Sonic Hedgehog in idiopathic pulmonary fibrosis. Am J Physiol Lung Cell Mol Physiol. 2012-12-01 [PMID: 23023967] (IF/IHC, Human)

Details:

Smoothened antibody (IMG 5904A) IHC-P ; Human Lung. (See Fig 3)





Novus Biologicals USA

10730 E. Briarwood Avenue
Centennial, CO 80112
USA
Phone: 303.730.1950
Toll Free: 1.888.506.6887
Fax: 303.730.1966
nb-customerservice@bio-techne.com

Bio-Techne Canada

21 Canmotor Ave
Toronto, ON M8Z 4E6
Canada
Phone: 905.827.6400
Toll Free: 855.668.8722
Fax: 905.827.6402
canada.inquires@bio-techne.com

Bio-Techne Ltd

19 Barton Lane
Abingdon Science Park
Abingdon, OX14 3NB, United Kingdom
Phone: (44) (0) 1235 529449
Free Phone: 0800 37 34 15
Fax: (44) (0) 1235 533420
info.EMEA@bio-techne.com

General Contact Information

www.novusbio.com
Technical Support: nb-technical@bio-techne.com
Orders: nb-customerservice@bio-techne.com
General: novus@novusbio.com

Products Related to NBP1-47945

NBP2-33376H	Blue Marker Antibody (6F4-F6) [HRP]
HAF007	Goat anti-Mouse IgG Secondary Antibody [HRP]
NB7539	Goat anti-Mouse IgG (H+L) Secondary Antibody [HRP]
NBP2-27231	Mouse IgG2b Isotype Control (MPC-11)

Limitations

This product is for research use only and is not approved for use in humans or in clinical diagnosis. Primary Antibodies are guaranteed for 1 year from date of receipt.

For more information on our 100% guarantee, please visit www.novusbio.com/guarantee

Earn gift cards/discounts by submitting a review: www.novusbio.com/reviews/submit/NBP1-47945

Earn gift cards/discounts by submitting a publication using this product:
www.novusbio.com/publications

