

# Product Datasheet

## Protein Kinase A regulatory subunit I alpha Antibody (OTI6C7) NBP1-47935

Unit Size: 0.1 ml

Store at -20C. Avoid freeze-thaw cycles.

[www.novusbio.com](http://www.novusbio.com)



[technical@novusbio.com](mailto:technical@novusbio.com)

**Reviews: 1 Publications: 1**

Protocols, Publications, Related Products, Reviews, Research Tools and Images at:  
[www.novusbio.com/NBP1-47935](http://www.novusbio.com/NBP1-47935)

Updated 9/9/2025 v.20.1

**Earn rewards for product  
reviews and publications.**

Submit a publication at [www.novusbio.com/publications](http://www.novusbio.com/publications)

Submit a review at [www.novusbio.com/reviews/destination/NBP1-47935](http://www.novusbio.com/reviews/destination/NBP1-47935)



**NBP1-47935**

Protein Kinase A regulatory subunit I alpha Antibody (OTI6C7)

<b>Product Information</b>	
<b>Unit Size</b>	0.1 ml
<b>Concentration</b>	1 mg/ml
<b>Storage</b>	Store at -20C. Avoid freeze-thaw cycles.
<b>Clonality</b>	Monoclonal
<b>Clone</b>	OTI6C7
<b>Preservative</b>	0.02% Sodium Azide
<b>Isotype</b>	IgG1
<b>Purity</b>	Immunogen affinity purified
<b>Buffer</b>	PBS (pH 7.3), 1.0% BSA and 50% Glycerol
<b>Target Molecular Weight</b>	43 kDa

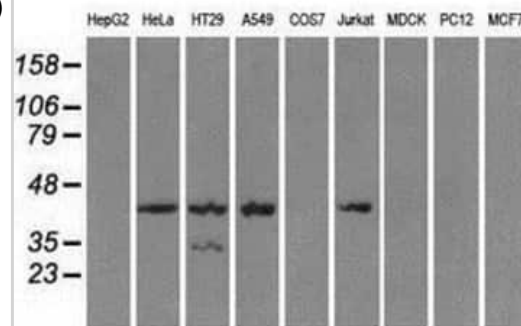
<b>Product Description</b>	
<b>Description</b>	Novus Biologicals Mouse Protein Kinase A regulatory subunit I alpha Antibody (OTI6C7) (NBP1-47935) is a monoclonal antibody validated for use in IHC, WB and ICC/IF. Anti-Protein Kinase A regulatory subunit I alpha Antibody: Cited in 1 publication. All Novus Biologicals antibodies are covered by our 100% guarantee.
<b>Host</b>	Mouse
<b>Gene ID</b>	5573
<b>Gene Symbol</b>	PRKAR1A
<b>Species</b>	Human, Mouse, Rat
<b>Reactivity Notes</b>	Please note that this antibody is reactive to Mouse and derived from the same host, Mouse. Mouse-On-Mouse blocking reagent may be needed for IHC and ICC experiments to reduce high background signal. You can find these reagents under catalog numbers PK-2200-NB and MP-2400-NB. Please contact Technical Support if you have any questions.
<b>Specificity/Sensitivity</b>	This antibody is specific for Homo sapiens protein kinase, cAMP-dependent, regulatory, type I, alpha (tissue specific extinguisher 1) (PRKAR1A), transcript variant 3.
<b>Immunogen</b>	Full-length protein expressed in 293T cell transfected with human PRKAR1A expression vector

<b>Product Application Details</b>	
<b>Applications</b>	Western Blot, Immunohistochemistry-Paraffin, Immunocytochemistry/Immunofluorescence, Immunohistochemistry
<b>Recommended Dilutions</b>	Western Blot 1:2000, Immunohistochemistry 1:50, Immunocytochemistry/Immunofluorescence 1:100, Immunohistochemistry-Paraffin 1:50

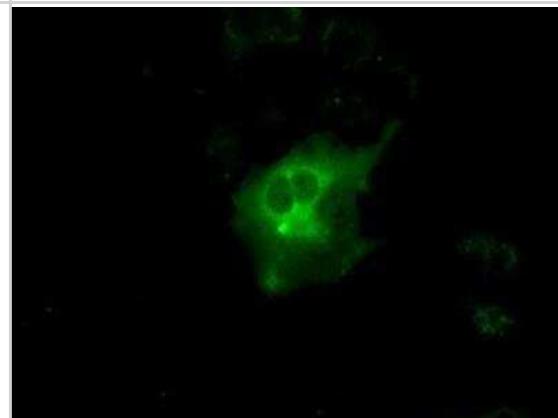


## Images

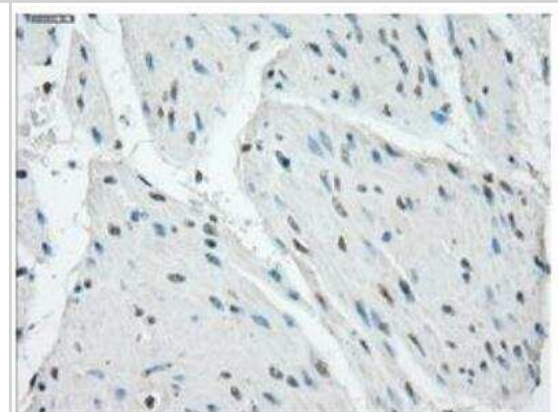
Western Blot: Protein Kinase A regulatory subunit I alpha Antibody (6C7) [NBP1-47935] Analysis of extracts (35ug) from 9 different cell lines by using anti-Protein Kinase A regulatory subunit I alpha monoclonal antibody.



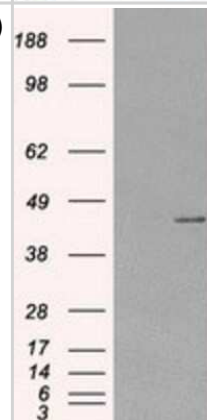
Immunocytochemistry/Immunofluorescence: Protein Kinase A regulatory subunit I alpha Antibody (OTI6C7) [NBP1-47935] - Staining of COS7 cells transiently transfected by pCMV6-ENTRY Protein Kinase A regulatory subunit I alpha.



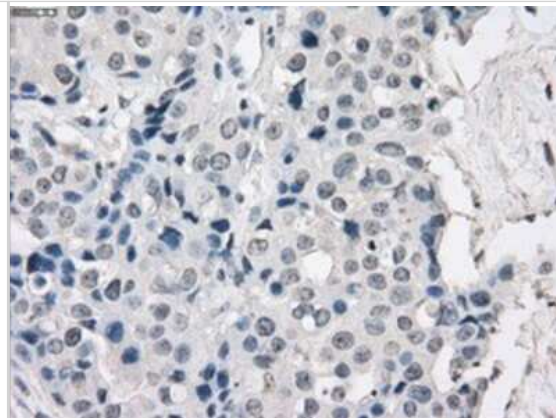
Immunohistochemistry-Paraffin: Protein Kinase A regulatory subunit I alpha Antibody (OTI6C7) [NBP1-47935] - Staining of paraffin-embedded carcinoma of bladder tissue (Heat-induced epitope retrieval by 10mM citric buffer, pH6.0, 100C for 10min, Dilution 1:50).



Western Blot: Protein Kinase A regulatory subunit I alpha Antibody (6C7) [NBP1-47935] - HEK293T cells were transfected with the pCMV6-ENTRY control (Left lane) or pCMV6-ENTRY Protein Kinase A regulatory subunit I alpha (Right lane) cDNA for 48 hrs and lysed. Equivalent amounts of cell lysates (5 ug per lane) were separated by SDS-PAGE and immunoblotted with anti-Protein Kinase A regulatory subunit I alpha.



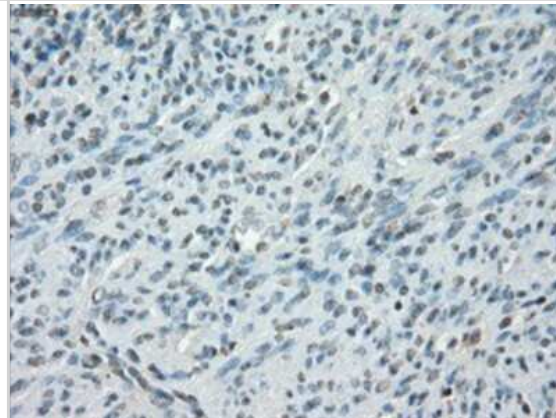
Immunohistochemistry-Paraffin: Protein Kinase A regulatory subunit I alpha Antibody (6C7) [NBP1-47935] - Staining of paraffin-embedded Adenocarcinoma of breast tissue using anti-Protein Kinase A regulatory subunit I alpha mouse monoclonal antibody.



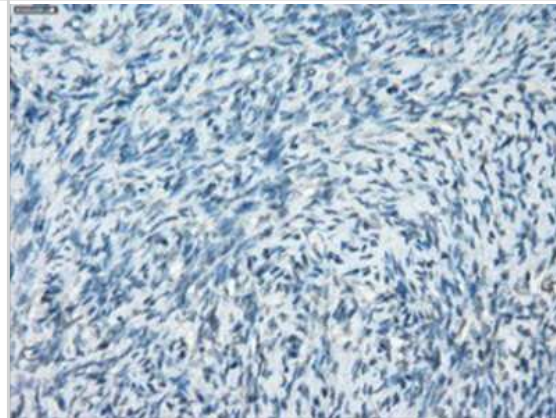
Immunohistochemistry-Paraffin: Protein Kinase A regulatory subunit I alpha Antibody (6C7) [NBP1-47935] - Staining of paraffin-embedded colon tissue using anti-Protein Kinase A regulatory subunit I alpha mouse monoclonal antibody.



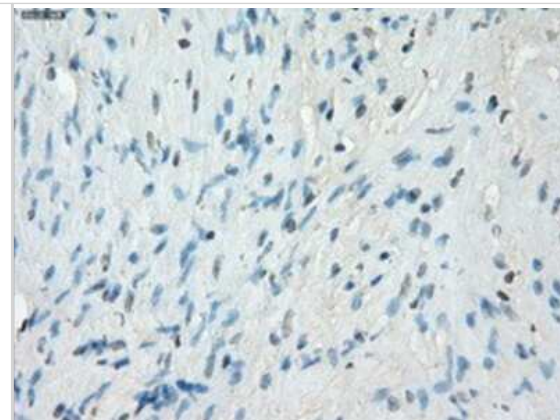
Immunohistochemistry-Paraffin: Protein Kinase A regulatory subunit I alpha Antibody (6C7) [NBP1-47935] - Staining of paraffin-embedded endometrium tissue using anti-Protein Kinase A regulatory subunit I alpha mouse monoclonal antibody.



Immunohistochemistry-Paraffin: Protein Kinase A regulatory subunit I alpha Antibody (6C7) [NBP1-47935] - Staining of paraffin-embedded Ovary tissue using anti-Protein Kinase A regulatory subunit I alpha mouse monoclonal antibody.



Immunohistochemistry-Paraffin: Protein Kinase A regulatory subunit I alpha Antibody (6C7) [NBP1-47935] - Staining of paraffin-embedded prostate tissue using anti-Protein Kinase A regulatory subunit I alpha mouse monoclonal antibody.



Protein Kinase A regulatory subunit I alpha Antibody (OT16C7)[NBP1-47935] Simple Western analysis of endogenous protein SERPINA1 from HepG2 lysates (0.2 mg/mL) using SERPINA1 Mouse Monoclonal Antibody . The virtual lane view (left) shows the target (as indicated) at 1:50 dilution of primary antibody. The corresponding electropherogram view (right) plots chemiluminescence by molecular weight along the capillary at a 1:50 dilution of primary antibody. This experiment was performed under reducing conditions on the Jess Simple Western instrument from ProteinSimple, a Bio-Techne brand, using the 12-230 kDa Separation Module.



## Publications

Bullen JW, Tchernyshyov I, Holewinski RJ et al. Protein kinase A-dependent phosphorylation stimulates the transcriptional activity of hypoxia-inducible factor 1 Sci Signal 2016-05-31 [PMID: 27245613] (WB, Human)



### **Novus Biologicals USA**

10730 E. Briarwood Avenue  
Centennial, CO 80112  
USA  
Phone: 303.730.1950  
Toll Free: 1.888.506.6887  
Fax: 303.730.1966  
nb-customerservice@bio-techne.com

### **Bio-Techne Canada**

21 Canmotor Ave  
Toronto, ON M8Z 4E6  
Canada  
Phone: 905.827.6400  
Toll Free: 855.668.8722  
Fax: 905.827.6402  
canada.inquires@bio-techne.com

### **Bio-Techne Ltd**

19 Barton Lane  
Abingdon Science Park  
Abingdon, OX14 3NB, United Kingdom  
Phone: (44) (0) 1235 529449  
Free Phone: 0800 37 34 15  
Fax: (44) (0) 1235 533420  
info.EMEA@bio-techne.com

### **General Contact Information**

www.novusbio.com  
Technical Support: nb-technical@bio-techne.com  
Orders: nb-customerservice@bio-techne.com  
General: novus@novusbio.com

### **Products Related to NBP1-47935**

---

NBP2-33376H	Blue Marker Antibody (6F4-F6) [HRP]
HAF007	Goat anti-Mouse IgG Secondary Antibody [HRP]
NB7539	Goat anti-Mouse IgG (H+L) Secondary Antibody [HRP]
NBP1-97005-0.5mg	Mouse IgG1 Isotype Control (MG1)

---

### **Limitations**

This product is for research use only and is not approved for use in humans or in clinical diagnosis. Primary Antibodies are guaranteed for 1 year from date of receipt.

For more information on our 100% guarantee, please visit [www.novusbio.com/guarantee](http://www.novusbio.com/guarantee)

Earn gift cards/discounts by submitting a review: [www.novusbio.com/reviews/submit/NBP1-47935](http://www.novusbio.com/reviews/submit/NBP1-47935)

Earn gift cards/discounts by submitting a publication using this product:  
[www.novusbio.com/publications](http://www.novusbio.com/publications)

