

Product Datasheet

Lactate Dehydrogenase A/LDHA Antibody (OTI2D11) NBP1-47822

Unit Size: 0.1 ml

Store at -20C. Avoid freeze-thaw cycles.

www.novusbio.com



technical@novusbio.com

Publications: 3

Protocols, Publications, Related Products, Reviews, Research Tools and Images at:
www.novusbio.com/NBP1-47822

Updated 9/9/2025 v.20.1

Earn rewards for product
reviews and publications.

Submit a publication at www.novusbio.com/publications

Submit a review at www.novusbio.com/reviews/destination/NBP1-47822



NBP1-47822**Lactate Dehydrogenase A/LDHA Antibody (OTI2D11)**

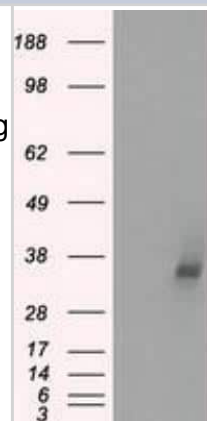
Product Information	
Unit Size	0.1 ml
Concentration	1 mg/ml
Storage	Store at -20C. Avoid freeze-thaw cycles.
Clonality	Monoclonal
Clone	OTI2D11
Preservative	0.02% Sodium Azide
Isotype	IgG1
Purity	Immunogen affinity purified
Buffer	PBS (pH 7.3), 1.0% BSA and 50% Glycerol
Target Molecular Weight	36.5 kDa

Product Description	
Description	Novus Biologicals Mouse Lactate Dehydrogenase A/LDHA Antibody (OTI2D11) (NBP1-47822) is a monoclonal antibody validated for use in IHC, WB, ICC/IF and IP. Anti-Lactate Dehydrogenase A/LDHA Antibody: Cited in 2 publications. All Novus Biologicals antibodies are covered by our 100% guarantee.
Host	Mouse
Gene ID	3939
Gene Symbol	LDHA
Species	Human, Mouse, Rat, Canine, Monkey
Reactivity Notes	Please note that this antibody is reactive to Mouse and derived from the same host, Mouse. Mouse-On-Mouse blocking reagent may be needed for IHC and ICC experiments to reduce high background signal. You can find these reagents under catalog numbers PK-2200-NB and MP-2400-NB. Please contact Technical Support if you have any questions.
Specificity/Sensitivity	This antibody is specific for Homo sapiens lactate dehydrogenase A (LDHA), transcript variant 1.
Immunogen	Full length human recombinant protein of human LDHA (NP_005557) produced in HEK293T cell.

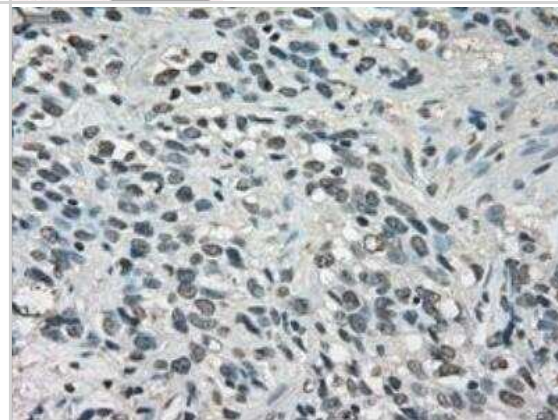
Product Application Details	
Applications	Western Blot, Immunohistochemistry-Paraffin, Immunocytochemistry/Immunofluorescence, Immunohistochemistry, Immunoprecipitation
Recommended Dilutions	Western Blot 1:1000, Immunohistochemistry 1:50, Immunocytochemistry/Immunofluorescence, Immunoprecipitation 2ug/500ul, Immunohistochemistry-Paraffin 1:50
Application Notes	WB, ICC/IF reactivity reported in (PMID: 22659615).

Images

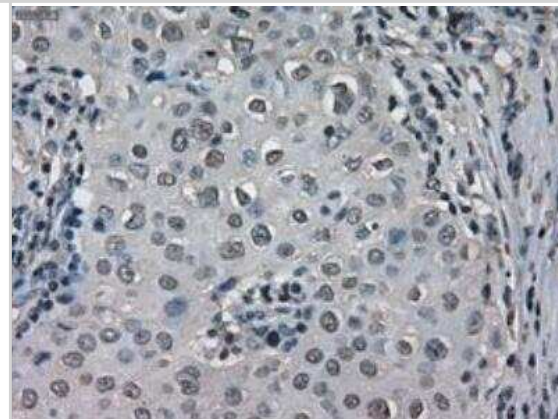
Western Blot: Lactate Dehydrogenase A/LDHA Antibody (2D11) [NBP1-47822] - HEK293T cells were transfected with the pCMV6-ENTRY control (Left lane) or pCMV6-ENTRY Lactate Dehydrogenase A (Right lane) cDNA for 48 hrs and lysed. Equivalent amounts of cell lysates (5 ug per lane) were separated by SDS-PAGE and immunoblotted with anti-Lactate Dehydrogenase A.



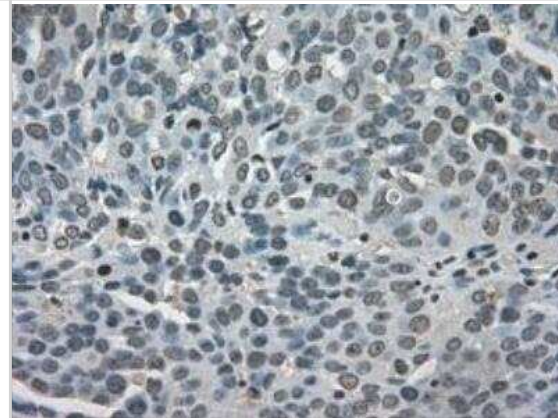
Immunohistochemistry-Paraffin: Lactate Dehydrogenase A/LDHA Antibody (2D11) [NBP1-47822] - Staining of paraffin-embedded Carcinoma of Human thyroid tissue using anti-Lactate Dehydrogenase A mouse monoclonal antibody.



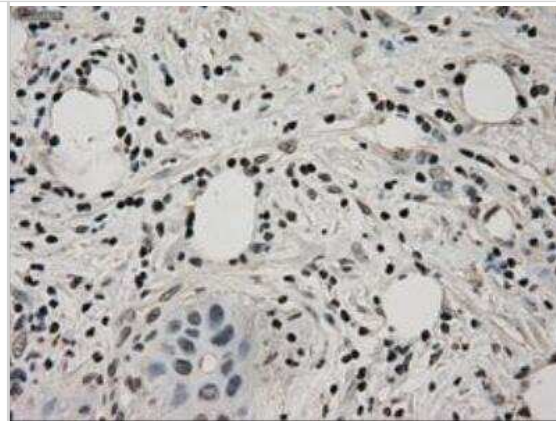
Immunohistochemistry-Paraffin: Lactate Dehydrogenase A/LDHA Antibody (2D11) [NBP1-47822] - Staining of paraffin-embedded Adenocarcinoma of Human breast tissue using anti-Lactate Dehydrogenase A mouse monoclonal antibody.



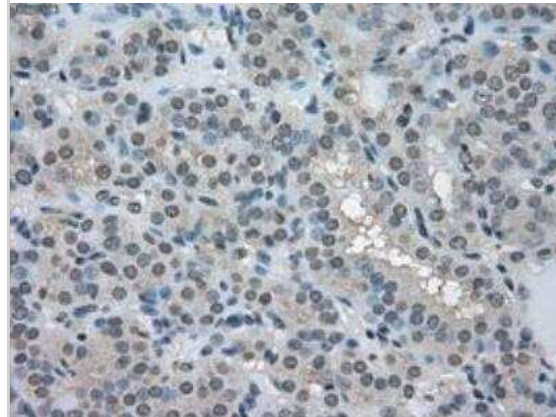
Immunohistochemistry-Paraffin: Lactate Dehydrogenase A/LDHA Antibody (2D11) [NBP1-47822] - Staining of paraffin-embedded Adenocarcinoma of Human endometrium tissue using anti-Lactate Dehydrogenase A mouse monoclonal antibody.



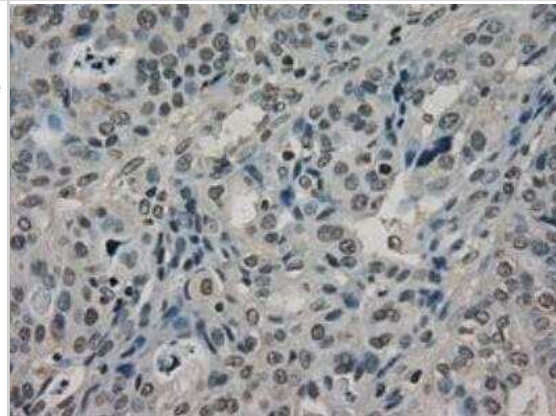
Immunohistochemistry-Paraffin: Lactate Dehydrogenase A/LDHA Antibody (2D11) [NBP1-47822] - Staining of paraffin-embedded Adenocarcinoma of Human ovary tissue using anti-Lactate Dehydrogenase A mouse monoclonal antibody.



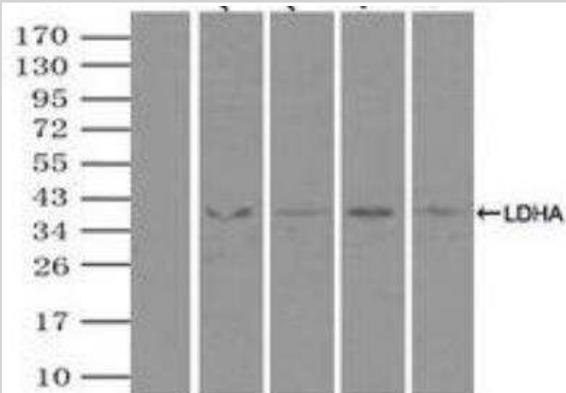
Immunohistochemistry-Paraffin: Lactate Dehydrogenase A/LDHA Antibody (2D11) [NBP1-47822] - Staining of paraffin-embedded Carcinoma of Human bladder tissue using anti-Lactate Dehydrogenase A mouse monoclonal antibody.



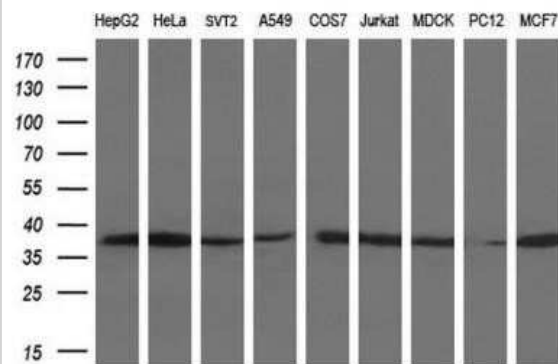
Immunohistochemistry-Paraffin: Lactate Dehydrogenase A/LDHA Antibody (2D11) [NBP1-47822] - Staining of paraffin-embedded Carcinoma of Human pancreas tissue using anti-Lactate Dehydrogenase A mouse monoclonal antibody.



Immunoprecipitation: Lactate Dehydrogenase A/LDHA Antibody (2D11) [NBP1-47822] - Lane 1: Negative Control Lane 2: NBP1-47824 Lane 3: NBP1-47825 Lane 4: NBP1-47823 Lane 5: NBP1-47822



Western Blot: Lactate Dehydrogenase A/LDHA Antibody (OTI2D11) [NBP1-47822] - Analysis of extracts (35ug) from 9 different cell lines by using anti-LDHA monoclonal antibody at 1:200 dilution. (HepG2: human; HeLa: human; SVT2: mouse; A549: human; COS7: monkey; Jurkat: human; MDCK: canine; PC12: rat; MCF7: human)



Publications

Lin, Y;Dubey, C;Losmanova, T;Yasmin, SO;Reymond, JL;Peng, RW;Deng, H;Dorn, P;Marti, TM; Inhibition of LDHB triggers DNA damage and increases cisplatin sensitivity in pleural mesothelioma *Oncogenesis* 2025-08-11 [PMID: 40790017]

Luo W, Chang R, Zhong J, Pandey A, Semenza GL. Histone demethylase JMJD2C is a coactivator for hypoxia-inducible factor 1 that is required for breast cancer progression. *Proc Natl Acad Sci U S A.* 2012-12-04 [PMID: 23129632]

Pizzuto R, Paventi G, Porcile C, Sarnataro D, Daniele A, Passarella S. L-Lactate metabolism in HEP G2 cell mitochondria due to the L-Lactate dehydrogenase determines the occurrence of the lactate/pyruvate shuttle and the appearance of oxaloacetate, malate and citrate outside mitochondria. *Biochim Biophys Acta.* 2012-05-31 [PMID: 22659615] (ICC/IF, WB, Human)



Novus Biologicals USA

10730 E. Briarwood Avenue
Centennial, CO 80112
USA
Phone: 303.730.1950
Toll Free: 1.888.506.6887
Fax: 303.730.1966
nb-customerservice@bio-techne.com

Bio-Techne Canada

21 Canmotor Ave
Toronto, ON M8Z 4E6
Canada
Phone: 905.827.6400
Toll Free: 855.668.8722
Fax: 905.827.6402
canada.inquires@bio-techne.com

Bio-Techne Ltd

19 Barton Lane
Abingdon Science Park
Abingdon, OX14 3NB, United Kingdom
Phone: (44) (0) 1235 529449
Free Phone: 0800 37 34 15
Fax: (44) (0) 1235 533420
info.EMEA@bio-techne.com

General Contact Information

www.novusbio.com
Technical Support: nb-technical@bio-techne.com
Orders: nb-customerservice@bio-techne.com
General: novus@novusbio.com

Products Related to NBP1-47822

NBP2-33376H	Blue Marker Antibody (6F4-F6) [HRP]
HAF007	Goat anti-Mouse IgG Secondary Antibody [HRP]
NB7539	Goat anti-Mouse IgG (H+L) Secondary Antibody [HRP]
NBP1-97005-0.5mg	Mouse IgG1 Isotype Control (MG1)

Limitations

This product is for research use only and is not approved for use in humans or in clinical diagnosis. Primary Antibodies are guaranteed for 1 year from date of receipt.

For more information on our 100% guarantee, please visit www.novusbio.com/guarantee

Earn gift cards/discounts by submitting a review: www.novusbio.com/reviews/submit/NBP1-47822

Earn gift cards/discounts by submitting a publication using this product:
www.novusbio.com/publications

