

Product Datasheet

Cytokeratin 18 Antibody (OT1E1) NBP1-47817

Unit Size: 0.1 ml

Store at -20C. Avoid freeze-thaw cycles.

www.novusbio.com



technical@novusbio.com

Protocols, Publications, Related Products, Reviews, Research Tools and Images at:
www.novusbio.com/NBP1-47817

Updated 9/9/2025 v.20.1

Earn rewards for product
reviews and publications.

Submit a publication at www.novusbio.com/publications

Submit a review at www.novusbio.com/reviews/destination/NBP1-47817



NBP1-47817**Cytokeratin 18 Antibody (OT1E1)**

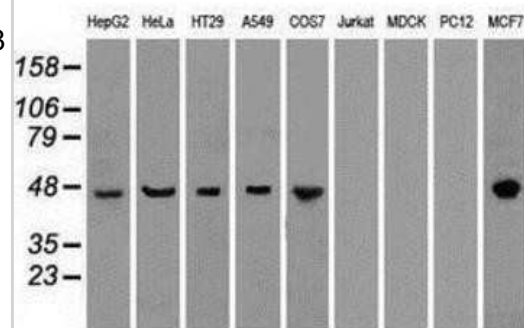
Product Information	
Unit Size	0.1 ml
Concentration	1 mg/ml
Storage	Store at -20C. Avoid freeze-thaw cycles.
Clonality	Monoclonal
Clone	OT1E1
Preservative	0.02% Sodium Azide
Isotype	IgG1
Purity	Immunogen affinity purified
Buffer	PBS (pH 7.3), 1.0% BSA and 50% Glycerol
Target Molecular Weight	47.9 kDa

Product Description	
Description	Novus Biologicals Mouse Cytokeratin 18 Antibody (OT1E1) (NBP1-47817) is a monoclonal antibody validated for use in IHC, WB and ICC/IF. All Novus Biologicals antibodies are covered by our 100% guarantee.
Host	Mouse
Gene ID	3875
Gene Symbol	KRT18
Species	Human, Mouse, Rat, Monkey
Reactivity Notes	Please note that this antibody is reactive to Mouse and derived from the same host, Mouse. Mouse-On-Mouse blocking reagent may be needed for IHC and ICC experiments to reduce high background signal. You can find these reagents under catalog numbers PK-2200-NB and MP-2400-NB. Please contact Technical Support if you have any questions.
Marker	Epithelial Marker
Specificity/Sensitivity	This antibody is specific for Homo sapiens keratin 18 (KRT18), transcript variant 2.
Immunogen	Human recombinant protein fragment corresponding to amino acids 69-372 of human CK18 (NP_000215) produced in E.coli.

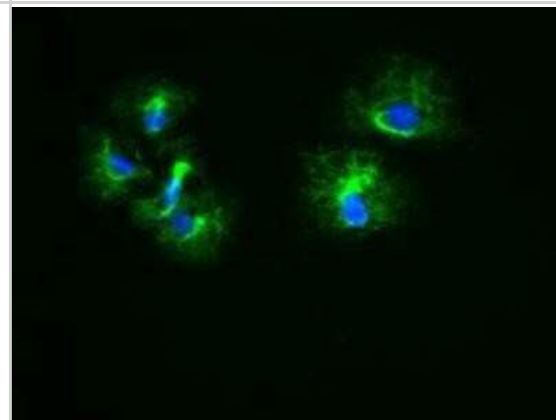
Product Application Details	
Applications	Western Blot, Immunohistochemistry-Paraffin, Immunocytochemistry/Immunofluorescence, Immunohistochemistry
Recommended Dilutions	Western Blot 1:500-1000, Immunohistochemistry 1:50, Immunocytochemistry/Immunofluorescence 1:100, Immunohistochemistry-Paraffin 1:50

Images

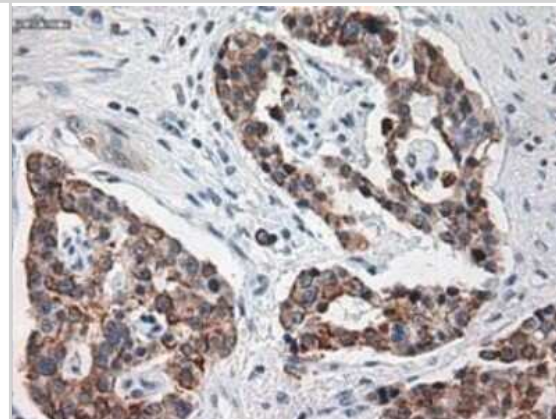
Western Blot: Cytokeratin 18 Antibody (OT11E1) [NBP1-47817] - Analysis of extracts (35ug) from 9 different cell lines by using anti-KRT18 monoclonal antibody.



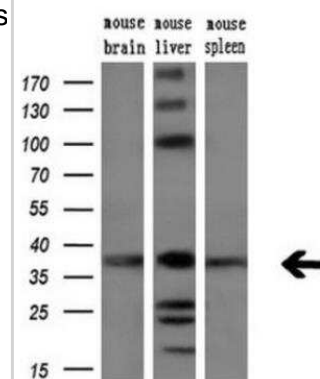
Immunocytochemistry/Immunofluorescence: Cytokeratin 18 Antibody (OT11E1) [NBP1-47817] - Staining of COS7 cells transiently transfected by pCMV6-ENTRY KRT18.



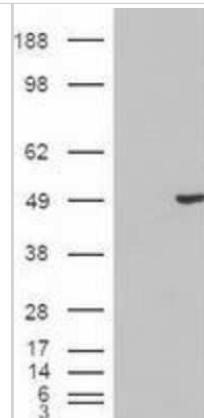
Immunohistochemistry-Paraffin: Cytokeratin 18 Antibody (OT11E1) [NBP1-47817] - Staining of paraffin-embedded Human pancreas tissue using anti-KRT18 mouse monoclonal antibody.



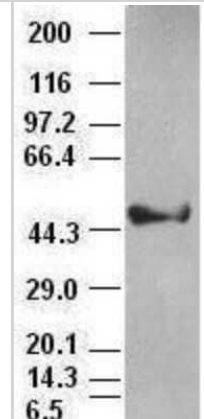
Western Blot: Cytokeratin 18 Antibody (OT11E1) [NBP1-47817] - Extracts (10ug) from 10 Human tissue by using Cytokeratin 18 monoclonal antibody at 1:200 (1: Testis; 2: Omentum; 3: Uterus; 4: Breast; 5: Brain; 6: Liver; 7: Ovary; 8: Thyroid gland; 9: colon; 10: spleen).



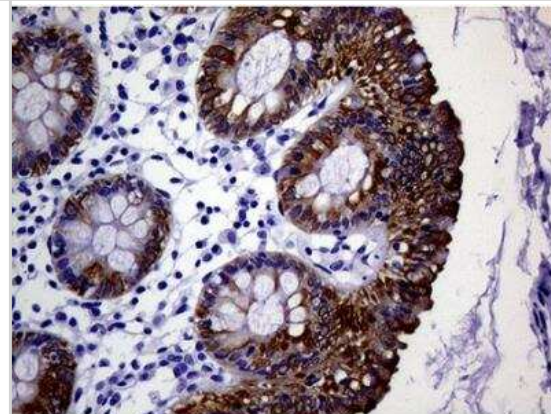
Western Blot: Cytokeratin 18 Antibody (OTI1E1) [NBP1-47817] - Cytokeratin 18 antibody (1E1) at 1:1000 dilution with HepG2 cell lysate



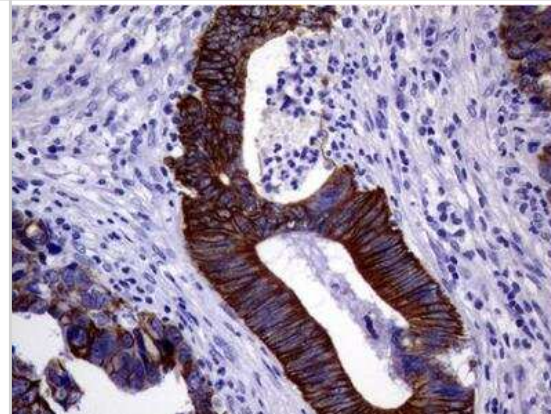
Western Blot: Cytokeratin 18 Antibody (OTI1E1) [NBP1-47817] - HEK293T cells were transfected with the pCMV6-ENTRY control (Left lane) or pCMV6-ENTRY KRT18 (Right lane) cDNA for 48 hrs and lysed. Equivalent amounts of cell lysates (5 ug per lane) were separated by SDS-PAGE and immunoblotted with anti-KRT18.



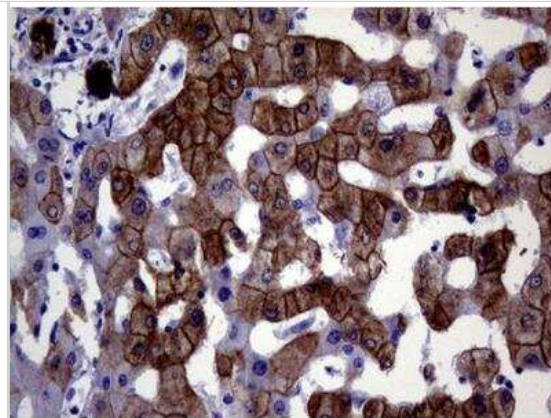
Immunohistochemistry-Paraffin: Cytokeratin 18 Antibody (OTI1E1) [NBP1-47817] - Staining of paraffin-embedded Human colon tissue within the normal limits. Heat-induced epitope retrieval by 10mM citric buffer, pH6.0, 100C for 10min.



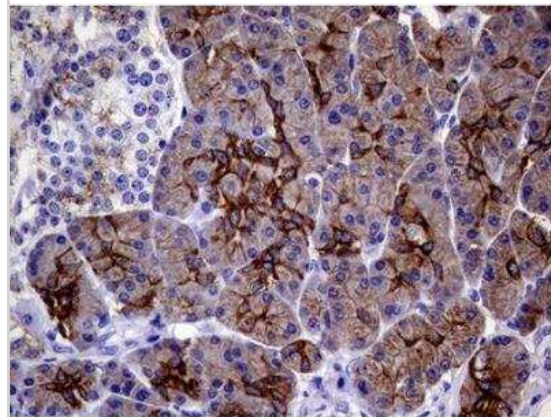
Immunohistochemistry-Paraffin: Cytokeratin 18 Antibody (OTI1E1) [NBP1-47817] - Staining of paraffin-embedded Adenocarcinoma of Human colon tissue. Heat-induced epitope retrieval by 10mM citric buffer, pH6.0, 100C for 10min.



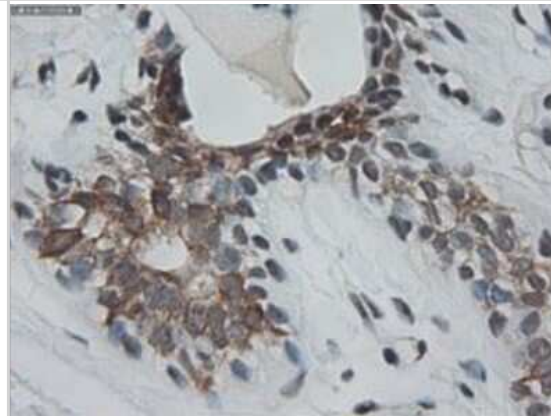
Immunohistochemistry-Paraffin: Cytokeratin 18 Antibody (OTI1E1) [NBP1-47817] - Staining of paraffin-embedded Human liver tissue within the normal limits. Heat-induced epitope retrieval by 1mM EDTA in 10mM Tris buffer (pH8.0) at 120C for 3 min, (1:6000).



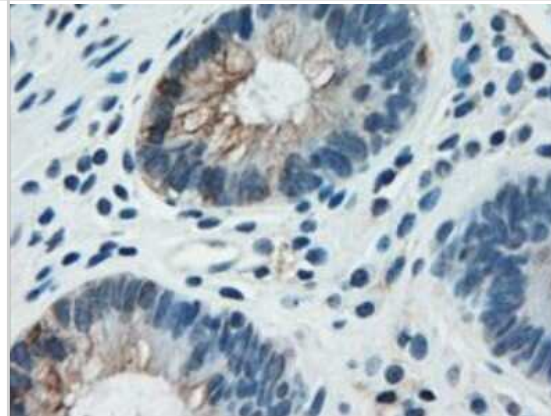
Immunohistochemistry-Paraffin: Cytokeratin 18 Antibody (OTI1E1) [NBP1-47817] - Staining of paraffin-embedded Human pancreas tissue within the normal limits. Heat-induced epitope retrieval by 10mM citric buffer, pH6.0, 100C for 10min.



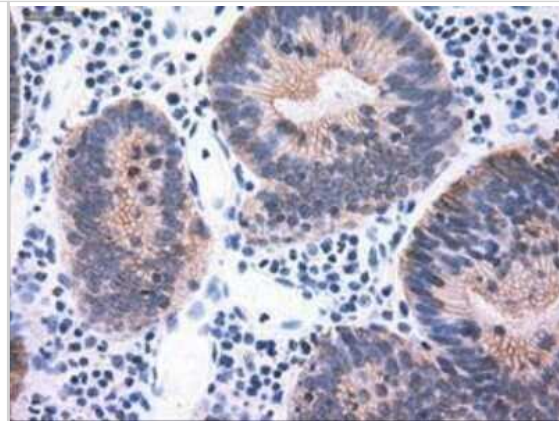
Immunohistochemistry-Paraffin: Cytokeratin 18 Antibody (OTI1E1) [NBP1-47817] - Staining of paraffin-embedded Adenocarcinoma of Human colon tissue using anti-KRT18 mouse monoclonal antibody.



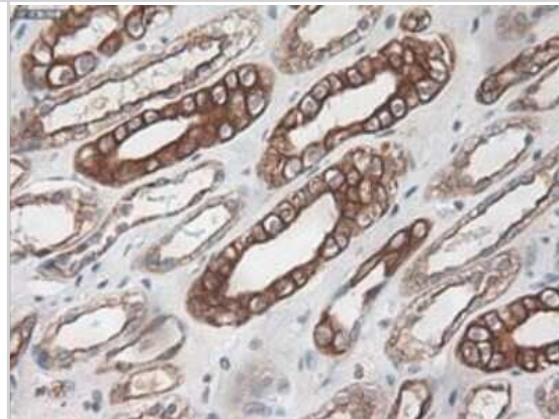
Immunohistochemistry-Paraffin: Cytokeratin 18 Antibody (OTI1E1) [NBP1-47817] - Staining of paraffin-embedded Carcinoma of Human kidney tissue using anti-KRT18 mouse monoclonal antibody.



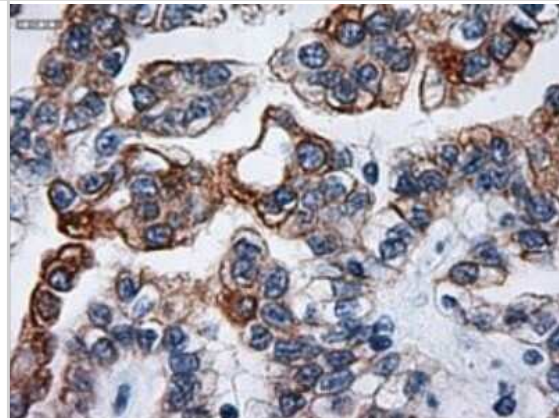
Immunohistochemistry-Paraffin: Cytokeratin 18 Antibody (OTI1E1) [NBP1-47817] - Staining of paraffin-embedded Carcinoma of Human liver tissue using anti-KRT18 mouse monoclonal antibody.



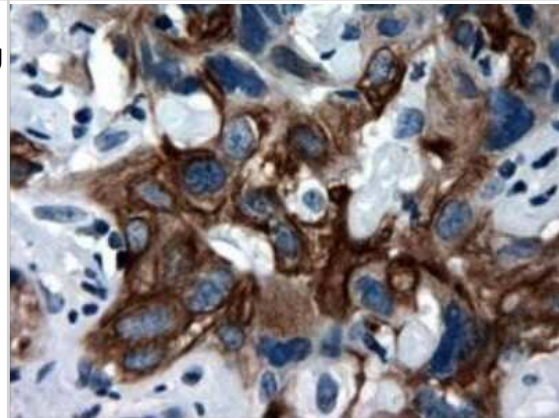
Immunohistochemistry-Paraffin: Cytokeratin 18 Antibody (OTI1E1) [NBP1-47817] - Staining of paraffin-embedded Carcinoma of Human pancreas tissue using anti-KRT18 mouse monoclonal antibody.



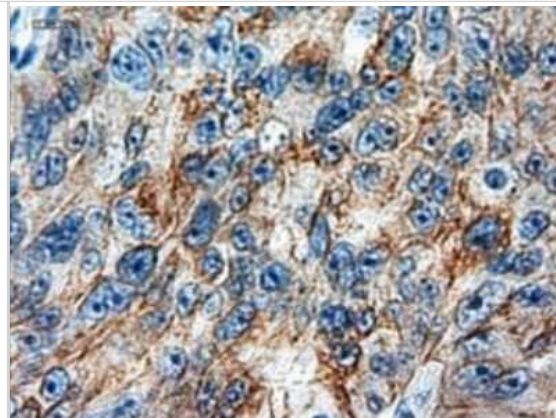
Immunohistochemistry-Paraffin: Cytokeratin 18 Antibody (OTI1E1) [NBP1-47817] - Staining of paraffin-embedded Human breast tissue using anti-KRT18 mouse monoclonal antibody.



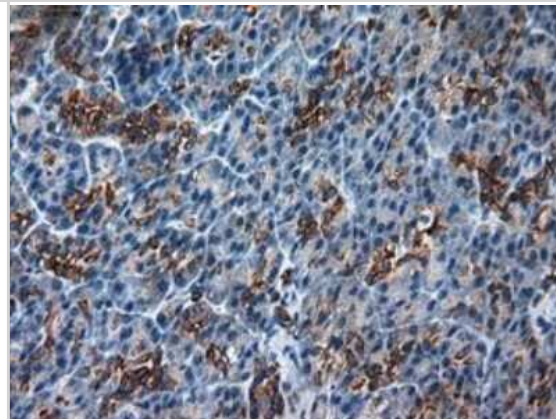
Immunohistochemistry-Paraffin: Cytokeratin 18 Antibody (OTI1E1) [NBP1-47817] - Staining of paraffin-embedded Human colon tissue using anti-KRT18 mouse monoclonal antibody.



Immunohistochemistry-Paraffin: Cytokeratin 18 Antibody (OTI1E1) [NBP1-47817] - Staining of paraffin-embedded Human endometrium tissue using anti-KRT18 mouse monoclonal antibody.



Immunohistochemistry-Paraffin: Cytokeratin 18 Antibody (OTI1E1) [NBP1-47817] - Staining of paraffin-embedded Human Kidney tissue using anti-KRT18 mouse monoclonal antibody.





Novus Biologicals USA

10730 E. Briarwood Avenue
Centennial, CO 80112
USA
Phone: 303.730.1950
Toll Free: 1.888.506.6887
Fax: 303.730.1966
nb-customerservice@bio-techne.com

Bio-Techne Canada

21 Canmotor Ave
Toronto, ON M8Z 4E6
Canada
Phone: 905.827.6400
Toll Free: 855.668.8722
Fax: 905.827.6402
canada.inquires@bio-techne.com

Bio-Techne Ltd

19 Barton Lane
Abingdon Science Park
Abingdon, OX14 3NB, United Kingdom
Phone: (44) (0) 1235 529449
Free Phone: 0800 37 34 15
Fax: (44) (0) 1235 533420
info.EMEA@bio-techne.com

General Contact Information

www.novusbio.com
Technical Support: nb-technical@bio-techne.com
Orders: nb-customerservice@bio-techne.com
General: novus@novusbio.com

Products Related to NBP1-47817

NBP2-33376H	Blue Marker Antibody (6F4-F6) [HRP]
HAF007	Goat anti-Mouse IgG Secondary Antibody [HRP]
NB7539	Goat anti-Mouse IgG (H+L) Secondary Antibody [HRP]
NBP1-97005-0.5mg	Mouse IgG1 Isotype Control (MG1)

Limitations

This product is for research use only and is not approved for use in humans or in clinical diagnosis. Primary Antibodies are guaranteed for 1 year from date of receipt.

For more information on our 100% guarantee, please visit www.novusbio.com/guarantee

Earn gift cards/discounts by submitting a review: www.novusbio.com/reviews/submit/NBP1-47817

Earn gift cards/discounts by submitting a publication using this product:
www.novusbio.com/publications

