

Product Datasheet

Carboxypeptidase A1/CPA1 Antibody (OTI2A3) NBP1-47704

Unit Size: 0.1 ml

Store at -20C. Avoid freeze-thaw cycles.

www.novusbio.com



technical@novusbio.com

Reviews: 1 Publications: 1

Protocols, Publications, Related Products, Reviews, Research Tools and Images at:
www.novusbio.com/NBP1-47704

Updated 9/9/2025 v.20.1

**Earn rewards for product
reviews and publications.**

Submit a publication at www.novusbio.com/publications

Submit a review at www.novusbio.com/reviews/destination/NBP1-47704



NBP1-47704**Carboxypeptidase A1/CPA1 Antibody (OTI2A3)**

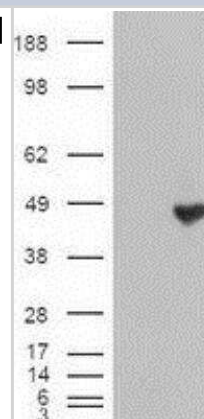
Product Information	
Unit Size	0.1 ml
Concentration	1 mg/ml
Storage	Store at -20C. Avoid freeze-thaw cycles.
Clonality	Monoclonal
Clone	OTI2A3
Preservative	0.02% Sodium Azide
Isotype	IgG2a
Purity	Immunogen affinity purified
Buffer	PBS (pH 7.3), 1.0% BSA and 50% Glycerol
Target Molecular Weight	45.5 kDa

Product Description	
Description	Novus Biologicals Mouse Carboxypeptidase A1/CPA1 Antibody (OTI2A3) (NBP1-47704) is a monoclonal antibody validated for use in IHC, WB and ICC/IF. Anti-Carboxypeptidase A1/CPA1 Antibody: Cited in 1 publication. All Novus Biologicals antibodies are covered by our 100% guarantee.
Host	Mouse
Gene ID	1357
Gene Symbol	CPA1
Species	Human
Specificity/Sensitivity	This antibody is specific for Homo sapiens carboxypeptidase A1 (pancreatic) (CPA1).
Immunogen	Recombinant protein expressed in E.coli corresponding to amino acids 1-419 of human CPA-1

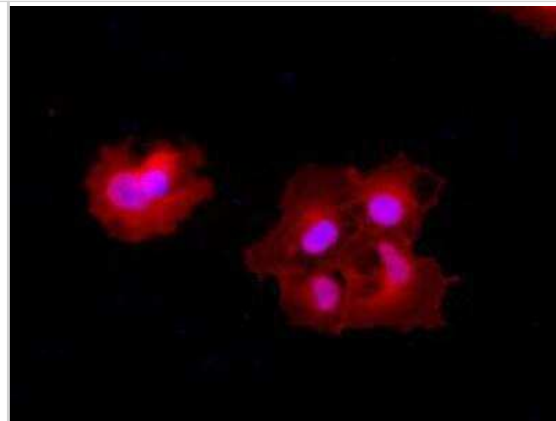
Product Application Details	
Applications	Western Blot, Immunohistochemistry-Paraffin, Immunocytochemistry/Immunofluorescence, Immunohistochemistry
Recommended Dilutions	Western Blot 1:1000, Immunohistochemistry 1:50, Immunocytochemistry/Immunofluorescence 1:100, Immunohistochemistry-Paraffin 1:50

Images

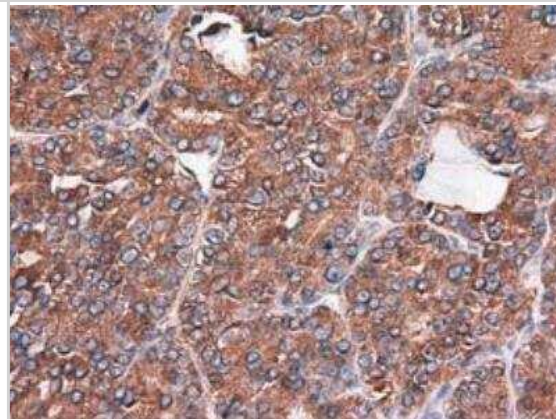
Western Blot: Carboxypeptidase A1/CPA1 Antibody (2A3) [NBP1-47704] - HEK293T cells were transfected with the pCMV6-ENTRY control (Left lane) or pCMV6-ENTRY Carboxypeptidase A (Right lane) cDNA for 48 hrs and lysed. Equivalent amounts of cell lysates (5 ug per lane) were separated by SDS-PAGE and immunoblotted with anti-Carboxypeptidase A.



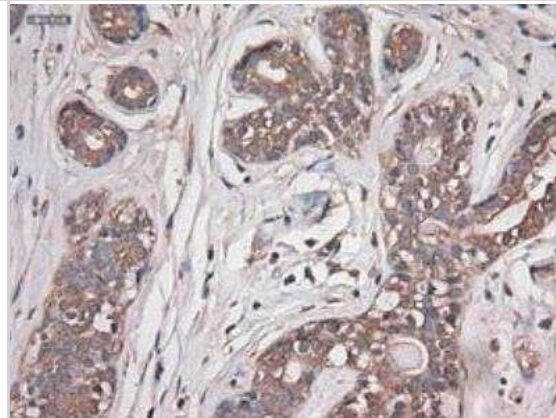
Immunocytochemistry/Immunofluorescence: Carboxypeptidase A1/CPA1 Antibody (2A3) [NBP1-47704] - Staining (Red) of COS7 cells transiently transfected by pCMV6-ENTRY Carboxypeptidase A.



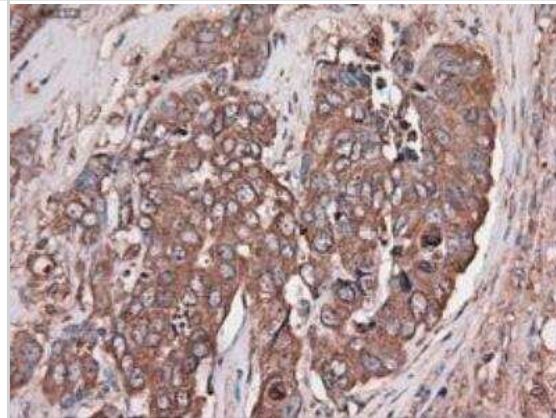
Immunohistochemistry-Paraffin: Carboxypeptidase A1/CPA1 Antibody (2A3) [NBP1-47704] - Staining of paraffin-embedded liver using anti-Carboxypeptidase A mouse monoclonal antibody.



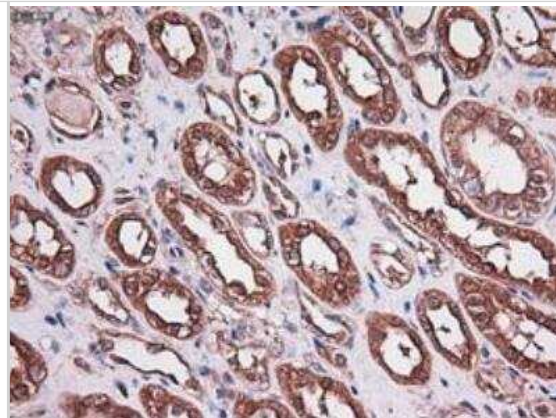
Immunohistochemistry-Paraffin: Carboxypeptidase A1/CPA1 Antibody (2A3) [NBP1-47704] - Staining of paraffin-embedded Adenocarcinoma of breast using anti-Carboxypeptidase A mouse monoclonal antibody.



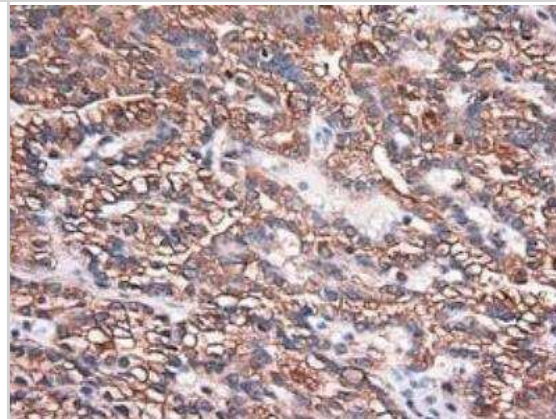
Immunohistochemistry-Paraffin: Carboxypeptidase A1/CPA1 Antibody (2A3) [NBP1-47704] - Staining of paraffin-embedded Adenocarcinoma of ovary using anti-Carboxypeptidase A mouse monoclonal antibody.



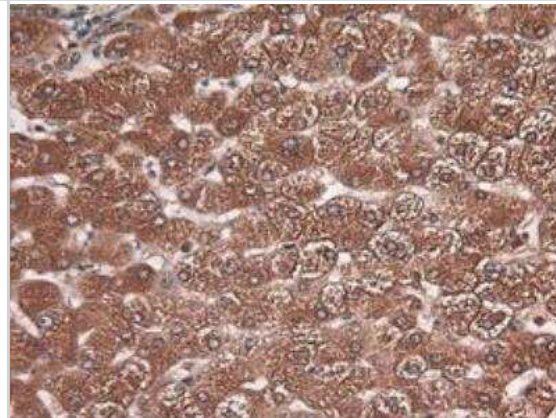
Immunohistochemistry-Paraffin: Carboxypeptidase A1/CPA1 Antibody (2A3) [NBP1-47704] - Staining of paraffin-embedded breast using anti-Carboxypeptidase A mouse monoclonal antibody.



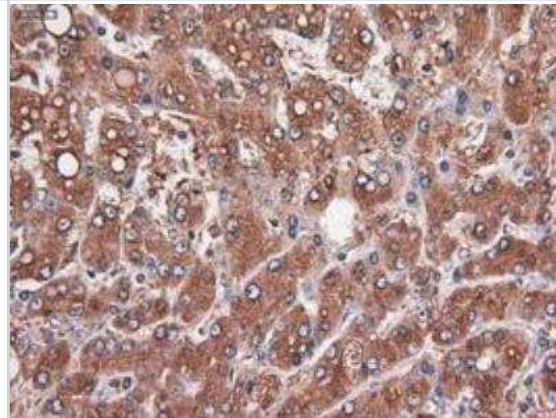
Immunohistochemistry-Paraffin: Carboxypeptidase A1/CPA1 Antibody (2A3) [NBP1-47704] - Staining of paraffin-embedded Carcinoma of kidney using anti-Carboxypeptidase A mouse monoclonal antibody.



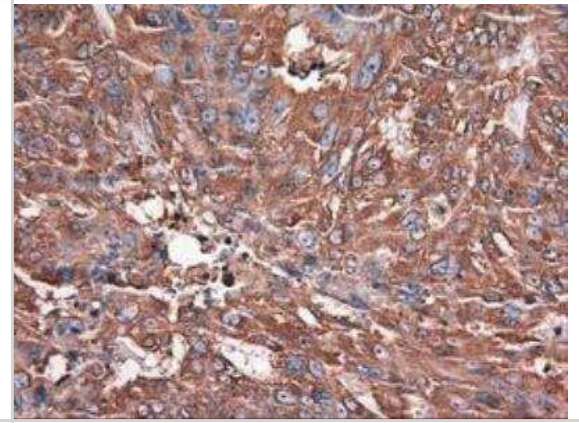
Immunohistochemistry-Paraffin: Carboxypeptidase A1/CPA1 Antibody (2A3) [NBP1-47704] - Staining of paraffin-embedded Carcinoma of liver using anti-Carboxypeptidase A mouse monoclonal antibody.



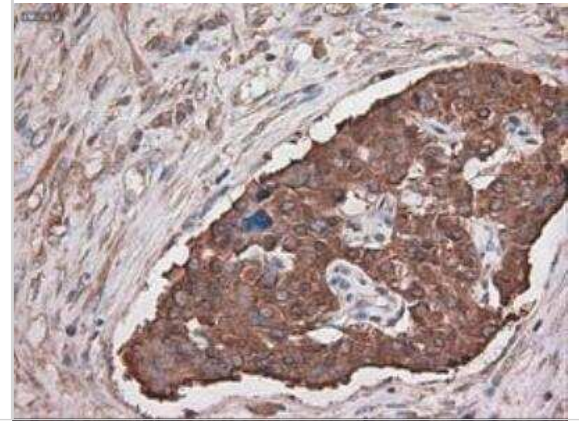
Immunohistochemistry-Paraffin: Carboxypeptidase A1/CPA1 Antibody (2A3) [NBP1-47704] - Staining of paraffin-embedded Carcinoma of pancreas using anti-Carboxypeptidase A mouse monoclonal antibody.



Immunohistochemistry-Paraffin: Carboxypeptidase A1/CPA1 Antibody (2A3) [NBP1-47704] - Staining of paraffin-embedded endometrium using anti-Carboxypeptidase A mouse monoclonal antibody.



Immunohistochemistry-Paraffin: Carboxypeptidase A1/CPA1 Antibody (2A3) [NBP1-47704] - Staining of paraffin-embedded kidney using anti-Carboxypeptidase A mouse monoclonal antibody.



Publications

Villani V, Thornton ME, Zook HN et al. SOX9+/PTF1A+ Cells Define the Tip Progenitor Cells of the Human Fetal Pancreas of the Second Trimester Stem Cells Transl Med 2019-10-21 [PMID: 31631582] (IF/IHC, Human)



Novus Biologicals USA

10730 E. Briarwood Avenue
Centennial, CO 80112
USA
Phone: 303.730.1950
Toll Free: 1.888.506.6887
Fax: 303.730.1966
nb-customerservice@bio-techne.com

Bio-Techne Canada

21 Canmotor Ave
Toronto, ON M8Z 4E6
Canada
Phone: 905.827.6400
Toll Free: 855.668.8722
Fax: 905.827.6402
canada.inquires@bio-techne.com

Bio-Techne Ltd

19 Barton Lane
Abingdon Science Park
Abingdon, OX14 3NB, United Kingdom
Phone: (44) (0) 1235 529449
Free Phone: 0800 37 34 15
Fax: (44) (0) 1235 533420
info.EMEA@bio-techne.com

General Contact Information

www.novusbio.com
Technical Support: nb-technical@bio-techne.com
Orders: nb-customerservice@bio-techne.com
General: novus@novusbio.com

Products Related to NBP1-47704

NBP2-33376H	Blue Marker Antibody (6F4-F6) [HRP]
HAF007	Goat anti-Mouse IgG Secondary Antibody [HRP]
NB7539	Goat anti-Mouse IgG (H+L) Secondary Antibody [HRP]
NBP1-96778	Mouse IgG2a Isotype Control (M2A)

Limitations

This product is for research use only and is not approved for use in humans or in clinical diagnosis. Primary Antibodies are guaranteed for 1 year from date of receipt.

For more information on our 100% guarantee, please visit www.novusbio.com/guarantee

Earn gift cards/discounts by submitting a review: www.novusbio.com/reviews/submit/NBP1-47704

Earn gift cards/discounts by submitting a publication using this product:
www.novusbio.com/publications

