

Product Datasheet

Glucose 6 phosphate isomerase Antibody (1B7D7) NBP1-47523

Unit Size: 0.1 ml

Store at 4C short term. Aliquot and store at -20C long term. Avoid freeze-thaw cycles.

www.novusbio.com



technical@novusbio.com

Publications: 2

Protocols, Publications, Related Products, Reviews, Research Tools and Images at:
www.novusbio.com/NBP1-47523

Updated 1/11/2026 v.20.1

Earn rewards for product
reviews and publications.

Submit a publication at www.novusbio.com/publications

Submit a review at www.novusbio.com/reviews/destination/NBP1-47523



NBP1-47523**Glucose 6 phosphate isomerase Antibody (1B7D7)**

Product Information	
Unit Size	0.1 ml
Concentration	This product is unpurified. The exact concentration of antibody is not quantifiable.
Storage	Store at 4C short term. Aliquot and store at -20C long term. Avoid freeze-thaw cycles.
Clonality	Monoclonal
Clone	1B7D7
Preservative	0.03% Sodium Azide
Isotype	IgG1
Purity	Ascites
Buffer	Ascites
Target Molecular Weight	63 kDa

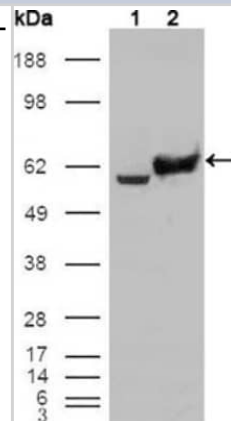
Product Description	
Description	Novus Biologicals Mouse Glucose 6 phosphate isomerase Antibody (1B7D7) (NBP1-47523) is a monoclonal antibody validated for use in IHC, WB, ELISA and ICC/IF. Anti-Glucose 6 phosphate isomerase Antibody: Cited in 2 publications. All Novus Biologicals antibodies are covered by our 100% guarantee.
Host	Mouse
Gene ID	2821
Gene Symbol	GPI
Species	Human
Immunogen	Purified recombinant fragment of human GPI expressed in E. Coli.

Product Application Details	
Applications	Western Blot, Immunohistochemistry-Paraffin, ELISA, Immunocytochemistry/ Immunofluorescence, Immunohistochemistry
Recommended Dilutions	Western Blot 1:500 - 1:2000, ELISA 1:10000, Immunohistochemistry 1:200 - 1:1000, Immunocytochemistry/ Immunofluorescence 1:200 - 1:1000, Immunohistochemistry-Paraffin 1:200 - 1:1000

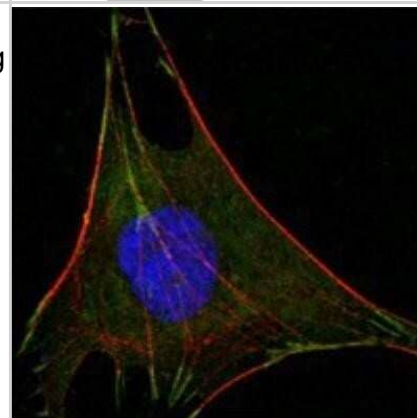


Images

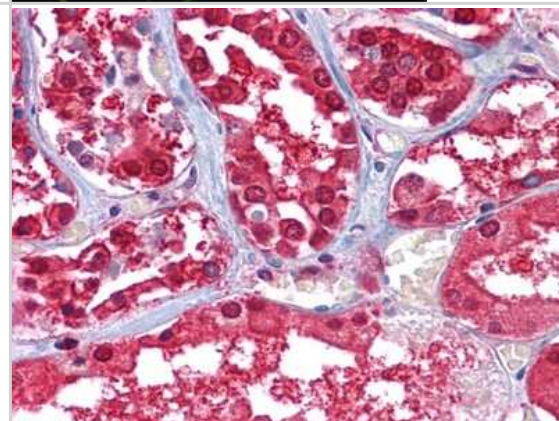
Western Blot: Glucose 6 phosphate isomerase Antibody (1B7D7) [NBP1-47523] - Analysis using GPI mouse mAb against HEK293T cells transfected with the pCMV6-ENTRY control (1) and pCMV6-ENTRY GPI cDNA (2).



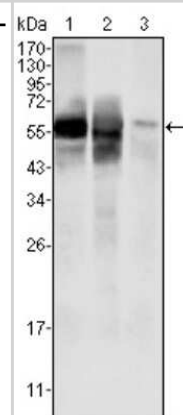
Immunocytochemistry/Immunofluorescence: Glucose 6 phosphate isomerase Antibody (1B7D7) [NBP1-47523] - Analysis of L-02 cells using GPI mouse mAb (green). Red: Actin filaments have been labeled with DY-554 phalloidin. Blue: DRAQ5 fluorescent DNA dye.



Immunohistochemistry-Paraffin: Glucose 6 phosphate isomerase Antibody (1B7D7) [NBP1-47523] - Analysis of human Kidney tissues using GPI mouse mAb.



Western Blot: Glucose 6 phosphate isomerase Antibody (1B7D7) [NBP1-47523] - Analysis using GPI mouse mAb against HepG2 (1), SMMC-7721 (2) cell lysate and rat liver tissues lysate (3).



Publications

Lucarelli G, Rutigliano M, Sanguedolce F et al. Increased Expression of the Autocrine Motility Factor is Associated With Poor Prognosis in Patients With Clear Cell-Renal Cell Carcinoma. *Medicine (Baltimore)*. 2015-11-01 [PMID: 26579829] (IHC-P, Human)

Lucarelli G, Galleggiante V, Rutigliano M et al. Metabolomic profile of glycolysis and the pentose phosphate pathway identifies the central role of glucose-6-phosphate dehydrogenase in clear cell-renal cell carcinoma. *Oncotarget*. [PMID: 25945836] (IHC-P, Human)

Details:

Citation using the FITC form of this antibody.





Novus Biologicals USA

10730 E. Briarwood Avenue
Centennial, CO 80112
USA
Phone: 303.730.1950
Toll Free: 1.888.506.6887
Fax: 303.730.1966
nb-customerservice@bio-techne.com

Bio-Techne Canada

21 Canmotor Ave
Toronto, ON M8Z 4E6
Canada
Phone: 905.827.6400
Toll Free: 855.668.8722
Fax: 905.827.6402
canada.inquires@bio-techne.com

Bio-Techne Ltd

19 Barton Lane
Abingdon Science Park
Abingdon, OX14 3NB, United Kingdom
Phone: (44) (0) 1235 529449
Free Phone: 0800 37 34 15
Fax: (44) (0) 1235 533420
info.EMEA@bio-techne.com

General Contact Information

www.novusbio.com
Technical Support: nb-technical@bio-techne.com
Orders: nb-customerservice@bio-techne.com
General: novus@novusbio.com

Products Related to NBP1-47523

NBP2-33376H	Blue Marker Antibody (6F4-F6) [HRP]
HAF007	Goat anti-Mouse IgG Secondary Antibody [HRP]
NB7539	Goat anti-Mouse IgG (H+L) Secondary Antibody [HRP]
NBP1-97005-0.5mg	Mouse IgG1 Isotype Control (MG1)

Limitations

This product is for research use only and is not approved for use in humans or in clinical diagnosis. Primary Antibodies are guaranteed for 1 year from date of receipt.

For more information on our 100% guarantee, please visit www.novusbio.com/guarantee

Earn gift cards/discounts by submitting a review: www.novusbio.com/reviews/submit/NBP1-47523

Earn gift cards/discounts by submitting a publication using this product:
www.novusbio.com/publications

