

# Product Datasheet

## actin-related protein 2/3 complex subunit 1B Antibody NBP1-46220

Unit Size: 0.1 ml

Store at 4C. Do not freeze.

[www.novusbio.com](http://www.novusbio.com)



[technical@novusbio.com](mailto:technical@novusbio.com)

Protocols, Publications, Related Products, Reviews, Research Tools and Images at:  
[www.novusbio.com/NBP1-46220](http://www.novusbio.com/NBP1-46220)

Updated 9/9/2025 v.20.1

Earn rewards for product  
reviews and publications.

Submit a publication at [www.novusbio.com/publications](http://www.novusbio.com/publications)

Submit a review at [www.novusbio.com/reviews/destination/NBP1-46220](http://www.novusbio.com/reviews/destination/NBP1-46220)



**NBP1-46220**

actin-related protein 2/3 complex subunit 1B Antibody

<b>Product Information</b>	
<b>Unit Size</b>	0.1 ml
<b>Concentration</b>	0.2 mg/ml
<b>Storage</b>	Store at 4C. Do not freeze.
<b>Clonality</b>	Polyclonal
<b>Preservative</b>	0.09% Sodium Azide
<b>Isotype</b>	IgG
<b>Purity</b>	Immunogen affinity purified
<b>Buffer</b>	TBS and 0.1% BSA

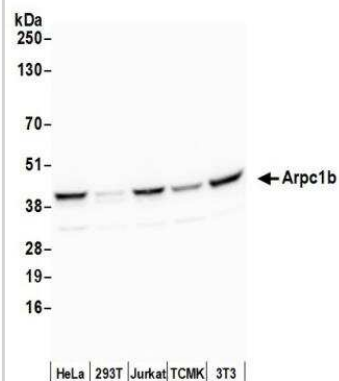
<b>Product Description</b>	
<b>Description</b>	Novus Biologicals Rabbit actin-related protein 2/3 complex subunit 1B Antibody (NBP1-46220) is a polyclonal antibody validated for use in WB and IP. All Novus Biologicals antibodies are covered by our 100% guarantee.
<b>Host</b>	Rabbit
<b>Gene ID</b>	10095
<b>Gene Symbol</b>	ARPC1B
<b>Species</b>	Human, Mouse
<b>Immunogen</b>	The immunogen for this product maps to a region between residue 322 and 372 of human Actin Related Protein 2/3 complex, Subunit 1B using the numbering given in entry NP_005711.1 (GeneID 10095).

<b>Product Application Details</b>	
<b>Applications</b>	Western Blot, Immunoprecipitation
<b>Recommended Dilutions</b>	Western Blot 1:2000-1:10000, Immunoprecipitation 2-10 ug/mg lysate
<b>Application Notes</b>	Western blot of lysates performed using standard western blot reagents and 4-20% SDS-PAGE.

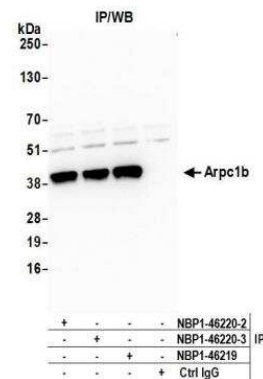


## Images

**Western Blot: actin-related protein 2/3 complex subunit 1B Antibody [NBP1-46220] - Detection of Human and Mouse Arpc1b by Western Blot.**  
**Samples:** Whole cell lysate (50 ug) from HeLa, 293T, Jurkat, mouse TCMK-1, and mouse NIH3T3 cells prepared using NETN lysis buffer.  
**Antibody:** Affinity purified rabbit anti-Arpc1b antibody NBP1-46220 used for WB at 0.1 ug/ml. **Detection:** Chemiluminescence with an exposure time of 30 seconds.



**Immunoprecipitation: actin-related protein 2/3 complex subunit 1B Antibody [NBP1-46220] - Detection of human Arpc1b by western blot of immunoprecipitates.** **Samples:** Whole cell lysate (0.5 or 1.0 mg per IP reaction; 20% of IP loaded) from HeLa cells prepared using NETN lysis buffer. **Antibodies:** Affinity purified rabbit anti-Arpc1b antibody NBP1-46220 (lot NBP1-46220-3) used for IP at 6 ug per reaction. Arpc1b was also immunoprecipitated by a previous lot of this antibody (lot NBP1-46220-2) and rabbit anti-Arpc1b antibody NBP1-46219. For blotting immunoprecipitated Arpc1b, NBP1-46220 was used at 1 ug/ml. **Detection:** Chemiluminescence with an exposure time of 30 seconds.





### **Novus Biologicals USA**

10730 E. Briarwood Avenue  
Centennial, CO 80112  
USA  
Phone: 303.730.1950  
Toll Free: 1.888.506.6887  
Fax: 303.730.1966  
nb-customerservice@bio-techne.com

### **Bio-Techne Canada**

21 Canmotor Ave  
Toronto, ON M8Z 4E6  
Canada  
Phone: 905.827.6400  
Toll Free: 855.668.8722  
Fax: 905.827.6402  
canada.inquires@bio-techne.com

### **Bio-Techne Ltd**

19 Barton Lane  
Abingdon Science Park  
Abingdon, OX14 3NB, United Kingdom  
Phone: (44) (0) 1235 529449  
Free Phone: 0800 37 34 15  
Fax: (44) (0) 1235 533420  
info.EMEA@bio-techne.com

### **General Contact Information**

www.novusbio.com  
Technical Support: nb-technical@bio-techne.com  
Orders: nb-customerservice@bio-techne.com  
General: novus@novusbio.com

### **Products Related to NBP1-46220**

---

NBP2-33376H	Blue Marker Antibody (6F4-F6) [HRP]
HAF008	Goat anti-Rabbit IgG Secondary Antibody [HRP]
NB7160	Goat anti-Rabbit IgG (H+L) Secondary Antibody [HRP]
NBP2-24891	Rabbit IgG Isotype Control

---

### **Limitations**

This product is for research use only and is not approved for use in humans or in clinical diagnosis. Primary Antibodies are guaranteed for 1 year from date of receipt.

For more information on our 100% guarantee, please visit [www.novusbio.com/guarantee](http://www.novusbio.com/guarantee)

Earn gift cards/discounts by submitting a review: [www.novusbio.com/reviews/submit/NBP1-46220](http://www.novusbio.com/reviews/submit/NBP1-46220)

Earn gift cards/discounts by submitting a publication using this product:  
[www.novusbio.com/publications](http://www.novusbio.com/publications)

