

Product Datasheet

Sulfatase Modifying Factor 1/SUMF1 Antibody NBP1-45212

Unit Size: 0.1 mg

Store at -20C. Avoid freeze-thaw cycles.

www.novusbio.com



technical@novusbio.com

Publications: 1

Protocols, Publications, Related Products, Reviews, Research Tools and Images at:
www.novusbio.com/NBP1-45212

Updated 9/9/2025 v.20.1

Earn rewards for product
reviews and publications.

Submit a publication at www.novusbio.com/publications

Submit a review at www.novusbio.com/reviews/destination/NBP1-45212



NBP1-45212**Sulfatase Modifying Factor 1/SUMF1 Antibody**

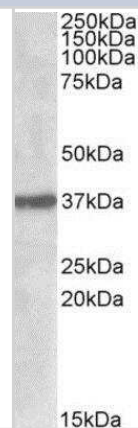
Product Information	
Unit Size	0.1 mg
Concentration	0.5 mg/ml
Storage	Store at -20C. Avoid freeze-thaw cycles.
Clonality	Polyclonal
Preservative	0.02% Sodium Azide
Isotype	IgG
Purity	Immunogen affinity purified
Buffer	Tris saline (20 mM Tris pH 7.3, 150 mM NaCl), 0.5% BSA

Product Description	
Description	Novus Biologicals Goat Sulfatase Modifying Factor 1/SUMF1 Antibody (NBP1-45212) is a polyclonal antibody validated for use in WB and ELISA. Anti-Sulfatase Modifying Factor 1/SUMF1 Antibody: Cited in 1 publication. All Novus Biologicals antibodies are covered by our 100% guarantee.
Host	Goat
Gene ID	285362
Gene Symbol	SUMF1
Species	Human, Mouse
Immunogen	Peptide with sequence C-ETLNPKGPPSGKDR corresponding to internal region according to NP_877437.2.

Product Application Details	
Applications	Western Blot, Peptide ELISA
Recommended Dilutions	Western Blot 0.5 - 2 ug/ml, Peptide ELISA Detection limit 1:16000
Application Notes	WB: Approx. 37-40 kDa band observed in mouse pancreas, mouse eye and human kidney lysates (calculated MW of 40.6 kDa band according to human NP_877437.2 and 40.6 kDa band according to mouse NP_666049.2).

Images

Western Blot: Sulfatase Modifying Factor 1/SUMF1 Antibody [NBP1-45212] - Analysis of SUMF1 in Mouse Pancreas lysate (35ug protein in RIPA buffer) using NBP1-45212 at 1ug/ml. Primary incubation was 1 hour. Detected by chemiluminescence.

**Publications**

Oshikawa M, Usami R, Kato S. Characterization of the arylsulfatase I (ARSI) gene preferentially expressed in the human retinal pigment epithelium cell line ARPE-19. Mol Vis 2009-01-01 [PMID: 19262745]



Novus Biologicals USA

10730 E. Briarwood Avenue
Centennial, CO 80112
USA
Phone: 303.730.1950
Toll Free: 1.888.506.6887
Fax: 303.730.1966
nb-customerservice@bio-techne.com

Bio-Techne Canada

21 Canmotor Ave
Toronto, ON M8Z 4E6
Canada
Phone: 905.827.6400
Toll Free: 855.668.8722
Fax: 905.827.6402
canada.inquires@bio-techne.com

Bio-Techne Ltd

19 Barton Lane
Abingdon Science Park
Abingdon, OX14 3NB, United Kingdom
Phone: (44) (0) 1235 529449
Free Phone: 0800 37 34 15
Fax: (44) (0) 1235 533420
info.EMEA@bio-techne.com

General Contact Information

www.novusbio.com
Technical Support: nb-technical@bio-techne.com
Orders: nb-customerservice@bio-techne.com
General: novus@novusbio.com

Products Related to NBP1-45212

NBP2-33376H	Blue Marker Antibody (6F4-F6) [HRP]
HAF017	Rabbit anti-Goat IgG Secondary Antibody [HRP (Horseradish Peroxidase)]
HAF109	Donkey anti-Goat IgG Secondary Antibody [HRP (Horseradish Peroxidase)]
NB410-28088-1mg	Goat IgG Isotype Control

Limitations

This product is for research use only and is not approved for use in humans or in clinical diagnosis. Primary Antibodies are guaranteed for 1 year from date of receipt.

For more information on our 100% guarantee, please visit www.novusbio.com/guarantee

Earn gift cards/discounts by submitting a review: www.novusbio.com/reviews/submit/NBP1-45212

Earn gift cards/discounts by submitting a publication using this product:
www.novusbio.com/publications



