

# Product Datasheet

## Kappa Light Chain Antibody (A8B5) - BSA Free NBP1-45067

Unit Size: 0.1 mg

Store at 4C. Do not freeze.

[www.novusbio.com](http://www.novusbio.com)



[technical@novusbio.com](mailto:technical@novusbio.com)

Protocols, Publications, Related Products, Reviews, Research Tools and Images at:  
[www.novusbio.com/NBP1-45067](http://www.novusbio.com/NBP1-45067)

Updated 9/9/2025 v.20.1

Earn rewards for product  
reviews and publications.

Submit a publication at [www.novusbio.com/publications](http://www.novusbio.com/publications)

Submit a review at [www.novusbio.com/reviews/destination/NBP1-45067](http://www.novusbio.com/reviews/destination/NBP1-45067)



**NBP1-45067**

Kappa Light Chain Antibody (A8B5) - BSA Free

| Product Information     |   |
|-------------------------|---|
| Unit Size               | 0.1 mg                                  |
| Concentration           | 1 mg/ml                                 |
| Storage                 | Store at 4C. Do not freeze.             |
| Clonality               | Monoclonal                              |
| Clone                   | A8B5                                    |
| Preservative            | 15mM Sodium Azide                       |
| Isotype                 | IgG1                                    |
| Purity                  | Protein A purified                      |
| Buffer                  | Phosphate buffered saline (PBS), pH 7.4 |
| Target Molecular Weight | 22.5 kDa                                |

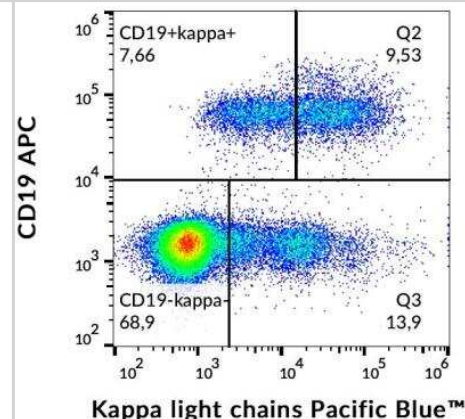
| Product Description     |  |
|-------------------------|--|
| Description             | Novus Biologicals Mouse Kappa Light Chain Antibody (A8B5) - BSA Free (NBP1-45067) is a monoclonal antibody validated for use in IHC, ELISA and Flow. All Novus Biologicals antibodies are covered by our 100% guarantee. |
| Host                    | Mouse  |
| Gene ID                 | 3514   |
| Gene Symbol             | IGKC   |
| Species                 | Human, Guinea Pig (Negative), Goat (Negative), Hamster (Negative), Rabbit (Negative), Sheep (Negative)   |
| Specificity/Sensitivity | The mouse monoclonal antibody 1D11 recognizes CD314 / NKG2D, a 42 kDa C-type lectin-like activating receptor expressed by NK cells, gamma/delta T cells, and CD8+ T cells.   |
| Immunogen               | The antibody A8B5 reacts with IGKC (22.5 kDa) of immunoglobulins.  |

| Product Application Details |  |
|-----------------------------|--|
| Applications                | Immunohistochemistry-Paraffin, ELISA, Flow Cytometry, Immunohistochemistry, Immunohistochemistry-Frozen, CyTOF-ready   |
| Recommended Dilutions       | Flow Cytometry 1-4 ug/ml, ELISA 1:2000, Immunohistochemistry 1:10-1:500, Immunohistochemistry-Paraffin 1:200, Immunohistochemistry-Frozen 1:200, CyTOF-ready |
| Application Notes           | This antibody is Cytof ready.  |

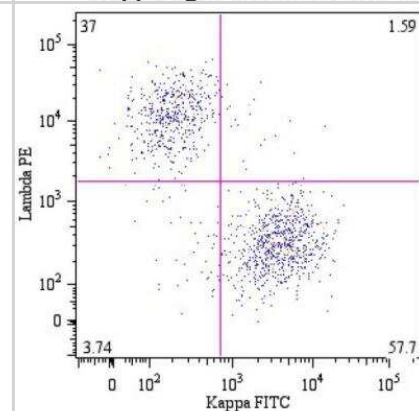


## Images

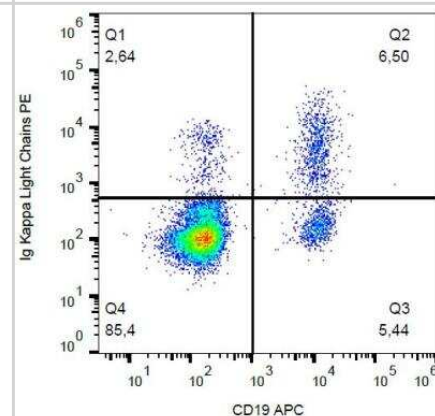
Flow Cytometry: Kappa Light Chain Antibody (A8B5) [NBP1-45067] - Surface staining of immunoglobulin kappa light chains in human peripheral blood with anti-kappa light chains (A8B5) Pacific Blue™.



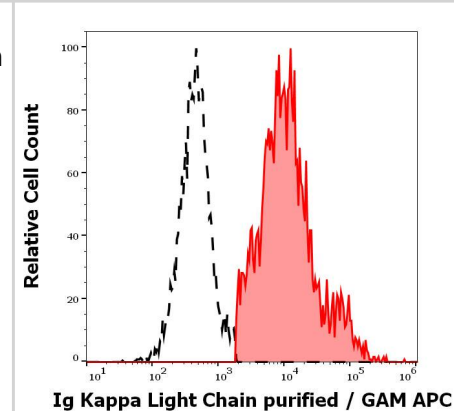
Flow Cytometry: Kappa Light Chain Antibody (A8B5) [NBP1-45067] - B lymphocytes (CD19+) in a dot-plot Lambda PE vs. Kappa FITC. Kappa light chain detected by A8B5 antibody and lambda light chain by 4C2 antibody, CD19 by LT19 antibody.



Flow Cytometry: Kappa Light Chain Antibody (A8B5) [NBP1-45067] - Surface staining of immunoglobulin kappa light chains in human peripheral blood with anti-kappa light chains (A8B5) PE.



Separation of human Ig Kappa Light Chain positive lymphocytes (red-filled) from Ig Kappa Light Chain negative lymphocytes (black-dashed) in Analysis (surface staining) of human peripheral whole blood stained using anti-human Ig Kappa Light Chain (A8B5) purified antibody (concentration in sample 4 ug/ml, GAM APC).





### **Novus Biologicals USA**

10730 E. Briarwood Avenue  
Centennial, CO 80112  
USA  
Phone: 303.730.1950  
Toll Free: 1.888.506.6887  
Fax: 303.730.1966  
nb-customerservice@bio-techne.com

### **Bio-Techne Canada**

21 Canmotor Ave  
Toronto, ON M8Z 4E6  
Canada  
Phone: 905.827.6400  
Toll Free: 855.668.8722  
Fax: 905.827.6402  
canada.inquires@bio-techne.com

### **Bio-Techne Ltd**

19 Barton Lane  
Abingdon Science Park  
Abingdon, OX14 3NB, United Kingdom  
Phone: (44) (0) 1235 529449  
Free Phone: 0800 37 34 15  
Fax: (44) (0) 1235 533420  
info.EMEA@bio-techne.com

### **General Contact Information**

www.novusbio.com  
Technical Support: nb-technical@bio-techne.com  
Orders: nb-customerservice@bio-techne.com  
General: novus@novusbio.com

### **Products Related to NBP1-45067**

---

|                  |  |
|------------------|--|
| HAF007           | Goat anti-Mouse IgG Secondary Antibody [HRP]       |
| NB7539           | Goat anti-Mouse IgG (H+L) Secondary Antibody [HRP] |
| NBP1-97005-0.5mg | Mouse IgG1 Isotype Control (MG1)                   |
| NBP1-45065       | Kappa Light Chain Antibody (A8B5) [FITC]           |

---

### **Limitations**

This product is for research use only and is not approved for use in humans or in clinical diagnosis. Primary Antibodies are guaranteed for 1 year from date of receipt.

For more information on our 100% guarantee, please visit [www.novusbio.com/guarantee](http://www.novusbio.com/guarantee)

Earn gift cards/discounts by submitting a review: [www.novusbio.com/reviews/submit/NBP1-45067](http://www.novusbio.com/reviews/submit/NBP1-45067)

Earn gift cards/discounts by submitting a publication using this product:  
[www.novusbio.com/publications](http://www.novusbio.com/publications)

