

Product Datasheet

PSMA/FOLH1/NAALADase I Antibody (GCP-05) - BSA Free NBP1-45058

Unit Size: 0.1 mg

Store at 4C. Do not freeze.

www.novusbio.com



technical@novusbio.com

Protocols, Publications, Related Products, Reviews, Research Tools and Images at:
www.novusbio.com/NBP1-45058

Updated 9/9/2025 v.20.1

Earn rewards for product
reviews and publications.

Submit a publication at www.novusbio.com/publications

Submit a review at www.novusbio.com/reviews/destination/NBP1-45058



NBP1-45058

PSMA/FOLH1/NAALADase I Antibody (GCP-05) - BSA Free

Product Information	
Unit Size	0.1 mg
Concentration	1 mg/ml
Storage	Store at 4C. Do not freeze.
Clonality	Monoclonal
Clone	GCP-05
Preservative	15mM Sodium Azide
Isotype	IgG1
Purity	Protein A purified
Buffer	Phosphate buffered saline (PBS), pH 7.4
Target Molecular Weight	110 kDa

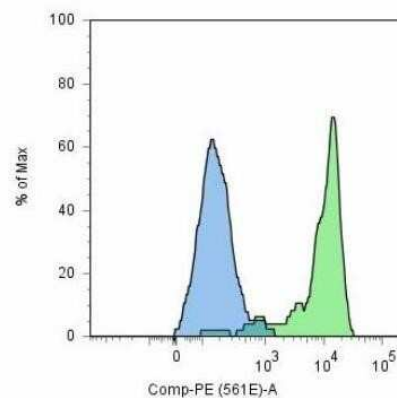
Product Description	
Description	Novus Biologicals Mouse PSMA/FOLH1/NAALADase I Antibody (GCP-05) - BSA Free (NBP1-45058) is a monoclonal antibody validated for use in Flow, ICC/IF and IP. All Novus Biologicals antibodies are covered by our 100% guarantee.
Host	Mouse
Gene ID	2346
Gene Symbol	FOLH1
Species	Human
Specificity/Sensitivity	The antibody GCP-05 recognizes extracellular domain of glutamate carboxypeptidase II (NAALADase, FOLH1, PSMA), an approximately 95-110 kDa transmembrane glycoprotein expressed mainly in tumour neovasculatures, nervous system and jejunum, which is an important prostate tumour marker.
Immunogen	amino acids 44-750 of human GCPII

Product Application Details	
Applications	Flow Cytometry, Immunocytochemistry/ Immunofluorescence, Immunoprecipitation, CyTOF-ready
Recommended Dilutions	Flow Cytometry 1-4 ug/ml, Immunocytochemistry/ Immunofluorescence 1:10-1:2000, Immunoprecipitation 1:50, CyTOF-ready
Application Notes	This antibody is Cyt of ready.

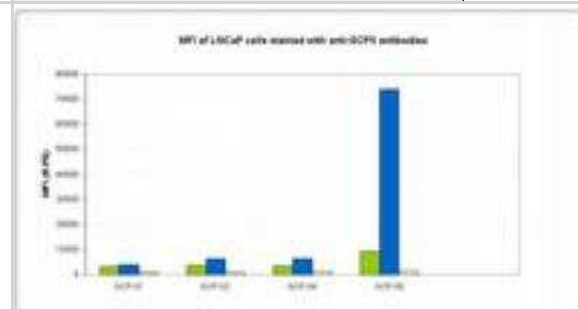


Images

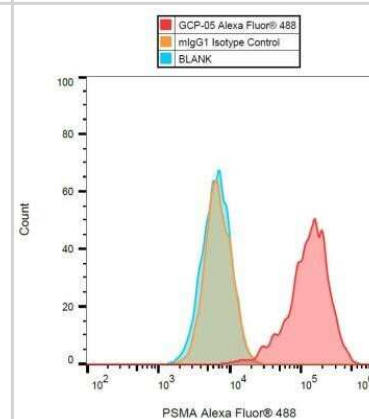
Flow Cytometry: PSMA/FOLH1/NAALADase I Antibody (GCP-05) [NBP1-45058] - Flow Cytometry: PSMA/FOLH1/NAALADase I Antibody (GCP-05) [PE] [NBP1-45056] - Surface staining (flow cytometry) of GCPII / PSMA using anti-GCPII (GCP-05) PE on LNCaP cell line. Image using the PE form of this antibody.



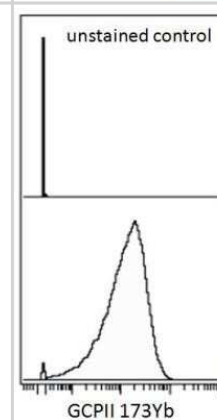
Flow Cytometry: PSMA/FOLH1/NAALADase I Antibody (GCP-05) [NBP1-45058] - Analysis of GCPII (PSMA) by various monoclonal antibodies (GCP-01, GCP-02, GCP-04, GCP-05) on LNCaP cell line. Legend: Green column - 1 ug/ml, LNCaP cell line Blue column - 5 ug/ml, LNCaP cell line Yellow column - negative cell line



Flow Cytometry: PSMA/FOLH1/NAALADase I Antibody (GCP-05) [NBP1-45058] - Flow Cytometry: PSMA/FOLH1/NAALADase I Antibody (GCP-05) [PE] [NBP1-45056] - Surface staining (flow cytometry) of GCPII / PSMA using anti-GCPII (GCP-05) Alexa Fluor 488 on LNCaP cell line. Image using the PE form of this antibody.



Flow Cytometry: PSMA/FOLH1/NAALADase I Antibody (GCP-05) [NBP1-45058] - Flow Cytometry: PSMA/FOLH1/NAALADase I Antibody (GCP-05) [PE] [NBP1-45056] - Surface staining (mass cytometry) of LNCaP cell line using anti-GCPII (GCP-05) 173Yb. Gated on singlets. Image using the PE form of this antibody.





Novus Biologicals USA

10730 E. Briarwood Avenue
Centennial, CO 80112
USA
Phone: 303.730.1950
Toll Free: 1.888.506.6887
Fax: 303.730.1966
nb-customerservice@bio-techne.com

Bio-Techne Canada

21 Canmotor Ave
Toronto, ON M8Z 4E6
Canada
Phone: 905.827.6400
Toll Free: 855.668.8722
Fax: 905.827.6402
canada.inquires@bio-techne.com

Bio-Techne Ltd

19 Barton Lane
Abingdon Science Park
Abingdon, OX14 3NB, United Kingdom
Phone: (44) (0) 1235 529449
Free Phone: 0800 37 34 15
Fax: (44) (0) 1235 533420
info.EMEA@bio-techne.com

General Contact Information

www.novusbio.com
Technical Support: nb-technical@bio-techne.com
Orders: nb-customerservice@bio-techne.com
General: novus@novusbio.com

Products Related to NBP1-45058

HAF007	Goat anti-Mouse IgG Secondary Antibody [HRP]
NB7539	Goat anti-Mouse IgG (H+L) Secondary Antibody [HRP]
NBP1-97005-0.5mg	Mouse IgG1 Isotype Control (MG1)
NBP1-45056	PSMA/FOLH1/NAALADase I Antibody (GCP-05) [PE]

Limitations

This product is for research use only and is not approved for use in humans or in clinical diagnosis. Primary Antibodies are guaranteed for 1 year from date of receipt.

For more information on our 100% guarantee, please visit www.novusbio.com/guarantee

Earn gift cards/discounts by submitting a review: www.novusbio.com/reviews/submit/NBP1-45058

Earn gift cards/discounts by submitting a publication using this product:
www.novusbio.com/publications

