

Product Datasheet

NKCC2/SLC12A1 Antibody - BSA Free NBP1-44269

Unit Size: 0.1 mg

Store at 4C short term. Aliquot and store at -20C long term. Avoid freeze-thaw cycles.

www.novusbio.com



technical@novusbio.com

Protocols, Publications, Related Products, Reviews, Research Tools and Images at:
www.novusbio.com/NBP1-44269

Updated 9/9/2025 v.20.1

Earn rewards for product
reviews and publications.

Submit a publication at www.novusbio.com/publications

Submit a review at www.novusbio.com/reviews/destination/NBP1-44269



NBP1-44269**NKCC2/SLC12A1 Antibody - BSA Free**

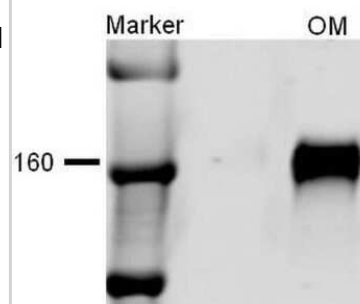
Product Information	
Unit Size	0.1 mg
Concentration	1 mg/ml
Storage	Store at 4C short term. Aliquot and store at -20C long term. Avoid freeze-thaw cycles.
Clonality	Polyclonal
Preservative	0.09% Sodium Azide
Isotype	IgG
Purity	Protein A purified
Buffer	PBS, 50% Glycerol

Product Description	
Description	Novus Biologicals Rabbit NKCC2/SLC12A1 Antibody - BSA Free (NBP1-44269) is a polyclonal antibody validated for use in IHC and WB. All Novus Biologicals antibodies are covered by our 100% guarantee.
Host	Rabbit
Gene ID	6557
Gene Symbol	SLC12A1
Species	Human, Mouse, Rat
Specificity/Sensitivity	Detects approx 160kDa.
Immunogen	Produced against a synthetic peptide mapping to a segment (amino acids 33-55) of the N-terminal tail of rat NKCC2 (antibody designation L224).

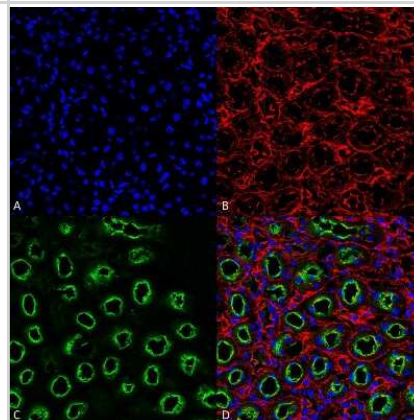
Product Application Details	
Applications	Western Blot, Immunohistochemistry
Recommended Dilutions	Western Blot 1:1000, Immunohistochemistry 1:10-1:500
Application Notes	1 ug/ml of NKCC2 Antibody was sufficient for detection of NKCC2 in 10 ug of rat kidney tissue lysate by colorimetric immunoblot analysis using Goat anti-rabbit IgG:HRP as the secondary Antibody.

Images

Western Blot: NKCC2/SLC12A1 Antibody [NBP1-44269] - Western blot analysis of Rat kidney tissue lysates showing detection of NKCC2/SLC12A1 protein using Rabbit Anti-NKCC2/SLC12A1 Polyclonal Antibody (NBP1-44269). Primary Antibody: Rabbit Anti-NKCC2/SLC12A1 Polyclonal Antibody (NBP1-44269) at 1:1000.



Immunohistochemistry: NKCC2/SLC12A1 Antibody [NBP1-44269] - Immunohistochemistry analysis using Rabbit Anti-NKCC2/SLC12A1 Polyclonal Antibody (NBP1-44269). Tissue: Kidney. Species: Rat. Fixation: Formalin Fixed Paraffin-Embedded. Primary Antibody: Rabbit Anti-NKCC2/SLC12A1 Polyclonal Antibody (NBP1-44269) at 1:25 for 1 hour at RT. Secondary Antibody: Goat Anti-Rabbit IgG: Alexa Fluor 488. Counterstain: Actin-binding Phalloidin-Alexa Fluor 633; DAPI (blue) nuclear stain. Magnification: 63X. (A) DAPI (blue) nuclear stain. (B) Phalloidin Alex Fluor 633 F-Actin stain. (C) NKCC2/SLC12A1 Antibody (D) Composite





Novus Biologicals USA

10730 E. Briarwood Avenue
Centennial, CO 80112
USA
Phone: 303.730.1950
Toll Free: 1.888.506.6887
Fax: 303.730.1966
nb-customerservice@bio-techne.com

Bio-Techne Canada

21 Canmotor Ave
Toronto, ON M8Z 4E6
Canada
Phone: 905.827.6400
Toll Free: 855.668.8722
Fax: 905.827.6402
canada.inquires@bio-techne.com

Bio-Techne Ltd

19 Barton Lane
Abingdon Science Park
Abingdon, OX14 3NB, United Kingdom
Phone: (44) (0) 1235 529449
Free Phone: 0800 37 34 15
Fax: (44) (0) 1235 533420
info.EMEA@bio-techne.com

General Contact Information

www.novusbio.com
Technical Support: nb-technical@bio-techne.com
Orders: nb-customerservice@bio-techne.com
General: novus@novusbio.com

Products Related to NBP1-44269

NBP2-33376H	Blue Marker Antibody (6F4-F6) [HRP]
HAF008	Goat anti-Rabbit IgG Secondary Antibody [HRP]
NB7160	Goat anti-Rabbit IgG (H+L) Secondary Antibody [HRP]
NBP2-24891	Rabbit IgG Isotype Control

Limitations

This product is for research use only and is not approved for use in humans or in clinical diagnosis. Primary Antibodies are guaranteed for 1 year from date of receipt.

For more information on our 100% guarantee, please visit www.novusbio.com/guarantee

Earn gift cards/discounts by submitting a review: www.novusbio.com/reviews/submit/NBP1-44269

Earn gift cards/discounts by submitting a publication using this product:
www.novusbio.com/publications

