

Product Datasheet

GM-CSFR alpha Antibody (4H1) - BSA Free NBP1-43361-0.1mg

Unit Size: 0.1 mg

Store at 4C. Do not freeze.

www.novusbio.com



technical@novusbio.com

Protocols, Publications, Related Products, Reviews, Research Tools and Images at:
www.novusbio.com/NBP1-43361

Updated 9/9/2025 v.20.1

Earn rewards for product
reviews and publications.

Submit a publication at www.novusbio.com/publications

Submit a review at www.novusbio.com/reviews/destination/NBP1-43361



NBP1-43361-0.1mg

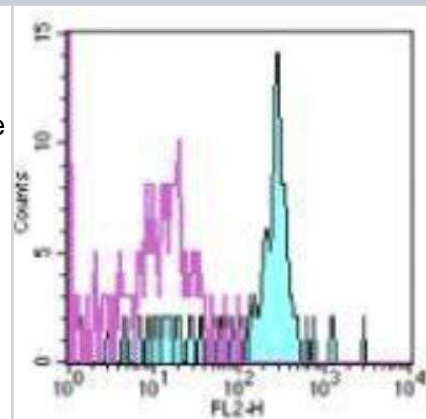
GM-CSFR alpha Antibody (4H1) - BSA Free

Product Information	
Unit Size	0.1 mg
Concentration	Concentrations vary lot to lot. See vial label for concentration. If unlisted please contact technical services.
Storage	Store at 4C. Do not freeze.
Clonality	Monoclonal
Clone	4H1
Preservative	0.09% Sodium Azide
Isotype	IgG1 Kappa
Purity	Protein A or G purified
Buffer	PBS (pH 7.2)
Product Description	
Description	Novus Biologicals Mouse GM-CSFR alpha Antibody (4H1) - BSA Free (NBP1-43361) is a monoclonal antibody validated for use in Flow. All Novus Biologicals antibodies are covered by our 100% guarantee.
Host	Mouse
Gene ID	1438
Gene Symbol	CSF2RA
Species	Human
Immunogen	The immunogen for this antibody was CD116.
Product Application Details	
Applications	Flow Cytometry
Recommended Dilutions	Flow Cytometry
Application Notes	The 4H1 antibody has been tested by flow cytometric analysis of human peripheral blood leukocytes. This can be used at less than or equal to 1 ug per test. Cell number should be determined empirically but can range from 10 ⁵ to 10 ⁸ cells/test.

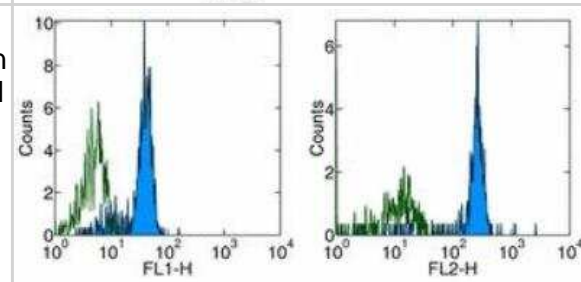


Images

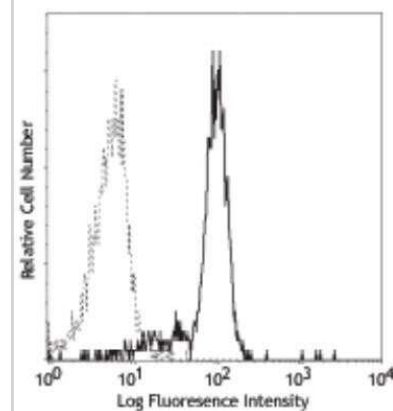
Flow Cytometry: GM-CSF R alpha Antibody (4H1) [NBP1-43361] - Analysis using the PE conjugate of NBP1-43361. Analysis of human peripheral blood leukocytes using GM-CSF R alpha PE conjugate. This can be used at less than or equal to 1 ug per test. Cell number should be determined empirically but can range from 10^5 to 10^8 cells/test.



Flow Cytometry: GM-CSF R alpha Antibody (4H1) [NBP1-43361] - Surface staining of normal human peripheral blood cells with Anti-Human CD116 FITC (left) and PE (right). Appropriate isotype controls were used (open histogram). Cells in the monocyte population were used for analysis.



Flow Cytometry: GM-CSF R alpha Antibody (4H1) [NBP1-43361] - Human peripheral blood monocytes stained with 4H1 FITC.





Novus Biologicals USA

10730 E. Briarwood Avenue
Centennial, CO 80112
USA
Phone: 303.730.1950
Toll Free: 1.888.506.6887
Fax: 303.730.1966
nb-customerservice@bio-techne.com

Bio-Techne Canada

21 Canmotor Ave
Toronto, ON M8Z 4E6
Canada
Phone: 905.827.6400
Toll Free: 855.668.8722
Fax: 905.827.6402
canada.inquires@bio-techne.com

Bio-Techne Ltd

19 Barton Lane
Abingdon Science Park
Abingdon, OX14 3NB, United Kingdom
Phone: (44) (0) 1235 529449
Free Phone: 0800 37 34 15
Fax: (44) (0) 1235 533420
info.EMEA@bio-techne.com

General Contact Information

www.novusbio.com
Technical Support: nb-technical@bio-techne.com
Orders: nb-customerservice@bio-techne.com
General: novus@novusbio.com

Products Related to NBP1-43361-0.1mg

HAF007	Goat anti-Mouse IgG Secondary Antibody [HRP]
NB7539	Goat anti-Mouse IgG (H+L) Secondary Antibody [HRP]
NBP1-43319-0.5mg	Mouse IgG1 Kappa Isotype Control (P3.6.2.8.1)
M6000B-1	IL-6 [HRP]

Limitations

This product is for research use only and is not approved for use in humans or in clinical diagnosis. Primary Antibodies are guaranteed for 1 year from date of receipt.

For more information on our 100% guarantee, please visit www.novusbio.com/guarantee

Earn gift cards/discounts by submitting a review: www.novusbio.com/reviews/submit/NBP1-43361

Earn gift cards/discounts by submitting a publication using this product:
www.novusbio.com/publications

