

# Product Datasheet

## BRCA1 Antibody (17F8) - Azide and BSA Free NBP1-41185

Unit Size: 100 ul

Store at 4C short term. Aliquot and store at -20C long term. Avoid freeze-thaw cycles.

[www.novusbio.com](http://www.novusbio.com)



[technical@novusbio.com](mailto:technical@novusbio.com)

**Publications: 11**

Protocols, Publications, Related Products, Reviews, Research Tools and Images at:  
[www.novusbio.com/NBP1-41185](http://www.novusbio.com/NBP1-41185)

Updated 9/25/2025 v.20.1

Earn rewards for product  
reviews and publications.

Submit a publication at [www.novusbio.com/publications](http://www.novusbio.com/publications)

Submit a review at [www.novusbio.com/reviews/destination/NBP1-41185](http://www.novusbio.com/reviews/destination/NBP1-41185)



**NBP1-41185**

BRCA1 Antibody (17F8) - Azide and BSA Free

Product Information	
Unit Size	100 ul
Concentration	Concentrations vary lot to lot. See vial label for concentration. If unlisted please contact technical services.
Storage	Store at 4C short term. Aliquot and store at -20C long term. Avoid freeze-thaw cycles.
Clonality	Monoclonal
Clone	17F8
Preservative	No Preservative
Isotype	IgG1
Purity	Protein G purified
Buffer	PBS
Target Molecular Weight	208 kDa

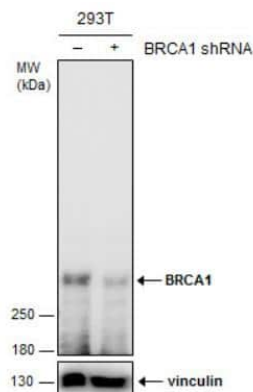
Product Description	
Description	Novus Biologicals Knockout (KO) Validated Mouse BRCA1 Antibody (17F8) - Azide and BSA Free (NBP1-41185) is a monoclonal antibody validated for use in IHC, WB, ELISA, ICC/IF, IP and CHIP. Anti-BRCA1 Antibody: Cited in 11 publications. All Novus Biologicals antibodies are covered by our 100% guarantee.
Host	Mouse
Gene ID	672
Gene Symbol	BRCA1
Species	Human, Mouse
Reactivity Notes	Please note that this antibody is reactive to Mouse and derived from the same host, Mouse. Mouse-On-Mouse blocking reagent may be needed for IHC and ICC experiments to reduce high background signal. You can find these reagents under catalog numbers PK-2200-NB and MP-2400-NB. Please contact Technical Support if you have any questions.
Specificity/Sensitivity	This antibody does not recognize the delta exon 11 splice variant of BRCA1. In a high proportion of breast and ovarian cancer cell lines, BRCA1 aberrantly mislocates to the cytoplasm.
Immunogen	Protein fragment expressed in E. coli corresponding to amino acids 762-1315.

Product Application Details	
Applications	Western Blot, Immunohistochemistry-Paraffin, ELISA, Immunocytochemistry/Immunofluorescence, Immunohistochemistry, Immunoprecipitation, Chromatin Immunoprecipitation (ChIP)
Recommended Dilutions	Western Blot 1:500-1:3000, ELISA Assay dependent, Immunohistochemistry Assay dependent, Immunocytochemistry/Immunofluorescence 1 ug/ml, Immunoprecipitation Assay dependent, Immunohistochemistry-Paraffin Assay dependent, Chromatin Immunoprecipitation (ChIP) Assay dependent

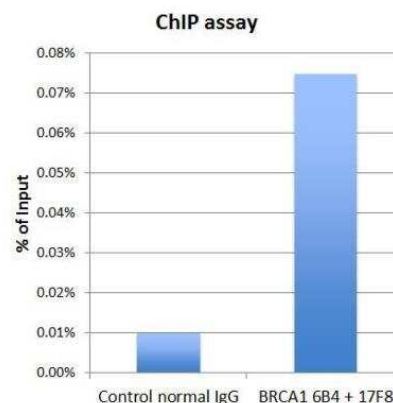


## Images

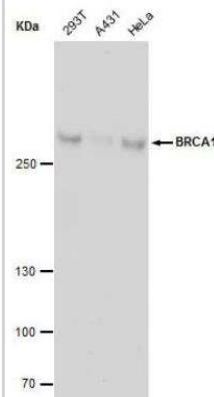
Western Blot: BRCA1 Antibody (17F8) [NBP1-41185] - Non-transfected (-) and transfected (+) 293T whole cell extracts (60 ug) were separated by 5% SDS-PAGE, and the membrane was blotted with BRCA1 antibody [17F8] - CHIP grade.



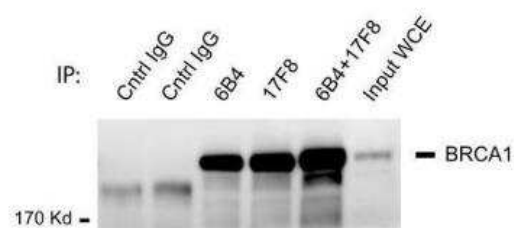
Chromatin Immunoprecipitation: BRCA1 Antibody (17F8) [NBP1-41185] - CHIP grade BRCA1 antibody 6B4 and BRCA1 antibody 17F8 were used for ChIP assay. The 6B4 and 17F8 mixture (3 microgram each), or normal mouse IgG (6 microgram) were incubated with HeLa chromatin extract (100 umicrogram each) in the ChIP assay. Enrichment of genomic DNA on a BRCA1 target gene promoter (HMGA2) was validated by a Q-PCR assay.



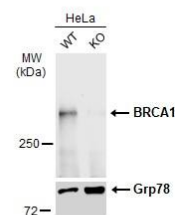
Western Blot: BRCA1 Antibody (17F8) [NBP1-41185] - CHIP grade detects BRCA1 protein by western blot analysis. Various whole cell extracts (30 ug) were separated by 5 % SDS-PAGE, and blotted with BRCA1 antibody [17F8] - CHIP grade BRCA1 diluted by 1:500



Immunoprecipitation: BRCA1 Antibody (17F8) [NBP1-41185] - BRCA1 antibody 6B4 and BRCA1 antibody 17F8 was used for IP-WB assay. 6B4 alone (4 microgram), 17F8 alone (4 microgram), 6B4 plus 17F8 (2 microgram each), and mouse control normal IgG were used in an immunoprecipitation assay with MCF7 cell extract. Immunoprecipitated BRCA1 was detected in WB using BRCA1 antibody 6B4 at 1:1000 dilution. HeLa whole cell extract (20 microgram) was used as input in the Western blot assay.



Western Blot: BRCA1 Antibody (17F8) [NBP1-41185] - Wild-type (WT) and BRCA1 knockout (KO) HeLa cell extracts (30 ug) were separated by 5% SDS-PAGE, and the membrane was blotted with BRCA1 antibody [17F8] - ChIP grade diluted at 1:500. The HRP-conjugated anti-mouse IgG antibody was used to detect the primary antibody, and the signal was developed with Trident ECL plus-Enhanced.



## Publications

Wang S, Chang CW, Huang J et al. Gasdermin C sensitizes tumor cells to PARP inhibitor therapy in cancer models The Journal of clinical investigation 2023-10-26 [PMID: 37883181] (KO, WB, Human, Mouse)

Manchana T, Tantbiroj P, Pohthipornthawat N BRCA immunohistochemistry for screening of BRCA mutation in epithelial ovarian cancer patients Gynecologic Oncology Reports 2020-05-01 [PMID: 32529018] (IHC-P, Human)

Bosviel R, Dumollard E, Dechelotte P et al. Can soy phytoestrogens decrease DNA methylation in BRCA1 and BRCA2 oncosuppressor genes in breast cancer? OMICS 2012-05-01 [PMID: 22339411] (ICC/IF, WB, Human)

Vardi A, Bosviel R, Rabiau N et al. Soy phytoestrogens modify DNA methylation of GSTP1, RASSF1A, EPH2 and BRCA1 promoter in prostate cancer cells. In Vivo 2010-07-01 [PMID: 20668305] (ICC/IF, WB, Human)

Oishi H, Kitagawa H, Wada O et al. An hGCN5/TRRAP histone acetyltransferase complex co-activates BRCA1 transactivation function through histone modification. J Biol Chem 2006-01-01 [PMID: 16260778] (ICC/IF, WB, Human)

Bernard-Gallon DJ, Dechelotte PJ, Le Corre L et al. Differential expressions of BRCA1 and BRCA2 in infantile gynecomastia. Anticancer Res 2004-01-01 [PMID: 15015615] (ICC/IF, WB, Human)

Ongusaha PP, Ouchi T, Kim KT et al. BRCA1 shifts p53-mediated cellular outcomes towards irreversible growth arrest. Oncogene 2003-06-01 [PMID: 12802282] (ICC/IF, WB, Human)

Arizti P, Fang L, Park I et al. Tumor suppressor p53 is required to modulate BRCA1 expression. Mol Cell Biol 2000-10-01 [PMID: 11003642] (ICC/IF, WB, Human)

Lu M, Arrick BA. Transactivation of the p21 promoter by BRCA1 splice variants in mammary epithelial cells: evidence for both common and distinct activities of wildtype and mutant forms. Oncogene 2000-12-01 [PMID: 11175350] (WB, ICC/IF, Human)

de Toledo SM, Azzam EI, Dahlberg WK et al. ATM complexes with HDM2 and promotes its rapid phosphorylation in a p53-independent manner in normal and tumor human cells exposed to ionizing radiation. Oncogene 2000-12-01 [PMID: 11175332] (ICC/IF, WB, Human)

Bernard-Gallon DJ, Dechelotte P, Vissac C et al. BRCA1 and BRCA2 protein expressions in an ovotestis of a 46, XX true hermaphrodite. Breast Cancer Res 2001-01-01 [PMID: 11250747] (ICC/IF, WB, Human)



### **Novus Biologicals USA**

10730 E. Briarwood Avenue  
Centennial, CO 80112  
USA  
Phone: 303.730.1950  
Toll Free: 1.888.506.6887  
Fax: 303.730.1966  
nb-customerservice@bio-techne.com

### **Bio-Techne Canada**

21 Canmotor Ave  
Toronto, ON M8Z 4E6  
Canada  
Phone: 905.827.6400  
Toll Free: 855.668.8722  
Fax: 905.827.6402  
canada.inquires@bio-techne.com

### **Bio-Techne Ltd**

19 Barton Lane  
Abingdon Science Park  
Abingdon, OX14 3NB, United Kingdom  
Phone: (44) (0) 1235 529449  
Free Phone: 0800 37 34 15  
Fax: (44) (0) 1235 533420  
info.EMEA@bio-techne.com

### **General Contact Information**

www.novusbio.com  
Technical Support: nb-technical@bio-techne.com  
Orders: nb-customerservice@bio-techne.com  
General: novus@novusbio.com

### **Products Related to NBP1-41185**

---

NBP2-33376H	Blue Marker Antibody (6F4-F6) [HRP]
HAF007	Goat anti-Mouse IgG Secondary Antibody [HRP]
NB7539	Goat anti-Mouse IgG (H+L) Secondary Antibody [HRP]
NBP1-97005-0.5mg	Mouse IgG1 Isotype Control (MG1)

---

### **Limitations**

This product is for research use only and is not approved for use in humans or in clinical diagnosis. Primary Antibodies are guaranteed for 1 year from date of receipt.

For more information on our 100% guarantee, please visit [www.novusbio.com/guarantee](http://www.novusbio.com/guarantee)

Earn gift cards/discounts by submitting a review: [www.novusbio.com/reviews/submit/NBP1-41185](http://www.novusbio.com/reviews/submit/NBP1-41185)

Earn gift cards/discounts by submitting a publication using this product:  
[www.novusbio.com/publications](http://www.novusbio.com/publications)

