

Product Datasheet

Sulfatase-2/SULF2 Antibody (2B4) - BSA Free NBP1-36727

Unit Size: 0.1 ml

Store at 4C short term. Aliquot and store at -20C long term. Avoid freeze-thaw cycles.

www.novusbio.com



technical@novusbio.com

Publications: 6

Protocols, Publications, Related Products, Reviews, Research Tools and Images at:
www.novusbio.com/NBP1-36727

Updated 9/9/2025 v.20.1

Earn rewards for product
reviews and publications.

Submit a publication at www.novusbio.com/publications

Submit a review at www.novusbio.com/reviews/destination/NBP1-36727



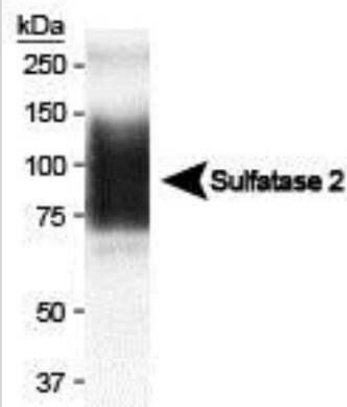
NBP1-36727

Sulfatase-2/SULF2 Antibody (2B4) - BSA Free

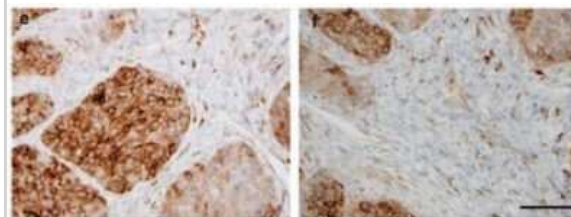
Product Information	
Unit Size	0.1 ml
Concentration	1 mg/ml
Storage	Store at 4C short term. Aliquot and store at -20C long term. Avoid freeze-thaw cycles.
Clonality	Monoclonal
Clone	2B4
Preservative	0.05% Sodium Azide
Isotype	IgG1
Purity	Protein G purified
Buffer	PBS
Product Description	
Description	Novus Biologicals Mouse Sulfatase-2/SULF2 Antibody (2B4) - BSA Free (NBP1-36727) is a monoclonal antibody validated for use in IHC, WB, ELISA, Flow and IP. Anti-Sulfatase-2/SULF2 Antibody: Cited in 6 publications. All Novus Biologicals antibodies are covered by our 100% guarantee.
Host	Mouse
Gene ID	55959
Gene Symbol	SULF2
Species	Human, Mouse
Specificity/Sensitivity	Does not recognize human or mouse Sulfatase 1 or other family members.
Immunogen	Partial recombinant human Sulfatase 2 isoform b [Accession# NP_940998].
Product Application Details	
Applications	Western Blot, Immunohistochemistry-Paraffin, ELISA, Flow Cytometry, Immunohistochemistry, Immunoprecipitation, CyTOF-ready
Recommended Dilutions	Western Blot 1:1000, Flow Cytometry reported by customer review on FITC-conjugated antibody., ELISA 1:100-1:2000, Immunohistochemistry 1:250-1:500, Immunoprecipitation 1:10-1:100, Immunohistochemistry-Paraffin 1:250-1:500, CyTOF-ready
Application Notes	For WB a band can be seen at 50 kDa. Other bands may be seen at 135 kDa (unprocessed protein) and 37 kDa (fragment of 50 kDa subunit). For ELISA, use this antibody at 1-10 ug/ml for capture and 1-5 ug/ml for detection. It has been reported that NBP1-36727 picks up a 130 kDa band that is not Sulfatase 2 in human plasma. Because of this we do not recommend NBP1-36727 for capture of the human protein. This antibody is CyTOF ready.

Images

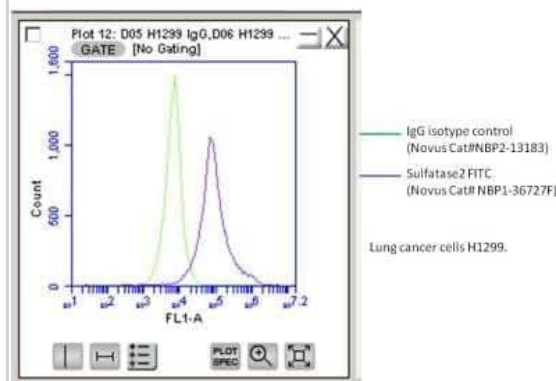
Western Blot: Sulfatase-2/SULF2 Antibody (2B4) [NBP1-36727] - Analysis showing Sulfatase 2 expression in MCF7 conditioned media (CM). In CM, the 75 kDa band is dominant (Tang R, Rosen SD. J Biol Chem. 2009 Aug 7;284(32):21505-14). Image courtesy of Mark Singer at UCSF.



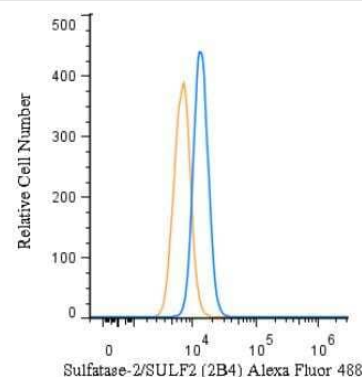
Immunohistochemistry-Paraffin: Sulfatase-2/SULF2 Antibody (2B4) [NBP1-36727] - Immunohistochemical analysis of Sulfatase 2 in non-small-cell lung carcinoma. (left) lung squamous cell carcinoma stained with 2B4 antibody and (right) tumor-associated stromal cells stained with 2B4 antibody. Image courtesy of Mark Singer at UCSF.



Flow Cytometry: Sulfatase-2/SULF2 Antibody (2B4) [NBP1-36727] - Analysis using the FITC conjugate of NBP1-36727. Staining of Human lung cancer line with Sulfatase2-FITC. Image from verified customer review.



Flow Cytometry: Sulfatase-2/SULF2 Antibody (2B4) [NBP1-36727] - An intracellular stain was performed on HeLa cells with Sulfatase-2/SULF2 Antibody (2B4) NBP1-36727AF488 and a matched isotype control (orange). Cells were fixed with 4% PFA and then permeabilized with 0.1% saponin. Cells were incubated in an antibody dilution of 10 ug/mL for 30 minutes at room temperature. Both antibodies were conjugated to Alexa Fluor 488.



Copyright © 2018 Novus Biologicals

Publications

Yue X. Epithelial Deletion of Sulf2 Exacerbates Bleomycin-induced Lung Injury, Inflammation and Mortality *Am. J. Respir. Cell Mol. Biol.* 2017-06-28 [PMID: 28657777] (IF/IHC, Mouse)

Zhu C, He L, Zhou X et al. Sulfatase 2 promotes breast cancer progression through regulating some tumor-related factors. *Oncology reports.* 2015-12-02 [PMID: 26708018] (WB, Human)

Details:

Sulf2 antibody used for WB on various breast cancer cell lines (MCF-7, MDA-MB-231, MDA-MB-468 and BT-549) and HBL-100 (mammary epithelial cell line) (Figure 1).

Solari V, Borriello L, Turcatel G et al. MYCN-dependent Expression of Sulfatase-2 Regulates Neuroblastoma Cell Survival *Cancer Res.* 2014-08-27 [PMID: 25164011]

Yue X, Lu J, Auduong L et al. Overexpression of Sulf2 in idiopathic pulmonary fibrosis. *Glycobiology* 2013-02-14 [PMID: 23418199] (WB, Human)

Lui NS, van Zante A, Rosen SD et al. SULF2 expression by immunohistochemistry and overall survival in oesophageal cancer: a cohort study *BMJ Open* 2012-11-23 [PMID: 23180455] (IF/IHC, Human)

Lemjabbar-Alaoui H, van Zante A, Singer MS, Xue Q, Wang YQ, Tsay D, He B, Jablons DM, Rosen SD. Sulf-2, a heparan sulfate endosulfatase, promotes human lung carcinogenesis. *Oncogene*;29(5):635-46. 2010-02-04 [PMID: 19855436] (WB, IHC-P, Human)



Procedures

Protocol specific for Sulfatase 2 Antibody (NBP1-36727)

Sulfatase-2/SULF2 Antibody (2B4):

Western Blot Protocol

1. Perform SDS-PAGE (4-12% MOPS) on samples to be analyzed, loading 25 ug of total protein per lane.
2. Transfer proteins to Nitrocellulose according to the instructions provided by the manufacturer of the transfer apparatus.
3. Rinse membrane with dH₂O and then stain the blot using Ponceau S for 1-2 minutes to access the transfer of proteins onto the nitrocellulose membrane. Rinse the blot in water to remove excess stain and mark the lane locations and locations of molecular weight markers using a pencil.
4. Rinse the blot in TBS for approximately 5 minutes.
5. Block the membrane using 5% NFD_M + 1% BSA in TBS + Tween, 1 hour at RT.
6. Rinse the membrane in dH₂O and then wash the membrane in wash buffer [TBS + 0.1% Tween] 3 times for 10 minutes each.
7. Dilute the anti-Sulfatase 2 primary antibody (NBP1-36727) in blocking buffer and incubate 1 hour at room temperature.
8. Rinse the membrane in dH₂O and then wash the membrane in wash buffer [TBS + 0.1% Tween] 3 times for 10 minutes each.
9. Apply the diluted mouse-IgG HRP-conjugated secondary antibody in blocking buffer (as per manufacturers instructions) and incubate 1 hour at room temperature.
10. Wash the blot in wash buffer [TBS + 0.1% Tween] 3 times for 10 minutes each (this step can be repeated as required to reduce background).
11. Apply the detection reagent of choice in accordance with the manufacturers instructions (Pierce ECL).

Note: Tween-20 can be added to the blocking or antibody dilution buffer at a final concentration of 0.05-0.2%, provided it does not interfere with antibody-antigen binding.





Novus Biologicals USA

10730 E. Briarwood Avenue
Centennial, CO 80112
USA
Phone: 303.730.1950
Toll Free: 1.888.506.6887
Fax: 303.730.1966
nb-customerservice@bio-techne.com

Bio-Techne Canada

21 Canmotor Ave
Toronto, ON M8Z 4E6
Canada
Phone: 905.827.6400
Toll Free: 855.668.8722
Fax: 905.827.6402
canada.inquires@bio-techne.com

Bio-Techne Ltd

19 Barton Lane
Abingdon Science Park
Abingdon, OX14 3NB, United Kingdom
Phone: (44) (0) 1235 529449
Free Phone: 0800 37 34 15
Fax: (44) (0) 1235 533420
info.EMEA@bio-techne.com

General Contact Information

www.novusbio.com
Technical Support: nb-technical@bio-techne.com
Orders: nb-customerservice@bio-techne.com
General: novus@novusbio.com

Products Related to NBP1-36727

NBP2-33376H	Blue Marker Antibody (6F4-F6) [HRP]
HAF007	Goat anti-Mouse IgG Secondary Antibody [HRP]
NB7539	Goat anti-Mouse IgG (H+L) Secondary Antibody [HRP]
NBP1-97005-0.5mg	Mouse IgG1 Isotype Control (MG1)

Limitations

This product is for research use only and is not approved for use in humans or in clinical diagnosis. Primary Antibodies are guaranteed for 1 year from date of receipt.

For more information on our 100% guarantee, please visit www.novusbio.com/guarantee

Earn gift cards/discounts by submitting a review: www.novusbio.com/reviews/submit/NBP1-36727

Earn gift cards/discounts by submitting a publication using this product:
www.novusbio.com/publications

