

Product Datasheet

Syntenin 1 Antibody - BSA Free NBP1-33661

Unit Size: 0.1 ml

Aliquot and store at -20C or -80C. Avoid freeze-thaw cycles.

www.novusbio.com



technical@novusbio.com

Publications: 3

Protocols, Publications, Related Products, Reviews, Research Tools and Images at:
www.novusbio.com/NBP1-33661

Updated 3/4/2026 v.20.1

Earn rewards for product
reviews and publications.

Submit a publication at www.novusbio.com/publications

Submit a review at www.novusbio.com/reviews/destination/NBP1-33661



NBP1-33661

Syntenin 1 Antibody - BSA Free

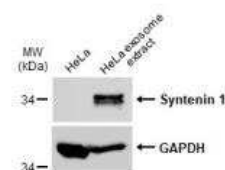
Product Information	
Unit Size	0.1 ml
Concentration	Concentrations vary lot to lot. See vial label for concentration. If unlisted please contact technical services.
Storage	Aliquot and store at -20C or -80C. Avoid freeze-thaw cycles.
Clonality	Polyclonal
Preservative	0.01% Thimerosal
Isotype	IgG
Purity	Antigen Affinity-purified
Buffer	0.1M Tris, 0.1M Glycine, 10% Glycerol
Target Molecular Weight	32 kDa

Product Description	
Host	Rabbit
Gene ID	6386
Gene Symbol	SDCBP
Species	Human, Mouse, Rat
Immunogen	Carrier-protein conjugated synthetic peptide encompassing a sequence within the C-terminus region of human Syntenin 1. The exact sequence is proprietary.

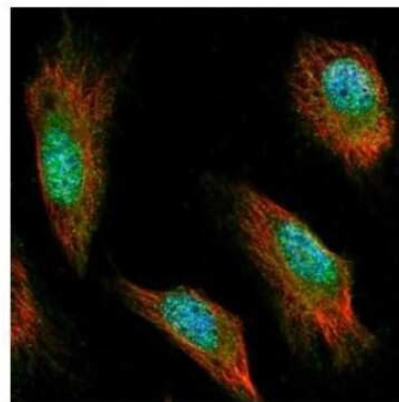
Product Application Details	
Applications	Western Blot, Immunohistochemistry-Paraffin, Immunocytochemistry/Immunofluorescence, Immunohistochemistry, Immunohistochemistry-Frozen
Recommended Dilutions	Western Blot 1:500-1:3000, Immunohistochemistry 1:100-1:1000, Immunocytochemistry/ Immunofluorescence 1:100-1:1000, Immunohistochemistry-Paraffin 1:100-1:1000, Immunohistochemistry-Frozen 1:100-1:1000

Images

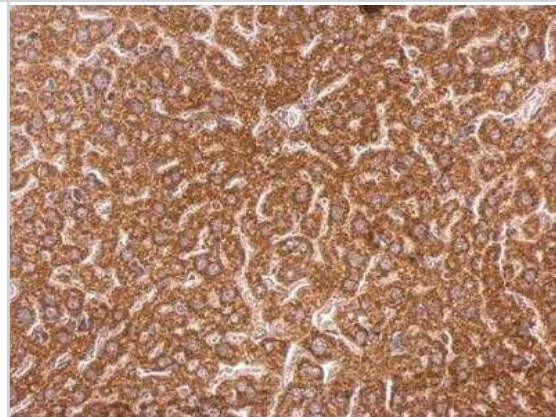
Western Blot: Syntenin 1 Antibody [NBP1-33661] - HeLa whole cell extracts and HeLa exosome extract (3.5 ug) were separated by 12% SDS-PAGE, and the membrane was blotted with Syntenin 1 antibody diluted at 1:250. HRP-conjugated anti-rabbit IgG antibody was used to detect the primary antibody.



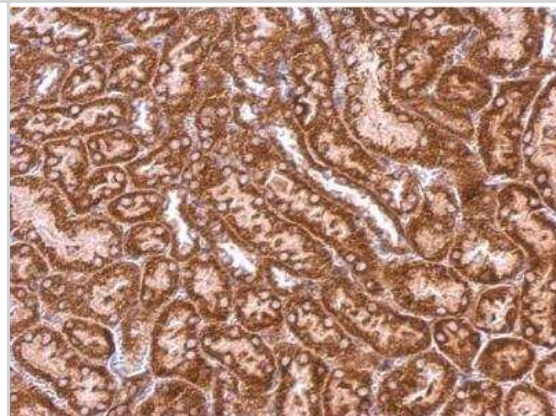
Immunocytochemistry/Immunofluorescence: Syntenin 1 Antibody [NBP1-33661] - Analysis of methanol-fixed HeLa, using Syntenin 1 antibody (Green) at 1:500 dilution. Alpha-tubulin filaments were labeled with an alpha Tubulin antibody (Red) at 1:2000.



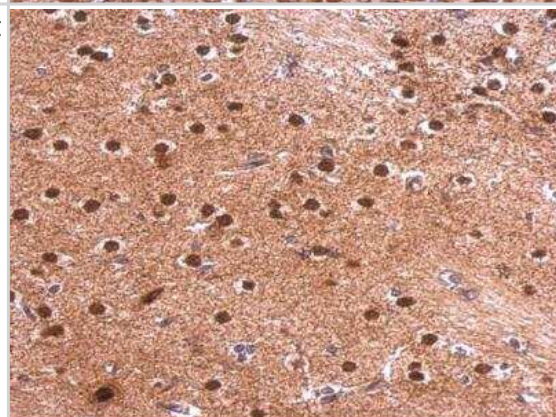
Immunohistochemistry-Paraffin: Syntenin 1 Antibody [NBP1-33661] - Mouse kidney. Syntenin 1 antibody [C2C3], C-term dilution: 1:500. Antigen Retrieval: Trilogy™ (EDTA based, pH 8.0) buffer, 15min.



Immunohistochemistry-Paraffin: Syntenin 1 Antibody [NBP1-33661] - Mouse kidney. Syntenin 1 antibody [C2C3], C-term dilution: 1:500. Antigen Retrieval: Trilogy™ (EDTA based, pH 8.0) buffer, 15min.



Immunohistochemistry-Paraffin: Syntenin 1 Antibody [NBP1-33661] - Rat fore brain. Syntenin 1 antibody [C2C3], C-term dilution: 1:500. Antigen Retrieval: Trilogy™ (EDTA based, pH 8.0) buffer, 15min.



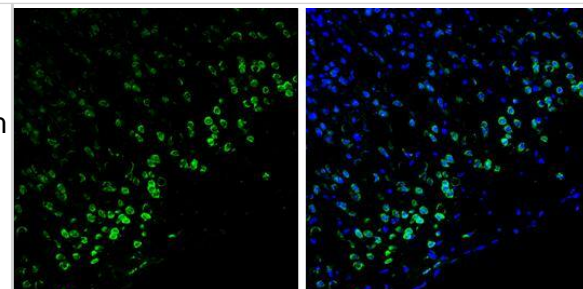
Syntenin 1 antibody [C2C3], C-term detects Syntenin 1 protein by immunohistochemical analysis.

Samples: Frozen Sectioned adult mouse brain.

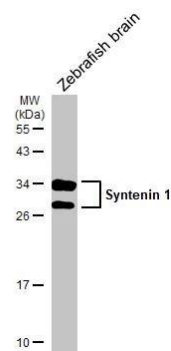
Green: Syntenin 1 protein stained by Syntenin 1 antibody [C2C3], C-term (NBP1-33661) diluted at 1:250.

Blue: Fluoroshield with DAPI .

br>Antigen Retrieval: Citrate buffer, pH 6.0, 10 min



Zebrafish tissue extract (30 ug) was separated by 12% SDS-PAGE, and the membrane was blotted with Syntenin 1 antibody [C2C3], C-term (NBP1-33661) diluted at 1:1000. The HRP-conjugated anti-rabbit IgG antibody was used to detect the primary antibody.



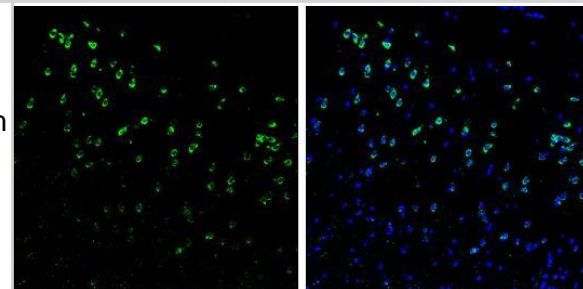
Syntenin 1 antibody [C2C3], C-term detects Syntenin 1 protein by immunohistochemical analysis.

Samples: Frozen Sectioned adult mouse brain.

Green: Syntenin 1 protein stained by Syntenin 1 antibody [C2C3], C-term (NBP1-33661) diluted at 1:250.

Blue: Fluoroshield with DAPI .

br>Antigen Retrieval: Citrate buffer, pH 6.0, 10 min



Publications

Turner NP, Abeysinghe P, Sadowski P, Mitchell MD Omics Analysis of Extracellular Vesicles Recovered from Infant Formula Products and Milk: Towards Personalized Infant Nutrition Molecular nutrition & food research 2023-08-10 [PMID: 37562982] (Western Blot, Bovine, Human)

Yiwei Ai, Chenxu Guo, Marta Garcia-Contreras, Laura S. Sánchez B., Andras Saftics, Oluwapelumi Shodubi, Shankar Raghunandan, Junhao Xu, Shang Jui Tsai, Yi Dong, Rong Li, Tijana Jovanovic-Talisman, Stephen J. Gould Endocytosis blocks the vesicular secretion of exosome marker proteins Science Advances 2024-05-10 [PMID: 38718108]

Turner N, Abeysinghe P, Sadowski P, Mitchell M Cross-species proteomic and microRNA comparison of extracellular vesicles in human milk, cow's milk, and infant formula products: moving towards next generation infant formula products bioRxiv 2023-02-24 (Western Blot, Bovine, Human)



Novus Biologicals USA

10730 E. Briarwood Avenue
Centennial, CO 80112
USA
Phone: 303.730.1950
Toll Free: 1.888.506.6887
Fax: 303.730.1966
nb-customerservice@bio-techne.com

Bio-Techne Canada

21 Canmotor Ave
Toronto, ON M8Z 4E6
Canada
Phone: 905.827.6400
Toll Free: 855.668.8722
Fax: 905.827.6402
canada.inquires@bio-techne.com

Bio-Techne Ltd

19 Barton Lane
Abingdon Science Park
Abingdon, OX14 3NB, United Kingdom
Phone: (44) (0) 1235 529449
Free Phone: 0800 37 34 15
Fax: (44) (0) 1235 533420
info.EMEA@bio-techne.com

General Contact Information

www.novusbio.com
Technical Support: nb-technical@bio-techne.com
Orders: nb-customerservice@bio-techne.com
General: novus@novusbio.com

Products Related to NBP1-33661

HAF008	Goat anti-Rabbit IgG Secondary Antibody [HRP]
NB7160	Goat anti-Rabbit IgG (H+L) Secondary Antibody [HRP]
NBP2-24891	Rabbit IgG Isotype Control
NBP1-50893-0.1mg	Recombinant Human Syntenin 1 His Protein

Limitations

This product is for research use only and is not approved for use in humans or in clinical diagnosis. Primary Antibodies are guaranteed for 1 year from date of receipt.

For more information on our 100% guarantee, please visit www.novusbio.com/guarantee

Earn gift cards/discounts by submitting a review: www.novusbio.com/reviews/submit/NBP1-33661

Earn gift cards/discounts by submitting a publication using this product:
www.novusbio.com/publications

