

Product Datasheet

SLC25A13 Antibody - BSA Free NBP1-33380

Unit Size: 0.1 ml

Aliquot and store at -20C or -80C. Avoid freeze-thaw cycles.

www.novusbio.com



technical@novusbio.com

Publications: 1

Protocols, Publications, Related Products, Reviews, Research Tools and Images at:
www.novusbio.com/NBP1-33380

Updated 9/9/2025 v.20.1

Earn rewards for product
reviews and publications.

Submit a publication at www.novusbio.com/publications

Submit a review at www.novusbio.com/reviews/destination/NBP1-33380



NBP1-33380

SLC25A13 Antibody - BSA Free

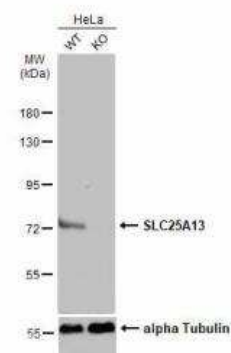
| Product Information | |
|-------------------------|--|
| Unit Size | 0.1 ml |
| Concentration | Concentrations vary lot to lot. See vial label for concentration. If unlisted please contact technical services. |
| Storage | Aliquot and store at -20C or -80C. Avoid freeze-thaw cycles. |
| Clonality | Polyclonal |
| Preservative | 0.025% Proclin 300 |
| Isotype | IgG |
| Purity | Antigen Affinity-purified |
| Buffer | PBS, 20% Glycerol |
| Target Molecular Weight | 74 kDa |

| Product Description | |
|---------------------|--|
| Description | Novus Biologicals Knockout (KO) Validated Rabbit SLC25A13 Antibody - BSA Free (NBP1-33380) is a polyclonal antibody validated for use in IHC, WB and ICC/IF. All Novus Biologicals antibodies are covered by our 100% guarantee. |
| Host | Rabbit |
| Gene ID | 10165 |
| Gene Symbol | SLC25A13 |
| Species | Human, Mouse, Rat |
| Reactivity Notes | Immunogen displays the following percentage of sequence identity for non-tested species: <i>Xenopus laevis</i> (89%). |
| Immunogen | Recombinant protein encompassing a sequence within the center region of human SLC25A13. The exact sequence is proprietary. |

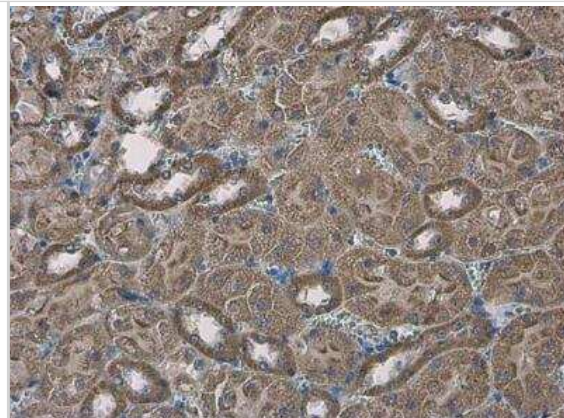
| Product Application Details | |
|-----------------------------|--|
| Applications | Western Blot, Immunohistochemistry-Paraffin, Immunocytochemistry/Immunofluorescence, Immunohistochemistry, Knockout Validated |
| Recommended Dilutions | Western Blot 1:500-1:3000, Immunohistochemistry 1:100-1:1000, Immunocytochemistry/ Immunofluorescence 1:100-1:1000, Immunohistochemistry-Paraffin 1:100-1:1000, Knockout Validated |

Images

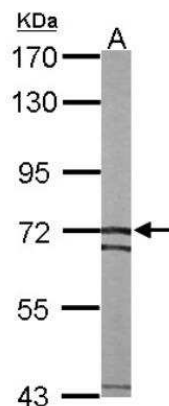
Western Blot: SLC25A13 Antibody [NBP1-33380] - Wild-type (WT) and SLC25A13 knockout (KO) HeLa cell extracts (30 ug) were separated by 7.5% SDS-PAGE, and the membrane was blotted with SLC25A13 antibody diluted at 1:3000. HRP-conjugated anti-rabbit IgG antibody was used to detect the primary antibody.



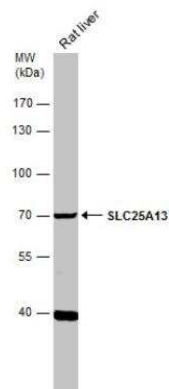
Immunohistochemistry-Paraffin: SLC25A13 Antibody [NBP1-33380] - Paraffin-embedded mouse kidney. SLC25A13 antibody [N3C2], Internal diluted at 1:500.



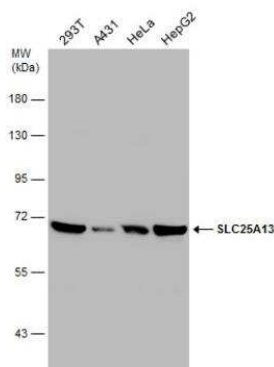
Western Blot: SLC25A13 Antibody [NBP1-33380] - Sample (50 ug of whole cell lysate) A: mouse liver 7.5% SDS PAGE; antibody diluted at 1:1000.



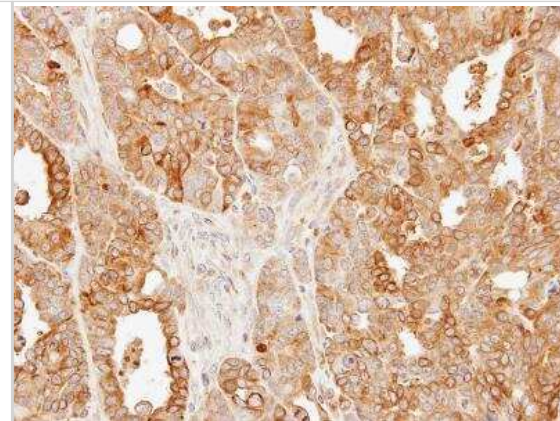
Western Blot: SLC25A13 Antibody [NBP1-33380] - Rat tissue extract (50 ug) was separated by 7.5% SDS-PAGE, and the membrane was blotted with SLC25A13 antibody [N3C2], Internal diluted at 1:500.



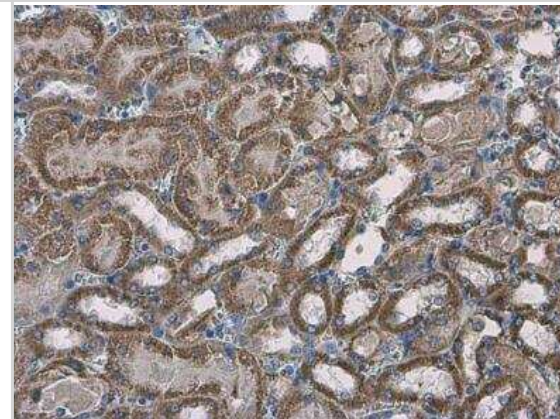
Western Blot: SLC25A13 Antibody [NBP1-33380] - Various whole cell extracts (30 ug) were separated by 7.5% SDS-PAGE, and the membrane was blotted with SLC25A13 antibody [N3C2], Internal diluted at 1:3000. The HRP-conjugated anti-rabbit IgG antibody (NBP2-19301) was used to detect the primary antibody.



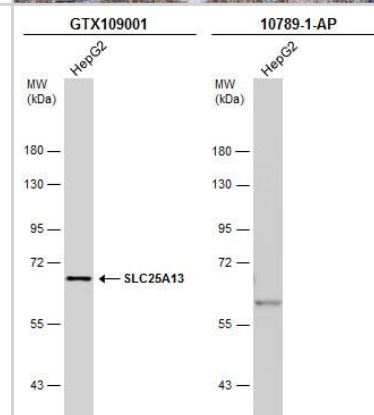
Immunohistochemistry-Paraffin: SLC25A13 Antibody [NBP1-33380] - Paraffin-embedded N87 xenograft, using antibody at 1:500 dilution.



Immunohistochemistry-Paraffin: SLC25A13 Antibody [NBP1-33380] - Paraffin-embedded mouse kidney. SLC25A13 antibody [N3C2], Internal diluted at 1:500.



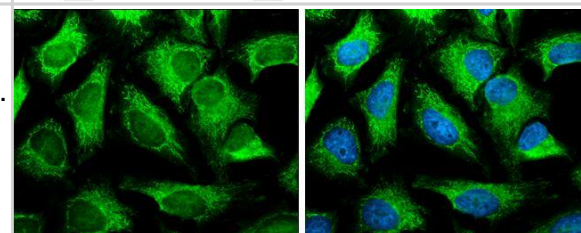
Whole cell extract (30 ug) was separated by 7.5% SDS-PAGE, and the membranes were blotted with SLC25A13 antibody [N3C2], Internal (NBP1-33380) diluted at 1:1000 and competitor's antibody (10789-1-AP) diluted at 1:1000. The HRP-conjugated anti-rabbit IgG antibody was used to detect the primary antibody.



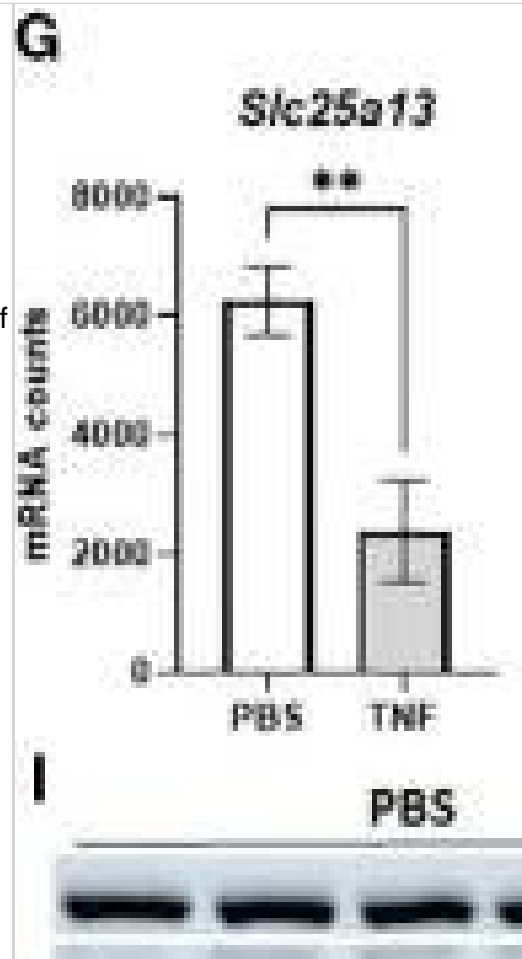
*The competitor is not affiliated with Novus and does not endorse this product.

SLC25A13 antibody [N3C2], Internal detects SLC25A13 protein at mitochondria by immunofluorescent analysis.
Sample: HeLa cells were fixed in 4% paraformaldehyde at RT for 15 min.

Green: SLC25A13 protein stained by SLC25A13 antibody [N3C2], Internal (NBP1-33380) diluted at 1:500.
Blue: Hoechst 33342 staining.



TNF impairs the malate aspartate shuttle leading to a NAD⁺ and NADH deficit. (A) Experimental setup for liver genome-wide transcriptomic analysis 18h after TNF (25 ug). (B) Enrichr pathway analysis (Elsevier pathway collection) of the downregulated genes 18h after TNF (1310 genes) with LFC < -1 and p < 0.05. (C) Schematic overview of the MAS and metabolic pathways depending on NAD⁺/NADH homeostasis. 1: GOT1; 2: MDH1; 3: OGC; 4: MDH2; 5: GOT2; 6: AGC; ETC: electron transport chain; OXPHOS: oxidative phosphorylation; αKG: alpha ketoglutarate. (D, E). Enrichr pathway analysis (Metabolomics Workbench metabolites 2022 (D) and GO cellular component 2023 (E) of the downregulated genes 18h after TNF (1310 genes) with LFC < -1 and p < 0.05. (F) Heatmap depicting the relative expression levels (%) of genes involved in the MAS 18h after TNF, with RNASeq mRNA counts from the PBS condition set at 100%. (G) mRNA counts of *Slc25a13* in livers of PBS- and TNF-treated mice. n=3/group. (H, I). Western blot analysis of SLC25A13 (74 kDa) protein levels in livers of PBS- and TNF-treated mice (35 ug), normalized to actin levels (42 kDa). n=3-5/group. (J, K). Liver NAD⁺(J) and NADH (K) levels in PBS- and TNF-injected mice (35 ug), relative to PBS controls. n=3-5/group. (L). Enrichr pathway analysis (TF-LOF expression from GEO) of the downregulated genes 18h after TNF (1310 genes) with LFC < -1 and p < 0.05. (M). HOMER motif analysis of the 1310 downregulated genes. (N). *Hnf4α*^{Liver-i-KO} and *Hnf4α*^{fl/fl} were IP injected with TNF (32,5 ug) and mortality was monitored. n=3-6/group. Bars: mean +/- SEM. Each dot represents a single biological replicate. P-values were analyzed with unpaired t-test (G, H, J, K). Survival was analyzed via a log rank test (N). **p ≤ 0.01, *p ≤ 0.05. Image collected and cropped by CiteAb from the following open publication (<https://pubmed.ncbi.nlm.nih.gov/41132685>), licensed under a CC-BY license. Not internally tested by Novus Biologicals.



Publications

Nuyttens L, Heyerick M, Roes M et al. A crucial role of the malate aspartate shuttle in metabolic reprogramming in TNF-induced SIRS *Frontiers in Immunology* 2025-10-08 [PMID: 41132685]



Novus Biologicals USA

10730 E. Briarwood Avenue
Centennial, CO 80112
USA
Phone: 303.730.1950
Toll Free: 1.888.506.6887
Fax: 303.730.1966
nb-customerservice@bio-techne.com

Bio-Techne Canada

21 Canmotor Ave
Toronto, ON M8Z 4E6
Canada
Phone: 905.827.6400
Toll Free: 855.668.8722
Fax: 905.827.6402
canada.inquires@bio-techne.com

Bio-Techne Ltd

19 Barton Lane
Abingdon Science Park
Abingdon, OX14 3NB, United Kingdom
Phone: (44) (0) 1235 529449
Free Phone: 0800 37 34 15
Fax: (44) (0) 1235 533420
info.EMEA@bio-techne.com

General Contact Information

www.novusbio.com
Technical Support: nb-technical@bio-techne.com
Orders: nb-customerservice@bio-techne.com
General: novus@novusbio.com

Products Related to NBP1-33380

| | |
|-------------|---|
| NBP2-33376H | Blue Marker Antibody (6F4-F6) [HRP] |
| HAF008 | Goat anti-Rabbit IgG Secondary Antibody [HRP] |
| NB7160 | Goat anti-Rabbit IgG (H+L) Secondary Antibody [HRP] |
| NBP2-24891 | Rabbit IgG Isotype Control |

Limitations

This product is for research use only and is not approved for use in humans or in clinical diagnosis. Primary Antibodies are guaranteed for 1 year from date of receipt.

For more information on our 100% guarantee, please visit www.novusbio.com/guarantee

Earn gift cards/discounts by submitting a review: www.novusbio.com/reviews/submit/NBP1-33380

Earn gift cards/discounts by submitting a publication using this product:
www.novusbio.com/publications

