

# Product Datasheet

## Staufen Antibody - BSA Free NBP1-33202

Unit Size: 0.1 ml

Aliquot and store at -20C or -80C. Avoid freeze-thaw cycles.

[www.novusbio.com](http://www.novusbio.com)



[technical@novusbio.com](mailto:technical@novusbio.com)

### Publications: 6

Protocols, Publications, Related Products, Reviews, Research Tools and Images at:  
[www.novusbio.com/NBP1-33202](http://www.novusbio.com/NBP1-33202)

Updated 9/9/2025 v.20.1

Earn rewards for product  
reviews and publications.

Submit a publication at [www.novusbio.com/publications](http://www.novusbio.com/publications)

Submit a review at [www.novusbio.com/reviews/destination/NBP1-33202](http://www.novusbio.com/reviews/destination/NBP1-33202)



**NBP1-33202**

Staufen Antibody - BSA Free

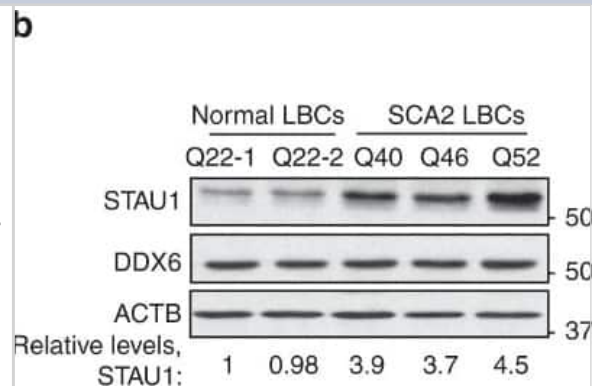
| Product Information            |  |
|--------------------------------|--|
| <b>Unit Size</b>               | 0.1 ml   |
| <b>Concentration</b>           | Concentrations vary lot to lot. See vial label for concentration. If unlisted please contact technical services. |
| <b>Storage</b>                 | Aliquot and store at -20C or -80C. Avoid freeze-thaw cycles.   |
| <b>Clonality</b>               | Polyclonal   |
| <b>Preservative</b>            | 0.025% Proclin 300   |
| <b>Isotype</b>                 | IgG  |
| <b>Purity</b>                  | Antigen Affinity-purified  |
| <b>Buffer</b>                  | PBS, 20% Glycerol  |
| <b>Target Molecular Weight</b> | 63 kDa   |

| Product Description     |  |
|-------------------------|--|
| <b>Description</b>      | Novus Biologicals Rabbit Staufen Antibody - BSA Free (NBP1-33202) is a polyclonal antibody validated for use in WB, ICC/IF and IP. Anti-Staufen Antibody: Cited in 6 publications. All Novus Biologicals antibodies are covered by our 100% guarantee. |
| <b>Host</b>             | Rabbit   |
| <b>Gene ID</b>          | 6780   |
| <b>Gene Symbol</b>      | STAU1  |
| <b>Species</b>          | Human, Mouse   |
| <b>Reactivity Notes</b> | Zebrafish (81%), Xenopus laevis (86%).   |
| <b>Immunogen</b>        | Recombinant protein encompassing a sequence within the C-terminus region of human Staufen. The exact sequence is proprietary.  |

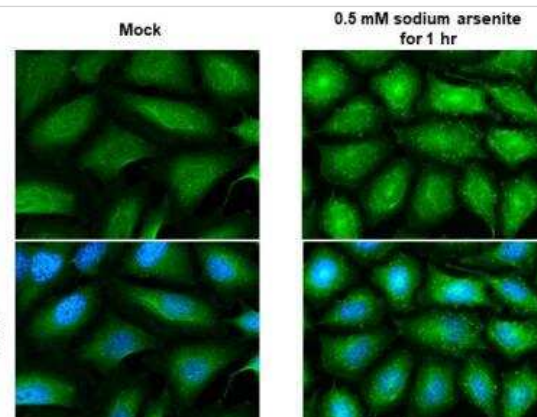
| Product Application Details  |   |
|------------------------------|---|
| <b>Applications</b>          | Western Blot, Immunocytochemistry/ Immunofluorescence, Immunoprecipitation  |
| <b>Recommended Dilutions</b> | Western Blot 1:500-1:3000, Immunocytochemistry/ Immunofluorescence 1:100-1:1000, Immunoprecipitation 1:500-1:3000 |

**Images**

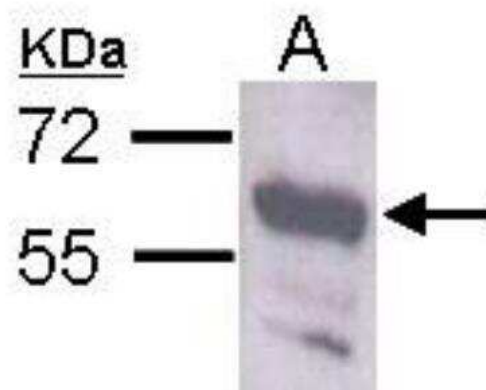
Western Blot: Staufen Antibody [NBP1-33202] - Western blot analysis of LBCs show increased Staufen (STAU1) (NBP1-33202) levels compared with normal controls. DDX6 (NB200-191) levels are unchanged. HD and SCA3 patient (polyQ expanded) FBs were used as additional controls. Four normal and five SCA2 FBs, and two normal and three SCA2 LBCs were used. Image collected and cropped by CiteAb from the following publication (<http://pubmed.ncbi.nlm.nih.gov/30194296/>) licensed under a CC-BY license.



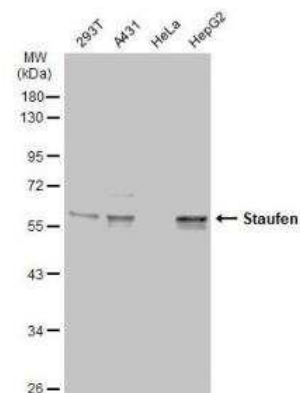
Immunocytochemistry/Immunofluorescence: Staufen Antibody [NBP1-33202] - Mock and treated HeLa cells were fixed in 4% paraformaldehyde at RT for 15 min. Green: Staufen stained by Staufen antibody diluted at 1:500. Blue: Fluoroshield with DAPI.



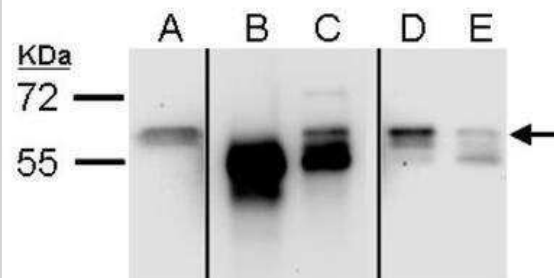
Western Blot: Staufen Antibody [NBP1-33202] - Sample (30 ug of whole cell lysate) A: Neuro2A diluted at 1:1000



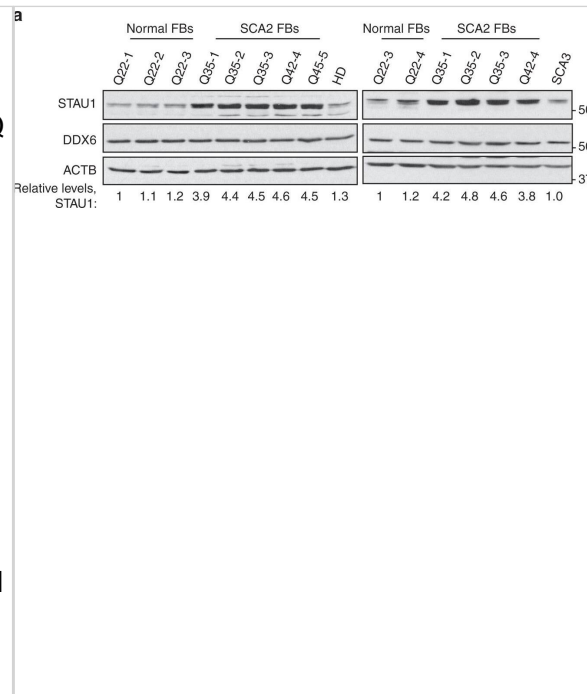
Western Blot: Staufen Antibody [NBP1-33202] - Various whole cell extracts (30 ug) were separated by 10% SDS-PAGE, and the membrane was blotted with Staufen antibody diluted at 1:5000. The HRP-conjugated anti-rabbit IgG antibody (NBP2-19301) was used to detect the primary antibody.



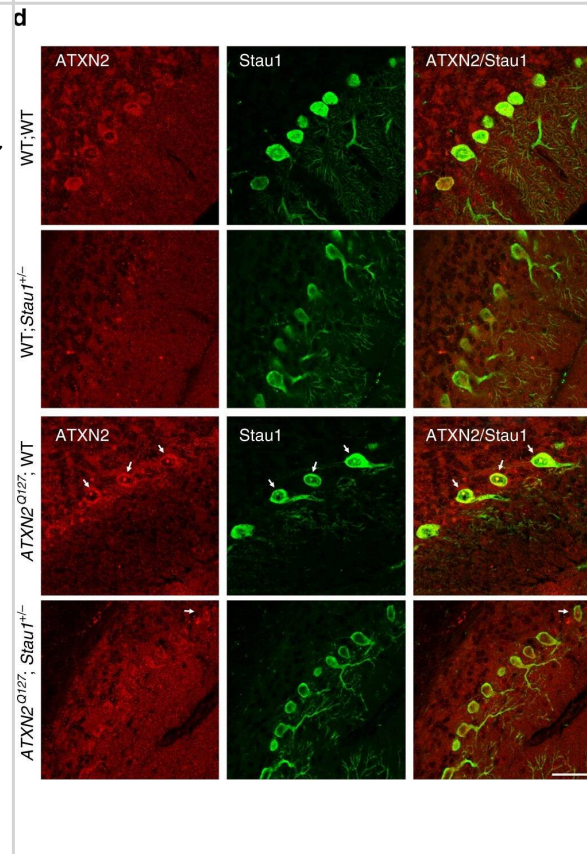
Immunoprecipitation: Staufen Antibody [NBP1-33202] - Staufen antibody staining 30 ug whole cell lysate of Lane A: 293 (input), Lane B: control rabbit IgG-IP, Lane C: Stau1-IP, Lane D: Post-IP lysate from control rabbit IgG-IP, Lane E: Post-IP lysate from Stau1-IP; diluted at 1:3000.



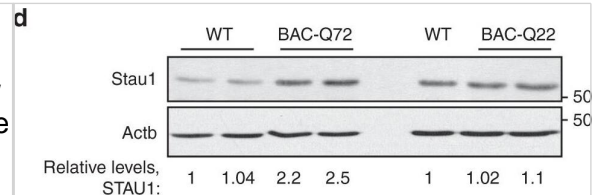
Staufen1 protein but not mRNA steady-state levels are increased in neurodegenerative disease cells & tissues. Western blot analysis of SCA2- FBs (a) & LBCs (b) show increased STAU1 levels compared with normal controls. DDX6 levels are unchanged. HD & SCA3 patient (polyQ expanded) FBs were used as additional controls. Four normal & five SCA2 FBs, & two normal & three SCA2 LBCs were used. c, d Western blot analyses of ATXN2Q127 (c) & BAC-Q72 (d) mouse cerebellar extracts (24 weeks of age) showing increased Stau1 levels compared with wild-type or BAC-Q22 controls (n = 2–3 animals per group). e Western blot of FB extracts from an ALS patient with the TDP-43G298S mutation show increased STAU1 levels.  $\beta$ -Actin was used as loading control & representative blots of three independent experiments are shown. f–h STAU1 RNA levels are unaltered in SCA2 & ALS cells & SCA2 mice. qRT-PCR analyses of STAU1 mRNA in SCA2 FBs & ALS FB with TDP-43G298S mutation (f) or SCA2 LBCs (g). h qRT-PCR analyses of cerebellar RNAs from ATXN2Q127 & BAC-Q72 mice compared to wild-type littermates (24 weeks of age; n = animals per group). Gene expression levels were normalized to Actb Image collected & cropped by CiteAb from the following publication (<https://pubmed.ncbi.nlm.nih.gov/30194296>), licensed under a CC-BY license. Not internally tested by Novus Biologicals.



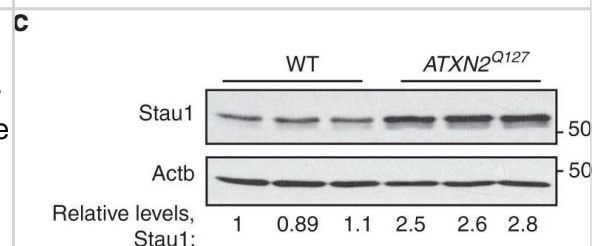
Western Blot: Staufen Antibody [NBP1-33202] - Silencing of STAU1 mitigates SCA2 phenotypes. a Stau1 haploinsufficiency improves abnormal motor behavior of ATXN2Q127 mice as determined by rotarod behavior at 8, 12, 16, & 20 weeks of age. ATXN2Q127;Stau1<sup>+/-</sup> mice (green) have improved rotarod performance compared with ATXN2Q127 littermates (red) starting at 12 weeks of age. Note that Stau1 haploinsufficiency (orange) by itself does not alter motor function; n = 9–15 mice per group. Values shown are mean  $\pm$  SE. Significance was determined using generalized estimating equations (GEE). NS, nonsignificant, \*P < 0.05, \*\*P < 0.01. b, c Reduction of Stau1 in vivo improves levels of key cerebellar proteins towards normalization. b Western blotting of cerebellar extracts from ATXN2Q127;Stau1<sup>+/-</sup> mice showing improvement of protein levels for Calb1, Pcp2, Rgs8, Pcp4, Homer3, & Fam107b towards normalization. Each lane represents cerebellar extract from an individual mouse.  $\beta$ -Actin is used as a loading control & the blots are from three replicate experiments. c Quantitative analysis of western blots shown in b. Data are mean  $\pm$  SD, \*\*P < 0.01, \*\*\*P < 0.001, Student t-test. d Combined immunostaining of ATXN2 (red) & Stau1 (green) of cerebellar sections from ATXN2Q127 & crossed ATXN2Q127;Stau1<sup>+/-</sup> mice (34 weeks of age) demonstrating reduced ATXN2-Stau1 aggregates in crossed ATXN2Q127;Stau1<sup>+/-</sup> mice. Scale bar, 30  $\mu$ M. e Model for STAU1 in the pathology of SCA2 & other neurodegenerative diseases Image collected & cropped by CiteAb from the following publication (<https://pubmed.ncbi.nlm.nih.gov/30194296>), licensed under a CC-BY license. Not internally tested by Novus Biologicals.



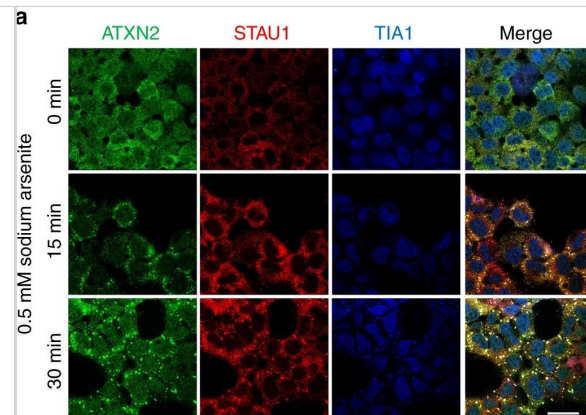
Western Blot: Staufen Antibody [NBP1-33202] - Staufen1 protein but not mRNA steady-state levels are increased in neurodegenerative disease cells & tissues. Western blot analysis of SCA2- FBs (a) & LBCs (b) show increased STAU1 levels compared with normal controls. DDX6 levels are unchanged. HD & SCA3 patient (polyQ expanded) FBs were used as additional controls. Four normal & five SCA2 FBs, & two normal & three SCA2 LBCs were used. c, d Western blot analyses of ATXN2Q127 (c) & BAC-Q72 (d) mouse cerebellar extracts (24 weeks of age) showing increased Stau1 levels compared with wild-type or BAC-Q22 controls (n = 2–3 animals per group). e Western blot of FB extracts from an ALS patient with the TDP-43G298S mutation show increased STAU1 levels.  $\beta$ -Actin was used as loading control & representative blots of three independent experiments are shown. f–h STAU1 RNA levels are unaltered in SCA2 & ALS cells & SCA2 mice. qRT-PCR analyses of STAU1 mRNA in SCA2 FBs & ALS FB with TDP-43G298S mutation (f) or SCA2 LBCs (g). h qRT-PCR analyses of cerebellar RNAs from ATXN2Q127 & BAC-Q72 mice compared to wild-type littermates (24 weeks of age; n = animals per group). Gene expression levels were normalized to Actb Image collected & cropped by CiteAb from the following publication (<https://pubmed.ncbi.nlm.nih.gov/30194296>), licensed under a CC-BY license. Not internally tested by Novus Biologicals.



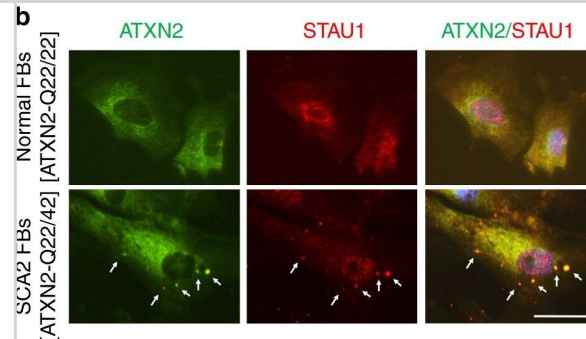
Western Blot: Staufen Antibody [NBP1-33202] - Staufen1 protein but not mRNA steady-state levels are increased in neurodegenerative disease cells & tissues. Western blot analysis of SCA2- FBs (a) & LBCs (b) show increased STAU1 levels compared with normal controls. DDX6 levels are unchanged. HD & SCA3 patient (polyQ expanded) FBs were used as additional controls. Four normal & five SCA2 FBs, & two normal & three SCA2 LBCs were used. c, d Western blot analyses of ATXN2Q127 (c) & BAC-Q72 (d) mouse cerebellar extracts (24 weeks of age) showing increased Stau1 levels compared with wild-type or BAC-Q22 controls (n = 2–3 animals per group). e Western blot of FB extracts from an ALS patient with the TDP-43G298S mutation show increased STAU1 levels.  $\beta$ -Actin was used as loading control & representative blots of three independent experiments are shown. f–h STAU1 RNA levels are unaltered in SCA2 & ALS cells & SCA2 mice. qRT-PCR analyses of STAU1 mRNA in SCA2 FBs & ALS FB with TDP-43G298S mutation (f) or SCA2 LBCs (g). h qRT-PCR analyses of cerebellar RNAs from ATXN2Q127 & BAC-Q72 mice compared to wild-type littermates (24 weeks of age; n = animals per group). Gene expression levels were normalized to Actb Image collected & cropped by CiteAb from the following publication (<https://pubmed.ncbi.nlm.nih.gov/30194296>), licensed under a CC-BY license. Not internally tested by Novus Biologicals.



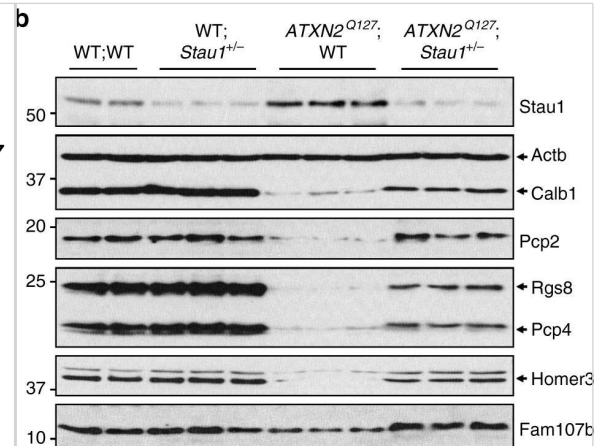
Western Blot: Staufen Antibody [NBP1-33202] - Co-localization of Staufen1 with ATXN2 in stress-granule-like structures. a ATXN2 & STAU1 co-localize in SGs. Immunostaining of HEK-293 cells with antibodies against ATXN2, STAU1, & TIA-1 show co-localization of STAU1 with ATXN2 & TIA-1 in SGs during stress (0.5 mM sodium arsenite for 15 & 30 min) that are not present in the absence of stress. Scale bar, 10  $\mu$ m. b Constitutively present SG-like structures positive for both ATXN2 & STAU1 in SCA2 FBs, but not in normal FBs (white arrows). Cells were stained with antibodies to ATXN2 & STAU1. Scale bar, 100  $\mu$ m. c Increased numbers of aggregates in SCA2 FBs at 37  $^{\circ}$ C. Aggregates > 4 pixels per cell positive for both ATXN2 & STAU1 are shown. One-hundred normal & 96 SCA2-FBs were used for analyses. Data are mean  $\pm$  SD, \*\*P < 0.01, Student t-test. d Histograms representing the quantities & sizes of ATXN2-STAU1 co-localized granules in normal vs. SCA2 FBs. e In vivo co-localization of ATXN2 (green) with Stau1 (red) to aggregates in cerebellar PCs of 24-weeks-old ATXN2Q127 mice (white arrows). Scale bar, 30  $\mu$ m. f Co-localized ATXN2 (red) & STAU1 (green) to aggregates (white arrows) in cerebellar PCs from a human SCA2 brain, that are absent in an unaffected control. Scale bar, 30  $\mu$ m. g Immunoprecipitation of ATXN2 with STAU1. Non-RNase A or RNase A treated HEK-293 cell extracts expressing Flag-tagged ATXN2-(Q22 or Q108) were subjected to immunoprecipitation with Flag mAb beads & analyzed by western blotting. STAU1 shows RNA-dependent interactions with wild-type & mutant ATXN2. ATXN2 also co-immunoprecipitates with DDX6 & PABPC1, known ATXN2 interactors. Representative blots of three independent experiments are shown Image collected & cropped by CiteAb from the following publication (<https://pubmed.ncbi.nlm.nih.gov/30194296>), licensed under a CC-BY license. Not internally tested by Novus Biologicals.



Western Blot: Staufen Antibody [NBP1-33202] - Co-localization of Staufen1 with ATXN2 in stress-granule-like structures. a ATXN2 & STAU1 co-localize in SGs. Immunostaining of HEK-293 cells with antibodies against ATXN2, STAU1, & TIA-1 show co-localization of STAU1 with ATXN2 & TIA-1 in SGs during stress (0.5 mM sodium arsenite for 15 & 30 min) that are not present in the absence of stress. Scale bar, 10  $\mu$ m. b Constitutively present SG-like structures positive for both ATXN2 & STAU1 in SCA2 FBs, but not in normal FBs (white arrows). Cells were stained with antibodies to ATXN2 & STAU1. Scale bar, 100  $\mu$ m. c Increased numbers of aggregates in SCA2 FBs at 37  $^{\circ}$ C. Aggregates > 4 pixels per cell positive for both ATXN2 & STAU1 are shown. One-hundred normal & 96 SCA2-FBs were used for analyses. Data are mean  $\pm$  SD, \*\*P < 0.01, Student t-test. d Histograms representing the quantities & sizes of ATXN2-STAU1 co-localized granules in normal vs. SCA2 FBs. e In vivo co-localization of ATXN2 (green) with Stau1 (red) to aggregates in cerebellar PCs of 24-weeks-old ATXN2Q127 mice (white arrows). Scale bar, 30  $\mu$ m. f Co-localized ATXN2 (red) & STAU1 (green) to aggregates (white arrows) in cerebellar PCs from a human SCA2 brain, that are absent in an unaffected control. Scale bar, 30  $\mu$ m. g Immunoprecipitation of ATXN2 with STAU1. Non-RNase A or RNase A treated HEK-293 cell extracts expressing Flag-tagged ATXN2-(Q22 or Q108) were subjected to immunoprecipitation with Flag mAb beads & analyzed by western blotting. STAU1 shows RNA-dependent interactions with wild-type & mutant ATXN2. ATXN2 also co-immunoprecipitates with DDX6 & PABPC1, known ATXN2 interactors. Representative blots of three independent experiments are shown Image collected & cropped by CiteAb from the following publication (<https://pubmed.ncbi.nlm.nih.gov/30194296>), licensed under a CC-BY license. Not internally tested by Novus Biologicals.



Western Blot: Staufen Antibody [NBP1-33202] - Silencing of STAU1 mitigates SCA2 phenotypes. a Stau1 haploinsufficiency improves abnormal motor behavior of ATXN2Q127 mice as determined by rotarod behavior at 8, 12, 16, & 20 weeks of age. ATXN2Q127;Stau1<sup>+/-</sup> mice (green) have improved rotarod performance compared with ATXN2Q127 littermates (red) starting at 12 weeks of age. Note that Stau1 haploinsufficiency (orange) by itself does not alter motor function; n = 9–15 mice per group. Values shown are mean ± SE. Significance was determined using generalized estimating equations (GEE). NS, nonsignificant, \*P < 0.05, \*\*P < 0.01. b, c Reduction of Stau1 in vivo improves levels of key cerebellar proteins towards normalization. b Western blotting of cerebellar extracts from ATXN2Q127;Stau1<sup>+/-</sup> mice showing improvement of protein levels for Calb1, Pcp2, Rgs8, Pcp4, Homer3, & Fam107b towards normalization. Each lane represents cerebellar extract from an individual mouse. β-Actin is used as a loading control & the blots are from three replicate experiments. c Quantitative analysis of western blots shown in b. Data are mean ± SD, \*\*P < 0.01, \*\*\*P < 0.001, Student t-test. d Combined immunostaining of ATXN2 (red) & Stau1 (green) of cerebellar sections from ATXN2Q127 & crossed ATXN2Q127;Stau1<sup>+/-</sup> mice (34 weeks of age) demonstrating reduced ATXN2-Stau1 aggregates in crossed ATXN2Q127;Stau1<sup>+/-</sup> mice. Scale bar, 30 μM. e Model for STAU1 in the pathology of SCA2 & other neurodegenerative diseases Image collected & cropped by CiteAb from the following publication (<https://pubmed.ncbi.nlm.nih.gov/30194296>), licensed under a CC-BY license. Not internally tested by Novus Biologicals.

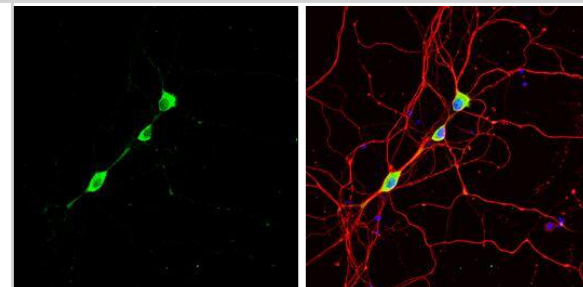


Western Blot: Staufen Antibody [NBP1-33202] - Staufen1 protein but not mRNA steady-state levels are increased in neurodegenerative disease cells & tissues. Western blot analysis of SCA2- FBs (a) & LBCs (b) show increased STAU1 levels compared with normal controls. DDX6 levels are unchanged. HD & SCA3 patient (polyQ expanded) FBs were used as additional controls. Four normal & five SCA2 FBs, & two normal & three SCA2 LBCs were used. c, d Western blot analyses of ATXN2Q127 (c) & BAC-Q72 (d) mouse cerebellar extracts (24 weeks of age) showing increased Stau1 levels compared with wild-type or BAC-Q22 controls (n = 2–3 animals per group). e Western blot of FB extracts from an ALS patient with the TDP-43G298S mutation show increased STAU1 levels. β-Actin was used as loading control & representative blots of three independent experiments are shown. f–h STAU1 RNA levels are unaltered in SCA2 & ALS cells & SCA2 mice. qRT-PCR analyses of STAU1 mRNA in SCA2 FBs & ALS FB with TDP-43G298S mutation (f) or SCA2 LBCs (g). h qRT-PCR analyses of cerebellar RNAs from ATXN2Q127 & BAC-Q72 mice compared to wild-type littermates (24 weeks of age; n = animals per group). Gene expression levels were normalized to Actb Image collected & cropped by CiteAb from the following publication (<https://pubmed.ncbi.nlm.nih.gov/30194296>), licensed under a CC-BY license. Not internally tested by Novus Biologicals.



Western Blot: Staufen Antibody [NBP1-33202] - Co-localization of Staufen1 with ATXN2 in stress-granule-like structures. a ATXN2 & STAU1 co-localize in SGs. Immunostaining of HEK-293 cells with antibodies against ATXN2, STAU1, & TIA-1 show co-localization of STAU1 with ATXN2 & TIA-1 in SGs during stress (0.5 mM sodium arsenite for 15 & 30 min) that are not present in the absence of stress. Scale bar, 10  $\mu$ M. b Constitutively present SG-like structures positive for both ATXN2 & STAU1 in SCA2 FBs, but not in normal FBs (white arrows). Cells were stained with antibodies to ATXN2 & STAU1. Scale bar, 100  $\mu$ M. c Increased numbers of aggregates in SCA2 FBs at 37  $^{\circ}$ C. Aggregates > 4 pixels per cell positive for both ATXN2 & STAU1 are shown. One-hundred normal & 96 SCA2-FBs were used for analyses. Data are mean  $\pm$  SD, \*\*P < 0.01, Student t-test. d Histograms representing the quantities & sizes of ATXN2-STAU1 co-localized granules in normal vs. SCA2 FBs. e In vivo co-localization of ATXN2 (green) with Stau1 (red) to aggregates in cerebellar PCs of 24-weeks-old ATXN2Q127 mice (white arrows). Scale bar, 30  $\mu$ M. f Co-localized ATXN2 (red) & STAU1 (green) to aggregates (white arrows) in cerebellar PCs from a human SCA2 brain, that are absent in an unaffected control. Scale bar, 30  $\mu$ M. g Immunoprecipitation of ATXN2 with STAU1. Non-RNase A or RNase A treated HEK-293 cell extracts expressing Flag-tagged ATXN2-(Q22 or Q108) were subjected to immunoprecipitation with Flag mAb beads & analyzed by western blotting. STAU1 shows RNA-dependent interactions with wild-type & mutant ATXN2. ATXN2 also co-immunoprecipitates with DDX6 & PABPC1, known ATXN2 interactors. Representative blots of three independent experiments are shown Image collected & cropped by CiteAb from the following publication (<https://pubmed.ncbi.nlm.nih.gov/30194296>), licensed under a CC-BY license. Not internally tested by Novus Biologicals.

Staufen antibody detects Staufen protein by immunofluorescent analysis. Sample: DIV9 rat E18 primary hippocampal neuron cells were fixed in 4% paraformaldehyde at RT for 15 min. Green: Staufen stained by Staufen antibody (NBP1-33202) diluted at 1:500. Red: beta Tubulin 3/ Tuj1, stained by beta Tubulin 3/ Tuj1 antibody [GT11710] diluted at 1:500. Blue: Fluoroshield with DAPI .



## Publications

Paul S, Dansithong W, Gandelman M et al. Staufen Impairs Autophagy in Neurodegeneration *Annals of Neurology* 2023-02-01 [PMID: 36151701] (Western Blot, Human)

Gandelman M, Dansithong W, Kales SC et al. The AKT modulator A-443654 reduces  $\tau$ -synuclein expression and normalizes ER stress and autophagy *Journal of Biological Chemistry* 2021-10-01 [PMID: 34520759] (Western Blot, Human)

Corbet GA, Burke JM, Bublitz GR, Parker R dsRNA-induced condensation of antiviral proteins promotes PKR activation *J Biol Chem* 2020-01-04 [PMID: 31896577]

Scoles DR, Gandelman M, Paul S et al. A quantitative high throughput screen identifies compounds that lower expression of the SCA2- and ALS-associated gene ATXN2 *The Journal of biological chemistry* 2022-07-01 [PMID: 35787375]

Paul S, Dansithong W, Figueroa KP et al. Staufen1 in human neurodegeneration *Annals of neurology* 2021-03-21 [PMID: 33745139]

Paul S, Dansithong W, Figueroa KP et al. Staufen1 links RNA stress granules and autophagy in a model of neurodegeneration. *Nat Commun* 2018-09-07 [PMID: 30194296] (WB, Human)





### **Novus Biologicals USA**

10730 E. Briarwood Avenue  
Centennial, CO 80112  
USA  
Phone: 303.730.1950  
Toll Free: 1.888.506.6887  
Fax: 303.730.1966  
nb-customerservice@bio-techne.com

### **Bio-Techne Canada**

21 Canmotor Ave  
Toronto, ON M8Z 4E6  
Canada  
Phone: 905.827.6400  
Toll Free: 855.668.8722  
Fax: 905.827.6402  
canada.inquires@bio-techne.com

### **Bio-Techne Ltd**

19 Barton Lane  
Abingdon Science Park  
Abingdon, OX14 3NB, United Kingdom  
Phone: (44) (0) 1235 529449  
Free Phone: 0800 37 34 15  
Fax: (44) (0) 1235 533420  
info.EMEA@bio-techne.com

### **General Contact Information**

www.novusbio.com  
Technical Support: nb-technical@bio-techne.com  
Orders: nb-customerservice@bio-techne.com  
General: novus@novusbio.com

### **Products Related to NBP1-33202**

---

|             |   |
|-------------|---|
| NBP2-33376H | Blue Marker Antibody (6F4-F6) [HRP]                 |
| HAF008      | Goat anti-Rabbit IgG Secondary Antibody [HRP]       |
| NB7160      | Goat anti-Rabbit IgG (H+L) Secondary Antibody [HRP] |
| NBP2-24891  | Rabbit IgG Isotype Control                          |

---

### **Limitations**

This product is for research use only and is not approved for use in humans or in clinical diagnosis. Primary Antibodies are guaranteed for 1 year from date of receipt.

For more information on our 100% guarantee, please visit [www.novusbio.com/guarantee](http://www.novusbio.com/guarantee)

Earn gift cards/discounts by submitting a review: [www.novusbio.com/reviews/submit/NBP1-33202](http://www.novusbio.com/reviews/submit/NBP1-33202)

Earn gift cards/discounts by submitting a publication using this product:  
[www.novusbio.com/publications](http://www.novusbio.com/publications)

