

Product Datasheet

MTHFD2 Antibody NBP1-33200

Unit Size: 0.1 ml

Aliquot and store at -20C or -80C. Avoid freeze-thaw cycles.

www.novusbio.com



technical@novusbio.com

Publications: 2

Protocols, Publications, Related Products, Reviews, Research Tools and Images at:
www.novusbio.com/NBP1-33200

Updated 9/25/2025 v.20.1

Earn rewards for product
reviews and publications.

Submit a publication at www.novusbio.com/publications

Submit a review at www.novusbio.com/reviews/destination/NBP1-33200



NBP1-33200

MTHFD2 Antibody

Product Information	
Unit Size	0.1 ml
Concentration	Concentrations vary lot to lot. See vial label for concentration. If unlisted please contact technical services.
Storage	Aliquot and store at -20C or -80C. Avoid freeze-thaw cycles.
Clonality	Polyclonal
Preservative	0.025% Proclin 300
Isotype	IgG
Purity	Antigen Affinity-purified
Buffer	PBS, 1% BSA, 20% Glycerol
Target Molecular Weight	38 kDa

Product Description	
Description	Novus Biologicals Rabbit MTHFD2 Antibody (NBP1-33200) is a polyclonal antibody validated for use in IHC, WB, ICC/IF and IP. Anti-MTHFD2 Antibody: Cited in 2 publications. All Novus Biologicals antibodies are covered by our 100% guarantee.
Host	Rabbit
Gene ID	10797
Gene Symbol	MTHFD2
Species	Human
Reactivity Notes	Zebrafish (86%), Xenopus laevis (90%).
Immunogen	Recombinant protein encompassing a sequence within the center region of human MTHFD2. The exact sequence is proprietary.

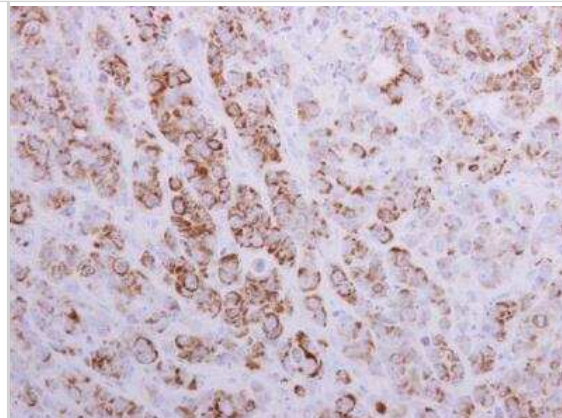
Product Application Details	
Applications	Western Blot, Immunohistochemistry-Paraffin, Immunocytochemistry/Immunofluorescence, Immunohistochemistry, Immunoprecipitation
Recommended Dilutions	Western Blot 1:500-1:3000, Immunohistochemistry 1:100-1:1000, Immunocytochemistry/ Immunofluorescence 1:100-1:1000, Immunoprecipitation 1:100-1:500, Immunohistochemistry-Paraffin 1:100-1:1000

Images

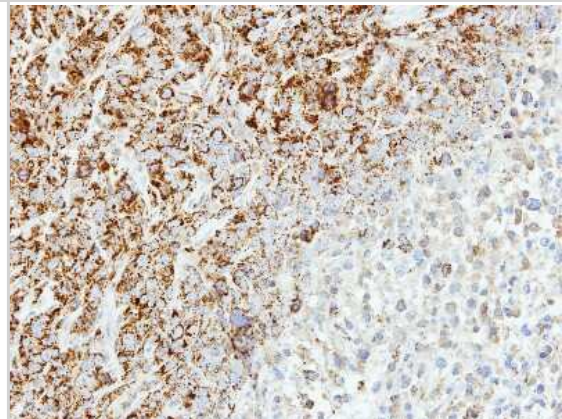
Immunocytochemistry/Immunofluorescence: MTHFD2 Antibody [NBP1-33200] - HeLa cells were fixed in 4% paraformaldehyde at RT for 15 min. Green: MTHFD2 stained by MTHFD2 antibody [N1C3] diluted at 1:500. Blue: Fluoroshield with DAPI.



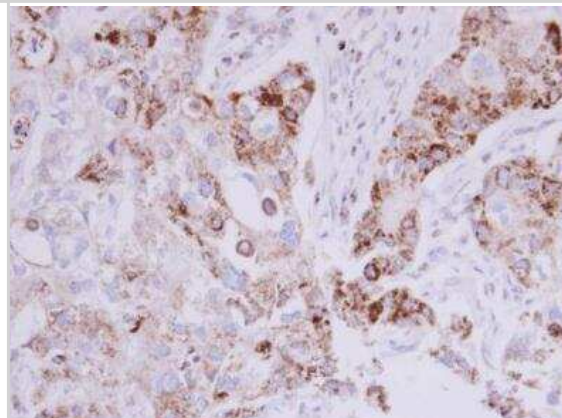
Immunohistochemistry-Paraffin: MTHFD2 Antibody [NBP1-33200] - Paraffin-embedded human MCF7 xenograft. MTHFD2 antibody [N1C3] diluted at 1:500.



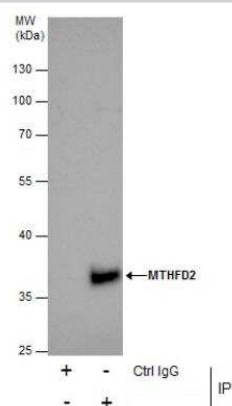
Immunohistochemistry-Paraffin: MTHFD2 Antibody [NBP1-33200] - Paraffin-embedded SAS xenograft, using antibody at 1:500 dilution.



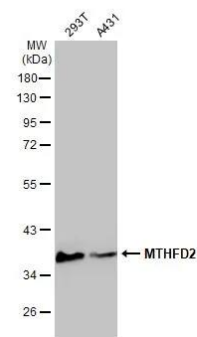
Immunohistochemistry-Paraffin: MTHFD2 Antibody [NBP1-33200] - Paraffin-embedded human breast carcinoma diluted at 1:500.



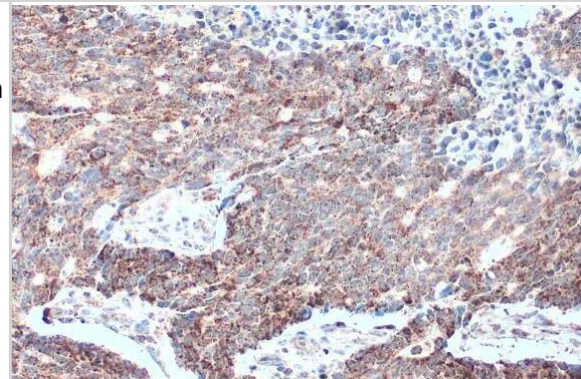
Immunoprecipitation: MTHFD2 Antibody [NBP1-33200] - Immunoprecipitation of MTHFD2 protein from 293T whole cell extracts using 5 ug of MTHFD2 antibody [N1C3] Western blot analysis was performed using MTHFD2 antibody [N1C3]. EasyBlot anti-Rabbit IgG was used as a secondary reagent.



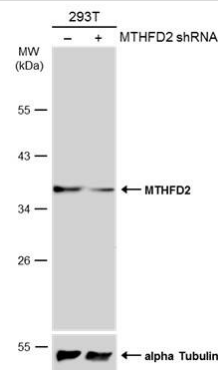
Western Blot: MTHFD2 Antibody [NBP1-33200] - Various whole cell extracts (30 ug) were separated by 10% SDS-PAGE, and the membrane was blotted with MTHFD2 antibody [N1C3] (NBP1-33200) diluted at 1:1000. The HRP-conjugated anti-rabbit IgG antibody was used to detect the primary antibody.



Immunohistochemistry-Paraffin: MTHFD2 Antibody [NBP1-33200] - MTHFD2 antibody [N1C3] detects MTHFD2 protein at mitochondria by immunohistochemical analysis. Sample: Paraffin-embedded human colon cancer. MTHFD2 stained by MTHFD2 antibody [N1C3] (NBP1-33200) diluted at 1:500. Antigen Retrieval: Citrate buffer, pH 6.0, 15 min



Western Blot: MTHFD2 Antibody [NBP1-33200] - Non-transfected (-) and transfected (+) 293T whole cell extracts (30 ug) were separated by 10% SDS-PAGE, and the membrane was blotted with MTHFD2 antibody [N1C3] diluted at 1:3000. The HRP-conjugated anti-rabbit IgG antibody was used to detect the primary antibody.



Publications

Wang W, Gu W, Tang H et al. The Emerging Role of MTHFD Family Genes in Regulating the Tumor Immunity of Oral Squamous Cell Carcinoma Journal of oncology 2022-06-03 [PMID: 35693982] (IF/IHC)

Moran DM, Trusk PB, Pry KJ et al. KRAS mutation status is associated with enhanced dependency on folate metabolism pathways in Non Small Cell Lung Cancer cells. Mol. Cancer Ther. 2014-03-31 [PMID: 24688052] (IHC-P, Human)



Novus Biologicals USA

10730 E. Briarwood Avenue
Centennial, CO 80112
USA
Phone: 303.730.1950
Toll Free: 1.888.506.6887
Fax: 303.730.1966
nb-customerservice@bio-techne.com

Bio-Techne Canada

21 Canmotor Ave
Toronto, ON M8Z 4E6
Canada
Phone: 905.827.6400
Toll Free: 855.668.8722
Fax: 905.827.6402
canada.inquires@bio-techne.com

Bio-Techne Ltd

19 Barton Lane
Abingdon Science Park
Abingdon, OX14 3NB, United Kingdom
Phone: (44) (0) 1235 529449
Free Phone: 0800 37 34 15
Fax: (44) (0) 1235 533420
info.EMEA@bio-techne.com

General Contact Information

www.novusbio.com
Technical Support: nb-technical@bio-techne.com
Orders: nb-customerservice@bio-techne.com
General: novus@novusbio.com

Products Related to NBP1-33200

NBP2-33376H	Blue Marker Antibody (6F4-F6) [HRP]
HAF008	Goat anti-Rabbit IgG Secondary Antibody [HRP]
NB7160	Goat anti-Rabbit IgG (H+L) Secondary Antibody [HRP]
NBP2-24891	Rabbit IgG Isotype Control

Limitations

This product is for research use only and is not approved for use in humans or in clinical diagnosis. Primary Antibodies are guaranteed for 1 year from date of receipt.

For more information on our 100% guarantee, please visit www.novusbio.com/guarantee

Earn gift cards/discounts by submitting a review: www.novusbio.com/reviews/submit/NBP1-33200

Earn gift cards/discounts by submitting a publication using this product:
www.novusbio.com/publications

