

# Product Datasheet

## RPSA Antibody NBP1-33002

Unit Size: 0.1 ml

Aliquot and store at -20C or -80C. Avoid freeze-thaw cycles.

[www.novusbio.com](http://www.novusbio.com)



[technical@novusbio.com](mailto:technical@novusbio.com)

### Publications: 2

Protocols, Publications, Related Products, Reviews, Research Tools and Images at:  
[www.novusbio.com/NBP1-33002](http://www.novusbio.com/NBP1-33002)

Updated 9/9/2025 v.20.1

Earn rewards for product  
reviews and publications.

Submit a publication at [www.novusbio.com/publications](http://www.novusbio.com/publications)

Submit a review at [www.novusbio.com/reviews/destination/NBP1-33002](http://www.novusbio.com/reviews/destination/NBP1-33002)



**NBP1-33002**

RPSA Antibody

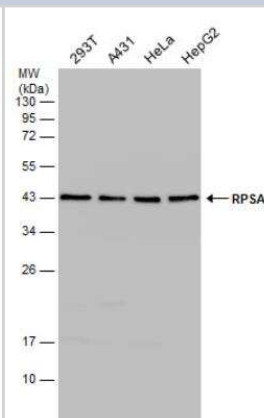
| Product Information     |  |
|-------------------------|--|
| Unit Size               | 0.1 ml   |
| Concentration           | Concentrations vary lot to lot. See vial label for concentration. If unlisted please contact technical services. |
| Storage                 | Aliquot and store at -20C or -80C. Avoid freeze-thaw cycles.   |
| Clonality               | Polyclonal   |
| Preservative            | 0.025% Proclin 300   |
| Isotype                 | IgG  |
| Purity                  | Antigen Affinity-purified  |
| Buffer                  | PBS, 1% BSA, 20% Glycerol  |
| Target Molecular Weight | 33 kDa   |

| Product Description |  |
|---------------------|--|
| Description         | Novus Biologicals Rabbit RPSA Antibody (NBP1-33002) is a polyclonal antibody validated for use in IHC and WB. Anti-RPSA Antibody: Cited in 2 publications. All Novus Biologicals antibodies are covered by our 100% guarantee. |
| Host                | Rabbit   |
| Gene ID             | 3921   |
| Gene Symbol         | RPSA   |
| Species             | Human, Mouse   |
| Reactivity Notes    | Xenopus laevis (95%).  |
| Immunogen           | Recombinant protein encompassing a sequence within the center region of human RPSA. The exact sequence is proprietary.   |

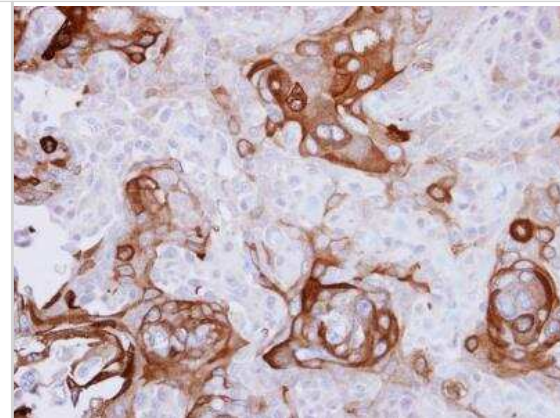
| Product Application Details |  |
|-----------------------------|--|
| Applications                | Western Blot, Immunohistochemistry-Paraffin, Immunohistochemistry  |
| Recommended Dilutions       | Western Blot 1:500-1:3000, Immunohistochemistry 1:100-1:1000, Immunohistochemistry-Paraffin 1:100-1:1000 |

**Images**

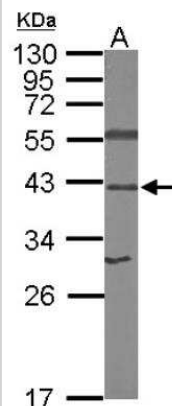
Western Blot: RPSA Antibody [NBP1-33002] - Various whole cell extracts (30 ug) were separated by 12% SDS-PAGE, and the membrane was blotted with RPSA antibody diluted at 1:1000.



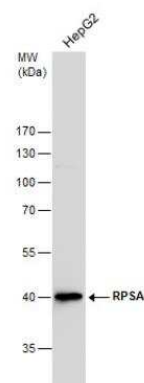
Immunohistochemistry-Paraffin: RPSA Antibody [NBP1-33002] - CA922 xenograft, using RPSA antibody at 1:500 dilution. Antigen Retrieval: Trilogy™ (EDTA based, pH 8.0) buffer, 15min.



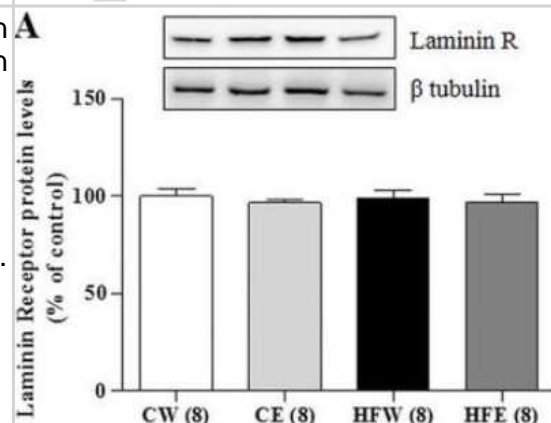
Western Blot: RPSA Antibody [NBP1-33002] - Sample (50 ug of whole cell lysate) A: mouse brain 12% SDS PAGE; antibody diluted at 1:1000.



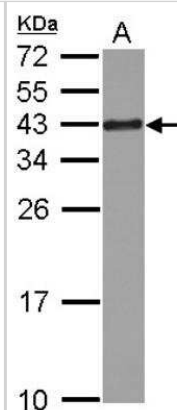
Western Blot: RPSA Antibody [NBP1-33002] - Whole cell extracts (30 ug) was separated by 10 % SDS-PAGE, and blotted with RPSA antibody diluted by 1:1000



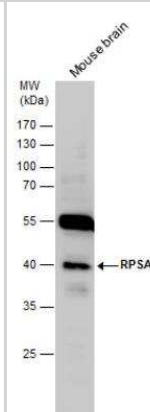
Western Blot: RPSA Antibody [NBP1-33002] - Liver protein expression in different experimental groups of Laminin R, AdipoR2 and SIRT1. Western Blotting analysis of protein expression in the liver on different experimental groups of aminin Receptor. Image shows demonstrative bands of the analyzed proteins and respective housekeeping protein (beta-tubulin) in liver. Data are expressed in mean +/- s.e.m. \* $p < 0.05$  Control diet and EGCG (CE) group versus Control diet and Water (CW) group. # $p < 0.05$  High-fat diet and EGCG (HFE) group versus HFW group. \$ $p < 0.05$  HFW versus CW. Image collected and cropped by CiteAb from the following publication (<https://dx.plos.org/10.1371/journal.pone.0141227>), licensed under a CC-BY license.



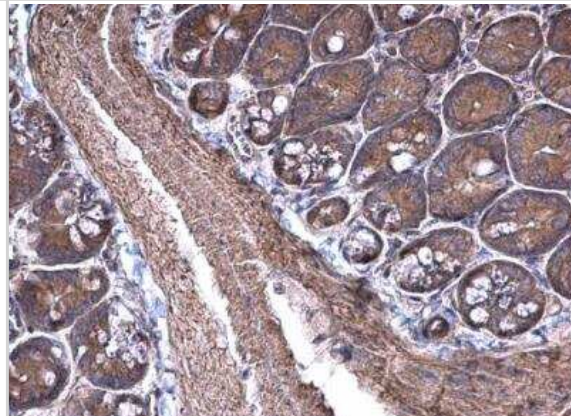
Western Blot: RPSA Antibody [NBP1-33002] - Sample (30 ug of whole cell lysate). A: Jurkat. 12% SDS PAGE. RPSA Antibody diluted at 1:1000



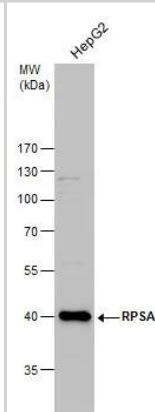
Western Blot: RPSA Antibody [NBP1-33002] - RPSA antibody detects RPSA protein by Western blot analysis. Mouse tissue extracts (50 ug) was separated by 10 % SDS-PAGE, and the membrane was blotted with RPSA antibody diluted by 1:1000.



Immunohistochemistry-Paraffin: RPSA Antibody [NBP1-33002] - Mouse small intestine. RPSA antibody [N1C3] diluted at 1:500. Antigen Retrieval: Trilogy™ (EDTA based, pH 8.0) buffer, 15min.



Western Blot: RPSA Antibody [NBP1-33002] - RPSA antibody detects RPSA protein by Western blot analysis. Whole cell extracts (30 ug) was separated by 10 % SDS-PAGE, and blotted with RPSA antibody (NBP1-33002) diluted by 1:1000



## Publications

Santamarina AB, Oliveira JL, Silva FP et al. Green Tea Extract Rich in Epigallocatechin-3-Gallate Prevents Fatty Liver by AMPK Activation via LKB1 in Mice Fed a High-Fat Diet. PLoS ONE. 2015-11-05 [PMID: 26536464] (WB, Mouse)

Song T, Choi CH, Cho YJ et al. Expression of 67-kDa laminin receptor was associated with tumor progression and poor prognosis in epithelial ovarian cancer. Gynecologic Oncology. 2012-01-28 [PMID: 22285843]





### **Novus Biologicals USA**

10730 E. Briarwood Avenue  
Centennial, CO 80112  
USA  
Phone: 303.730.1950  
Toll Free: 1.888.506.6887  
Fax: 303.730.1966  
nb-customerservice@bio-techne.com

### **Bio-Techne Canada**

21 Canmotor Ave  
Toronto, ON M8Z 4E6  
Canada  
Phone: 905.827.6400  
Toll Free: 855.668.8722  
Fax: 905.827.6402  
canada.inquires@bio-techne.com

### **Bio-Techne Ltd**

19 Barton Lane  
Abingdon Science Park  
Abingdon, OX14 3NB, United Kingdom  
Phone: (44) (0) 1235 529449  
Free Phone: 0800 37 34 15  
Fax: (44) (0) 1235 533420  
info.EMEA@bio-techne.com

### **General Contact Information**

www.novusbio.com  
Technical Support: nb-technical@bio-techne.com  
Orders: nb-customerservice@bio-techne.com  
General: novus@novusbio.com

### **Products Related to NBP1-33002**

---

|             |   |
|-------------|---|
| NBP2-33376H | Blue Marker Antibody (6F4-F6) [HRP]                 |
| HAF008      | Goat anti-Rabbit IgG Secondary Antibody [HRP]       |
| NB7160      | Goat anti-Rabbit IgG (H+L) Secondary Antibody [HRP] |
| NBP2-24891  | Rabbit IgG Isotype Control                          |

---

### **Limitations**

This product is for research use only and is not approved for use in humans or in clinical diagnosis. Primary Antibodies are guaranteed for 1 year from date of receipt.

For more information on our 100% guarantee, please visit [www.novusbio.com/guarantee](http://www.novusbio.com/guarantee)

Earn gift cards/discounts by submitting a review: [www.novusbio.com/reviews/submit/NBP1-33002](http://www.novusbio.com/reviews/submit/NBP1-33002)

Earn gift cards/discounts by submitting a publication using this product:  
[www.novusbio.com/publications](http://www.novusbio.com/publications)

