

Product Datasheet

GLDC Antibody NBP1-32907

Unit Size: 100 ul

Aliquot and store at -20C or -80C. Avoid freeze-thaw cycles.

www.novusbio.com



technical@novusbio.com

Protocols, Publications, Related Products, Reviews, Research Tools and Images at:
www.novusbio.com/NBP1-32907

Updated 9/25/2025 v.20.1

Earn rewards for product
reviews and publications.

Submit a publication at www.novusbio.com/publications

Submit a review at www.novusbio.com/reviews/destination/NBP1-32907



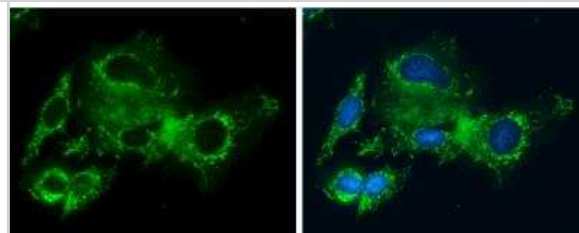
NBP1-32907

GLDC Antibody

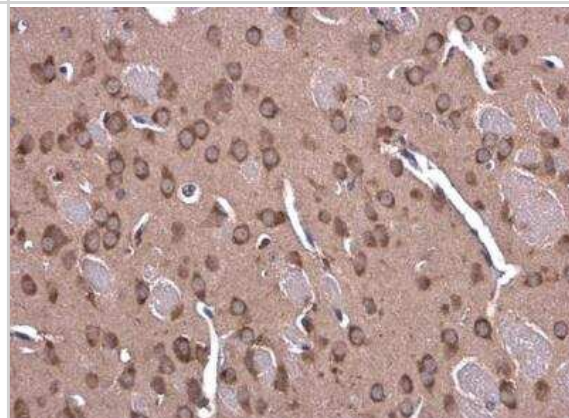
Product Information	
Unit Size	100 ul
Concentration	Concentrations vary lot to lot. See vial label for concentration. If unlisted please contact technical services.
Storage	Aliquot and store at -20C or -80C. Avoid freeze-thaw cycles.
Clonality	Polyclonal
Preservative	0.025% Proclin 300
Isotype	IgG
Purity	Antigen Affinity-purified
Buffer	PBS, 1% BSA, 20% Glycerol
Target Molecular Weight	113 kDa
Product Description	
Description	Novus Biologicals Rabbit GLDC Antibody (NBP1-32907) is a polyclonal antibody validated for use in IHC, WB, ICC/IF, Simple Western and IP. All Novus Biologicals antibodies are covered by our 100% guarantee.
Host	Rabbit
Gene ID	2731
Gene Symbol	GLDC
Species	Human, Mouse, Rat
Reactivity Notes	Chicken (85%), Xenopus laevis (86%).
Immunogen	Recombinant protein encompassing a sequence within the center region of human GLDC. The exact sequence is proprietary.
Product Application Details	
Applications	Western Blot, Simple Western, Immunohistochemistry-Paraffin, Immunocytochemistry/ Immunofluorescence, Immunohistochemistry, Immunoprecipitation
Recommended Dilutions	Western Blot 1:500-1:3000, Simple Western 1:200, Immunohistochemistry 1:100-1:1000, Immunocytochemistry/ Immunofluorescence 1:100-1:1000, Immunoprecipitation 1:100-1:500, Immunohistochemistry-Paraffin 1:100-1:1000
Application Notes	In Simple Western only 10 - 15 uL of the recommended dilution is used per data point. See Simple Western Antibody Database for Simple Western validation: Tested in HepG2 lysate 0.2 mg/mL, separated by Size, antibody dilution of 1:200, apparent MW was 111 kDa.

Images

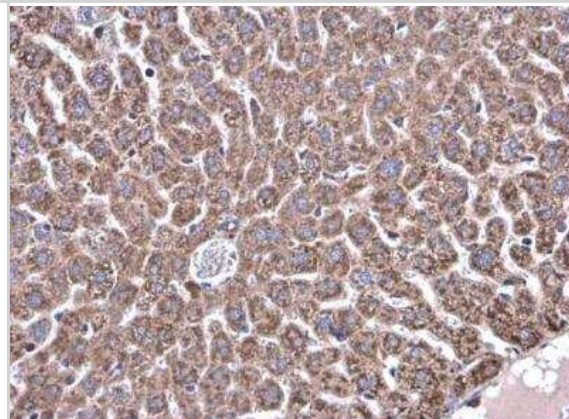
Immunocytochemistry/Immunofluorescence: GLDC Antibody [NBP1-32907] - Hep G2 cells were fixed in ice-cold MeOH for 5 min. Green: Glycine dehydrogenase protein stained by Glycine dehydrogenase antibody [N3C2-2], Internal diluted at 1:400. Blue: Hoechst 33342 staining.



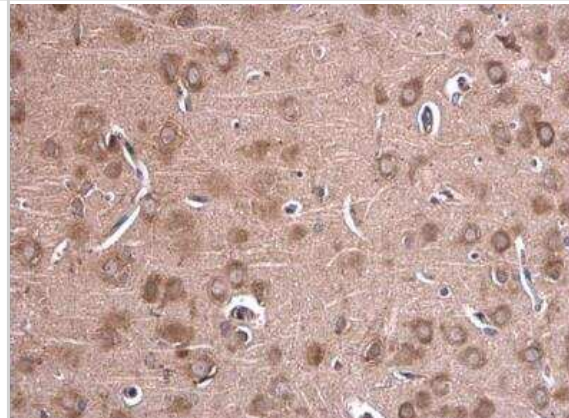
Immunohistochemistry-Paraffin: GLDC Antibody [NBP1-32907] - Paraffin-embedded mouse brain. Glycine dehydrogenase antibody [N3C2-2], Internal diluted at 1:500.



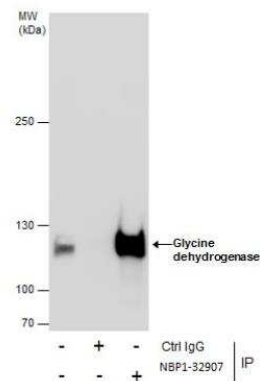
Immunohistochemistry-Paraffin: GLDC Antibody [NBP1-32907] - Paraffin-embedded mouse liver. Glycine dehydrogenase antibody [N3C2-2], Internal diluted at 1:500.



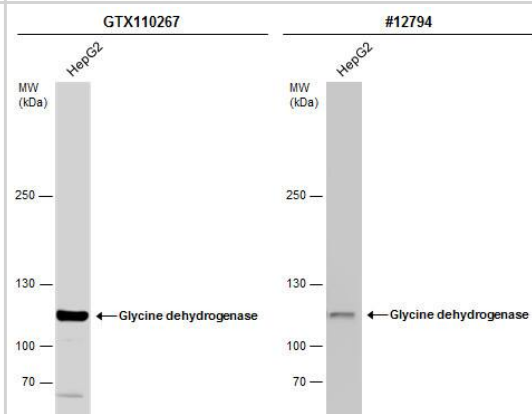
Immunohistochemistry-Paraffin: GLDC Antibody [NBP1-32907] - Paraffin-embedded rat brain. Glycine dehydrogenase antibody [N3C2-2], Internal diluted at 1:500



Immunoprecipitation: GLDC Antibody [NBP1-32907] -
 Immunoprecipitation of Glycine dehydrogenase protein from HepG2 whole cell extracts using 5 ug of Glycine dehydrogenase antibody [N3C2-2], Internal. Western blot analysis was performed using Glycine dehydrogenase antibody [N3C2-2], Internal. EasyBlot anti-Rabbit IgG (was used as a secondary reagent).



Whole cell extract (30 ug) was separated by 5% SDS-PAGE, and the membranes were blotted with Glycine dehydrogenase antibody [N3C2-2], Internal (NBP1-32907) diluted at 1:1000 and competitor's antibody (CST#12794) diluted at 1:1000. The HRP-conjugated anti-rabbit IgG antibody was used to detect the primary antibody.





Novus Biologicals USA

10730 E. Briarwood Avenue
Centennial, CO 80112
USA
Phone: 303.730.1950
Toll Free: 1.888.506.6887
Fax: 303.730.1966
nb-customerservice@bio-techne.com

Bio-Techne Canada

21 Canmotor Ave
Toronto, ON M8Z 4E6
Canada
Phone: 905.827.6400
Toll Free: 855.668.8722
Fax: 905.827.6402
canada.inquires@bio-techne.com

Bio-Techne Ltd

19 Barton Lane
Abingdon Science Park
Abingdon, OX14 3NB, United Kingdom
Phone: (44) (0) 1235 529449
Free Phone: 0800 37 34 15
Fax: (44) (0) 1235 533420
info.EMEA@bio-techne.com

General Contact Information

www.novusbio.com
Technical Support: nb-technical@bio-techne.com
Orders: nb-customerservice@bio-techne.com
General: novus@novusbio.com

Products Related to NBP1-32907

NBP2-33376H	Blue Marker Antibody (6F4-F6) [HRP]
HAF008	Goat anti-Rabbit IgG Secondary Antibody [HRP]
NB7160	Goat anti-Rabbit IgG (H+L) Secondary Antibody [HRP]
NBP2-24891	Rabbit IgG Isotype Control

Limitations

This product is for research use only and is not approved for use in humans or in clinical diagnosis. Primary Antibodies are guaranteed for 1 year from date of receipt.

For more information on our 100% guarantee, please visit www.novusbio.com/guarantee

Earn gift cards/discounts by submitting a review: www.novusbio.com/reviews/submit/NBP1-32907

Earn gift cards/discounts by submitting a publication using this product:
www.novusbio.com/publications

