

Product Datasheet

ATRX Antibody NBP1-32851

Unit Size: 0.1 ml

Aliquot and store at -20C or -80C. Avoid freeze-thaw cycles.

www.novusbio.com



technical@novusbio.com

Publications: 4

Protocols, Publications, Related Products, Reviews, Research Tools and Images at:
www.novusbio.com/NBP1-32851

Updated 9/9/2025 v.20.1

Earn rewards for product
reviews and publications.

Submit a publication at www.novusbio.com/publications

Submit a review at www.novusbio.com/reviews/destination/NBP1-32851



NBP1-32851

ATRX Antibody

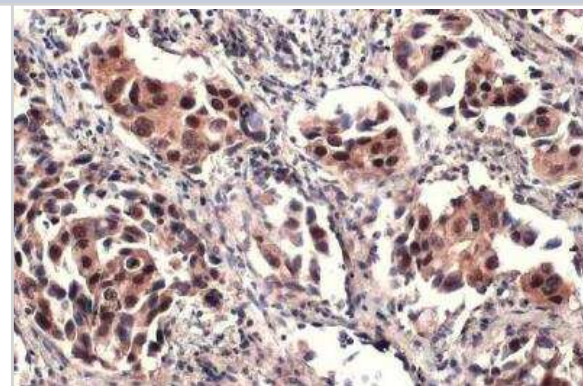
Product Information	
Unit Size	0.1 ml
Concentration	Concentrations vary lot to lot. See vial label for concentration. If unlisted please contact technical services.
Storage	Aliquot and store at -20C or -80C. Avoid freeze-thaw cycles.
Clonality	Polyclonal
Preservative	0.025% Proclin 300
Isotype	IgG
Purity	Antigen Affinity-purified
Buffer	PBS, 1% BSA, 20% Glycerol
Target Molecular Weight	283 kDa

Product Description	
Description	Novus Biologicals Rabbit ATRX Antibody (NBP1-32851) is a polyclonal antibody validated for use in IHC, WB, ICC/IF and IP. Anti-ATRX Antibody: Cited in 4 publications. All Novus Biologicals antibodies are covered by our 100% guarantee.
Host	Rabbit
Gene ID	546
Gene Symbol	ATRX
Species	Human, Mouse, Rat
Immunogen	Recombinant protein encompassing a sequence within the C-terminus region of human ATRX. The exact sequence is proprietary.

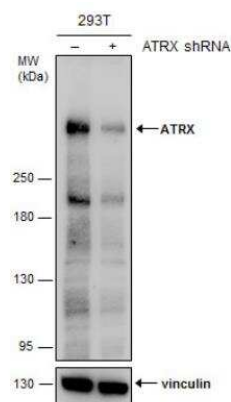
Product Application Details	
Applications	Western Blot, Immunohistochemistry-Paraffin, Immunocytochemistry/Immunofluorescence, Immunohistochemistry, Immunoprecipitation
Recommended Dilutions	Western Blot 1:500-1:3000, Immunohistochemistry 1:100-1:1000, Immunocytochemistry/ Immunofluorescence 1:100-1:1000, Immunoprecipitation 1:100-1:500, Immunohistochemistry-Paraffin 1:100-1:1000

Images

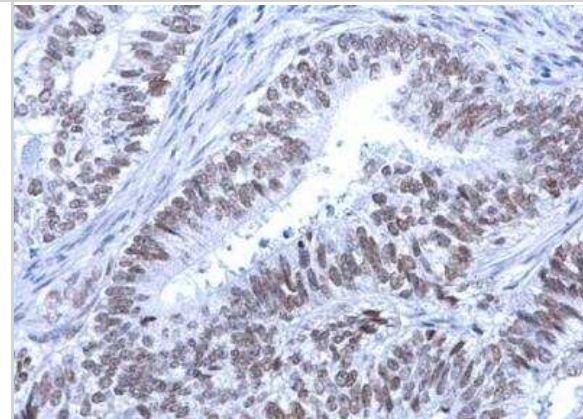
Immunohistochemistry-Paraffin: ATRX Antibody [NBP1-32851] - Human lung cancer. ATRX stained by ATRX antibody [C3], C-term diluted at 1:2500. Antigen Retrieval: Citrate buffer, pH 6.0, 15 min.



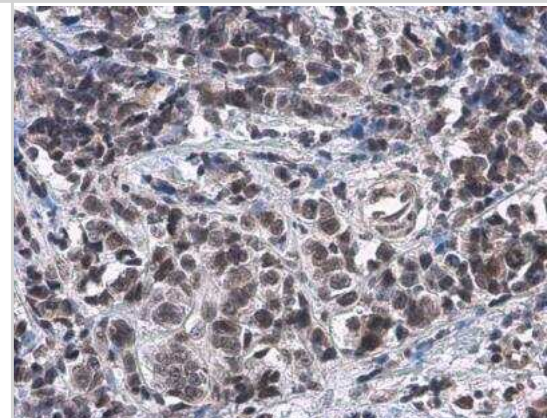
Western Blot: ATRX Antibody [NBP1-32851] - Non-transfected (-) and transfected (+) 293T whole cell extracts (30 ug) were separated by 5% SDS-PAGE, and the membrane was blotted with ATRX antibody [C3], C-term.



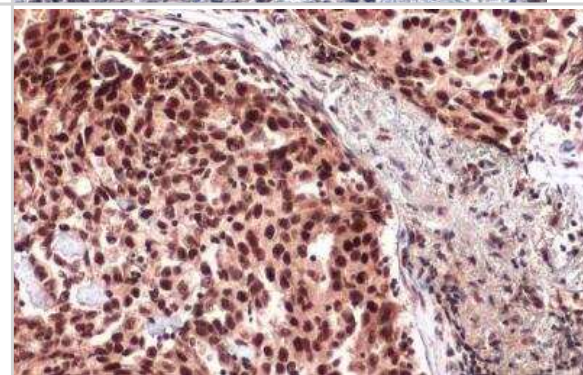
Immunohistochemistry-Paraffin: ATRX Antibody [NBP1-32851] - Human endometrial carcinoma. Rad54 antibody [C3], C-term dilution: 1:500.



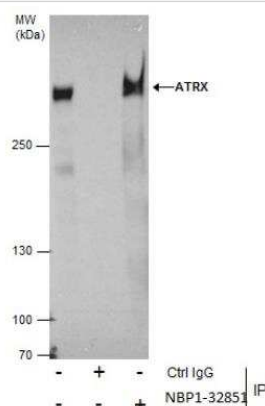
Immunohistochemistry-Paraffin: ATRX Antibody [NBP1-32851] - Human breast carcinoma. ATRX stained by ATRX antibody [C3], C-term diluted at 1:2000. Antigen Retrieval: Citrate buffer, pH 6.0, 15 min.



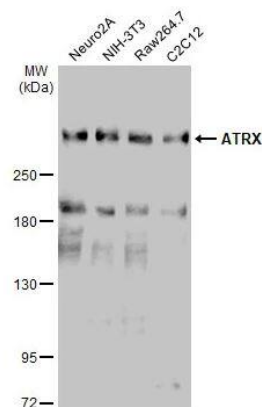
Immunohistochemistry-Paraffin: ATRX Antibody [NBP1-32851] - Human lung cancer. ATRX stained by ATRX antibody [C3], C-term diluted at 1:500. Antigen Retrieval: Citrate buffer, pH 6.0, 15 min.



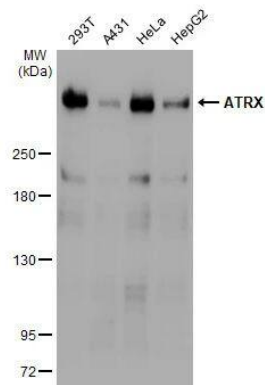
Immunoprecipitation: ATRX Antibody [NBP1-32851] -
 Immunoprecipitation of ATRX protein from 293T whole cell extracts using 5 ug of ATRX antibody [C3], C-term (NBP1-32851). Western blot analysis was performed using ATRX antibody [C3], C-term (NBP1-32851). EasyBlot anti-Rabbit IgG was used as a secondary reagent.



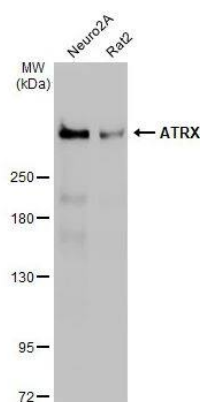
Western Blot: ATRX Antibody [NBP1-32851] - Various whole cell extracts (30 ug) were separated by 5% SDS-PAGE, and the membrane was blotted with ATRX antibody [C3], C-term diluted at 1:1000. The HRP-conjugated anti-rabbit IgG antibody (NBP2-19301) was used to detect the primary antibody.



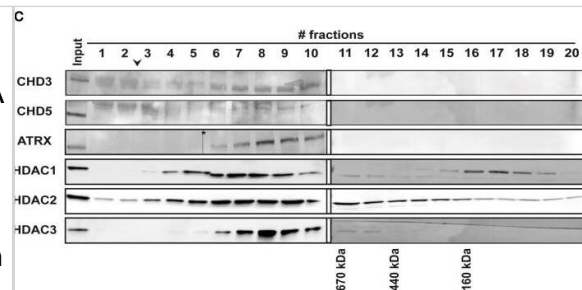
Western Blot: ATRX Antibody [NBP1-32851] - Various whole cell extracts (30 ug) were separated by 5% SDS-PAGE, and the membrane was blotted with ATRX antibody [C3], C-term diluted at 1:1000. The HRP-conjugated anti-rabbit IgG antibody (NBP2-19301) was used to detect the primary antibody.



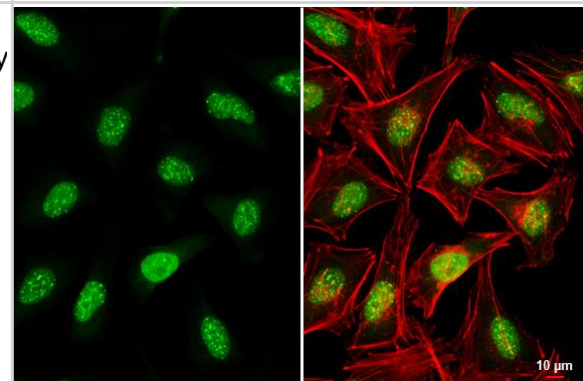
Western Blot: ATRX Antibody [NBP1-32851] - Various whole cell extracts (30 ug) were separated by 5% SDS-PAGE, and the membrane was blotted with ATRX antibody [C3], C-term diluted at 1:1000. The HRP-conjugated anti-rabbit IgG antibody (NBP2-19301) was used to detect the primary antibody.



Western Blot: ATRX Antibody [NBP1-32851] - mRNA expression & protein complex formation of various ChRFs in the brain & in embryonic stem cells (ESCs). (A) Schematic of regions that were assessed for RNA levels of several ChRFs: Bs, brain stem; Ce, cerebellum; Mb, midbrain; Hth, hypothalamus; Hc, Th, S, hippocampus/thalamus/septum; Ctx, cortex; & Ob, olfactory bulb. (B) ChRFs fall into two large expression groups (I + II) in the brain. RT-qPCR results were expressed as Δ CT values (reference gene: Gapdh) which were then centered at the median & subjected to hierarchical clustering. Red color indicates high expression (negative Δ CT value) & green color indicates low expression (positive Δ CT value). (C) Superose 6 size exclusion chromatography of ChRF peak fractions after anion exchange chromatography followed by immunoblot analysis of CHD3, CHD5, & ATRX as well as HDAC1, 2, & 3. The arrowhead indicates the void volume of the column, the asterisk marks a scanning artifact. Molecular masses of defined marker proteins are indicated at the bottom of their corresponding elution fractions. Image collected & cropped by CiteAb from the following publication (<http://journal.frontiersin.org/Article/10.3389/fnbeh.2015.00313/abstract>), licensed under a CC-BY license. Not internally tested by Novus Biologicals.



Immunocytochemistry/ Immunofluorescence: ATRX Antibody [NBP1-32851] - ATRX antibody [C3], C-term detects ATRX protein at nucleus by immunofluorescent analysis. Sample: HeLa cells were fixed in 4% paraformaldehyde at RT for 15 min. Green: ATRX stained by ATRX antibody [C3], C-term (NBP1-32851) diluted at 1:1000. Red: phalloidin, a cytoskeleton marker, diluted at 1:200. Scale bar= 10 μ m.



Publications

Yu S, Wei S, Savani M et al. A Modified Nucleoside 6-Thio-2'-Deoxyguanosine Exhibits Antitumor Activity in Gliomas Clinical Cancer Research 2021-12-15 [PMID: 34593527] (Western Blot)

Rebeillard F, De Gois S, Pietrancosta N et al. The Orphan GPCR Receptor, GPR88, Interacts with Nuclear Protein Partners in the Cerebral Cortex Cerebral cortex (New York, N.Y. : 1991) 2021-07-09 [PMID: 34247243]

Wille A, Amort T, Singewald N et al. Dysregulation of select ATP-dependent chromatin remodeling factors in high trait anxiety. Behav. Brain Res. 2016-05-18 [PMID: 27208790] (WB, Mouse)

Wille A, Maurer V, Piatti P et al. Impaired Contextual Fear Extinction Learning is Associated with Aberrant Regulation of CHD-Type Chromatin Remodeling Factors. Front Behav Neurosci 2015-01-01 [PMID: 26635563] (WB)



Novus Biologicals USA

10730 E. Briarwood Avenue
Centennial, CO 80112
USA
Phone: 303.730.1950
Toll Free: 1.888.506.6887
Fax: 303.730.1966
nb-customerservice@bio-techne.com

Bio-Techne Canada

21 Canmotor Ave
Toronto, ON M8Z 4E6
Canada
Phone: 905.827.6400
Toll Free: 855.668.8722
Fax: 905.827.6402
canada.inquires@bio-techne.com

Bio-Techne Ltd

19 Barton Lane
Abingdon Science Park
Abingdon, OX14 3NB, United Kingdom
Phone: (44) (0) 1235 529449
Free Phone: 0800 37 34 15
Fax: (44) (0) 1235 533420
info.EMEA@bio-techne.com

General Contact Information

www.novusbio.com
Technical Support: nb-technical@bio-techne.com
Orders: nb-customerservice@bio-techne.com
General: novus@novusbio.com

Products Related to NBP1-32851

NBP2-33376H	Blue Marker Antibody (6F4-F6) [HRP]
HAF008	Goat anti-Rabbit IgG Secondary Antibody [HRP]
NB7160	Goat anti-Rabbit IgG (H+L) Secondary Antibody [HRP]
NBP2-24891	Rabbit IgG Isotype Control

Limitations

This product is for research use only and is not approved for use in humans or in clinical diagnosis. Primary Antibodies are guaranteed for 1 year from date of receipt.

For more information on our 100% guarantee, please visit www.novusbio.com/guarantee

Earn gift cards/discounts by submitting a review: www.novusbio.com/reviews/submit/NBP1-32851

Earn gift cards/discounts by submitting a publication using this product:
www.novusbio.com/publications

