

# Product Datasheet

## MAD1L1/MAD1 Antibody - BSA Free NBP1-32775

Unit Size: 100 ul

Aliquot and store at -20C or -80C. Avoid freeze-thaw cycles.

[www.novusbio.com](http://www.novusbio.com)



[technical@novusbio.com](mailto:technical@novusbio.com)

### Publications: 2

Protocols, Publications, Related Products, Reviews, Research Tools and Images at:  
[www.novusbio.com/NBP1-32775](http://www.novusbio.com/NBP1-32775)

Updated 9/9/2025 v.20.1

Earn rewards for product  
reviews and publications.

Submit a publication at [www.novusbio.com/publications](http://www.novusbio.com/publications)

Submit a review at [www.novusbio.com/reviews/destination/NBP1-32775](http://www.novusbio.com/reviews/destination/NBP1-32775)



**NBP1-32775**

MAD1L1/MAD1 Antibody - BSA Free

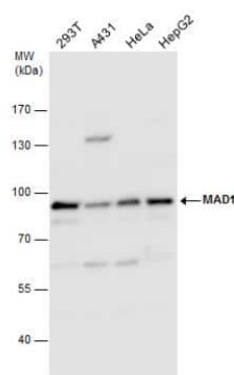
Product Information	
<b>Unit Size</b>	100 ul
<b>Concentration</b>	Concentrations vary lot to lot. See vial label for concentration. If unlisted please contact technical services.
<b>Storage</b>	Aliquot and store at -20C or -80C. Avoid freeze-thaw cycles.
<b>Clonality</b>	Polyclonal
<b>Preservative</b>	0.025% Proclin 300
<b>Isotype</b>	IgG
<b>Purity</b>	Antigen Affinity-purified
<b>Buffer</b>	PBS, 20% Glycerol
<b>Target Molecular Weight</b>	83 kDa

Product Description	
<b>Description</b>	Novus Biologicals Rabbit MAD1L1/MAD1 Antibody - BSA Free (NBP1-32775) is a polyclonal antibody validated for use in IHC, WB, ICC/IF, IP and ChIP. Anti-MAD1L1/MAD1 Antibody: Cited in 2 publications. All Novus Biologicals antibodies are covered by our 100% guarantee.
<b>Host</b>	Rabbit
<b>Gene ID</b>	8379
<b>Gene Symbol</b>	MAD1L1
<b>Species</b>	Human, Mouse, Rat, Marsupial
<b>Reactivity Notes</b>	Potorous tridactylus/Potoroo (100%), Bovine (86%).
<b>Immunogen</b>	Recombinant protein encompassing a sequence within the center region of human MAD1L1/MAD1. The exact sequence is proprietary.

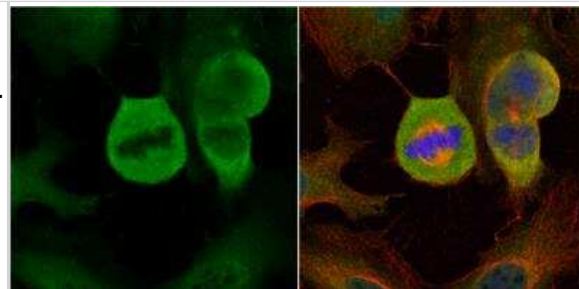
Product Application Details	
<b>Applications</b>	Western Blot, Immunohistochemistry-Paraffin, Immunocytochemistry/Immunofluorescence, Immunohistochemistry, Immunoprecipitation, Chromatin Immunoprecipitation (ChIP)
<b>Recommended Dilutions</b>	Western Blot 1:500-1:20000, Immunohistochemistry 1:100-1:1000, Immunocytochemistry/ Immunofluorescence 1:100-1:1000, Immunoprecipitation 1:100-1:500, Immunohistochemistry-Paraffin 1:100-1:1000, Chromatin Immunoprecipitation (ChIP) Assay dependent

**Images**

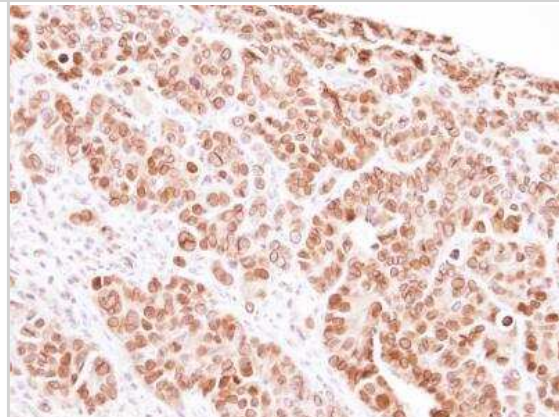
Western Blot: MAD1L1/MAD1 Antibody [NBP1-32775] - Various whole cell extracts (30 ug) were separated by 7.5% SDS-PAGE, and the membrane was blotted with MAD1 antibody diluted by 1:5000.



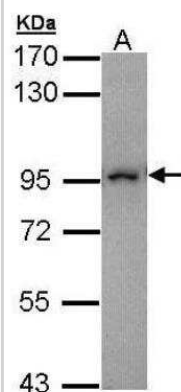
Immunocytochemistry/Immunofluorescence: MAD1L1/MAD1 Antibody [NBP1-32775] - HeLa cells were fixed in 4% paraformaldehyde at RT for 15 min. Green: MAD1 protein stained by MAD1 antibody diluted at 1:500. Red: HEC1, a kinetochore marker, stained by HEC1 antibody [9G3.23] diluted at 1:500. Blue: Hoechst 33342 staining.



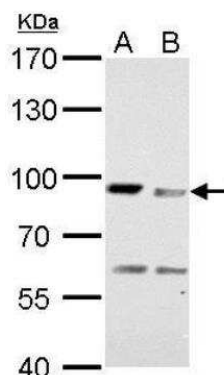
Immunohistochemistry-Paraffin: MAD1L1/MAD1 Antibody [NBP1-32775] - Paraffin-embedded SW480 Xenograft, using antibody at 1:100 dilution.



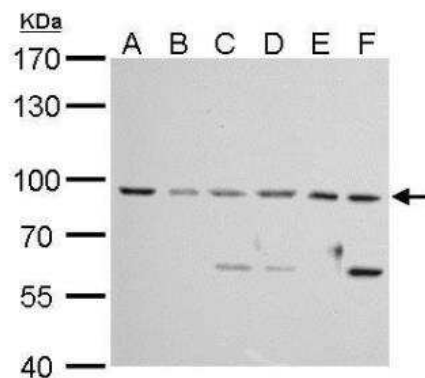
Western Blot: MAD1L1/MAD1 Antibody [NBP1-32775] - Sample (30 ug of whole cell lysate) A: Molt-4 7.5% SDS PAGE diluted at 1:10000



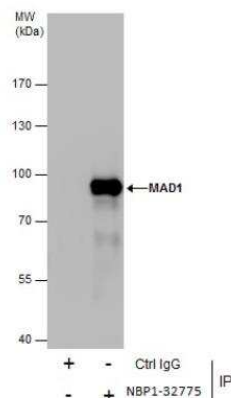
Western Blot: MAD1L1/MAD1 Antibody [NBP1-32775] - A. 30 ug PC-12 whole cell lysate/extract B. 30 ug Rat 2 whole cell lysate/extract 7.5% SDS-PAGE MAD1 antibody dilution: 1:3000 The HRP-conjugated anti-rabbit IgG antibody (NBP2-19301) was used to detect the primary antibody.



Western Blot: MAD1L1/MAD1 Antibody [NBP1-32775] - A. 30 ug Neuro2A whole cell lysate/extract B. 30 ug GL261 whole cell lysate/extract C. 30 ug C8D30 whole cell lysate/extract D. 30 ug NIH-3T3 whole cell lysate/extract E. 30 ug BCL-1 whole cell lysate/extract F. 30 ug Raw264.7 whole cell lysate/extract 7.5% SDS-PAGE MAD1 antibody dilution: 1:3000. The HRP-conjugated anti-rabbit IgG antibody (NBP2-19301) was used to detect the primary antibody.



Immunoprecipitation: MAD1L1/MAD1 Antibody [NBP1-32775] - Immunoprecipitation of MAD1 protein from HeLa whole cell extracts using 5 ug of MAD1 antibody. Western blot analysis was performed using MAD1 antibody. EasyBlot anti-Rabbit IgG was used as a secondary reagent.



## Publications

Chen Y, Yeh PC, Huang JC et al. The spindle checkpoint protein MAD1 regulates the expression of E-cadherin and prevents cell migration. *Oncol Rep* 2012-02-01 [PMID: 22024768] (Chemotaxis, WB, ICC/IF, Human)

Yeh PC, Yeh CC, Chen YC, Juang YL. RED, a spindle pole-associated protein, is required for kinetochore localization of MAD1, mitotic progression, and activation of the spindle assembly checkpoint. *J Biol Chem*. 2012-02-18 [PMID: 22351768] (ICC/IF, Chemotaxis, WB, Human)



### **Novus Biologicals USA**

10730 E. Briarwood Avenue  
Centennial, CO 80112  
USA  
Phone: 303.730.1950  
Toll Free: 1.888.506.6887  
Fax: 303.730.1966  
nb-customerservice@bio-techne.com

### **Bio-Techne Canada**

21 Canmotor Ave  
Toronto, ON M8Z 4E6  
Canada  
Phone: 905.827.6400  
Toll Free: 855.668.8722  
Fax: 905.827.6402  
canada.inquires@bio-techne.com

### **Bio-Techne Ltd**

19 Barton Lane  
Abingdon Science Park  
Abingdon, OX14 3NB, United Kingdom  
Phone: (44) (0) 1235 529449  
Free Phone: 0800 37 34 15  
Fax: (44) (0) 1235 533420  
info.EMEA@bio-techne.com

### **General Contact Information**

www.novusbio.com  
Technical Support: nb-technical@bio-techne.com  
Orders: nb-customerservice@bio-techne.com  
General: novus@novusbio.com

### **Products Related to NBP1-32775**

---

NBP2-33376H	Blue Marker Antibody (6F4-F6) [HRP]
HAF008	Goat anti-Rabbit IgG Secondary Antibody [HRP]
NB7160	Goat anti-Rabbit IgG (H+L) Secondary Antibody [HRP]
NBP2-24891	Rabbit IgG Isotype Control

---

### **Limitations**

This product is for research use only and is not approved for use in humans or in clinical diagnosis. Primary Antibodies are guaranteed for 1 year from date of receipt.

For more information on our 100% guarantee, please visit [www.novusbio.com/guarantee](http://www.novusbio.com/guarantee)

Earn gift cards/discounts by submitting a review: [www.novusbio.com/reviews/submit/NBP1-32775](http://www.novusbio.com/reviews/submit/NBP1-32775)

Earn gift cards/discounts by submitting a publication using this product:  
[www.novusbio.com/publications](http://www.novusbio.com/publications)

