

# Product Datasheet

## TWA1 Antibody - BSA Free

### NBP1-32596

Unit Size: 100 ul

Aliquot and store at -20C or -80C. Avoid freeze-thaw cycles.

[www.novusbio.com](http://www.novusbio.com)



[technical@novusbio.com](mailto:technical@novusbio.com)

#### Publications: 3

Protocols, Publications, Related Products, Reviews, Research Tools and Images at:  
[www.novusbio.com/NBP1-32596](http://www.novusbio.com/NBP1-32596)

Updated 9/25/2025 v.20.1

Earn rewards for product  
reviews and publications.

Submit a publication at [www.novusbio.com/publications](http://www.novusbio.com/publications)

Submit a review at [www.novusbio.com/reviews/destination/NBP1-32596](http://www.novusbio.com/reviews/destination/NBP1-32596)



**NBP1-32596**

TWA1 Antibody - BSA Free

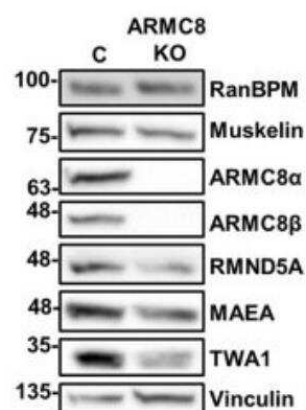
| Product Information            |  |
|--------------------------------|--|
| <b>Unit Size</b>               | 100 ul   |
| <b>Concentration</b>           | Concentrations vary lot to lot. See vial label for concentration. If unlisted please contact technical services. |
| <b>Storage</b>                 | Aliquot and store at -20C or -80C. Avoid freeze-thaw cycles.   |
| <b>Clonality</b>               | Polyclonal   |
| <b>Preservative</b>            | 0.01% Thimerosal   |
| <b>Isotype</b>                 | IgG  |
| <b>Purity</b>                  | Antigen Affinity-purified  |
| <b>Buffer</b>                  | 0.1M Tris, 0.1M Glycine, 10% Glycerol  |
| <b>Target Molecular Weight</b> | 27 kDa   |

| Product Description     |   |
|-------------------------|---|
| <b>Description</b>      | Novus Biologicals Knockout (KO) Validated Rabbit TWA1 Antibody - BSA Free (NBP1-32596) is a polyclonal antibody validated for use in IHC, WB and ICC/IF. Anti-TWA1 Antibody: Cited in 3 publications. All Novus Biologicals antibodies are covered by our 100% guarantee. |
| <b>Host</b>             | Rabbit  |
| <b>Gene ID</b>          | 54994   |
| <b>Gene Symbol</b>      | GID8  |
| <b>Species</b>          | Human, Rat  |
| <b>Reactivity Notes</b> | Xenopus laevis (96%).   |
| <b>Immunogen</b>        | Recombinant protein encompassing a sequence within the center region of human TWA1. The exact sequence is proprietary.  |

| Product Application Details  |   |
|------------------------------|---|
| <b>Applications</b>          | Western Blot, Immunohistochemistry-Paraffin, Immunocytochemistry/Immunofluorescence, Immunohistochemistry, Immunohistochemistry-Frozen, Knockout Validated  |
| <b>Recommended Dilutions</b> | Western Blot 1:500-1:3000, Immunohistochemistry 1:100-1:1000, Immunocytochemistry/ Immunofluorescence 1:100-1:1000, Immunohistochemistry-Paraffin 1:100-1:1000, Immunohistochemistry-Frozen Assay dependent, Knockout Validated |

**Images**

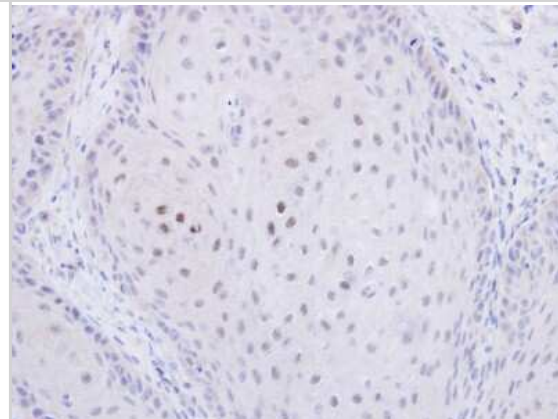
Western Blot: TWA1 Antibody [NBP1-32596] - ARMC8 HEK293 CRISPR knockout cells were analyzed by Western blot with antibodies to CTLH complex members, as indicated. Vinculin was used as a loading control. Image collected and cropped by CiteAb from the following publication ([nature.com/articles/s41598-019-46279-5](https://www.nature.com/articles/s41598-019-46279-5)), licensed under a CC-BY license.



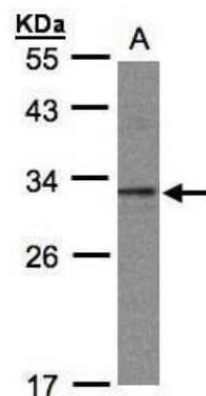
Immunocytochemistry/Immunofluorescence: TWA1 Antibody [NBP1-32596] - Paraformaldehyde-fixed HeLa, using antibody at 1:1000 dilution.



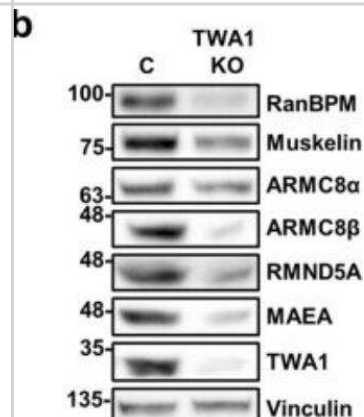
Immunohistochemistry-Paraffin: TWA1 Antibody [NBP1-32596] - Paraffin-embedded Cal27 xenograft, using antibody at 1:500 dilution.



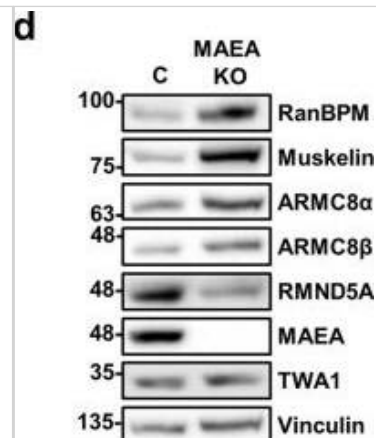
Western Blot: TWA1 Antibody [NBP1-32596] - (30 ug whole cell lysate) A: 293T 12% SDS PAGE; antibody diluted at 1:1000



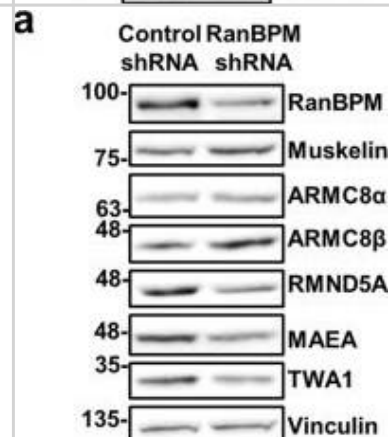
Western Blot: TWA1 Antibody [NBP1-32596] - TWA1 HEK293 CRISPR knockout cells were analyzed by Western blot with antibodies to CTLH complex members, as indicated. Vinculin was used as a loading control. Quantifications are shown below each blot and protein levels are shown relative to control cells set to 1 and normalized to Vinculin levels. Image collected and cropped by CiteAb from the following publication ([nature.com/articles/s41598-019-46279-5](https://www.nature.com/articles/s41598-019-46279-5)), licensed under a CC-BY license.



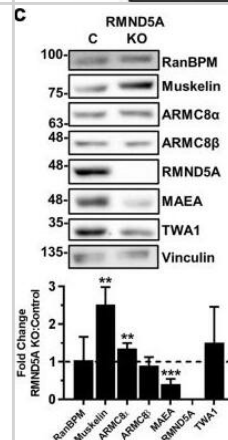
Western Blot: TWA1 Antibody [NBP1-32596] - RanBPM & TWA1 are essential for complex stability. Whole cell extracts prepared from control shRNA & RanBPM shRNA HEK293 cells (a), or from control (labelled as C), TWA1, RMND5A, MAEA, ARMC8 & muskelin HEK293 CRISPR knockout cells (b–f) were analyzed by Western blot with antibodies to CTLH complex members, as indicated. Vinculin was used as a loading control. Quantifications are shown below each blot & protein levels are shown relative to control cells set to 1 & normalized to Vinculin levels. Data represent averages from three separate experiments, with error bars indicating SD. \*P < 0.05, \*\*P < 0.01, \*\*\*P < 0.001, \*\*\*\*P < 0.0001. Image collected & cropped by CiteAb from the following publication (<https://pubmed.ncbi.nlm.nih.gov/31285494>), licensed under a CC-BY license. Not internally tested by Novus Biologicals.



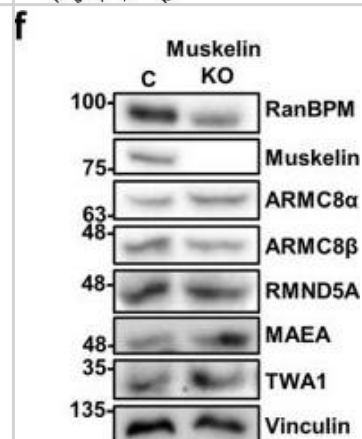
Western Blot: TWA1 Antibody [NBP1-32596] - RanBPM & TWA1 are essential for complex stability. Whole cell extracts prepared from control shRNA & RanBPM shRNA HEK293 cells (a), or from control (labelled as C), TWA1, RMND5A, MAEA, ARMC8 & muskelin HEK293 CRISPR knockout cells (b–f) were analyzed by Western blot with antibodies to CTLH complex members, as indicated. Vinculin was used as a loading control. Quantifications are shown below each blot & protein levels are shown relative to control cells set to 1 & normalized to Vinculin levels. Data represent averages from three separate experiments, with error bars indicating SD. \*P < 0.05, \*\*P < 0.01, \*\*\*P < 0.001, \*\*\*\*P < 0.0001. Image collected & cropped by CiteAb from the following publication (<https://pubmed.ncbi.nlm.nih.gov/31285494>), licensed under a CC-BY license. Not internally tested by Novus Biologicals.



Western Blot: TWA1 Antibody [NBP1-32596] - RanBPM & TWA1 are essential for complex stability. Whole cell extracts prepared from control shRNA & RanBPM shRNA HEK293 cells (a), or from control (labelled as C), TWA1, RMND5A, MAEA, ARMC8 & muskelin HEK293 CRISPR knockout cells (b–f) were analyzed by Western blot with antibodies to CTLH complex members, as indicated. Vinculin was used as a loading control. Quantifications are shown below each blot & protein levels are shown relative to control cells set to 1 & normalized to Vinculin levels. Data represent averages from three separate experiments, with error bars indicating SD. \*P < 0.05, \*\*P < 0.01, \*\*\*P < 0.001, \*\*\*\*P < 0.0001. Image collected & cropped by CiteAb from the following publication (<https://pubmed.ncbi.nlm.nih.gov/31285494>), licensed under a CC-BY license. Not internally tested by Novus Biologicals.



Western Blot: TWA1 Antibody [NBP1-32596] - RanBPM & TWA1 are essential for complex stability. Whole cell extracts prepared from control shRNA & RanBPM shRNA HEK293 cells (a), or from control (labelled as C), TWA1, RMND5A, MAEA, ARMC8 & muskelin HEK293 CRISPR knockout cells (b–f) were analyzed by Western blot with antibodies to CTLH complex members, as indicated. Vinculin was used as a loading control. Quantifications are shown below each blot & protein levels are shown relative to control cells set to 1 & normalized to Vinculin levels. Data represent averages from three separate experiments, with error bars indicating SD. \*P < 0.05, \*\*P < 0.01, \*\*\*P < 0.001, \*\*\*\*P < 0.0001. Image collected & cropped by CiteAb from the following publication (<https://pubmed.ncbi.nlm.nih.gov/31285494>), licensed under a CC-BY license. Not internally tested by Novus Biologicals.



## Publications

Onea G, Maitland MER, Wang X et al. Distinct nuclear and cytoplasmic assemblies and interactomes of the mammalian CTLH E3 ligase complex *Journal of cell science* 2022-07-15 [PMID: 35833506]

Sherpa D, Chrustowicz J, Qiao S et al. GID E3 ligase supramolecular chelate assembly configures multipronged ubiquitin targeting of an oligomeric metabolic enzyme *Molecular cell* 2021-04-22 [PMID: 33905682] (WB, Human)

Maitland MER, Onea G, Chiasson CA et al. The mammalian CTLH complex is an E3 ubiquitin ligase that targets its subunit muskelin for degradation *Sci Rep* 2019-07-08 [PMID: 31285494] (WB, Human)





### **Novus Biologicals USA**

10730 E. Briarwood Avenue  
Centennial, CO 80112  
USA  
Phone: 303.730.1950  
Toll Free: 1.888.506.6887  
Fax: 303.730.1966  
nb-customerservice@bio-techne.com

### **Bio-Techne Canada**

21 Canmotor Ave  
Toronto, ON M8Z 4E6  
Canada  
Phone: 905.827.6400  
Toll Free: 855.668.8722  
Fax: 905.827.6402  
canada.inquires@bio-techne.com

### **Bio-Techne Ltd**

19 Barton Lane  
Abingdon Science Park  
Abingdon, OX14 3NB, United Kingdom  
Phone: (44) (0) 1235 529449  
Free Phone: 0800 37 34 15  
Fax: (44) (0) 1235 533420  
info.EMEA@bio-techne.com

### **General Contact Information**

www.novusbio.com  
Technical Support: nb-technical@bio-techne.com  
Orders: nb-customerservice@bio-techne.com  
General: novus@novusbio.com

### **Products Related to NBP1-32596**

---

|             |   |
|-------------|---|
| NBP2-33376H | Blue Marker Antibody (6F4-F6) [HRP]                 |
| HAF008      | Goat anti-Rabbit IgG Secondary Antibody [HRP]       |
| NB7160      | Goat anti-Rabbit IgG (H+L) Secondary Antibody [HRP] |
| NBP2-24891  | Rabbit IgG Isotype Control                          |

---

### **Limitations**

This product is for research use only and is not approved for use in humans or in clinical diagnosis. Primary Antibodies are guaranteed for 1 year from date of receipt.

For more information on our 100% guarantee, please visit [www.novusbio.com/guarantee](http://www.novusbio.com/guarantee)

Earn gift cards/discounts by submitting a review: [www.novusbio.com/reviews/submit/NBP1-32596](http://www.novusbio.com/reviews/submit/NBP1-32596)

Earn gift cards/discounts by submitting a publication using this product:  
[www.novusbio.com/publications](http://www.novusbio.com/publications)

