

Product Datasheet

IL-1ra/IL-1F3/IL1RN Antibody - Azide Free NBP1-32568

Unit Size: 100 ul

Aliquot and store at -20C or -80C. Avoid freeze-thaw cycles.

www.novusbio.com



technical@novusbio.com

Publications: 3

Protocols, Publications, Related Products, Reviews, Research Tools and Images at:
www.novusbio.com/NBP1-32568

Updated 9/9/2025 v.20.1

Earn rewards for product
reviews and publications.

Submit a publication at www.novusbio.com/publications

Submit a review at www.novusbio.com/reviews/destination/NBP1-32568



NBP1-32568**IL-1ra/IL-1F3/IL1RN Antibody - Azide Free**

Product Information	
Unit Size	100 ul
Concentration	Concentrations vary lot to lot. See vial label for concentration. If unlisted please contact technical services.
Storage	Aliquot and store at -20C or -80C. Avoid freeze-thaw cycles.
Clonality	Polyclonal
Preservative	0.025% Proclin 300
Isotype	IgG
Purity	Antigen Affinity-purified
Buffer	PBS, 1% BSA, 20% Glycerol
Target Molecular Weight	20 kDa

Product Description	
Description	Novus Biologicals Rabbit IL-1ra/IL-1F3/IL1RN Antibody - Azide Free (NBP1-32568) is a polyclonal antibody validated for use in IHC, WB and ICC/IF. Anti-IL-1ra/IL-1F3/IL1RN Antibody: Cited in 2 publications. All Novus Biologicals antibodies are covered by our 100% guarantee.
Host	Rabbit
Gene ID	3557
Gene Symbol	IL1RN
Species	Human
Reactivity Notes	Immunogen displays the following percentage of sequence identity for non-tested species: Canine (83%), Porcine (82%), Bovine (81%).
Immunogen	Recombinant protein encompassing a sequence within the center region of human IL-1ra/IL-1F3/IL1RN. The exact sequence is proprietary.

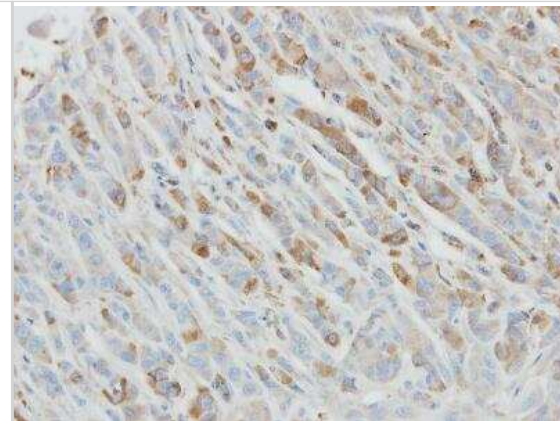
Product Application Details	
Applications	Western Blot, Immunohistochemistry-Paraffin, Immunocytochemistry/Immunofluorescence, Immunohistochemistry
Recommended Dilutions	Western Blot 1:500-1:3000, Immunohistochemistry 1:100-1:1000, Immunocytochemistry/ Immunofluorescence 1:100-1:1000, Immunohistochemistry-Paraffin 1:100-1:1000

Images

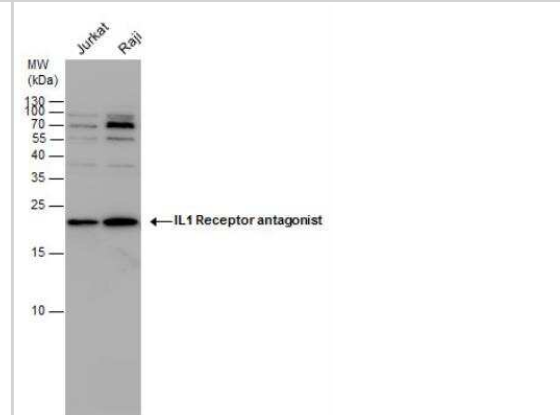
Immunocytochemistry/Immunofluorescence: IL-1ra/IL-1F3/IL1RN Antibody [NBP1-32568] - Analysis of methanol-fixed HeLa, using antibody at 1:200 dilution.



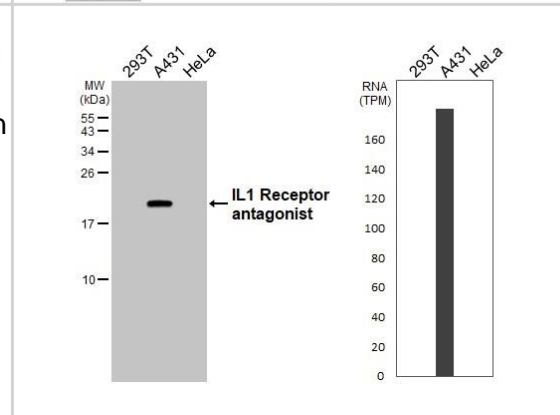
Immunohistochemistry-Paraffin: IL-1ra/IL-1F3/IL1RN Antibody [NBP1-32568] - Paraffin-embedded PC3 xenograft, using antibody at 1:500 dilution.



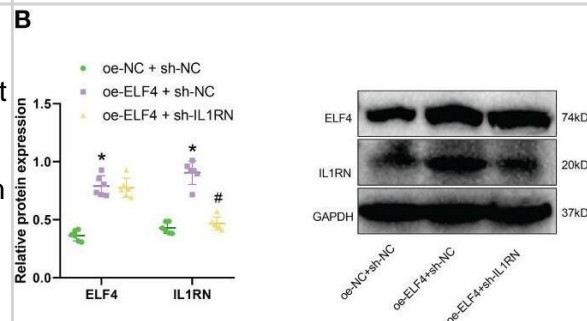
Western Blot: IL-1ra/IL-1F3/IL1RN Antibody [NBP1-32568] - IL-1ra Antibody detects IL-1ra protein by Western blot analysis. Various whole cell extracts (30 ug) were separated by 15 % SDS-PAGE, and blotted with IL-1ra Antibody diluted by 1:1000



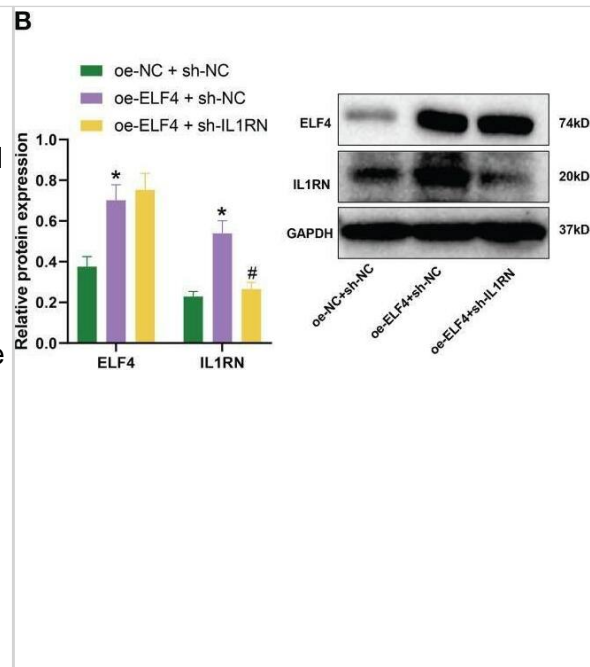
Various whole cell extracts (30 ug) were separated by 15% SDS-PAGE, and the membrane was blotted with IL-1ra/IL-1F3/IL1RN antibody (NBP1-32568) diluted at 1:1000. The HRP-conjugated anti-rabbit IgG antibody was used to detect the primary antibody. Corresponding RNA expression data for the same cell lines are based on Human Protein Atlas program.



Effects of the ELF4/IL1RN axis on inflammation symptoms in mice intestines. (A) RT-qPCR was used to detect the mRNA levels of ELF4 and IL1RN in intestinal tissues of mice from each group; (B) Western blot was used to detect the protein levels of ELF4 and IL1RN in intestinal tissues of mice from each group; (C) Flow cytometry was used to detect the proportions of M1 and M2 cells in intestinal tissues of mice from each group; (D) Western blot was used to detect the protein levels of M1 marker iNOS and M2 markers Arg1 and CD163 in intestinal tissues of mice from each group; (E) The DAI scores of mice in each group were recorded; (F) H&E staining was used to evaluate colonic tissue injury in mice from each group; (G) ELISA was used to measure the levels of inflammatory factors Trem1, IL-6, TNF- α , and IL-1 β in the serum of mice from each group; (H) Flow cytometry was used to detect the proportions of TH17 and Treg cells in intestinal tissues of mice from each group, as well as the TH17/Treg ratio. * indicates $P < 0.05$ compared with oe-NC + sh-NC, and # indicates $P < 0.05$ compared with oe-ELF4+sh-NC. All cell experiments were repeated three times. Image collected and cropped by CiteAb from the following open publication (<https://pubmed.ncbi.nlm.nih.gov/38022496>), licensed under a CC-BY license. Not internally tested by Novus Biologicals.



The impact of ELF4/IL1RN axis on macrophages and mouse intestinal epithelial cells. (A) The mRNA levels of ELF4 and IL1RN in each group of BMDM cells were detected by RT-qPCR; (B) The protein levels of ELF4 and IL1RN in each group of BMDM cells were detected by Western blot; (C) The polarization of M1 and M2 in each group of BMDM cells was detected by flow cytometry; (D) The protein levels of M1 marker iNOS and M2 markers Arg1 and CD163 in each group of BMDM cells were detected by Western blot; (E) The apoptosis of each group of MODE-K cells was detected by flow cytometry (The sum of the blue quadrant areas represents the apoptotic rate); (F) The protein levels of apoptosis factors Bcl-2, Bax, cleaved caspase-1, pro caspase-1, caspase 3 and Cytochrome c in each group of MODE-K cells were detected by Western blot; (G) The levels of inflammatory factors Trem1, IL-6, TNF- α , and IL-1 β in each group of MODE-K cells were detected by ELISA. * indicates $P < 0.05$ compared with oe-NC + sh-NC, and # indicates $P < 0.05$ compared with oe-ELF4 + sh-NC. All cell experiments were repeated three times. Image collected and cropped by CiteAb from the following open publication (<https://pubmed.ncbi.nlm.nih.gov/38022496>), licensed under a CC-BY license. Not internally tested by Novus Biologicals.



Publications

Zhang A, Ma Y, Liu Y et al. Mannose Oligosaccharide-Conjugated In Situ Pore-Forming Injectable Hydrogels for Rheumatoid Arthritis Treatment by Reprogramming Macrophage Extracellular Vesicles. *Small methods* 2025-07-15 [PMID: 40662273]

Hull RL, Gibson RL, McNamara S et al. Islet Interleukin-1beta Immunoreactivity Is an Early Feature of Cystic Fibrosis That May Contribute to beta-Cell Failure. *Diabetes Care* 2018-04-01 [PMID: 29437698] (Human)

Kollgaard T, Enevold C, Bendtzen K et al. Cholesterol crystals enhance TLR2- and TLR4-mediated pro-inflammatory cytokine responses of monocytes to the proatherogenic oral bacterium *Porphyromonas gingivalis*. *PLoS ONE*. 2017-02-24 [PMID: 28235036] (Human)



Novus Biologicals USA

10730 E. Briarwood Avenue
Centennial, CO 80112
USA
Phone: 303.730.1950
Toll Free: 1.888.506.6887
Fax: 303.730.1966
nb-customerservice@bio-techne.com

Bio-Techne Canada

21 Canmotor Ave
Toronto, ON M8Z 4E6
Canada
Phone: 905.827.6400
Toll Free: 855.668.8722
Fax: 905.827.6402
canada.inquires@bio-techne.com

Bio-Techne Ltd

19 Barton Lane
Abingdon Science Park
Abingdon, OX14 3NB, United Kingdom
Phone: (44) (0) 1235 529449
Free Phone: 0800 37 34 15
Fax: (44) (0) 1235 533420
info.EMEA@bio-techne.com

General Contact Information

www.novusbio.com
Technical Support: nb-technical@bio-techne.com
Orders: nb-customerservice@bio-techne.com
General: novus@novusbio.com

Products Related to NBP1-32568

NBP2-33376H	Blue Marker Antibody (6F4-F6) [HRP]
HAF008	Goat anti-Rabbit IgG Secondary Antibody [HRP]
NB7160	Goat anti-Rabbit IgG (H+L) Secondary Antibody [HRP]
NBP2-24891	Rabbit IgG Isotype Control

Limitations

This product is for research use only and is not approved for use in humans or in clinical diagnosis. Primary Antibodies are guaranteed for 1 year from date of receipt.

For more information on our 100% guarantee, please visit www.novusbio.com/guarantee

Earn gift cards/discounts by submitting a review: www.novusbio.com/reviews/submit/NBP1-32568

Earn gift cards/discounts by submitting a publication using this product:
www.novusbio.com/publications

