

Product Datasheet

PKC gamma Antibody - BSA Free NBP1-32535

Unit Size: 100 ul

Aliquot and store at -20C or -80C. Avoid freeze-thaw cycles.

www.novusbio.com



technical@novusbio.com

Protocols, Publications, Related Products, Reviews, Research Tools and Images at:
www.novusbio.com/NBP1-32535

Updated 9/25/2025 v.20.1

Earn rewards for product
reviews and publications.

Submit a publication at www.novusbio.com/publications

Submit a review at www.novusbio.com/reviews/destination/NBP1-32535



NBP1-32535

PKC gamma Antibody - BSA Free

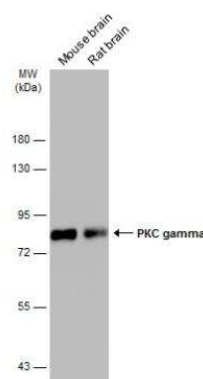
Product Information	
Unit Size	100 ul
Concentration	Concentrations vary lot to lot. See vial label for concentration. If unlisted please contact technical services.
Storage	Aliquot and store at -20C or -80C. Avoid freeze-thaw cycles.
Clonality	Polyclonal
Preservative	0.025% Proclin 300
Isotype	IgG
Purity	Antigen Affinity-purified
Buffer	PBS, 20% Glycerol
Target Molecular Weight	78 kDa

Product Description	
Description	Novus Biologicals Rabbit PKC gamma Antibody - BSA Free (NBP1-32535) is a polyclonal antibody validated for use in IHC and WB. All Novus Biologicals antibodies are covered by our 100% guarantee.
Host	Rabbit
Gene ID	5582
Gene Symbol	PRKCG
Species	Human, Mouse, Rat
Immunogen	Recombinant protein encompassing a sequence within the center region of human PKC gamma. The exact sequence is proprietary.

Product Application Details	
Applications	Western Blot, Immunohistochemistry-Paraffin, Immunohistochemistry, Immunohistochemistry-Frozen
Recommended Dilutions	Western Blot 1:500-1:3000, Immunohistochemistry 1:100-1:1000, Immunohistochemistry-Paraffin 1:100-1:1000, Immunohistochemistry-Frozen 1:100-1:1000

Images

Western Blot: PKC gamma Antibody [NBP1-32535] - Various tissue extracts (50 ug) were separated by 7.5% SDS-PAGE, and the membrane was blotted with PKC gamma antibody diluted at 1:3000. The HRP-conjugated anti-rabbit IgG antibody (NBP2-19301) was used to detect the primary antibody.



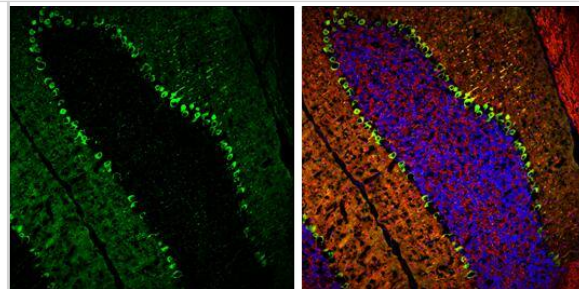
PKC gamma antibody detects PKC gamma protein expression by immunohistochemical analysis.

Sample: Frozen-sectioned adult mouse cerebellum.

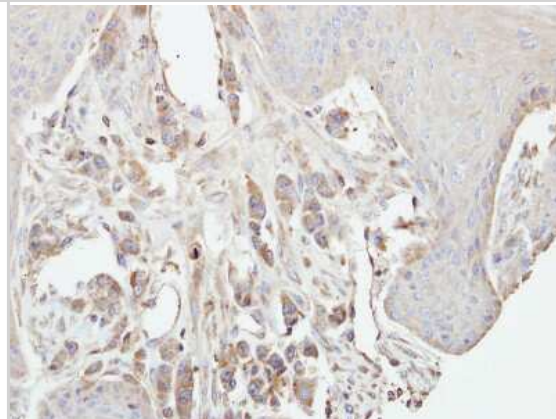
Green: PKC gamma protein stained by PKC gamma antibody (NBP1-32535) diluted at 1:250.

Red: beta Tubulin 3/ TUJ1, stained by beta Tubulin 3/ TUJ1 antibody [GT11710] diluted at 1:500.

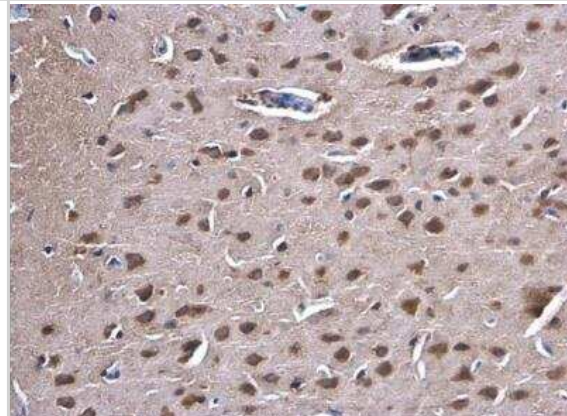
Blue: Fluoroshield with DAPI .



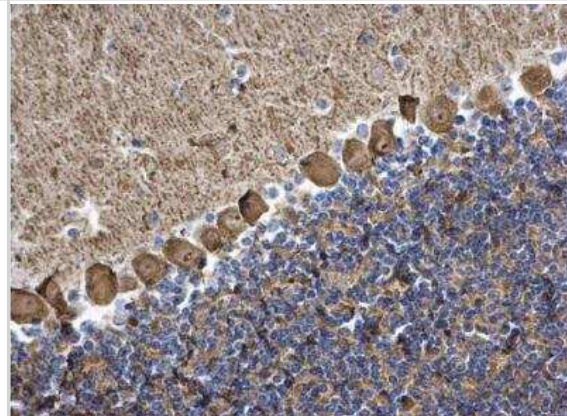
Immunohistochemistry-Paraffin: PKC gamma Antibody [NBP1-32535] - Paraffin-embedded Hun7 xenograft, using antibody at 1:500 dilution.



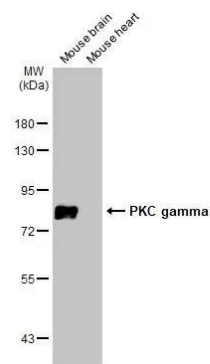
Immunohistochemistry-Paraffin: PKC gamma Antibody [NBP1-32535] - Paraffin-embedded rat brain. PKC gamma antibody diluted at 1:500.



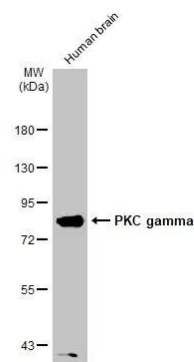
Immunohistochemistry-Paraffin: PKC gamma Antibody [NBP1-32535] - Paraffin-embedded mouse brain. PKC gamma antibody diluted at 1:500.



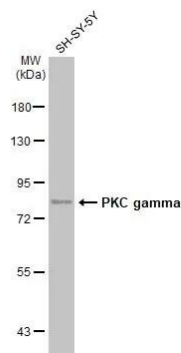
Western Blot: PKC gamma Antibody [NBP1-32535] - Various tissue extracts (50 ug) were separated by 7.5% SDS-PAGE, and the membrane was blotted with PKC gamma antibody (NBP1-32535) diluted at 1:3000. The HRP-conjugated anti-rabbit IgG antibody was used to detect the primary antibody.



Western Blot: PKC gamma Antibody [NBP1-32535] - Human tissue extract (30 ug) was separated by 7.5% SDS-PAGE, and the membrane was blotted with PKC gamma antibody (NBP1-32535) diluted at 1:1000. The HRP-conjugated anti-rabbit IgG antibody was used to detect the primary antibody.



Western Blot: PKC gamma Antibody [NBP1-32535] - Whole cell extract (30 ug) was separated by 7.5% SDS-PAGE, and the membrane was blotted with PKC gamma antibody (NBP1-32535) diluted at 1:2000. The HRP-conjugated anti-rabbit IgG antibody was used to detect the primary antibody.





Novus Biologicals USA

10730 E. Briarwood Avenue
Centennial, CO 80112
USA
Phone: 303.730.1950
Toll Free: 1.888.506.6887
Fax: 303.730.1966
nb-customerservice@bio-techne.com

Bio-Techne Canada

21 Canmotor Ave
Toronto, ON M8Z 4E6
Canada
Phone: 905.827.6400
Toll Free: 855.668.8722
Fax: 905.827.6402
canada.inquires@bio-techne.com

Bio-Techne Ltd

19 Barton Lane
Abingdon Science Park
Abingdon, OX14 3NB, United Kingdom
Phone: (44) (0) 1235 529449
Free Phone: 0800 37 34 15
Fax: (44) (0) 1235 533420
info.EMEA@bio-techne.com

General Contact Information

www.novusbio.com
Technical Support: nb-technical@bio-techne.com
Orders: nb-customerservice@bio-techne.com
General: novus@novusbio.com

Products Related to NBP1-32535

NBP2-33376H	Blue Marker Antibody (6F4-F6) [HRP]
HAF008	Goat anti-Rabbit IgG Secondary Antibody [HRP]
NB7160	Goat anti-Rabbit IgG (H+L) Secondary Antibody [HRP]
NBP2-24891	Rabbit IgG Isotype Control

Limitations

This product is for research use only and is not approved for use in humans or in clinical diagnosis. Primary Antibodies are guaranteed for 1 year from date of receipt.

For more information on our 100% guarantee, please visit www.novusbio.com/guarantee

Earn gift cards/discounts by submitting a review: www.novusbio.com/reviews/submit/NBP1-32535

Earn gift cards/discounts by submitting a publication using this product:
www.novusbio.com/publications

