

Product Datasheet

Alpha Actinin 2 Antibody NBP1-32462

Unit Size: 0.1 ml

Aliquot and store at -20C or -80C. Avoid freeze-thaw cycles.

www.novusbio.com



technical@novusbio.com

Publications: 2

Protocols, Publications, Related Products, Reviews, Research Tools and Images at:
www.novusbio.com/NBP1-32462

Updated 9/25/2025 v.20.1

Earn rewards for product
reviews and publications.

Submit a publication at www.novusbio.com/publications

Submit a review at www.novusbio.com/reviews/destination/NBP1-32462



NBP1-32462

Alpha Actinin 2 Antibody

Product Information	
Unit Size	0.1 ml
Concentration	Concentrations vary lot to lot. See vial label for concentration. If unlisted please contact technical services.
Storage	Aliquot and store at -20C or -80C. Avoid freeze-thaw cycles.
Clonality	Polyclonal
Preservative	0.025% Proclin 300
Isotype	IgG
Purity	Antigen Affinity-purified
Buffer	PBS, 1% BSA, 20% Glycerol
Target Molecular Weight	104 kDa

Product Description	
Description	Novus Biologicals Rabbit Alpha Actinin 2 Antibody (NBP1-32462) is a polyclonal antibody validated for use in IHC, WB and ICC/IF. Anti-Alpha Actinin 2 Antibody: Cited in 1 publication. All Novus Biologicals antibodies are covered by our 100% guarantee.
Host	Rabbit
Gene ID	88
Gene Symbol	ACTN2
Species	Human, Mouse, Rat, Porcine, Zebrafish
Reactivity Notes	Xenopus laevis (94%).
Immunogen	Recombinant protein encompassing a sequence within the center region of human Alpha Actinin 2. The exact sequence is proprietary.

Product Application Details	
Applications	Western Blot, Immunohistochemistry-Paraffin, Immunocytochemistry/ Immunofluorescence, Immunohistochemistry
Recommended Dilutions	Western Blot 1:500-1:10000, Immunohistochemistry Assay dependent, Immunocytochemistry/ Immunofluorescence 1:100-1:1000, Immunohistochemistry-Paraffin 1:100-1:1000

Images

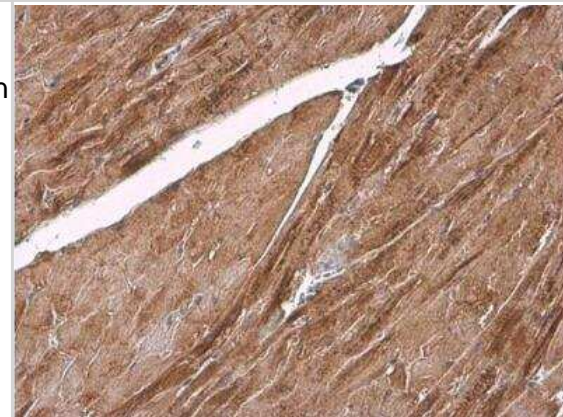
Immunohistochemistry-Paraffin: Alpha Actinin 2 Antibody [NBP1-32462] - Mouse muscle. alpha Actinin 2 stained by alpha Actinin 2 antibody [N1N3] diluted at 1:500. Antigen Retrieval: Citrate buffer, pH 6.0, 15 min.



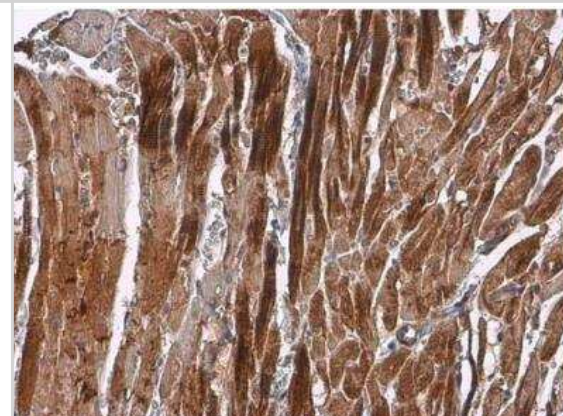
Immunohistochemistry-Paraffin: Alpha Actinin 2 Antibody [NBP1-32462]
- Rat muscle. alpha Actinin 2 antibody [N1N3] diluted at 1:500. Antigen Retrieval: Citrate buffer, pH 6.0, 15 min.



Immunohistochemistry-Paraffin: Alpha Actinin 2 Antibody [NBP1-32462]
- Mouse heart. Alpha Actinin 2 stained by alpha Actinin 2 antibody [N1N3] diluted at 1:2000. Antigen Retrieval: Citrate buffer, pH 6.0, 15 min



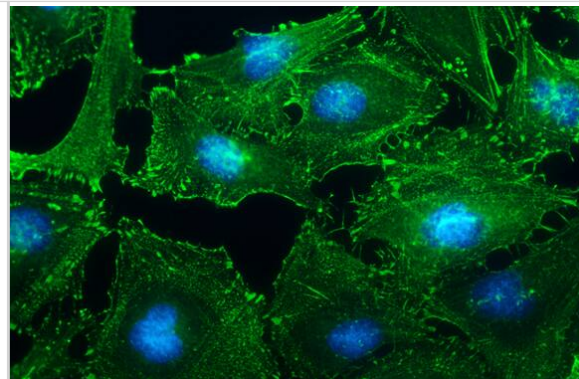
Immunohistochemistry-Paraffin: Alpha Actinin 2 Antibody [NBP1-32462]
- Rat heart, alpha Actinin 2 stained by alpha Actinin 2 antibody [N1N3] diluted at 1:2000. Antigen Retrieval: Citrate buffer, pH 6.0, 15 min



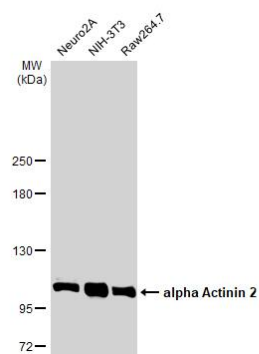
Immunohistochemistry-Paraffin: Alpha Actinin 2 Antibody [NBP1-32462]
- Mouse heart. alpha Actinin 2 stained by alpha Actinin 2 antibody [N1N3] diluted at 1:500. Antigen Retrieval: Citrate buffer, pH 6.0, 15 min.



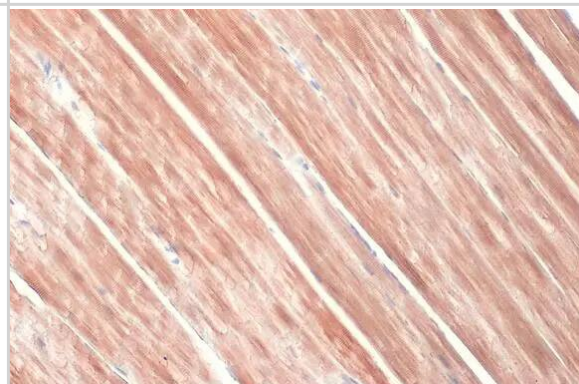
Immunocytochemistry/ Immunofluorescence: Alpha Actinin 2 Antibody [NBP1-32462] - Alpha Actinin 2 antibody [N1N3] detects Alpha Actinin 2 protein at cytoskeleton by immunofluorescent analysis. Sample: HeLa cells were fixed in ice-cold MeOH for 5 min. Green: Alpha Actinin 2 stained by Alpha Actinin 2 antibody [N1N3] (NBP1-32462) diluted at 1:500. Blue: Hoechst 33342 staining.



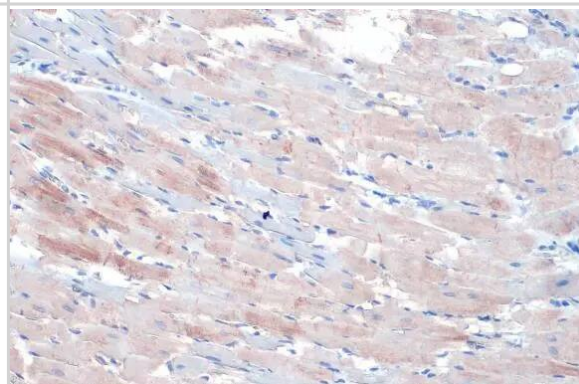
Western Blot: Alpha Actinin 2 Antibody [NBP1-32462] - Various whole cell extracts (30 ug) were separated by 5% SDS-PAGE, and the membrane was blotted with Alpha Actinin 2 antibody [N1N3] (NBP1-32462) diluted at 1:1000. The HRP-conjugated anti-rabbit IgG antibody was used to detect the primary antibody.



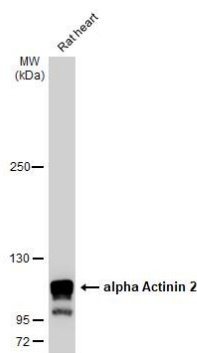
Immunohistochemistry-Paraffin: Alpha Actinin 2 Antibody [NBP1-32462] - Alpha Actinin 2 antibody [N1N3] detects Alpha Actinin 2 protein at cytoplasm by immunohistochemical analysis. Sample: Paraffin-embedded mouse muscle. Alpha Actinin 2 stained by Alpha Actinin 2 antibody [N1N3] (NBP1-32462) diluted at 1:500. Antigen Retrieval: Citrate buffer, pH 6.0, 15 min



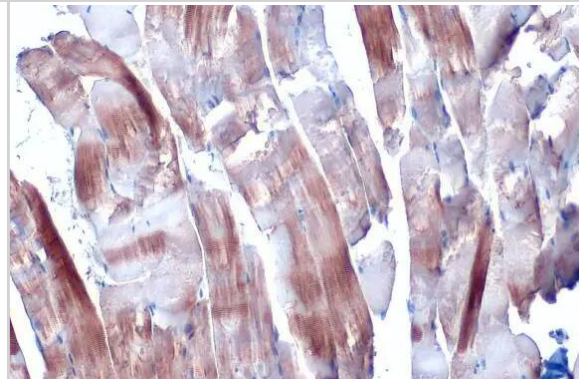
Immunohistochemistry-Paraffin: Alpha Actinin 2 Antibody [NBP1-32462] - Alpha Actinin 2 antibody [N1N3] detects Alpha Actinin 2 protein at cytoplasm by immunohistochemical analysis. Sample: Paraffin-embedded rat heart. Alpha Actinin 2 stained by Alpha Actinin 2 antibody [N1N3] (NBP1-32462) diluted at 1:500. Antigen Retrieval: Citrate buffer, pH 6.0, 15 min



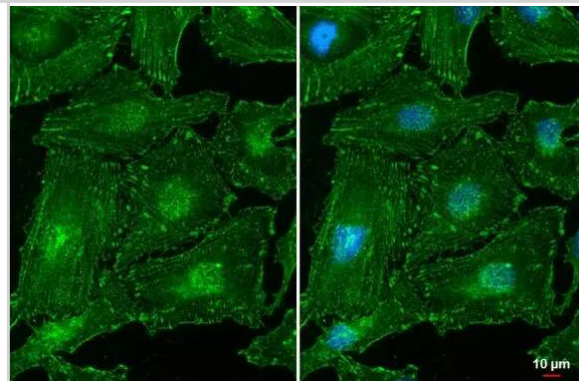
Western Blot: Alpha Actinin 2 Antibody [NBP1-32462] - Rat tissue extract (50 ug) was separated by 5% SDS-PAGE, and the membrane was blotted with Alpha Actinin 2 antibody [N1N3] (NBP1-32462) diluted at 1:20000. The HRP-conjugated anti-rabbit IgG antibody was used to detect the primary antibody.



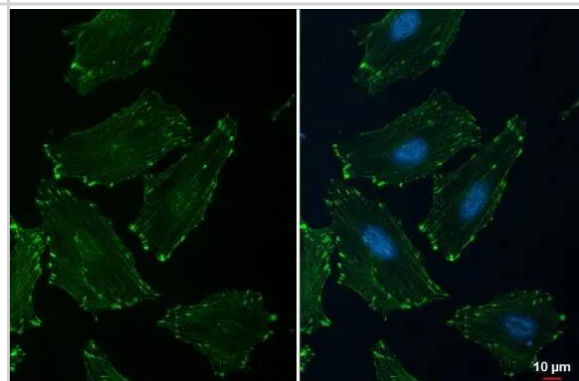
Immunohistochemistry-Paraffin: Alpha Actinin 2 Antibody [NBP1-32462] - Alpha Actinin 2 antibody [N1N3] detects Alpha Actinin 2 protein at cytoplasm by immunohistochemical analysis. Sample: Paraffin-embedded mouse muscle. Alpha Actinin 2 stained by Alpha Actinin 2 antibody [N1N3] (NBP1-32462) diluted at 1:500. Antigen Retrieval: Citrate buffer, pH 6.0, 15 min



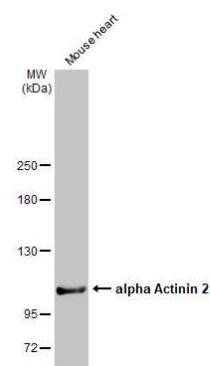
Immunocytochemistry/ Immunofluorescence: Alpha Actinin 2 Antibody [NBP1-32462] - Alpha Actinin 2 antibody [N1N3] detects Alpha Actinin 2 protein at cytoskeleton by immunofluorescent analysis. Sample: HeLa cells were fixed in ice-cold MeOH for 5 min. Green: Alpha Actinin 2 stained by Alpha Actinin 2 antibody [N1N3] (NBP1-32462) diluted at 1:500. Blue: Fluoroshield with DAPI .



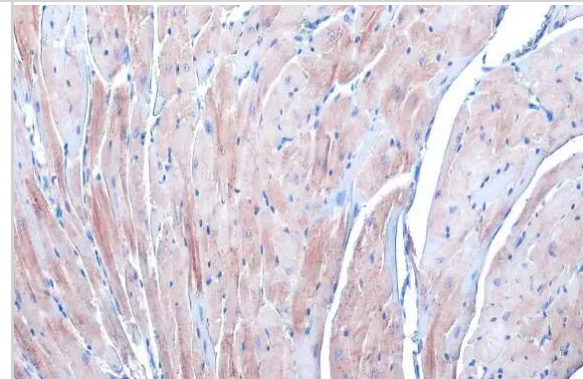
Immunocytochemistry/ Immunofluorescence: Alpha Actinin 2 Antibody [NBP1-32462] - Alpha Actinin 2 antibody [N1N3] detects Alpha Actinin 2 protein at cytoskeleton by immunofluorescent analysis. Sample: HeLa cells were fixed in ice-cold MeOH for 5 min. Green: Alpha Actinin 2 stained by Alpha Actinin 2 antibody [N1N3] (NBP1-32462) diluted at 1:500. Blue: Fluoroshield with DAPI .



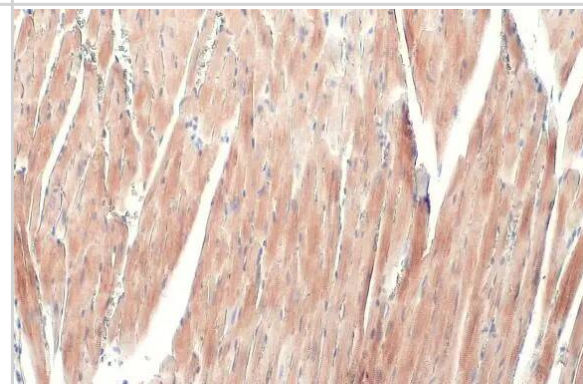
Western Blot: Alpha Actinin 2 Antibody [NBP1-32462] - Mouse tissue extract (50 ug) was separated by 5% SDS-PAGE, and the membrane was blotted with Alpha Actinin 2 antibody [N1N3] (NBP1-32462) diluted at 1:100000. The HRP-conjugated anti-rabbit IgG antibody was used to detect the primary antibody.



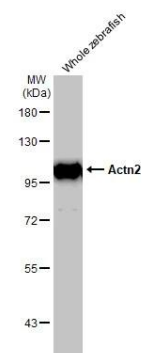
Immunohistochemistry-Paraffin: Alpha Actinin 2 Antibody [NBP1-32462] - Alpha Actinin 2 antibody [N1N3] detects Alpha Actinin 2 protein at cytoplasm by immunohistochemical analysis. Sample: Paraffin-embedded mouse heart. Alpha Actinin 2 stained by Alpha Actinin 2 antibody [N1N3] (NBP1-32462) diluted at 1:500. Antigen Retrieval: Citrate buffer, pH 6.0, 15 min



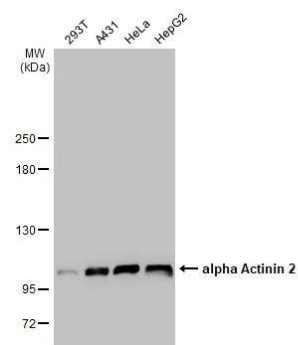
Immunohistochemistry-Paraffin: Alpha Actinin 2 Antibody [NBP1-32462] - Alpha Actinin 2 antibody [N1N3] detects Alpha Actinin 2 protein at cytoplasm by immunohistochemical analysis. Sample: Paraffin-embedded mouse heart. Alpha Actinin 2 stained by Alpha Actinin 2 antibody [N1N3] (NBP1-32462) diluted at 1:500. Antigen Retrieval: Citrate buffer, pH 6.0, 15 min



Western Blot: Alpha Actinin 2 Antibody [NBP1-32462] - Whole zebrafish extract (30 ug) was separated by 7.5% SDS-PAGE, and the membrane was blotted with Alpha Actinin 2 antibody [N1N3] (NBP1-32462) diluted at 1:1000. The HRP-conjugated anti-rabbit IgG antibody was used to detect the primary antibody.



Various whole cell extracts (30 ug) were separated by 5% SDS-PAGE, and the membrane was blotted with alpha Actinin 2 antibody [N1N3] (NBP1-32462) diluted at 1:1000. The HRP-conjugated anti-rabbit IgG antibody was used to detect the primary antibody.



Publications

Meyers TA Preclinical Models of Dystrophic Cardiomyopathy and Therapies for the Dystrophic Heart Thesis (IF/IHC, Mouse)

Meyers TA, Heitzman JA, Krebsbach AM et al. Acute AT1R blockade prevents isoproterenol-induced injury in mdx hearts. *J. Mol. Cell. Cardiol.* 2019-01-19 [PMID: 30664850] (ICC/IF, Mouse)



Novus Biologicals USA

10730 E. Briarwood Avenue
Centennial, CO 80112
USA
Phone: 303.730.1950
Toll Free: 1.888.506.6887
Fax: 303.730.1966
nb-customerservice@bio-techne.com

Bio-Techne Canada

21 Canmotor Ave
Toronto, ON M8Z 4E6
Canada
Phone: 905.827.6400
Toll Free: 855.668.8722
Fax: 905.827.6402
canada.inquires@bio-techne.com

Bio-Techne Ltd

19 Barton Lane
Abingdon Science Park
Abingdon, OX14 3NB, United Kingdom
Phone: (44) (0) 1235 529449
Free Phone: 0800 37 34 15
Fax: (44) (0) 1235 533420
info.EMEA@bio-techne.com

General Contact Information

www.novusbio.com
Technical Support: nb-technical@bio-techne.com
Orders: nb-customerservice@bio-techne.com
General: novus@novusbio.com

Products Related to NBP1-32462

NBP2-33376H	Blue Marker Antibody (6F4-F6) [HRP]
HAF008	Goat anti-Rabbit IgG Secondary Antibody [HRP]
NB7160	Goat anti-Rabbit IgG (H+L) Secondary Antibody [HRP]
NBP2-24891	Rabbit IgG Isotype Control

Limitations

This product is for research use only and is not approved for use in humans or in clinical diagnosis. Primary Antibodies are guaranteed for 1 year from date of receipt.

For more information on our 100% guarantee, please visit www.novusbio.com/guarantee

Earn gift cards/discounts by submitting a review: www.novusbio.com/reviews/submit/NBP1-32462

Earn gift cards/discounts by submitting a publication using this product:
www.novusbio.com/publications

