

# Product Datasheet

## PAX8 Antibody - BSA Free NBP1-32440

Unit Size: 100 ul

Aliquot and store at -20C or -80C. Avoid freeze-thaw cycles.

[www.novusbio.com](http://www.novusbio.com)



[technical@novusbio.com](mailto:technical@novusbio.com)

**Reviews: 1** **Publications: 16**

Protocols, Publications, Related Products, Reviews, Research Tools and Images at:  
[www.novusbio.com/NBP1-32440](http://www.novusbio.com/NBP1-32440)

Updated 3/5/2026 v.20.1

Earn rewards for product  
reviews and publications.

Submit a publication at [www.novusbio.com/publications](http://www.novusbio.com/publications)

Submit a review at [www.novusbio.com/reviews/destination/NBP1-32440](http://www.novusbio.com/reviews/destination/NBP1-32440)



**NBP1-32440**

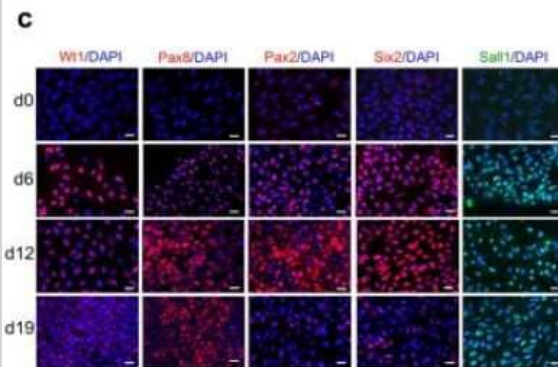
PAX8 Antibody - BSA Free

Product Information	
Unit Size	100 ul
Concentration	Concentrations vary lot to lot. See vial label for concentration. If unlisted please contact technical services.
Storage	Aliquot and store at -20C or -80C. Avoid freeze-thaw cycles.
Clonality	Polyclonal
Preservative	0.025% Proclin 300
Isotype	IgG
Purity	Antigen Affinity-purified
Buffer	PBS, 20% Glycerol
Target Molecular Weight	48 kDa
Product Description	
Host	Rabbit
Gene ID	7849
Gene Symbol	PAX8
Species	Human, Mouse, Rat, Canine
Reactivity Notes	Xenopus laevis (91%).
Immunogen	Recombinant protein encompassing a sequence within the center region of human PAX8. The exact sequence is proprietary.
Product Application Details	
Applications	Western Blot, Simple Western, Immunohistochemistry-Paraffin, Immunocytochemistry/ Immunofluorescence, Immunohistochemistry, Immunoprecipitation, Chromatin Immunoprecipitation (ChIP), Single Cell Western
Recommended Dilutions	Western Blot 1:5000-1:20000, Simple Western 1:10, Immunohistochemistry 1:100 - 1:1000, Immunocytochemistry/ Immunofluorescence 1:100 - 1:1000, Immunoprecipitation 1:500 - 1:1000, Immunohistochemistry-Paraffin 1:100 - 1:1000, Chromatin Immunoprecipitation (ChIP), Single Cell Western 50 ug/mL
Application Notes	In Simple Western only 10 - 15 uL of the recommended dilution is used per data point. See <a href="#">Simple Western Antibody Database</a> for Simple Western validation: Tested in Hek293 lysate 0.5 mg/mL, separated by Size, antibody dilution of 1:10, apparent MW was 60 kDa. Separated by Size-Wes, Sally Sue/Peggy Sue. SCW is validated using 786-O cells.

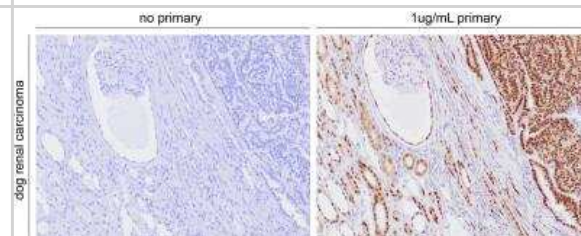


## Images

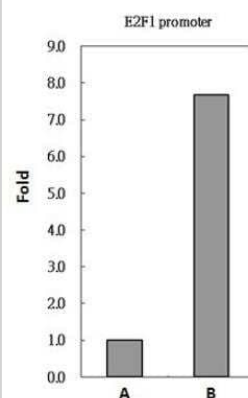
PAX8-Antibody-Immunocytochemistry-Immunofluorescence-NBP1-32440-img0020.jpg



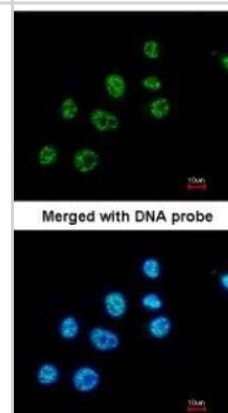
Immunohistochemistry-Paraffin: PAX8 Antibody [NBP1-32440] - Pax8 immunoreactivity in canine renal carcinoma. Primary antibody incubated with tissue for 1h at room temperature. IHC-P image submitted by a verified customer review.



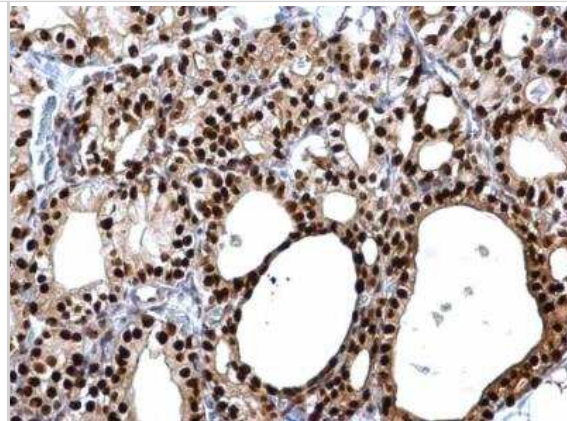
Chromatin Immunoprecipitation: PAX8 Antibody [NBP1-32440] - Sample: 293T whole cell lysate/extract A. 5 ug preimmune rabbit IgG, B. 5 ug of PAX8 antibody The precipitated DNA was detected by PCR with primer set targeting to E2F1 promoter.



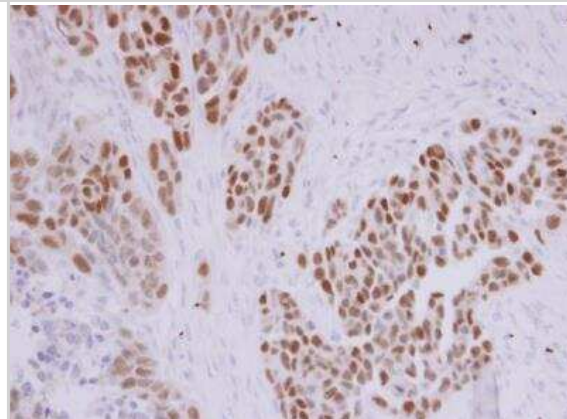
Immunocytochemistry/Immunofluorescence: PAX8 Antibody [NBP1-32440] - Paraformaldehyde-fixed A549, using antibody at 1:200 dilution.



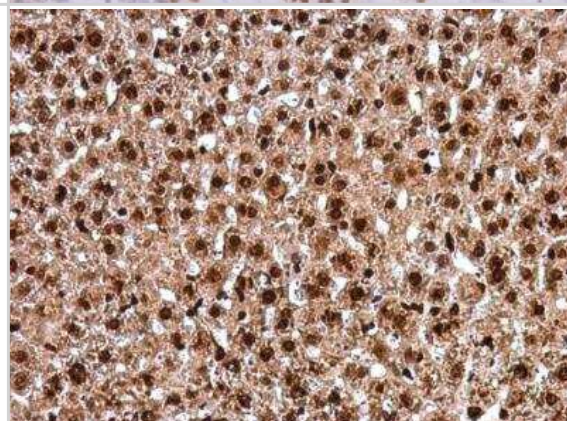
Immunohistochemistry-Paraffin: PAX8 Antibody [NBP1-32440] - Rat thyroid gland. PAX8 antibody dilution: 1:500. Antigen Retrieval: Trilogy™ (EDTA based, pH 8.0) buffer, 15min.



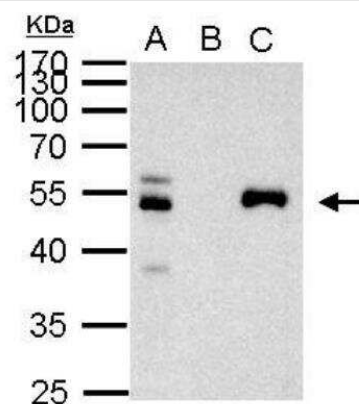
Immunohistochemistry-Paraffin: PAX8 Antibody [NBP1-32440] - DLD1 xenograft . PAX8 antibody diluted at 1:500. Antigen Retrieval: Trilogy™ (EDTA based, pH 8.0) buffer, 15min.



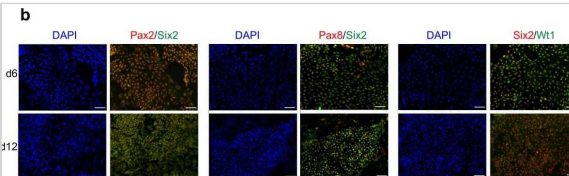
Immunohistochemistry-Paraffin: PAX8 Antibody [NBP1-32440] - Mouse liver. PAX8 antibody diluted at 1:500. Antigen Retrieval: Citrate buffer, pH 6.0, 15 min.



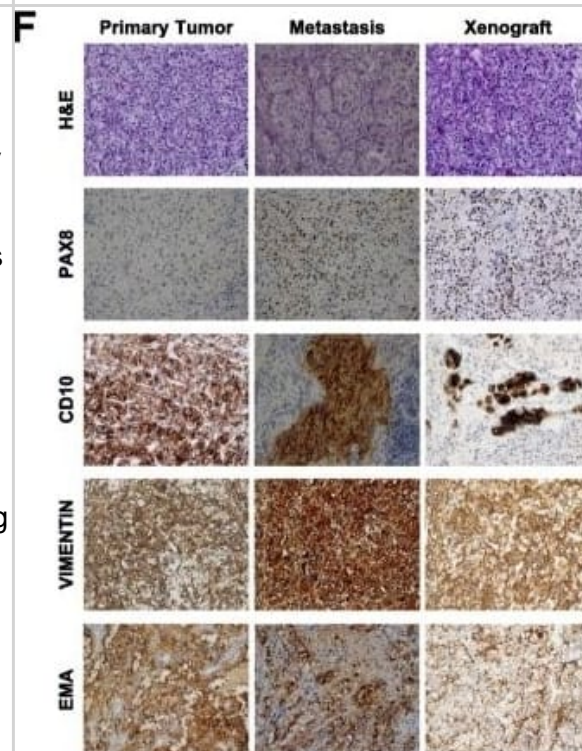
Immunoprecipitation: PAX8 Antibody [NBP1-32440] - Sample: 1000 ug 293T whole cell lysate/extract A. 40 ug 293T whole cell lysate/extract, B. Control with 2 ug of preimmune rabbit IgG, C. Immunoprecipitation of PAX8 protein by 2 ug of PAX8 antibody 10% SDS-PAGE gel.



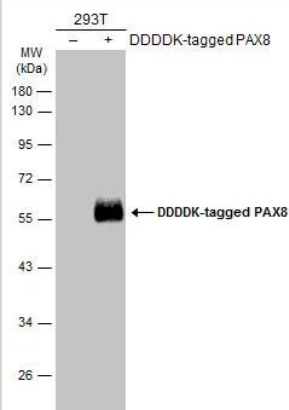
**Immunocytochemistry/ Immunofluorescence: PAX8 Antibody [NBP1-32440]** - Differentiation of human iPSC clone IV towards renal commitment. (a) Representative immunofluorescence images of co-staining for Lhx1/Osr1 up to day 6. (b) Images of co-staining of Pax2/Six2, Pax8/Six2 & Six2/Wt1 from day 6 to 12. (c) Expression of renal progenitor markers such as CD24, Claudin1 & GGT1 from day 0 to 19. Nuclei are stained with DAPI (blue). Scale bars: 50  $\mu$ m (a, b), 20  $\mu$ m (c). (d) Gene expression analysis for renal progenitor markers at different points in time. Image collected & cropped by CiteAb from the following publication (<https://www.nature.com/articles/srep08826>), licensed under a CC-BY license. Not internally tested by Novus Biologicals.



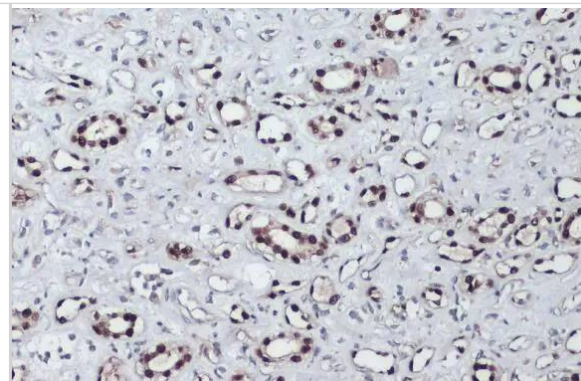
**Immunohistochemistry-Paraffin: PAX8 Antibody [NBP1-32440]** - PDX model establishment from ccRCC injection. a Hematoxylin & Eosin staining of human tumor engrafted in murine models. A representative image of kidney PDX reported. Microscope Nikon Eclipse E1000 10X & 20X (b) Graph reporting % of patients who engrafted when orthotopically injected in mice & distributed following grading (3 G1; 7 G2; 13 G3; 7 G4). Eight mice for each patient injected & all 18 tumors on 30 which evaluated as engrafted developed tumor masses on  $\geq$  of 6 mice. Tumors declared unable to engraft did not produce, at all, tumor masses. c Representative images ( $1 \times 0.63$ ) of PDXs excised 90 days after injection by Stereomicroscope (Olympus SZX10, XCX50). One representative image for G2, G3 & G4 types reported. d Representative images ( $1 \times 0.63$  &  $1.25$ ) of aberrant neo-angiogenesis formation in PDXs by Stereomicroscope (Olympus SZX10, XCX50 camera). e Hematoxylin & Eosin staining of PDXs versus parental primary patients. One representative tumor for each grade (G2, G3, G4) reported. Staining executed on OCT frozen samples. f Hematoxylin & Eosin & anti-PAX8, CD10, Vimentin & EMA staining reported on formalin-fixed & paraffin-embedded parental primary, metastatic tissues & PDXs. Primary, metastatic & PDX tissues obtained & shown from one representative patient. Microscope Nikon Eclipse 55i, magnification 20 $\times$ . g Histogram showing number of engrafting tumor populations evaluated over 30 injected patient samples & correlated w/ patient recurrence frequency calculated as development of metastases after surgery. Orange color represents recurrent ( $n = 7$ ) & metastatic ( $n = 3$ ) patients in engrafted group ( $n = 18$ ). Pink color represents recurrent patients ( $n = 2$ ) in non-engrafted group ( $n = 12$ ) for a total of 30 injected samples Image collected & cropped by CiteAb from following publication (<https://pubmed.ncbi.nlm.nih.gov/30185225>), licensed under a CC-BY license. Not internally tested by Novus Biologicals.



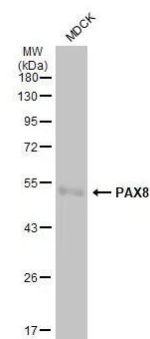
**Western Blot: PAX8 Antibody [NBP1-32440]** - Non-transfected (-) and transfected (+) 293T whole cell extracts (30  $\mu$ g) were separated by 10% SDS-PAGE, and the membrane was blotted with PAX8 antibody (NBP1-32440) diluted at 1:10000. The HRP-conjugated anti-rabbit IgG antibody was used to detect the primary antibody.



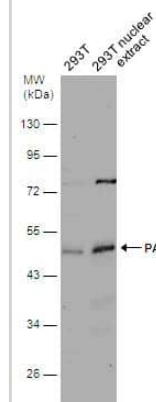
Immunohistochemistry-Paraffin: PAX8 Antibody [NBP1-32440] - PAX8 antibody detects PAX8 protein at nucleus by immunohistochemical analysis. Sample: Paraffin-embedded dog kidney. PAX8 stained by PAX8 antibody (NBP1-32440) diluted at 1:2000. Antigen Retrieval: Citrate buffer, pH 6.0, 15 min



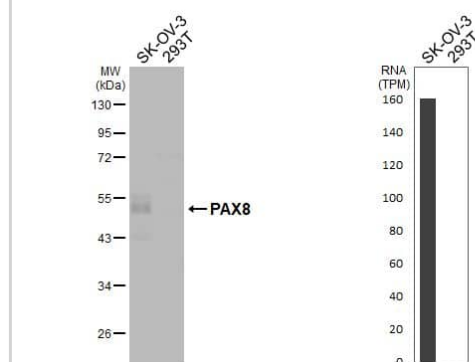
Western Blot: PAX8 Antibody [NBP1-32440] - Whole cell extract (30 ug) was separated by 10% SDS-PAGE, and the membrane was blotted with PAX8 antibody (NBP1-32440) diluted at 1:500. The HRP-conjugated anti-rabbit IgG antibody was used to detect the primary antibody.



293T whole cell and nuclear extracts (30 ug) were separated by 10% SDS-PAGE, and the membrane was blotted with PAX8 antibody (NBP1-32440) diluted at 1:1000.



Various whole cell extracts (30 ug) were separated by 10% SDS-PAGE, and the membrane was blotted with PAX8 antibody (NBP1-32440) diluted at 1:1000. The HRP-conjugated anti-rabbit IgG antibody was used to detect the primary antibody. Corresponding RNA expression data for the same cell lines are based on Human Protein Atlas program.



## Publications

Heath O, Berlato C, Maniati E et al. Chemotherapy Induces Tumor-Associated Macrophages that Aid Adaptive Immune Responses in Ovarian Cancer *Cancer Immunology Research* 2021-06-01 [PMID: 33839687] (Immunocytochemistry/ Immunofluorescence, Human)

Masaru Motojima, Masayuki Tanaka, Tsutomu Kume *Foxc1 and Foxc2 are indispensable for the maintenance of nephron and stromal progenitors in the developing kidney. Journal of cell science* 2022-09-30 [PMID: 36073617]

Kang HS, Grimm SA, Liao XH, Jetten AM *Role of GLIS3 in thyroid development and in the regulation of gene expression in thyroid specific Glis3KO mice Research square* 2023-07-07 [PMID: 37461635] (IHC, Mouse)

Lakshmi Varahan B *Investigating the effects of aspirin in high-grade serous ovarian carcinoma models in vitro Thesis* 2023-01-01 (Immunohistochemistry-Paraffin, Human)

Kang HS, Grimm SA, Jothi R et al. *GLIS3 regulates transcription of thyroid hormone biosynthetic genes in coordination with other thyroid transcription factors Cell & bioscience* 2023-02-15 [PMID: 36793061] (ChIP, Mouse)

Zhou M, Zhou S, Han K et al. *Th1 immune maturation effects of Nocardia rubra cell-wall skeleton via PI3K/Akt/PAX8 regulatory axis Science progress* 2022-04-27 [PMID: 35473474] (Chip Cytometry, Mouse)

Yoon HJ, Chung YS, Lee YJ Et al. *Cancer Patient Tissueoid with Self-Homing Nano-Targeting of Metabolic Inhibitor Advanced science (Weinheim, Baden-Wurttemberg, Germany)* 2021-10-18 [PMID: 34664430] (IF/IHC, ICC/IF, Human)

Malacrida B, Nichols S, Maniati E et al. *A human multi-cellular model shows how platelets drive production of diseased extracellular matrix and tissue invasion iScience* 2021-06-25 [PMID: 34189439]

Delaine-Smith R, Maniati E, Malacrida B et al. *Modelling TGF beta R and Hh pathway regulation of prognostic matrix molecules in ovarian cancer iScience* 2021-05-01 [PMID: 34189438] (ICC/IF, Human)

Wang J, Li N, Huang ZB et al. *HBx regulates transcription factor PAX8 stabilization to promote the progression of hepatocellular carcinoma Oncogene* 2019-08-07 [PMID: 31391550] (WB, Human)

di Martino S, De Luca G, Grassi L et al. *Renal cancer: new models and approach for personalizing therapy. J. Exp. Clin. Cancer Res.* 2018-09-05 [PMID: 30185225] (IHC-P, Human)

Adler EK, Corona RI, Lee JM et al. *The PAX8 cistrome in epithelial ovarian cancer. Oncotarget* 2017-11-27 [PMID: 29312534] (Chemotaxis)

More publications at <http://www.novusbio.com/NBP1-32440>



### **Novus Biologicals USA**

10730 E. Briarwood Avenue  
Centennial, CO 80112  
USA  
Phone: 303.730.1950  
Toll Free: 1.888.506.6887  
Fax: 303.730.1966  
nb-customerservice@bio-techne.com

### **Bio-Techne Canada**

21 Canmotor Ave  
Toronto, ON M8Z 4E6  
Canada  
Phone: 905.827.6400  
Toll Free: 855.668.8722  
Fax: 905.827.6402  
canada.inquires@bio-techne.com

### **Bio-Techne Ltd**

19 Barton Lane  
Abingdon Science Park  
Abingdon, OX14 3NB, United Kingdom  
Phone: (44) (0) 1235 529449  
Free Phone: 0800 37 34 15  
Fax: (44) (0) 1235 533420  
info.EMEA@bio-techne.com

### **General Contact Information**

www.novusbio.com  
Technical Support: nb-technical@bio-techne.com  
Orders: nb-customerservice@bio-techne.com  
General: novus@novusbio.com

### **Products Related to NBP1-32440**

---

HAF008	Goat anti-Rabbit IgG Secondary Antibody [HRP]
NB7160	Goat anti-Rabbit IgG (H+L) Secondary Antibody [HRP]
NBP2-24891	Rabbit IgG Isotype Control
NBP2-51907-0.05mg	Recombinant Human PAX8 His Protein

---

### **Limitations**

This product is for research use only and is not approved for use in humans or in clinical diagnosis. Primary Antibodies are guaranteed for 1 year from date of receipt.

For more information on our 100% guarantee, please visit [www.novusbio.com/guarantee](http://www.novusbio.com/guarantee)

Earn gift cards/discounts by submitting a review: [www.novusbio.com/reviews/submit/NBP1-32440](http://www.novusbio.com/reviews/submit/NBP1-32440)

Earn gift cards/discounts by submitting a publication using this product:  
[www.novusbio.com/publications](http://www.novusbio.com/publications)

