

Product Datasheet

Glucosylceramidase/GBA Antibody - BSA Free NBP1-32271

Unit Size: 0.1 ml

Aliquot and store at -20C or -80C. Avoid freeze-thaw cycles.

www.novusbio.com



technical@novusbio.com

Publications: 2

Protocols, Publications, Related Products, Reviews, Research Tools and Images at:
www.novusbio.com/NBP1-32271

Updated 9/25/2025 v.20.1

Earn rewards for product
reviews and publications.

Submit a publication at www.novusbio.com/publications

Submit a review at www.novusbio.com/reviews/destination/NBP1-32271



NBP1-32271**Glucosylceramidase/GBA Antibody - BSA Free**

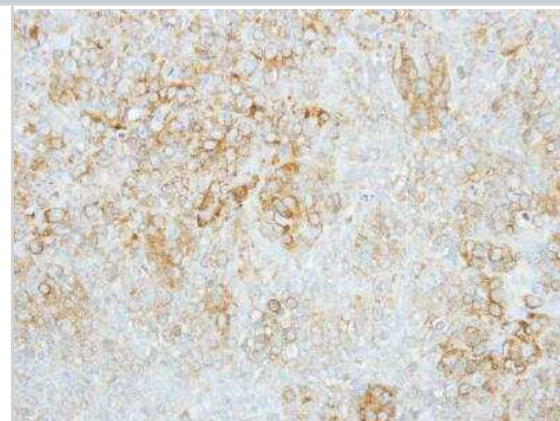
Product Information	
Unit Size	0.1 ml
Concentration	Concentrations vary lot to lot. See vial label for concentration. If unlisted please contact technical services.
Storage	Aliquot and store at -20C or -80C. Avoid freeze-thaw cycles.
Clonality	Polyclonal
Preservative	0.025% Proclin 300
Isotype	IgG
Purity	Antigen Affinity-purified
Buffer	PBS, 20% Glycerol
Target Molecular Weight	60 kDa

Product Description	
Description	Novus Biologicals Rabbit Glucosylceramidase/GBA Antibody - BSA Free (NBP1-32271) is a polyclonal antibody validated for use in IHC, WB and ICC/IF. Anti-Glucosylceramidase/GBA Antibody: Cited in 2 publications. All Novus Biologicals antibodies are covered by our 100% guarantee.
Host	Rabbit
Gene ID	2629
Gene Symbol	GBA1
Species	Human, Mouse, Zebrafish
Reactivity Notes	Zebrafish reactivity reported in scientific literature (PMID: 25326392). Mouse reactivity reported in scientific literature (PMID: 30927072).
Immunogen	Recombinant protein encompassing a sequence within the C-terminus region of human Glucosylceramidase/GBA. The exact sequence is proprietary.

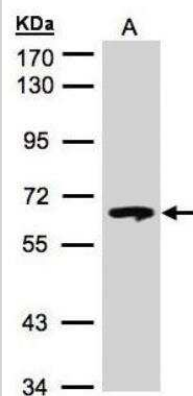
Product Application Details	
Applications	Western Blot, Immunohistochemistry-Paraffin, Immunocytochemistry/Immunofluorescence, Immunohistochemistry
Recommended Dilutions	Western Blot 1:500-1:3000, Immunohistochemistry 1:100-1:1000, Immunocytochemistry/ Immunofluorescence 1:100-1:1000, Immunohistochemistry-Paraffin 1:100-1:1000

Images

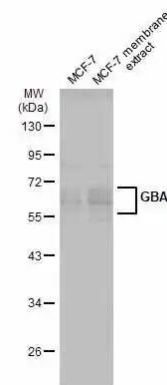
Immunohistochemistry-Paraffin: Glucosylceramidase/GBA Antibody [NBP1-32271] - Lung cancer, using GBA antibody at 1:100 dilution. Antigen Retrieval: Trilogy™ (EDTA based, pH 8.0) buffer, 15min.



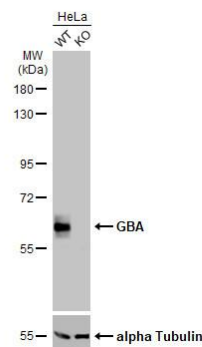
Western Blot: Glucosylceramidase/GBA Antibody [NBP1-32271] - Sample(30 ug of whole cell lysate) A:Hep G2 7.5% SDS PAGE diluted at 1:500



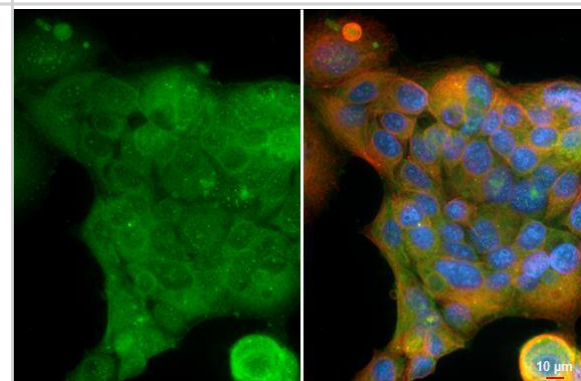
Western Blot: Glucosylceramidase/GBA Antibody [NBP1-32271] - MCF-7 whole cell and membrane extracts (30 ug) were separated by 10% SDS-PAGE, and the membrane was blotted with Glucosylceramidase/GBA antibody [C1C3] (NBP1-32271) diluted at 1:500. The HRP-conjugated anti-rabbit IgG antibody was used to detect the primary antibody.



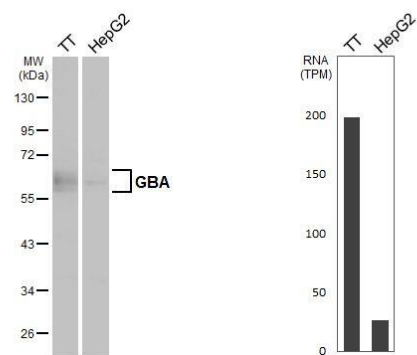
Western Blot: Glucosylceramidase/GBA Antibody [NBP1-32271] - Wild-type (WT) and GBA knockout (KO) HeLa cell extracts (30 ug) were separated by 7.5% SDS-PAGE, and the membrane was blotted with GBA antibody [C1C3] diluted at 1:500. The HRP-conjugated anti-rabbit IgG antibody was used to detect the primary antibody.



Glucosylceramidase/GBA antibody [C1C3] detects Glucosylceramidase/GBA protein by immunofluorescent analysis. Sample: MCF-7 cells were fixed in ice-cold MeOH for 5 min. Green: Glucosylceramidase/GBA stained by Glucosylceramidase/GBA antibody [C1C3] (NBP1-32271) diluted at 1:500. Red: alpha Tubulin, a cytoskeleton marker, stained by alpha Tubulin antibody [GT114] diluted at 1:1000. Blue: Fluoroshield with DAPI



Various whole cell extracts (30 ug) were separated by 10% SDS-PAGE, and the membrane was blotted with Glucosylceramidase/GBA antibody [C1C3] (NBP1-32271) diluted at 1:1000. The HRP-conjugated anti-rabbit IgG antibody was used to detect the primary antibody. Corresponding RNA expression data for the same cell lines are based on Human Protein Atlas program.



Publications

Bieri G, Brahic M, Bousset L et al. LRRK2 modifies alpha-syn pathology and spread in mouse models and human neurons bioRxiv 2019-03-29 [PMID: 30927072] (WB, Mouse)

Zancan I, Bellesso S, Costa R et al. Glucocerebrosidase deficiency in zebrafish affects primary bone ossification through increased oxidative stress and reduced Wnt/B-catenin signaling. Hum. Mol. Genet. 2014-10-17 [PMID: 25326392] (ICC/IF, WB, Zebrafish, Human)



Novus Biologicals USA

10730 E. Briarwood Avenue
Centennial, CO 80112
USA
Phone: 303.730.1950
Toll Free: 1.888.506.6887
Fax: 303.730.1966
nb-customerservice@bio-techne.com

Bio-Techne Canada

21 Canmotor Ave
Toronto, ON M8Z 4E6
Canada
Phone: 905.827.6400
Toll Free: 855.668.8722
Fax: 905.827.6402
canada.inquires@bio-techne.com

Bio-Techne Ltd

19 Barton Lane
Abingdon Science Park
Abingdon, OX14 3NB, United Kingdom
Phone: (44) (0) 1235 529449
Free Phone: 0800 37 34 15
Fax: (44) (0) 1235 533420
info.EMEA@bio-techne.com

General Contact Information

www.novusbio.com
Technical Support: nb-technical@bio-techne.com
Orders: nb-customerservice@bio-techne.com
General: novus@novusbio.com

Products Related to NBP1-32271

NBP2-33376H	Blue Marker Antibody (6F4-F6) [HRP]
HAF008	Goat anti-Rabbit IgG Secondary Antibody [HRP]
NB7160	Goat anti-Rabbit IgG (H+L) Secondary Antibody [HRP]
NBP2-24891	Rabbit IgG Isotype Control

Limitations

This product is for research use only and is not approved for use in humans or in clinical diagnosis. Primary Antibodies are guaranteed for 1 year from date of receipt.

For more information on our 100% guarantee, please visit www.novusbio.com/guarantee

Earn gift cards/discounts by submitting a review: www.novusbio.com/reviews/submit/NBP1-32271

Earn gift cards/discounts by submitting a publication using this product:
www.novusbio.com/publications

