

Product Datasheet

CPNE1 Antibody - BSA Free

NBP1-32194

Unit Size: 0.1 ml

Aliquot and store at -20C or -80C. Avoid freeze-thaw cycles.

www.novusbio.com



technical@novusbio.com

Publications: 1

Protocols, Publications, Related Products, Reviews, Research Tools and Images at:
www.novusbio.com/NBP1-32194

Updated 9/25/2025 v.20.1

Earn rewards for product
reviews and publications.

Submit a publication at www.novusbio.com/publications

Submit a review at www.novusbio.com/reviews/destination/NBP1-32194



NBP1-32194

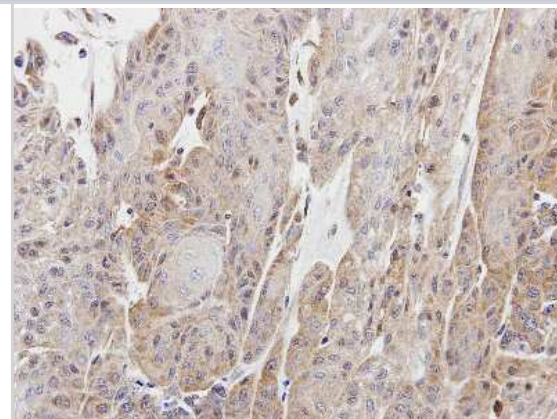
CPNE1 Antibody - BSA Free

Product Information	
Unit Size	0.1 ml
Concentration	Concentrations vary lot to lot. See vial label for concentration. If unlisted please contact technical services.
Storage	Aliquot and store at -20C or -80C. Avoid freeze-thaw cycles.
Clonality	Polyclonal
Preservative	0.01% Thimerosal
Isotype	IgG
Purity	Antigen Affinity-purified
Buffer	0.1M Tris, 0.1M Glycine, 10% Glycerol
Target Molecular Weight	59 kDa
Product Description	
Description	Novus Biologicals Rabbit CPNE1 Antibody - BSA Free (NBP1-32194) is a polyclonal antibody validated for use in IHC and WB. Anti-CPNE1 Antibody: Cited in 1 publication. All Novus Biologicals antibodies are covered by our 100% guarantee.
Host	Rabbit
Gene ID	8904
Gene Symbol	CPNE1
Species	Human
Immunogen	Recombinant protein encompassing a sequence within the center region of human CPNE1. The exact sequence is proprietary.
Product Application Details	
Applications	Western Blot, Immunohistochemistry-Paraffin, Immunohistochemistry
Recommended Dilutions	Western Blot 1:500-1:3000, Immunohistochemistry 1:100-1:1000, Immunohistochemistry-Paraffin 1:100-1:1000



Images

Immunohistochemistry-Paraffin: CPNE1 Antibody [NBP1-32194] - Paraffin-embedded Cal27 xenograft, using antibody at 1:100 dilution.

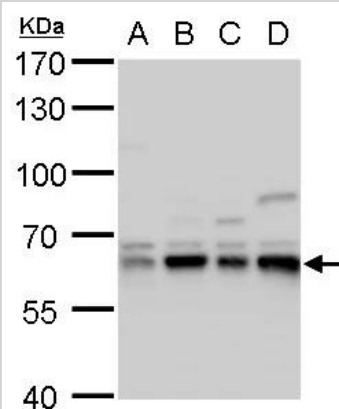


Western Blot: CPNE1 Antibody [NBP1-32194] - Copine I antibody [N3C3] detects Copine I protein by western blot analysis.

- A. 30 ug 293T whole cell lysate/extract
- B. 30 ug A431 whole cell lysate/extract
- C. 30 ug HeLa whole cell lysate/extract
- D. 30 ug HepG2 whole cell lysate/extract

7.5 % SDS-PAGE

Copine I antibody [N3C3] (NBP1-32194) dilution: 1:500



Publications

Talaat IM, Abu-Gharbieh E, Hussein A et al. Prognostic Value of Copine 1 in Patients With Renal Cell Carcinoma Anticancer research 2022-01-01 [PMID: 34969745]



Novus Biologicals USA

10730 E. Briarwood Avenue
Centennial, CO 80112
USA
Phone: 303.730.1950
Toll Free: 1.888.506.6887
Fax: 303.730.1966
nb-customerservice@bio-techne.com

Bio-Techne Canada

21 Canmotor Ave
Toronto, ON M8Z 4E6
Canada
Phone: 905.827.6400
Toll Free: 855.668.8722
Fax: 905.827.6402
canada.inquires@bio-techne.com

Bio-Techne Ltd

19 Barton Lane
Abingdon Science Park
Abingdon, OX14 3NB, United Kingdom
Phone: (44) (0) 1235 529449
Free Phone: 0800 37 34 15
Fax: (44) (0) 1235 533420
info.EMEA@bio-techne.com

General Contact Information

www.novusbio.com
Technical Support: nb-technical@bio-techne.com
Orders: nb-customerservice@bio-techne.com
General: novus@novusbio.com

Products Related to NBP1-32194

NBP2-33376H	Blue Marker Antibody (6F4-F6) [HRP]
HAF008	Goat anti-Rabbit IgG Secondary Antibody [HRP]
NB7160	Goat anti-Rabbit IgG (H+L) Secondary Antibody [HRP]
NBP2-24891	Rabbit IgG Isotype Control

Limitations

This product is for research use only and is not approved for use in humans or in clinical diagnosis. Primary Antibodies are guaranteed for 1 year from date of receipt.

For more information on our 100% guarantee, please visit www.novusbio.com/guarantee

Earn gift cards/discounts by submitting a review: www.novusbio.com/reviews/submit/NBP1-32194

Earn gift cards/discounts by submitting a publication using this product:
www.novusbio.com/publications

