

Product Datasheet

SHP-1 Antibody - BSA Free

NBP1-32179

Unit Size: 0.1 ml

Aliquot and store at -20C or -80C. Avoid freeze-thaw cycles.

www.novusbio.com



technical@novusbio.com

Protocols, Publications, Related Products, Reviews, Research Tools and Images at:
www.novusbio.com/NBP1-32179

Updated 9/25/2025 v.20.1

Earn rewards for product
reviews and publications.

Submit a publication at www.novusbio.com/publications

Submit a review at www.novusbio.com/reviews/destination/NBP1-32179



NBP1-32179

SHP-1 Antibody - BSA Free

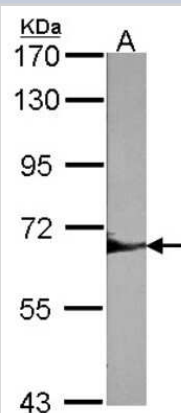
Product Information	
Unit Size	0.1 ml
Concentration	Concentrations vary lot to lot. See vial label for concentration. If unlisted please contact technical services.
Storage	Aliquot and store at -20C or -80C. Avoid freeze-thaw cycles.
Clonality	Polyclonal
Preservative	0.025% Proclin 300
Isotype	IgG
Purity	Antigen Affinity-purified
Buffer	PBS, 20% Glycerol
Target Molecular Weight	68 kDa

Product Description	
Description	Novus Biologicals Rabbit SHP-1 Antibody - BSA Free (NBP1-32179) is a polyclonal antibody validated for use in IHC, WB and IP. All Novus Biologicals antibodies are covered by our 100% guarantee.
Host	Rabbit
Gene ID	5777
Gene Symbol	PTPN6
Species	Human, Mouse, Rat
Reactivity Notes	Chicken (80%).
Immunogen	Recombinant protein encompassing a sequence within the center region of human SHP-1. The exact sequence is proprietary.

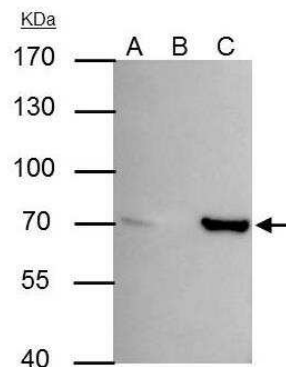
Product Application Details	
Applications	Western Blot, Immunohistochemistry-Paraffin, Immunohistochemistry, Immunohistochemistry-Frozen, Immunoprecipitation
Recommended Dilutions	Western Blot 1:500-1:3000, Immunohistochemistry 1:100-1:1000, Immunoprecipitation 1:100-1:500, Immunohistochemistry-Paraffin 1:100-1:1000, Immunohistochemistry-Frozen

Images

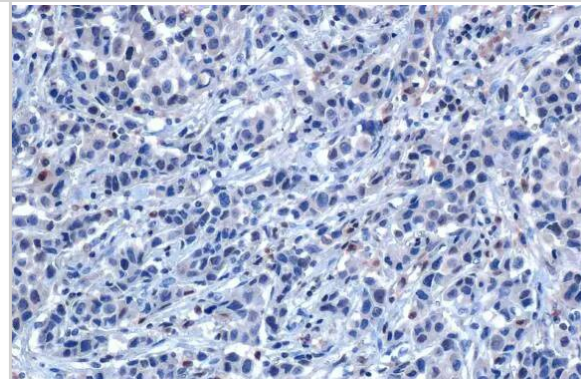
Western Blot: PTPN6 Antibody [NBP1-32179] - Sample (30 ug of whole cell lysate) A:NIH-3T37C 5% SDS PAGE; antibody diluted at 1:1000.



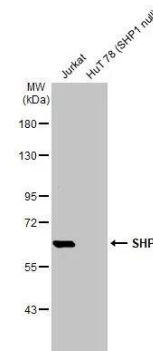
Immunoprecipitation: PTPN6 Antibody [NBP1-32179] - HeLa whole cell lysate/extract A : 30 ug whole cell lysate/extract of SHP1 protein expressing HeLa cells B : Control with 3 ug of pre-immune rabbit IgG C : Immunoprecipitation of SHP1 by 3 ug of SHP1 7.5% SDS-PAGE The immunoprecipitated SHP1 protein was detected by SHP1 antibody diluted at 1 : 1000. EasyBlot anti-rabbit IgG (HRP) was used as a secondary reagent.



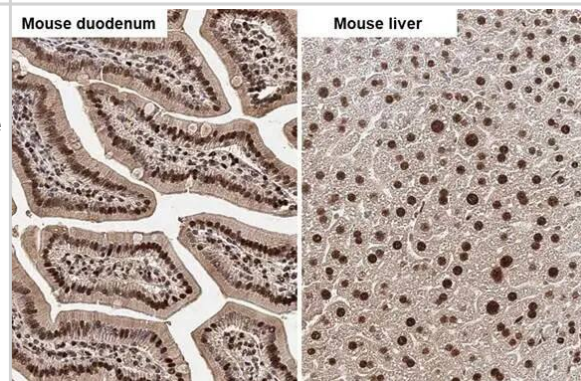
Immunohistochemistry-Paraffin: SHP-1 Antibody [NBP1-32179] - SHP-1 antibody detects SHP-1 protein at cytoplasm and nucleus by immunohistochemical analysis. Sample: Paraffin-embedded human breast carcinoma. SHP-1 stained by SHP-1 antibody (NBP1-32179) diluted at 1:500. Antigen Retrieval: Citrate buffer, pH 6.0, 15 min



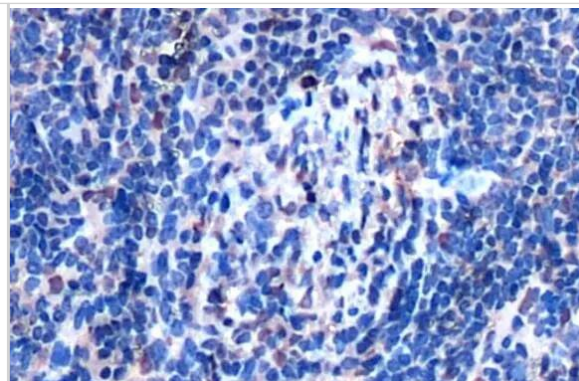
Western Blot: SHP-1 Antibody [NBP1-32179] - Various whole cell extracts (10 ug) were separated by 7.5% SDS-PAGE, and the membrane was blotted with SHP-1 antibody diluted at 1:1000. The HRP-conjugated anti-rabbit IgG antibody was used to detect the primary antibody.



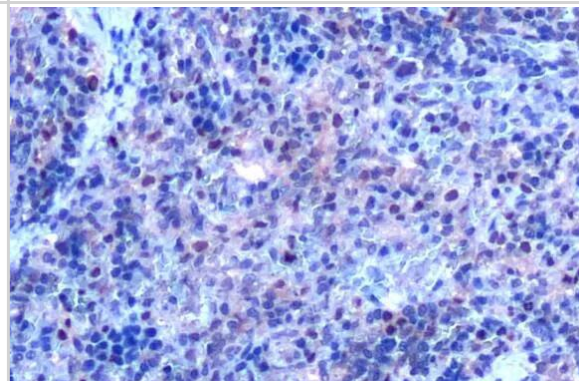
Immunohistochemistry-Paraffin: SHP-1 Antibody [NBP1-32179] - SHP-1 antibody detects SHP-1 protein by immunohistochemical analysis. Sample: Paraffin-embedded mouse tissues. SHP-1 stained by SHP-1 antibody (NBP1-32179) diluted at 1:500. Antigen Retrieval: Citrate buffer, pH 6.0, 15 min



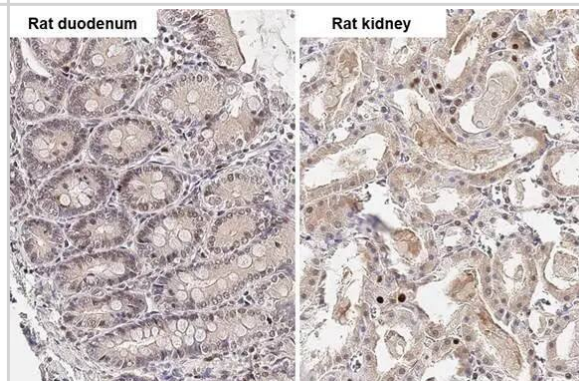
Immunohistochemistry-Paraffin: SHP-1 Antibody [NBP1-32179] - SHP-1 antibody detects SHP-1 protein at cytoplasm and nucleus by immunohistochemical analysis. Sample: Paraffin-embedded mouse liver. SHP-1 stained by SHP-1 antibody (NBP1-32179) diluted at 1:500. Antigen Retrieval: Citrate buffer, pH 6.0, 15 min



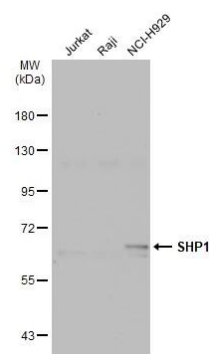
Immunohistochemistry-Paraffin: SHP-1 Antibody [NBP1-32179] - SHP-1 antibody detects SHP-1 protein at cytoplasm and nucleus by immunohistochemical analysis. Sample: Paraffin-embedded rat liver. SHP-1 stained by SHP-1 antibody (NBP1-32179) diluted at 1:500. Antigen Retrieval: Citrate buffer, pH 6.0, 15 min



Immunohistochemistry-Paraffin: SHP-1 Antibody [NBP1-32179] - SHP-1 antibody detects SHP-1 protein by immunohistochemical analysis. Sample: Paraffin-embedded rat tissues. SHP-1 stained by SHP-1 antibody (NBP1-32179) diluted at 1:500. Antigen Retrieval: Citrate buffer, pH 6.0, 15 min



Western Blot: SHP-1 Antibody [NBP1-32179] - Various whole cell extracts (30 ug) were separated by 7.5% SDS-PAGE, and the membrane was blotted with SHP-1 antibody (NBP1-32179) diluted at 1:1000. The HRP-conjugated anti-rabbit IgG antibody was used to detect the primary antibody.





Novus Biologicals USA

10730 E. Briarwood Avenue
Centennial, CO 80112
USA
Phone: 303.730.1950
Toll Free: 1.888.506.6887
Fax: 303.730.1966
nb-customerservice@bio-techne.com

Bio-Techne Canada

21 Canmotor Ave
Toronto, ON M8Z 4E6
Canada
Phone: 905.827.6400
Toll Free: 855.668.8722
Fax: 905.827.6402
canada.inquires@bio-techne.com

Bio-Techne Ltd

19 Barton Lane
Abingdon Science Park
Abingdon, OX14 3NB, United Kingdom
Phone: (44) (0) 1235 529449
Free Phone: 0800 37 34 15
Fax: (44) (0) 1235 533420
info.EMEA@bio-techne.com

General Contact Information

www.novusbio.com
Technical Support: nb-technical@bio-techne.com
Orders: nb-customerservice@bio-techne.com
General: novus@novusbio.com

Products Related to NBP1-32179

NBP2-33376H	Blue Marker Antibody (6F4-F6) [HRP]
HAF008	Goat anti-Rabbit IgG Secondary Antibody [HRP]
NB7160	Goat anti-Rabbit IgG (H+L) Secondary Antibody [HRP]
NBP2-24891	Rabbit IgG Isotype Control

Limitations

This product is for research use only and is not approved for use in humans or in clinical diagnosis. Primary Antibodies are guaranteed for 1 year from date of receipt.

For more information on our 100% guarantee, please visit www.novusbio.com/guarantee

Earn gift cards/discounts by submitting a review: www.novusbio.com/reviews/submit/NBP1-32179

Earn gift cards/discounts by submitting a publication using this product:
www.novusbio.com/publications

