

Product Datasheet

Proapoptotic Caspase Adaptor Protein Antibody NBP1-31619

Unit Size: 0.1 ml

Aliquot and store at -20C or -80C. Avoid freeze-thaw cycles.

www.novusbio.com



technical@novusbio.com

Protocols, Publications, Related Products, Reviews, Research Tools and Images at:
www.novusbio.com/NBP1-31619

Updated 1/12/2026 v.20.1

Earn rewards for product
reviews and publications.

Submit a publication at www.novusbio.com/publications

Submit a review at www.novusbio.com/reviews/destination/NBP1-31619



NBP1-31619

Proapoptotic Caspase Adaptor Protein Antibody

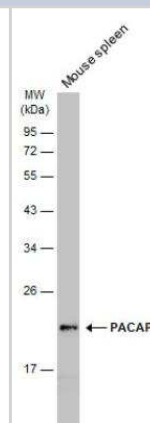
Product Information	
Unit Size	0.1 ml
Concentration	Concentrations vary lot to lot. See vial label for concentration. If unlisted please contact technical services.
Storage	Aliquot and store at -20C or -80C. Avoid freeze-thaw cycles.
Clonality	Polyclonal
Preservative	0.025% Proclin 300
Isotype	IgG
Purity	Antigen Affinity-purified
Buffer	PBS, 1% BSA, 20% Glycerol
Target Molecular Weight	21 kDa

Product Description	
Description	Novus Biologicals Rabbit Proapoptotic Caspase Adaptor Protein Antibody (NBP1-31619) is a polyclonal antibody validated for use in IHC, WB and ICC/IF. All Novus Biologicals antibodies are covered by our 100% guarantee.
Host	Rabbit
Gene ID	51237
Gene Symbol	MZB1
Species	Human, Mouse, Rat
Immunogen	Recombinant protein encompassing a sequence within the center region of human Proapoptotic Caspase Adaptor Protein. The exact sequence is proprietary.

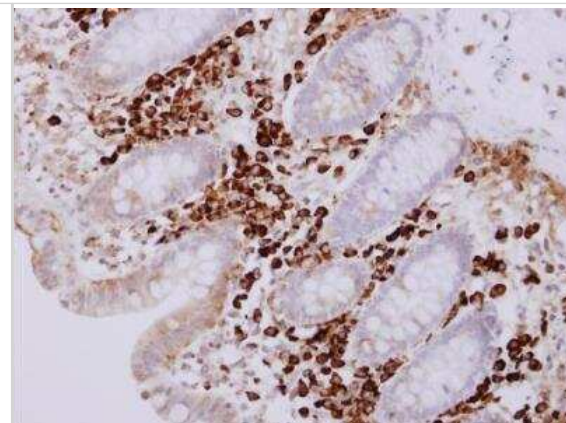
Product Application Details	
Applications	Western Blot, Immunohistochemistry-Paraffin, Immunocytochemistry/Immunofluorescence, Immunohistochemistry, Immunohistochemistry-Frozen
Recommended Dilutions	Western Blot 1:500-1:3000, Immunohistochemistry 1:100-1:1000, Immunocytochemistry/ Immunofluorescence Assay dependent, Immunohistochemistry-Paraffin 1:100-1:1000, Immunohistochemistry-Frozen 1:100-1:1000

Images

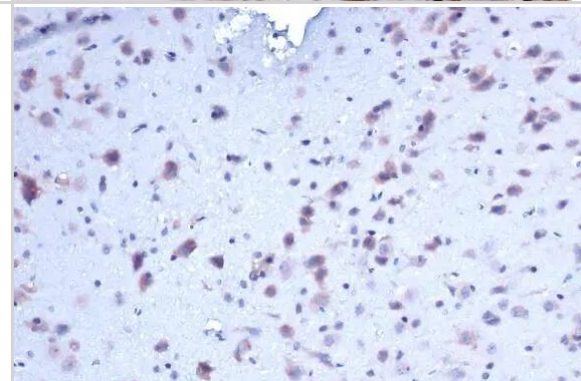
Western Blot: Proapoptotic Caspase Adaptor Protein Antibody [NBP1-31619] - Mouse tissue extract (50 ug) was separated by 12% SDS-PAGE, and the membrane was blotted with PACAP antibody [N1C3] diluted at 1:500. The HRP-conjugated anti-rabbit IgG antibody (NBP2-19301) was used to detect the primary antibody, and the signal was developed with Trident ECL plus-Enhanced.



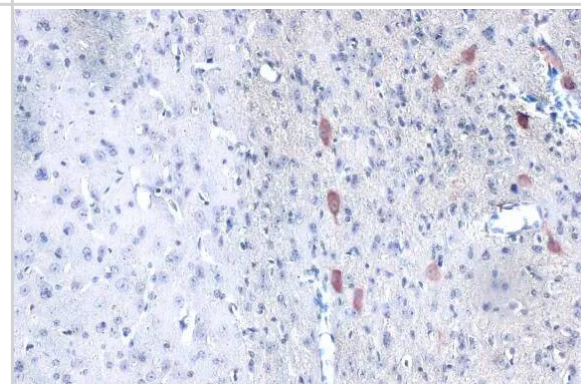
Immunohistochemistry-Paraffin: Proapoptotic Caspase Adaptor Protein Antibody [NBP1-31619] - Paraffin-embedded normal colon mucosa with lymphocyte. PACAP antibody [N1C3] dilution: 1:500.



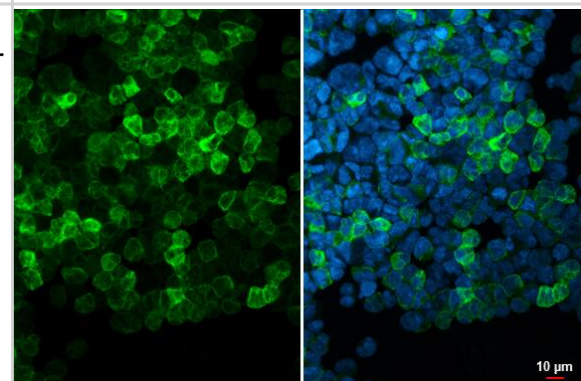
Immunohistochemistry-Paraffin: Proapoptotic Caspase Adaptor Protein Antibody [NBP1-31619] - Proapoptotic Caspase Adaptor Protein antibody [N1C3] detects Proapoptotic Caspase Adaptor Protein protein at cytoplasm by immunohistochemical analysis. Sample: Paraffin-embedded rat brain. Proapoptotic Caspase Adaptor Protein stained by Proapoptotic Caspase Adaptor Protein antibody [N1C3] (NBP1-31619) diluted at 1:200. Antigen Retrieval: Citrate buffer, pH 6.0, 15 min



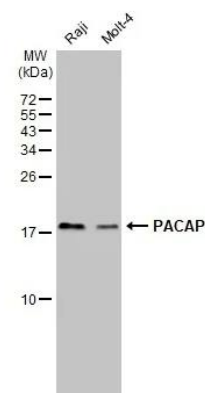
Immunohistochemistry-Paraffin: Proapoptotic Caspase Adaptor Protein Antibody [NBP1-31619] - Proapoptotic Caspase Adaptor Protein antibody [N1C3] detects Proapoptotic Caspase Adaptor Protein protein at cytoplasm by immunohistochemical analysis. Sample: Paraffin-embedded mouse brain. Proapoptotic Caspase Adaptor Protein stained by Proapoptotic Caspase Adaptor Protein antibody [N1C3] (NBP1-31619) diluted at 1:200. Antigen Retrieval: Citrate buffer, pH 6.0, 15 min



Immunocytochemistry/ Immunofluorescence: Proapoptotic Caspase Adaptor Protein Antibody [NBP1-31619] - Proapoptotic Caspase Adaptor Protein antibody [N1C3] detects Proapoptotic Caspase Adaptor Protein protein at cytoplasm by immunofluorescent analysis. Sample: Raji cells were fixed in 4% paraformaldehyde at RT for 15 min. Green: Proapoptotic Caspase Adaptor Protein stained by Proapoptotic Caspase Adaptor Protein antibody [N1C3] (NBP1-31619) diluted at 1:500. Blue: Fluoroshield with DAPI .



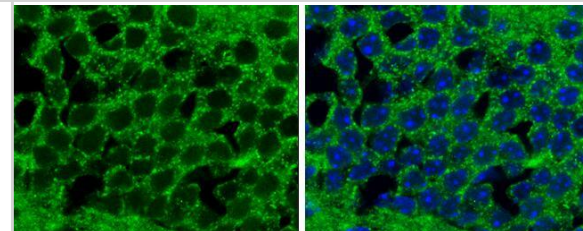
Western Blot: Proapoptotic Caspase Adaptor Protein Antibody [NBP1-31619] - Various whole cell extracts (30 μ g) were separated by 15% SDS-PAGE, and the membrane was blotted with PACAP antibody [N1C3] diluted at 1:1000. The HRP-conjugated anti-rabbit IgG antibody (NBP2-19301) was used to detect the primary antibody.



Proapoptotic Caspase Adaptor Protein antibody [N1C3] detects Proapoptotic Caspase Adaptor Protein protein at cytoplasm in mouse brain by immunohistochemical analysis.

Sample: Frozen section of mouse brain.

Proapoptotic Caspase Adaptor Protein antibody [N1C3] (NBP1-31619) diluted at 1:500.





Novus Biologicals USA

10730 E. Briarwood Avenue
Centennial, CO 80112
USA
Phone: 303.730.1950
Toll Free: 1.888.506.6887
Fax: 303.730.1966
nb-customerservice@bio-techne.com

Bio-Techne Canada

21 Canmotor Ave
Toronto, ON M8Z 4E6
Canada
Phone: 905.827.6400
Toll Free: 855.668.8722
Fax: 905.827.6402
canada.inquires@bio-techne.com

Bio-Techne Ltd

19 Barton Lane
Abingdon Science Park
Abingdon, OX14 3NB, United Kingdom
Phone: (44) (0) 1235 529449
Free Phone: 0800 37 34 15
Fax: (44) (0) 1235 533420
info.EMEA@bio-techne.com

General Contact Information

www.novusbio.com
Technical Support: nb-technical@bio-techne.com
Orders: nb-customerservice@bio-techne.com
General: novus@novusbio.com

Products Related to NBP1-31619

NBP2-33376H	Blue Marker Antibody (6F4-F6) [HRP]
HAF008	Goat anti-Rabbit IgG Secondary Antibody [HRP]
NB7160	Goat anti-Rabbit IgG (H+L) Secondary Antibody [HRP]
NBP2-24891	Rabbit IgG Isotype Control

Limitations

This product is for research use only and is not approved for use in humans or in clinical diagnosis. Primary Antibodies are guaranteed for 1 year from date of receipt.

For more information on our 100% guarantee, please visit www.novusbio.com/guarantee

Earn gift cards/discounts by submitting a review: www.novusbio.com/reviews/submit/NBP1-31619

Earn gift cards/discounts by submitting a publication using this product:
www.novusbio.com/publications

