

# Product Datasheet

## Triosephosphate isomerase Antibody NBP1-31470

Unit Size: 100 ul

Aliquot and store at -20C or -80C. Avoid freeze-thaw cycles.

[www.novusbio.com](http://www.novusbio.com)



[technical@novusbio.com](mailto:technical@novusbio.com)

**Reviews: 1 Publications: 11**

Protocols, Publications, Related Products, Reviews, Research Tools and Images at:  
[www.novusbio.com/NBP1-31470](http://www.novusbio.com/NBP1-31470)

Updated 9/25/2025 v.20.1

**Earn rewards for product  
reviews and publications.**

Submit a publication at [www.novusbio.com/publications](http://www.novusbio.com/publications)

Submit a review at [www.novusbio.com/reviews/destination/NBP1-31470](http://www.novusbio.com/reviews/destination/NBP1-31470)



**NBP1-31470**

## Triosephosphate isomerase Antibody

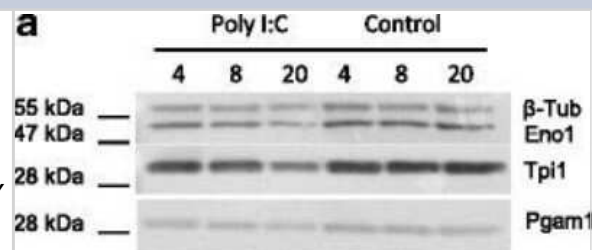
Product Information	
<b>Unit Size</b>	100 ul
<b>Concentration</b>	Concentrations vary lot to lot. See vial label for concentration. If unlisted please contact technical services.
<b>Storage</b>	Aliquot and store at -20C or -80C. Avoid freeze-thaw cycles.
<b>Clonality</b>	Polyclonal
<b>Preservative</b>	0.025% Proclin 300
<b>Isotype</b>	IgG
<b>Purity</b>	Antigen Affinity-purified
<b>Buffer</b>	PBS, 1% BSA, 20% Glycerol
<b>Target Molecular Weight</b>	31 kDa

Product Description	
<b>Description</b>	Novus Biologicals Rabbit Triosephosphate isomerase Antibody (NBP1-31470) is a polyclonal antibody validated for use in IHC, WB, ELISA, Flow and ICC/IF. Anti-Triosephosphate isomerase Antibody: Cited in 9 publications. All Novus Biologicals antibodies are covered by our 100% guarantee.
<b>Host</b>	Rabbit
<b>Gene ID</b>	7167
<b>Gene Symbol</b>	TPI1
<b>Species</b>	Human, Mouse, Rat, Bovine
<b>Reactivity Notes</b>	Bovine reactivity reported in scientific literature (PMID: 29892502).
<b>Immunogen</b>	Carrier-protein conjugated synthetic peptide encompassing a sequence within the C-terminus region of human Triosephosphate isomerase. The exact sequence is proprietary.

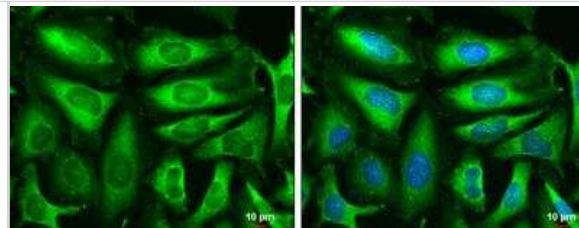
Product Application Details	
<b>Applications</b>	Western Blot, Immunohistochemistry-Paraffin, ELISA, Flow Cytometry, Immunocytochemistry/ Immunofluorescence, Immunohistochemistry
<b>Recommended Dilutions</b>	Western Blot 1:500-1:3000, Flow Cytometry Reported in scientific literature (PMID: 22262862), ELISA Assay dependent, Immunohistochemistry 1:100-1:1000, Immunocytochemistry/ Immunofluorescence 1:100-1:1000, Immunohistochemistry-Paraffin 1:100-1:1000

**Images**

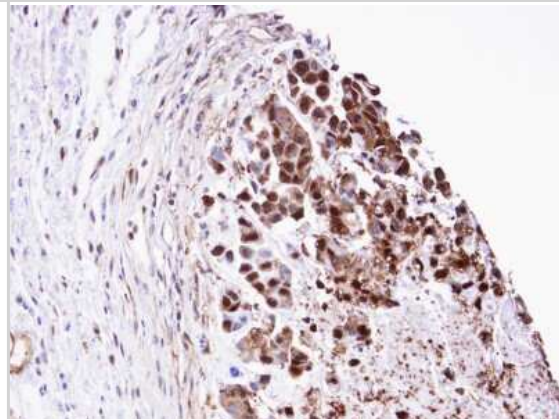
Western Blot: Triosephosphate isomerase Antibody [NBP1-31470] - Immunodetection of glycolytic enzymes within bat and human cells. Immunodetection of Eno1, Tpi1, Pgam1 and beta2-Tub (load control) in Poly I:C transfected and Control PaKiT03 cells at 4, 8 and 20 hpt. Image collected and cropped by CiteAb from the following publication (<https://www.proteomesci.com/content/13/1/25>), licensed under a CC-BY license.



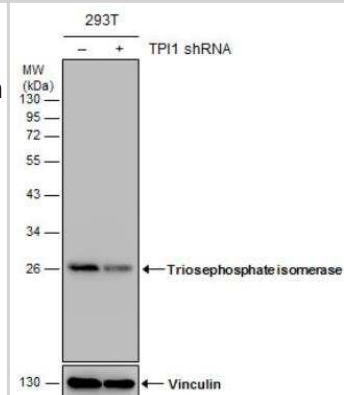
Immunocytochemistry/Immunofluorescence: Triosephosphate isomerase Antibody [NBP1-31470] - HeLa cells were fixed in 4% paraformaldehyde at RT for 15 min. Green: Triosephosphate isomerase stained by Triosephosphate isomerase antibody [C2C3], C-term diluted at 1:500. Blue: Hoechst 33342 staining. Scale bar= 10um.



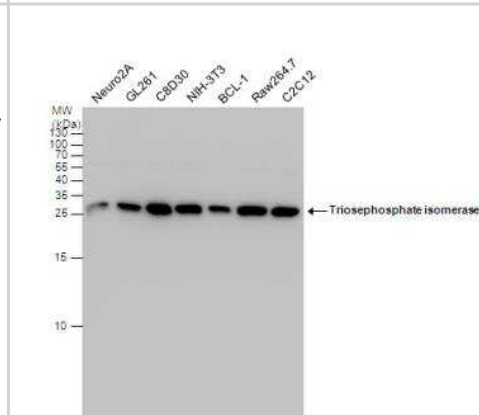
Immunohistochemistry-Paraffin: Triosephosphate isomerase Antibody [NBP1-31470] - Paraffin-embedded SNU-16 xenograft, using antibody at 1:100 dilution.



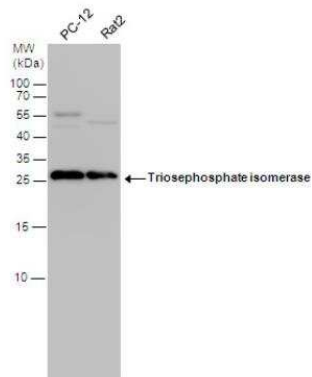
Western Blot: Triosephosphate isomerase Antibody [NBP1-31470] - Non-transfected (-) and transfected (+) 293T whole cell extracts (30 ug) were separated by 12% SDS-PAGE, and the membrane was blotted with Triosephosphate isomerase antibody [C2C3], C-term. The HRP-conjugated anti-rabbit IgG antibody was used to detect the primary antibody.



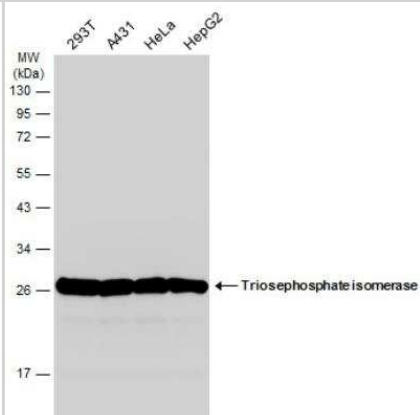
Western Blot: Triosephosphate isomerase Antibody [NBP1-31470] - Various whole cell extracts (30 ug) were separated by 15% SDS-PAGE, and the membrane was blotted with Triosephosphate isomerase antibody diluted by 1:1000. The HRP-conjugated anti-rabbit IgG antibody (NBP2-19301) was used to detect the primary antibody.



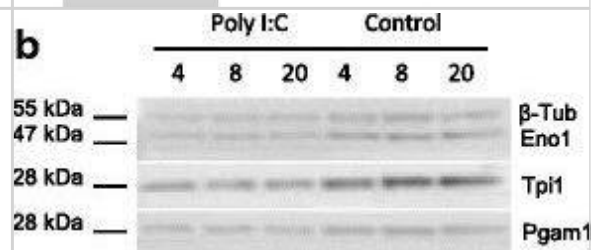
Western Blot: Triosephosphate isomerase Antibody [NBP1-31470] - Various whole cell extracts (30 ug) were separated by 15% SDS-PAGE, and the membrane was blotted with Triosephosphate isomerase antibody diluted by 1:1000. The HRP-conjugated anti-rabbit IgG antibody (NBP2-19301) was used to detect the primary antibody.



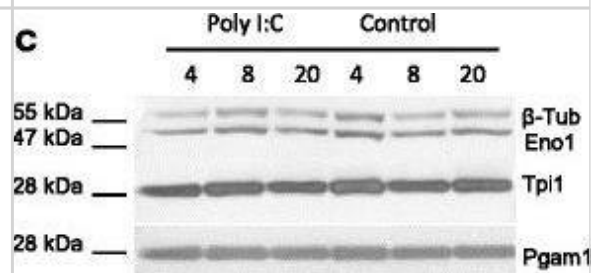
Western Blot: Triosephosphate isomerase Antibody [NBP1-31470] - Various whole cell extracts (30 ug) were separated by 12% SDS-PAGE, and the membrane was blotted with Triosephosphate isomerase antibody [C2C3], C-term diluted at 1:1000. The HRP-conjugated anti-rabbit IgG antibody (NBP2-19301) was used to detect the primary antibody.



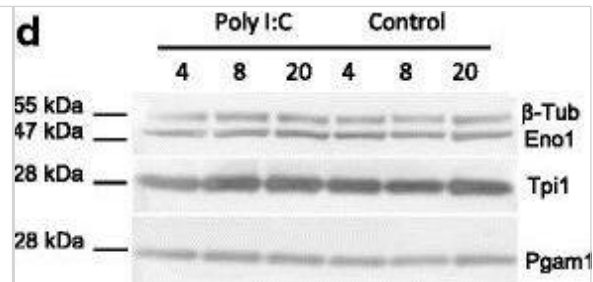
Western Blot: Triosephosphate isomerase Antibody [NBP1-31470] - Immunodetection of glycolytic enzymes within bat & human cells. a-d Immunodetection of Eno1, Tpi1, Pgam1 &  $\beta$ 2-Tub (load control) in Poly I:C transfected & Control cells at 4, 8 & 20 hpt (a: PaKiT03, b: PaLuT02, c: HEK293T, d: HeLa). e-h Densitometry analysis following immunodetection of Eno1, Tpi1, Pgam1. Average ratios were calculated as Poly I:C/Control normalised to  $\beta$ -Tub. Error bars represent the standard error of the mean from two technical replicates (e: PaKiT03, f: PaLuT02, g: HEK293T, h: HeLa) Image collected & cropped by CiteAb from the following publication (<https://pubmed.ncbi.nlm.nih.gov/26535029>), licensed under a CC-BY license. Not internally tested by Novus Biologicals.



Western Blot: Triosephosphate isomerase Antibody [NBP1-31470] - Immunodetection of glycolytic enzymes within bat & human cells. a-d Immunodetection of Eno1, Tpi1, Pgam1 &  $\beta$ 2-Tub (load control) in Poly I:C transfected & Control cells at 4, 8 & 20 hpt (a: PaKiT03, b: PaLuT02, c: HEK293T, d: HeLa). e-h Densitometry analysis following immunodetection of Eno1, Tpi1, Pgam1. Average ratios were calculated as Poly I:C/Control normalised to  $\beta$ -Tub. Error bars represent the standard error of the mean from two technical replicates (e: PaKiT03, f: PaLuT02, g: HEK293T, h: HeLa) Image collected & cropped by CiteAb from the following publication (<https://pubmed.ncbi.nlm.nih.gov/26535029>), licensed under a CC-BY license. Not internally tested by Novus Biologicals.



Western Blot: Triosephosphate isomerase Antibody [NBP1-31470] - Immunodetection of glycolytic enzymes within bat & human cells. a-d Immunodetection of Eno1, Tpi1, Pgam1 &  $\beta$ 2-Tub (load control) in Poly I:C transfected & Control cells at 4, 8 & 20 hpt (a: PaKiT03, b: PaLuT02, c: HEK293T, d: HeLa). e-h Densitometry analysis following immunodetection of Eno1, Tpi1, Pgam1. Average ratios were calculated as Poly I:C/Control normalised to  $\beta$ -Tub. Error bars represent the standard error of the mean from two technical replicates (e: PaKiT03, f: PaLuT02, g: HEK293T, h: HeLa) Image collected & cropped by CiteAb from the following publication (<https://pubmed.ncbi.nlm.nih.gov/26535029>), licensed under a CC-BY license. Not internally tested by Novus Biologicals.



## Publications

Mok L, Wynne JW, Ford K et al. Proteomic analysis of Pteropus alecto kidney cells in response to the viral mimic, Poly I:C *Proteome Science* 2015-12-01 [PMID: 26535029]

Duan Y, Li J, Wang F et al. Protein modifications throughout the lung cancer proteome unravel the cancer-specific regulation of glycolysis *Cell reports* 2021-12-21 [PMID: 34936872]

Mok L, Wynne JW, Ford K et al. Proteomic analysis of Pteropus alecto kidney cells in response to the viral mimic, Poly I:C *Proteome Sci* 2015 Nov 2 [PMID: 26535029] (WB, Bt)

### Details:

Pteropus alecto (Black fruit bat)

Gagaoua M, Bonnet M, Picard B Protein Array-Based Approach to Evaluate Biomarkers of Beef Tenderness and Marbling in Cows: Understanding of the Underlying Mechanisms and Prediction Foods (Basel, Switzerland) 2020-08-26 [PMID: 32858893] (Bovine)

Bonnet M, Soulat J, Bons J et al. Quantification of biomarkers for beef meat qualities using a combination of Parallel Reaction Monitoring- and antibody-based proteomics *Food Chem* 2020-02-10 [PMID: 32078991] (WB, Bovine)

Picard B, Gagaoua M, Al Jammam M, Bonnet M et al. Beef tenderness and intramuscular fat proteomic biomarkers: Effect of gender and rearing practices. *J Proteomics*. 2019-03-17 [PMID: 30894324] (WB, Bovine)

Gagaoua M, Bonnet M, Ellies-Oury MP et al. Reverse phase protein arrays for the identification/validation of biomarkers of beef texture and their use for early classification of carcasses. *Food Chem* 2018-01-10 [PMID: 29412918]

Gagaoua M, Bonnet M, De Koning L et al. Reverse Phase Protein array for the quantification and validation of protein biomarkers of beef qualities: The case of meat color from Charolais breed. *Meat Sci* 2018-07-05 [PMID: 30015160] (Bovine)

Picard B, Gagaoua M, Al-Jammam M et al. Beef tenderness and intramuscular fat proteomic biomarkers: muscle type effect. *PeerJ* 2018-06-07 [PMID: 29892502] (Bovine)

Mok L, Wynne JW, Ford K et al. Proteomic analysis of Pteropus alecto kidney cells in response to the viral mimic, Poly I:C. *Proteome Sci* 2015 Nov 2 [PMID: 26535029] (WB, Bt)

### Details:

Pteropus alecto (Black fruit bat)

Ucker DS, Jain MR, Pattabiraman G et al. Externalized glycolytic enzymes are novel, conserved, and early biomarkers of apoptosis. *The Journal of Biological Chemistry*. 2012-01-18 [PMID: 22262862]



### **Novus Biologicals USA**

10730 E. Briarwood Avenue  
Centennial, CO 80112  
USA  
Phone: 303.730.1950  
Toll Free: 1.888.506.6887  
Fax: 303.730.1966  
nb-customerservice@bio-techne.com

### **Bio-Techne Canada**

21 Canmotor Ave  
Toronto, ON M8Z 4E6  
Canada  
Phone: 905.827.6400  
Toll Free: 855.668.8722  
Fax: 905.827.6402  
canada.inquires@bio-techne.com

### **Bio-Techne Ltd**

19 Barton Lane  
Abingdon Science Park  
Abingdon, OX14 3NB, United Kingdom  
Phone: (44) (0) 1235 529449  
Free Phone: 0800 37 34 15  
Fax: (44) (0) 1235 533420  
info.EMEA@bio-techne.com

### **General Contact Information**

www.novusbio.com  
Technical Support: nb-technical@bio-techne.com  
Orders: nb-customerservice@bio-techne.com  
General: novus@novusbio.com

### **Products Related to NBP1-31470**

---

NBP2-33376H	Blue Marker Antibody (6F4-F6) [HRP]
HAF008	Goat anti-Rabbit IgG Secondary Antibody [HRP]
NB7160	Goat anti-Rabbit IgG (H+L) Secondary Antibody [HRP]
NBP2-24891	Rabbit IgG Isotype Control

---

### **Limitations**

This product is for research use only and is not approved for use in humans or in clinical diagnosis. Primary Antibodies are guaranteed for 1 year from date of receipt.

For more information on our 100% guarantee, please visit [www.novusbio.com/guarantee](http://www.novusbio.com/guarantee)

Earn gift cards/discounts by submitting a review: [www.novusbio.com/reviews/submit/NBP1-31470](http://www.novusbio.com/reviews/submit/NBP1-31470)

Earn gift cards/discounts by submitting a publication using this product:  
[www.novusbio.com/publications](http://www.novusbio.com/publications)

