

# Product Datasheet

## PRPS2 Antibody - BSA Free NBP1-31435

Unit Size: 0.1 ml

Aliquot and store at -20C or -80C. Avoid freeze-thaw cycles.

[www.novusbio.com](http://www.novusbio.com)



[technical@novusbio.com](mailto:technical@novusbio.com)

### Publications: 4

Protocols, Publications, Related Products, Reviews, Research Tools and Images at:  
[www.novusbio.com/NBP1-31435](http://www.novusbio.com/NBP1-31435)

Updated 9/9/2025 v.20.1

Earn rewards for product  
reviews and publications.

Submit a publication at [www.novusbio.com/publications](http://www.novusbio.com/publications)

Submit a review at [www.novusbio.com/reviews/destination/NBP1-31435](http://www.novusbio.com/reviews/destination/NBP1-31435)



**NBP1-31435**

PRPS2 Antibody - BSA Free

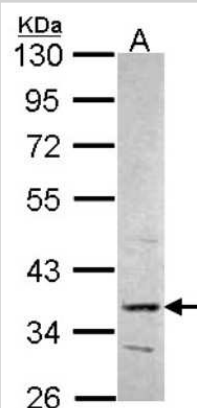
Product Information	
Unit Size	0.1 ml
Concentration	Concentrations vary lot to lot. See vial label for concentration. If unlisted please contact technical services.
Storage	Aliquot and store at -20C or -80C. Avoid freeze-thaw cycles.
Clonality	Polyclonal
Preservative	0.01% Thimerosal
Isotype	IgG
Purity	Antigen Affinity-purified
Buffer	0.1M Tris, 0.1M Glycine, 10% Glycerol
Target Molecular Weight	35 kDa

Product Description	
Description	Novus Biologicals Rabbit PRPS2 Antibody - BSA Free (NBP1-31435) is a polyclonal antibody validated for use in IHC, WB and ICC/IF. Anti-PRPS2 Antibody: Cited in 4 publications. All Novus Biologicals antibodies are covered by our 100% guarantee.
Host	Rabbit
Gene ID	5634
Gene Symbol	PRPS2
Species	Human
Reactivity Notes	Xenopus laevis (96%).
Immunogen	Recombinant protein encompassing a sequence within the center region of human PRPS2. The exact sequence is proprietary.

Product Application Details	
Applications	Western Blot, Immunohistochemistry-Paraffin, Immunocytochemistry/Immunofluorescence, Immunohistochemistry, Knockdown Validated
Recommended Dilutions	Western Blot 1:500-1:3000, Immunohistochemistry 1:100-1:1000, Immunocytochemistry/ Immunofluorescence 1:100-1:1000, Immunohistochemistry-Paraffin 1:100-1:1000, Knockdown Validated

**Images**

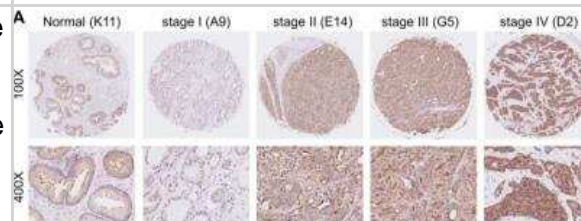
Western Blot: PRPS2 Antibody [NBP1-31435] - Sample (30 ug of whole cell lysate) A: Hep G2 10% SDS PAGE PRPS2 antibody, antibody diluted at 1:1000.



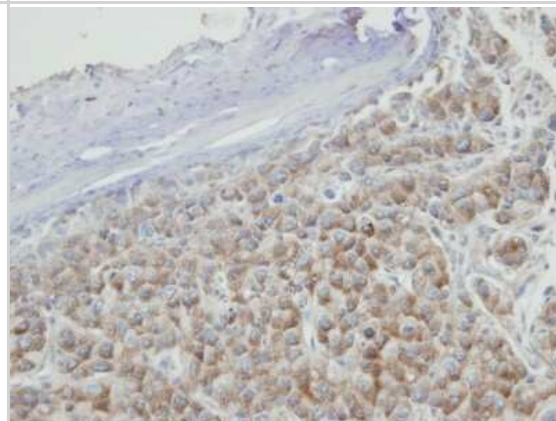
Immunocytochemistry/Immunofluorescence: PRPS2 Antibody [NBP1-31435] - Analysis of HaLa, using NBP1-31435 at 1:200 dilution.



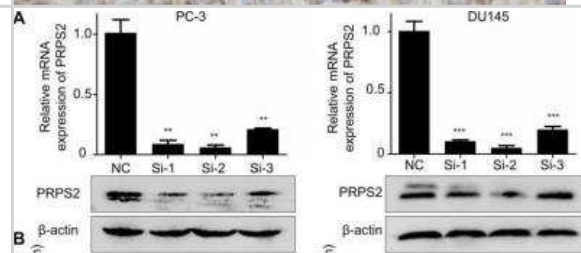
Immunohistochemistry: PRPS2 Antibody [NBP1-31435] - Representative immunohistochemistry images of PRPS2 protein expression from the whole TMA with low intensity (b1) in normal prostate tissue (K11, scale bar = 0.2 mm), with low intensity (b4) in prostate cancer tissue (A9, scale bar = 0.2 mm), with intermediate intensity (b3) in prostate cancer tissue (G5, scale bar = 0.2 mm), and with high intensity (b2) in prostate cancer tissue (D2, scale bar = 0.2 mm). The percentage of PRPS2 positive cells in D2 is 90%, in G5 is 70%, and in A9 is 15%. Therefore, the percentage score of the case in D7 is 3 and its total protein expression score is  $3 \times 3 = 9$ . The percentage score of the case in H7 is 2 and its total protein expression score is  $2 \times 2 = 4$ . The percentage score of the case in E4 is 1 and its total protein expression score is  $1 \times 1 = 1$ . Image collected and cropped by CiteAb from the following publication ([jancer.org/v11p1027.htm](http://jancer.org/v11p1027.htm)), licensed under a CC-BY license.



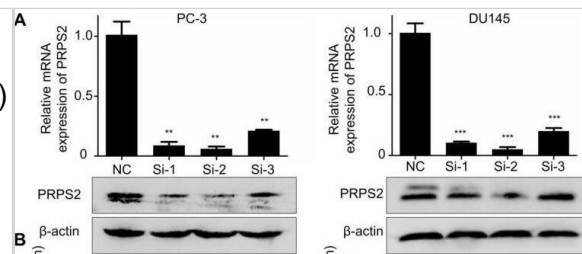
Immunohistochemistry-Paraffin: PRPS2 Antibody [NBP1-31435] - Paraffin-embedded Hep3B xenograft, using antibody at 1:100 dilution.



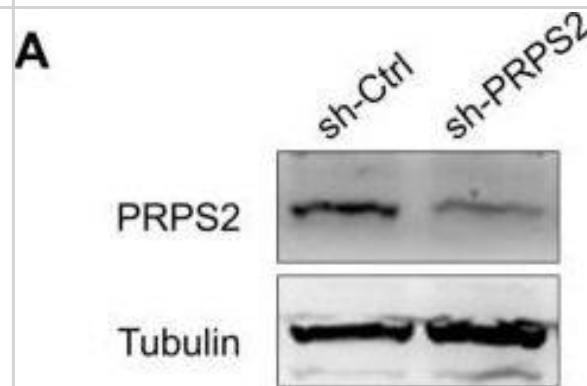
Western Blot: PRPS2 Antibody [NBP1-31435] - The effects of PRPS2 knockdown confirmed by qRT-PCR (top) and Western blotting (bottom). Image collected and cropped by CiteAb from the following publication ([jancer.org/v11p1027.htm](http://jancer.org/v11p1027.htm)), licensed under a CC-BY license.



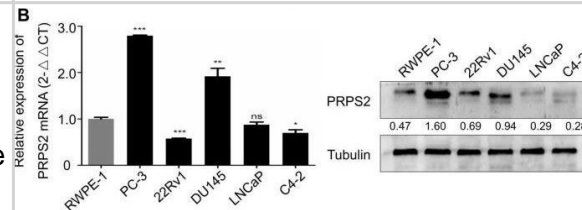
Western Blot: PRPS2 Antibody [NBP1-31435] - Knockdown of PRPS2 decreased prostate cancer cell growth. (A) The effects of PRPS2 knockdown confirmed by qRT-PCR (top) & Western blotting (bottom). (B) In the CCK-8 assay, cell viability was decreased in si-PRPS2 compared with NC. (C) In the plate colony formation assay, colony formation was obviously decreased in si-PRPS2 cells transfected. \*\*\* $P < 0.001$ . NC: negative controls. Image collected & cropped by CiteAb from the following publication (<https://pubmed.ncbi.nlm.nih.gov/31956349>), licensed under a CC-BY license. Not internally tested by Novus Biologicals.



Western Blot: PRPS2 Antibody [NBP1-31435] - Knockdown of PRPS2 inhibits xenograft tumor growth in vivo. (A) PRPS2 shRNA effectively blocked its protein expression in PC-3 cells. Cells were stably transfected with scramble (sh-Ctrl) or PRPS2 shRNA (sh-PRPS2). PRPS2 protein levels were normalized to α-Tubulin. (B) Gross observation of xenograft tumor size in NOD/SCID mice. (C & D) Silencing of PRPS2 inhibited the tumor growth, including tumor volume ( $P < 0.001$ ) & weight ( $P = 0.028$ ,  $n = 6$ ). (E) H&E-stained paraffin-embedded sections obtained from xenografts of PC-3 cells. (F) Top: Immunohistochemical analysis of Ki-67 in the xenografts; Bottom: The apoptosis in tumor tissues was evaluated by TUNEL assay ( $\times 200$ ). Graphical illustrated the quantification of Ki-67 & TUNEL positive cells percentage. \*\*\* $P < 0.001$ . Image collected & cropped by CiteAb from the following publication (<https://pubmed.ncbi.nlm.nih.gov/31956349>), licensed under a CC-BY license. Not internally tested by Novus Biologicals.



Western Blot: PRPS2 Antibody [NBP1-31435] - PRPS2 expression in prostate cancer tissues & prostate cancer cell lines. (A) Representative immunohistochemistry images of PRPS2 protein expression from the whole TMA with low intensity (b1) in normal prostate tissue (K11, scale bar = 0.2 mm), with low intensity (b4) in prostate cancer tissue (A9, scale bar = 0.2 mm), with intermediate intensity (b3) in prostate cancer tissue (G5, scale bar = 0.2 mm), & with high intensity (b2) in prostate cancer tissue (D2, scale bar = 0.2 mm). The percentage of PRPS2 positive cells in D2 is 90%, in G5 is 70%, & in A9 is 15%. Therefore, the percentage score of the case in D7 is 3 & its total protein expression score is  $3 \times 3 = 9$ . The percentage score of the case in H7 is 2 & its total protein expression score is  $2 \times 2 = 4$ . The percentage score of the case in E4 is 1 & its total protein expression score is  $1 \times 1 = 1$ . (B) Western blotting & real-time qPCR analysis of PRPS2 protein & mRNA expression in prostate cancer cell lines & normal prostate epithelial cell lines (RWPE-1). (\* $P < 0.05$ ; \*\* $P < 0.01$ ; \*\*\* $P < 0.001$ ). PRPS2: Phosphoribosyl pyrophosphate synthetase 2; TMA: tissue microarray. Image collected & cropped by CiteAb from the following publication (<https://pubmed.ncbi.nlm.nih.gov/31956349>), licensed under a CC-BY license. Not internally tested by Novus Biologicals.



## Publications

Emmanuel Benichou, Bolaji Seffou, Selin Topçu, Ophélie Renoult, Véronique Lenoir, Julien Planchais, Caroline Bonner, Catherine Postic, Carina Prip-Buus, Claire Pecqueur, Sandra Guilmeau, Marie-Clotilde Alves-Guerra, Renaud Dentin The transcription factor ChREBP Orchestrates liver carcinogenesis by coordinating the PI3K/AKT signaling and cancer metabolism Nature Communications 2024-02-29 [PMID: 38424041]

Chen L, Zhou Q, Zhang P et al. Direct stimulation of de novo nucleotide synthesis by O-GlcNAcylation Nature chemical biology 2023-06-12 [PMID: 37308732] (WB, Human)

Liu G, Luo Y, Hou P PRPS2 Enhances Resistance to Cisplatin via Facilitating Exosomes-mediated Macrophage M2 Polarization in Non-small Cell Lung Cancer Immunological investigations 2021-07-12 [PMID: 34251965]

Qiao H, Tan X, Lv D, et al. Phosphoribosyl pyrophosphate synthetases 2 knockdown inhibits prostate cancer progression by suppressing cell cycle and inducing cell apoptosis J. Cancer 2019-12-13 [PMID: 31956349] (IF/IHC, Human)





### **Novus Biologicals USA**

10730 E. Briarwood Avenue  
Centennial, CO 80112  
USA  
Phone: 303.730.1950  
Toll Free: 1.888.506.6887  
Fax: 303.730.1966  
nb-customerservice@bio-techne.com

### **Bio-Techne Canada**

21 Canmotor Ave  
Toronto, ON M8Z 4E6  
Canada  
Phone: 905.827.6400  
Toll Free: 855.668.8722  
Fax: 905.827.6402  
canada.inquires@bio-techne.com

### **Bio-Techne Ltd**

19 Barton Lane  
Abingdon Science Park  
Abingdon, OX14 3NB, United Kingdom  
Phone: (44) (0) 1235 529449  
Free Phone: 0800 37 34 15  
Fax: (44) (0) 1235 533420  
info.EMEA@bio-techne.com

### **General Contact Information**

www.novusbio.com  
Technical Support: nb-technical@bio-techne.com  
Orders: nb-customerservice@bio-techne.com  
General: novus@novusbio.com

### **Products Related to NBP1-31435**

---

NBP2-33376H	Blue Marker Antibody (6F4-F6) [HRP]
HAF008	Goat anti-Rabbit IgG Secondary Antibody [HRP]
NB7160	Goat anti-Rabbit IgG (H+L) Secondary Antibody [HRP]
NBP2-24891	Rabbit IgG Isotype Control

---

### **Limitations**

This product is for research use only and is not approved for use in humans or in clinical diagnosis. Primary Antibodies are guaranteed for 1 year from date of receipt.

For more information on our 100% guarantee, please visit [www.novusbio.com/guarantee](http://www.novusbio.com/guarantee)

Earn gift cards/discounts by submitting a review: [www.novusbio.com/reviews/submit/NBP1-31435](http://www.novusbio.com/reviews/submit/NBP1-31435)

Earn gift cards/discounts by submitting a publication using this product:  
[www.novusbio.com/publications](http://www.novusbio.com/publications)

