

Product Datasheet

Acetylcholinesterase/ACHE Antibody - BSA Free NBP1-31329

Unit Size: 100 ul

Aliquot and store at -20C or -80C. Avoid freeze-thaw cycles.

www.novusbio.com



technical@novusbio.com

Protocols, Publications, Related Products, Reviews, Research Tools and Images at:
www.novusbio.com/NBP1-31329

Updated 9/9/2025 v.20.1

Earn rewards for product
reviews and publications.

Submit a publication at www.novusbio.com/publications

Submit a review at www.novusbio.com/reviews/destination/NBP1-31329



NBP1-31329**Acetylcholinesterase/ACHE Antibody - BSA Free**

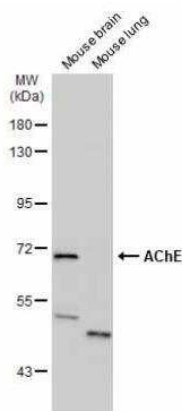
Product Information	
Unit Size	100 ul
Concentration	Concentrations vary lot to lot. See vial label for concentration. If unlisted please contact technical services.
Storage	Aliquot and store at -20C or -80C. Avoid freeze-thaw cycles.
Clonality	Polyclonal
Preservative	0.025% Proclin 300
Isotype	IgG
Purity	Antigen Affinity-purified
Buffer	PBS, 20% Glycerol
Target Molecular Weight	68 kDa

Product Description	
Description	Novus Biologicals Rabbit Acetylcholinesterase/ACHE Antibody - BSA Free (NBP1-31329) is a polyclonal antibody validated for use in IHC, WB and ICC/IF. All Novus Biologicals antibodies are covered by our 100% guarantee.
Host	Rabbit
Gene ID	43
Gene Symbol	ACHE
Species	Human, Mouse, Rat
Reactivity Notes	Cat (95%).
Marker	Early Neuronal Development Marker
Immunogen	Recombinant protein encompassing a sequence within the C-terminus region of human Acetylcholinesterase/ACHE. The exact sequence is proprietary.

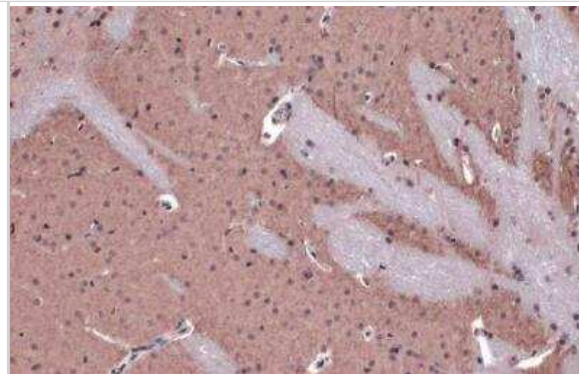
Product Application Details	
Applications	Western Blot, Immunohistochemistry-Paraffin, Immunocytochemistry/Immunofluorescence, Immunohistochemistry, Immunohistochemistry-Frozen
Recommended Dilutions	Western Blot 1:500-1:3000, Immunohistochemistry 1:100-1:1000, Immunocytochemistry/ Immunofluorescence 1:100-1:1000, Immunohistochemistry-Paraffin 1:100-1:1000, Immunohistochemistry-Frozen 1:100-1:1000

Images

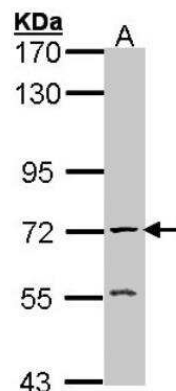
Western Blot: Acetylcholinesterase/ACHE Antibody [NBP1-31329] - Various tissue extracts (50 ug) were separated by 7.5% SDS-PAGE, and the membrane was blotted with AChE antibody diluted at 1:500. The HRP-conjugated anti-rabbit IgG antibody (NBP2-19301) was used to detect the primary antibody.



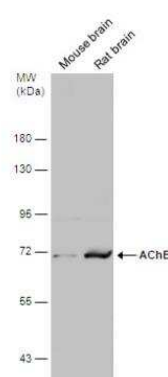
Immunohistochemistry-Paraffin: Acetylcholinesterase/ACHE Antibody [NBP1-31329] - Mouse brain. AChE stained by AChE antibody diluted at 1:500. Antigen Retrieval: Citrate buffer, pH 6.0, 15 min.



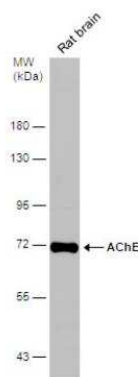
Western Blot: Acetylcholinesterase/ACHE Antibody [NBP1-31329] - Sample (30 ug of whole cell lysate) A: Raji 7. 5% SDS PAGE; antibody diluted at 1:1000.



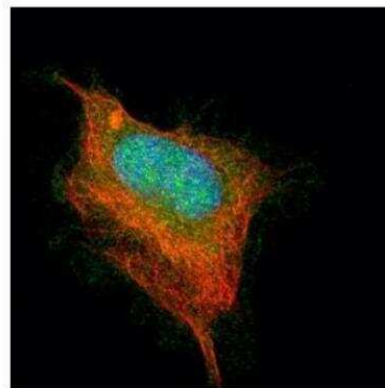
Western Blot: Acetylcholinesterase/ACHE Antibody [NBP1-31329] - Various tissue extracts (50 ug) were separated by 7.5% SDS-PAGE, and the membrane was blotted with AChE antibody diluted at 1:500. The HRP-conjugated anti-rabbit IgG antibody (NBP2-19301) was used to detect the primary antibody.



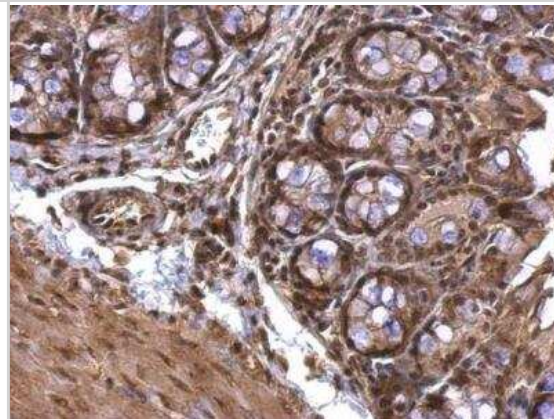
Western Blot: Acetylcholinesterase/ACHE Antibody [NBP1-31329] - Rat tissue extract (50 ug) was separated by 7.5% SDS-PAGE, and the membrane was blotted with AChE antibody diluted at 1:500.



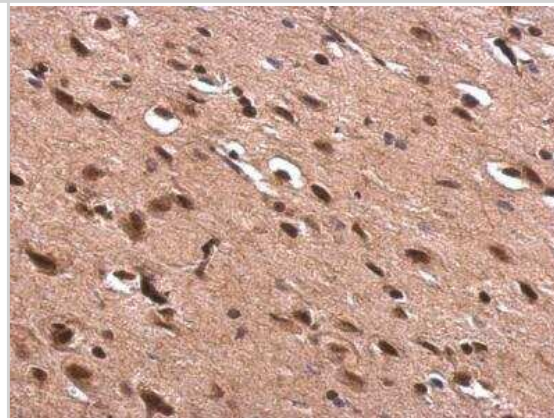
Immunocytochemistry/Immunofluorescence: Acetylcholinesterase/ACHE Antibody [NBP1-31329] - Paraformaldehyde-fixed HeLa, using AChE antibody (Green) at 1:500 dilution. Alpha-tubulin filaments were labeled with an alpha Tubulin antibody (Red) at 1:2500.



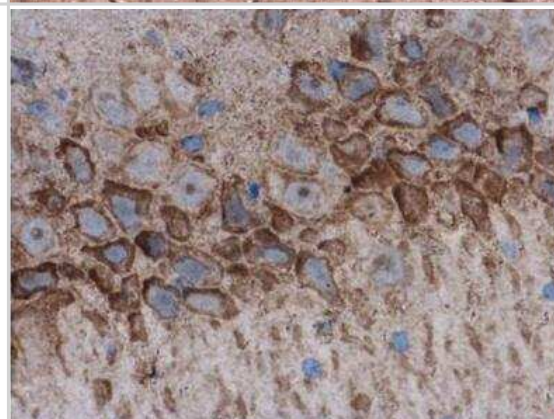
Immunohistochemistry-Paraffin: Acetylcholinesterase/ACHE Antibody [NBP1-31329] - Mouse colon. AChE antibody dilution: 1:500. Antigen Retrieval: Trilogy™ (EDTA based, pH 8.0) buffer, 15min.



Immunohistochemistry-Paraffin: Acetylcholinesterase/ACHE Antibody [NBP1-31329] - Rat fore brain. AChE antibody dilution: 1:500. Antigen Retrieval: Trilogy™ (EDTA based, pH 8.0) buffer, 15min.



Immunohistochemistry-Paraffin: Acetylcholinesterase/ACHE Antibody [NBP1-31329] - Rat brain. AChE antibody diluted at 1:500. Antigen Retrieval: Citrate buffer, pH 6.0, 15 min.

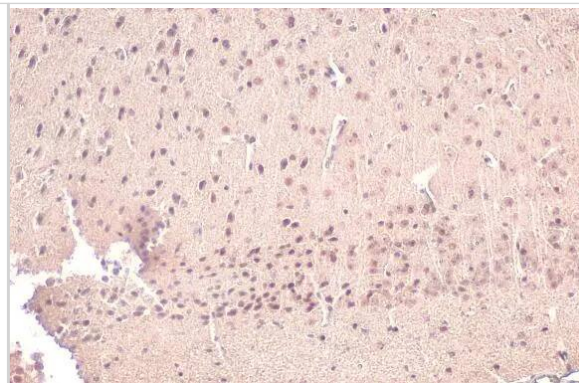


Immunohistochemistry-Paraffin: Acetylcholinesterase/ACHE Antibody [NBP1-31329] - Acetylcholinesterase/ACHE antibody detects Acetylcholinesterase/ACHE protein at nucleus by immunohistochemical analysis.

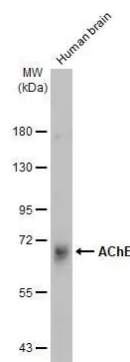
Sample: Paraffin-embedded mouse brain.

Acetylcholinesterase/ACHE stained by Acetylcholinesterase/ACHE antibody (NBP1-31329) diluted at 1:500.

Antigen Retrieval: Citrate buffer, pH 6.0, 15 min



Western Blot: Acetylcholinesterase/ACHE Antibody [NBP1-31329] - Human tissue extract (30 ug) was separated by 7.5% SDS-PAGE, and the membrane was blotted with Acetylcholinesterase/ACHE antibody (NBP1-31329) diluted at 1:500. The HRP-conjugated anti-rabbit IgG antibody was used to detect the primary antibody.

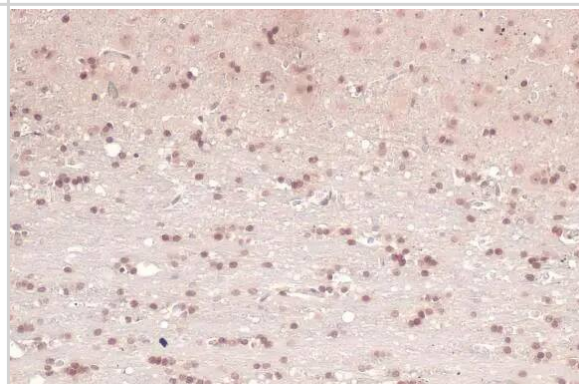


Immunohistochemistry-Paraffin: Acetylcholinesterase/ACHE Antibody [NBP1-31329] - Acetylcholinesterase/ACHE antibody detects Acetylcholinesterase/ACHE protein at nucleus by immunohistochemical analysis.

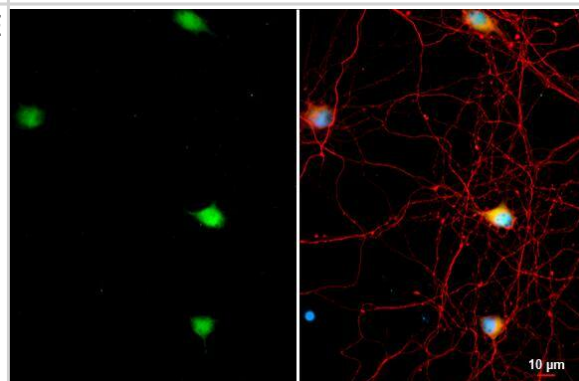
Sample: Paraffin-embedded rat brain.

Acetylcholinesterase/ACHE stained by Acetylcholinesterase/ACHE antibody (NBP1-31329) diluted at 1:500.

Antigen Retrieval: Citrate buffer, pH 6.0, 15 min



Acetylcholinesterase/ACHE antibody detects Acetylcholinesterase/ACHE protein by immunofluorescent analysis. Sample: DIV9 rat hippocampal neuron and Glia cell cells were fixed in 4% paraformaldehyde at RT for 15 min. Green: Acetylcholinesterase/ACHE stained by Acetylcholinesterase/ACHE antibody (NBP1-31329) diluted at 1:500. Red: Tau, an axon marker, stained by Tau antibody [GT287] diluted at 1:500. Blue: Fluoroshield with DAPI .



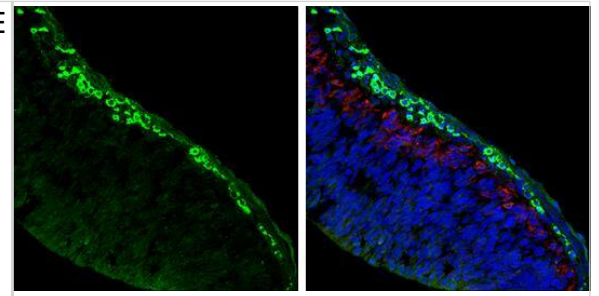
Acetylcholinesterase/ACHE antibody detects Acetylcholinesterase/ACHE protein expression by immunohistochemical analysis.

Sample: Frozen sectioned E13.5 Rat brain.

Green: Acetylcholinesterase/ACHE protein stained by Acetylcholinesterase/ACHE antibody (NBP1-31329) diluted at 1:250.

Red: beta Tubulin 3/ TUJ1, a mature neuron marker, stained by beta Tubulin 3/ TUJ1 antibody [GT11710] diluted at 1:500.

Blue: Fluoroshield with DAPI .





Novus Biologicals USA

10730 E. Briarwood Avenue
Centennial, CO 80112
USA
Phone: 303.730.1950
Toll Free: 1.888.506.6887
Fax: 303.730.1966
nb-customerservice@bio-techne.com

Bio-Techne Canada

21 Canmotor Ave
Toronto, ON M8Z 4E6
Canada
Phone: 905.827.6400
Toll Free: 855.668.8722
Fax: 905.827.6402
canada.inquires@bio-techne.com

Bio-Techne Ltd

19 Barton Lane
Abingdon Science Park
Abingdon, OX14 3NB, United Kingdom
Phone: (44) (0) 1235 529449
Free Phone: 0800 37 34 15
Fax: (44) (0) 1235 533420
info.EMEA@bio-techne.com

General Contact Information

www.novusbio.com
Technical Support: nb-technical@bio-techne.com
Orders: nb-customerservice@bio-techne.com
General: novus@novusbio.com

Products Related to NBP1-31329

NBP2-33376H	Blue Marker Antibody (6F4-F6) [HRP]
HAF008	Goat anti-Rabbit IgG Secondary Antibody [HRP]
NB7160	Goat anti-Rabbit IgG (H+L) Secondary Antibody [HRP]
NBP2-24891	Rabbit IgG Isotype Control

Limitations

This product is for research use only and is not approved for use in humans or in clinical diagnosis. Primary Antibodies are guaranteed for 1 year from date of receipt.

For more information on our 100% guarantee, please visit www.novusbio.com/guarantee

Earn gift cards/discounts by submitting a review: www.novusbio.com/reviews/submit/NBP1-31329

Earn gift cards/discounts by submitting a publication using this product:
www.novusbio.com/publications

