

Product Datasheet

Vimentin Antibody NBP1-31327

Unit Size: 0.1 ml

Aliquot and store at -20C or -80C. Avoid freeze-thaw cycles.

www.novusbio.com



technical@novusbio.com

Reviews: 3 Publications: 13

Protocols, Publications, Related Products, Reviews, Research Tools and Images at:
www.novusbio.com/NBP1-31327

Updated 9/25/2025 v.20.1

**Earn rewards for product
reviews and publications.**

Submit a publication at www.novusbio.com/publications

Submit a review at www.novusbio.com/reviews/destination/NBP1-31327



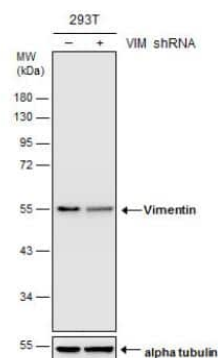
NBP1-31327

Vimentin Antibody

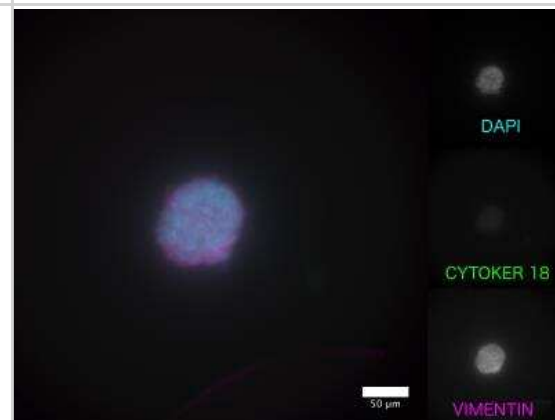
Product Information	
Unit Size	0.1 ml
Concentration	Concentrations vary lot to lot. See vial label for concentration. If unlisted please contact technical services.
Storage	Aliquot and store at -20C or -80C. Avoid freeze-thaw cycles.
Clonality	Polyclonal
Preservative	0.025% Proclin 300
Isotype	IgG
Purity	Antigen Affinity-purified
Buffer	PBS, 1% BSA, 20% Glycerol
Target Molecular Weight	54 kDa
Product Description	
Description	Novus Biologicals Rabbit Vimentin Antibody (NBP1-31327) is a polyclonal antibody validated for use in IHC, WB, ELISA, ICC/IF and IP. Anti-Vimentin Antibody: Cited in 13 publications. All Novus Biologicals antibodies are covered by our 100% guarantee.
Host	Rabbit
Gene ID	7431
Gene Symbol	VIM
Species	Human, Mouse, Rat, Canine, Equine, Feline
Reactivity Notes	Immunogen displays the following percentage of sequence identity for non-tested species: <i>Xenopus laevis</i> (84%). Equine reactivity reported from a verified customer review. Cat (100%).
Marker	Mesenchymal Cells Marker
Immunogen	Recombinant protein encompassing a sequence within the center region of human Vimentin. The exact sequence is proprietary.
Product Application Details	
Applications	Western Blot, Immunohistochemistry-Paraffin, ELISA, Immunocytochemistry/Immunofluorescence, Immunohistochemistry, Immunohistochemistry-Frozen, Immunoprecipitation, Sandwich ELISA, Knockdown Validated
Recommended Dilutions	Western Blot 1:5000-1:50000, ELISA Assay dependent. , Immunohistochemistry Assay dependent. , Immunocytochemistry/ Immunofluorescence 1:100-1:1000, Immunoprecipitation 1:100-1:500, Immunohistochemistry-Paraffin Assay dependent. , Immunohistochemistry-Frozen Assay dependent. , Sandwich ELISA Assay dependent. , Knockdown Validated

Images

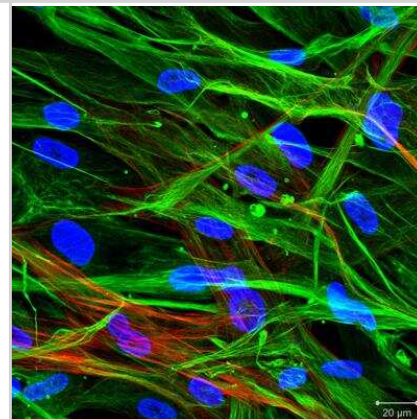
Western Blot: Vimentin Antibody [NBP1-31327] - Non-transfected (-) and transfected (+) 293T whole cell extracts (30 ug) were separated by 10% SDS-PAGE, and the membrane was blotted with Vimentin antibody.



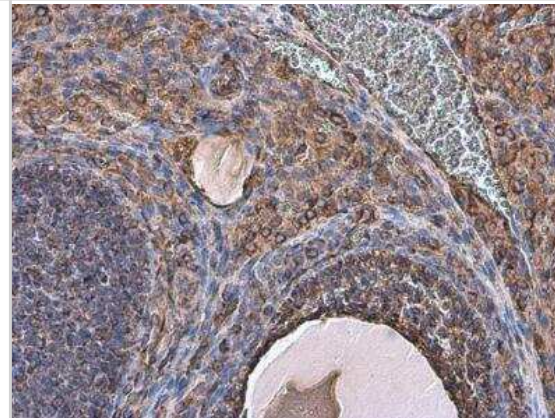
Immunocytochemistry/Immunofluorescence: Vimentin Antibody [NBP1-31327] - Cellular aggregates composed of equine endometrial fibroblast. Co-staining using the vimentin antibody and a cytokeratin antibody (mouse). Image submitted by a verified customer review.



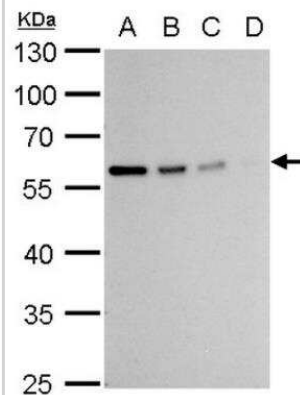
Immunocytochemistry/Immunofluorescence: Vimentin Antibody [NBP1-31327] - Human primary cardiac fibroblasts stained with Vimentin (green) and smooth muscle actin (red) antibodies. Image from verified customer review.



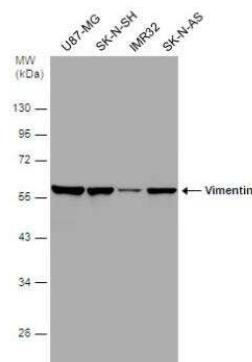
Immunohistochemistry-Paraffin: Vimentin Antibody [NBP1-31327] - Paraffin-embedded rat ovary. Vimentin antibody at 1:500.



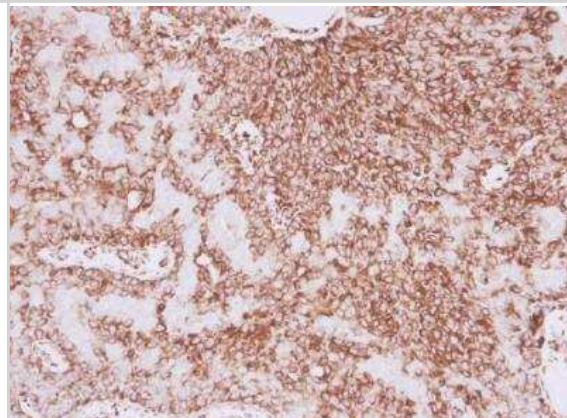
Western Blot: Vimentin Antibody [NBP1-31327] - 293T cell lysate: A. 20 ug. B. 10 ug. C. 5 ug. D. 1 ug.



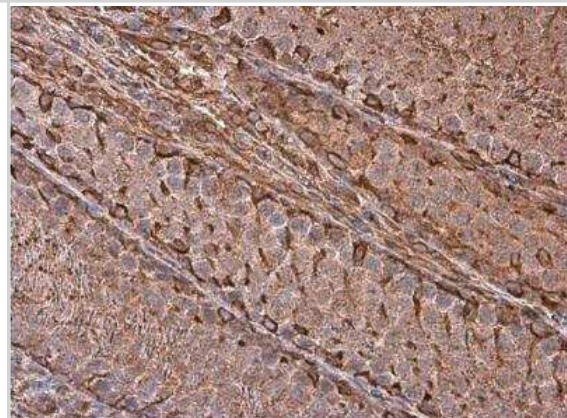
Western Blot: Vimentin Antibody [NBP1-31327] - Various whole cell extracts (30 ug) were separated by 10% SDS-PAGE, membrane was blotted with Vimentin antibody at 1:50000.



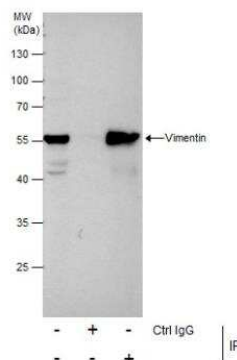
Immunohistochemistry-Paraffin: Vimentin Antibody [NBP1-31327] - Paraffin-embedded human lung adenocarcinoma. Vimentin antibody diluted at 1:500.



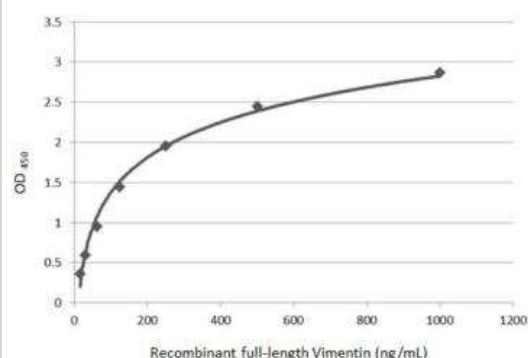
Immunohistochemistry-Paraffin: Vimentin Antibody [NBP1-31327] - Paraffin-embedded rat testis. Vimentin antibody at 1:500.



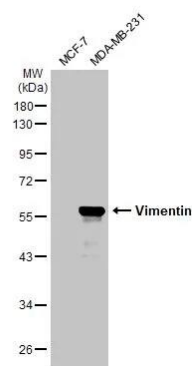
Immunoprecipitation: Vimentin Antibody [NBP1-31327] - Vimentin protein from HeLa whole cell extracts using 5 ug of Vimentin antibody. Western blot analysis was performed using Vimentin antibody. EasyBlot anti-Rabbit IgG was used as a secondary reagent.



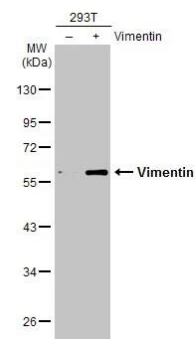
Sandwich ELISA: Vimentin Antibody [NBP1-31327] - Detection of recombinant full-length Vimentin protein using as capture antibody at concentration of 5 ug/mL as detection antibody at concentration of 1 ug/mL. Rabbit IgG antibody (HRP) (NBP2-19301) was diluted at 1:10000 and used to detect the primary antibody.



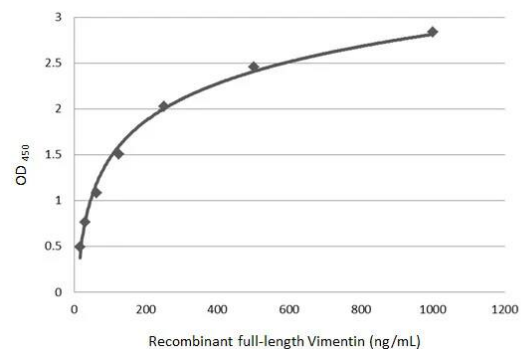
Western Blot: Vimentin Antibody [NBP1-31327] - Various whole cell extracts (30 ug) were separated by 10% SDS-PAGE, and the membrane was blotted with Vimentin antibody (NBP1-31327) diluted at 1:5000. The HRP-conjugated anti-rabbit IgG antibody was used to detect the primary antibody.



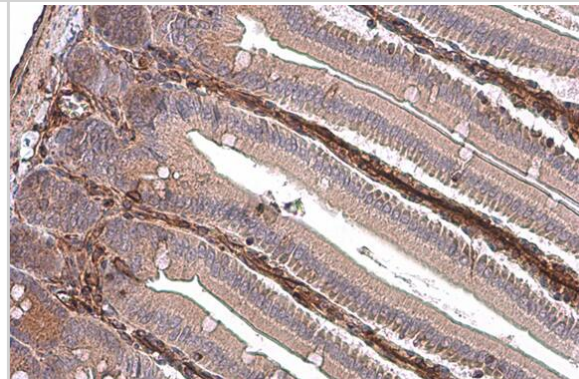
Western Blot: Vimentin Antibody [NBP1-31327] - Non-transfected (-) and transfected (+) 293T whole cell extracts (10 ug) were separated by 10% SDS-PAGE, and the membrane was blotted with Vimentin antibody (NBP1-31327) diluted at 1:10000. The HRP-conjugated anti-rabbit IgG antibody was used to detect the primary antibody.



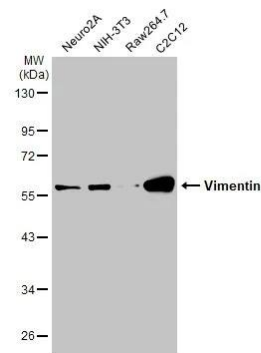
ELISA: Vimentin Antibody [NBP1-31327] - Sandwich ELISA detection of recombinant full-length Vimentin protein using the capture antibody at concentration of 5 ug/mL and NBP1-31327 as detection antibody at concentration of 1 ug/mL. Rabbit IgG antibody (HRP) was diluted at 1:10000 and used to detect the primary antibody.



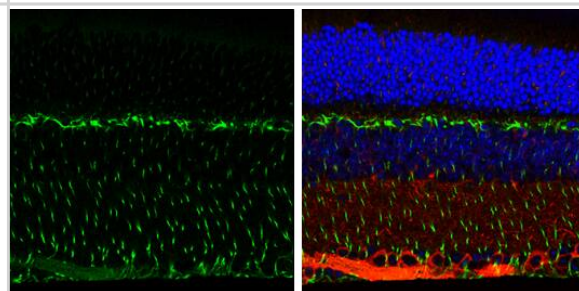
Immunohistochemistry-Paraffin: Vimentin Antibody [NBP1-31327] - Vimentin antibody detects Vimentin protein at cytoplasm by immunohistochemical analysis. Sample: Paraffin-embedded mouse intestine. Vimentin stained by Vimentin antibody (NBP1-31327) diluted at 1:500. Antigen Retrieval: Citrate buffer, pH 6.0, 15 min



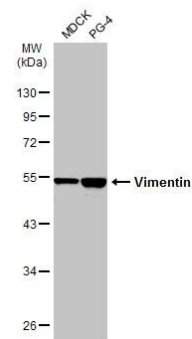
Western Blot: Vimentin Antibody [NBP1-31327] - Various whole cell extracts (30 ug) were separated by 10% SDS-PAGE, and the membrane was blotted with Vimentin antibody (NBP1-31327) diluted at 1:5000. The HRP-conjugated anti-rabbit IgG antibody was used to detect the primary antibody.



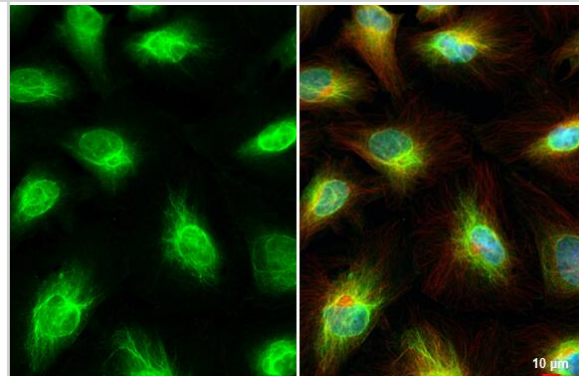
Immunohistochemistry-Paraffin: Vimentin Antibody [NBP1-31327] - Vimentin antibody detects Vimentin protein expression by immunohistochemical analysis. Sample: Paraffin-Embedded adult mouse retina. Green: Vimentin protein stained by Vimentin antibody (NBP1-31327) diluted at 1:250. Red: beta Tubulin 3/ TUJ1, stained by beta Tubulin 3/ TUJ1 antibody [GT11710] diluted at 1:500. Blue: Fluoroshield with DAPI .



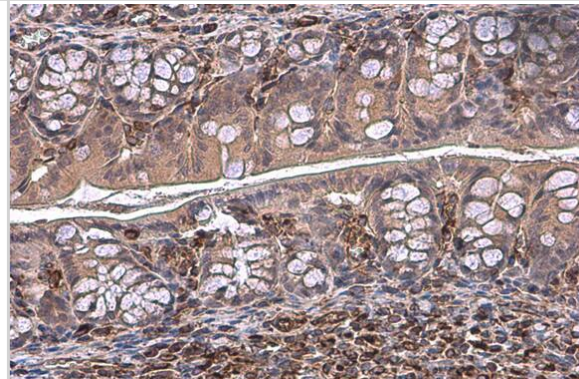
Western Blot: Vimentin Antibody [NBP1-31327] - Various whole cell extracts (30 ug) were separated by 10% SDS-PAGE, and the membrane was blotted with Vimentin antibody (NBP1-31327) diluted at 1:20000. The HRP-conjugated anti-rabbit IgG antibody was used to detect the primary antibody.



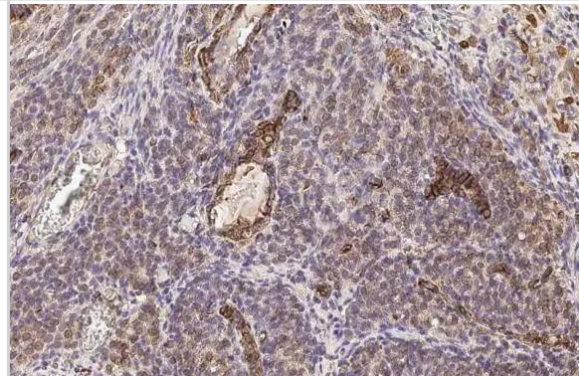
Immunocytochemistry/ Immunofluorescence: Vimentin Antibody [NBP1-31327] - Vimentin antibody detects Vimentin protein at cytoskeleton and nucleus by immunofluorescent analysis. Sample: HeLa cells were fixed in 4% paraformaldehyde at RT for 15 min. Green: Vimentin stained by Vimentin antibody (NBP1-31327) diluted at 1:500. Red: alpha Tubulin, a cytoskeleton marker, stained by alpha Tubulin antibody [GT114] diluted at 1:1000. Blue: Fluoroshield with DAPI .



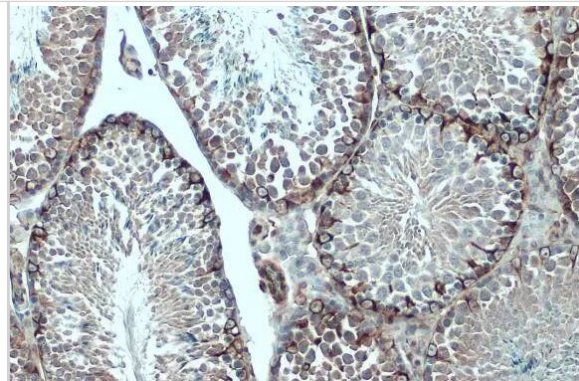
Immunohistochemistry-Paraffin: Vimentin Antibody [NBP1-31327] - Vimentin antibody detects Vimentin protein at cytoplasm by immunohistochemical analysis. Sample: Paraffin-embedded mouse colon. Vimentin stained by Vimentin antibody (NBP1-31327) diluted at 1:500. Antigen Retrieval: Citrate buffer, pH 6.0, 15 min



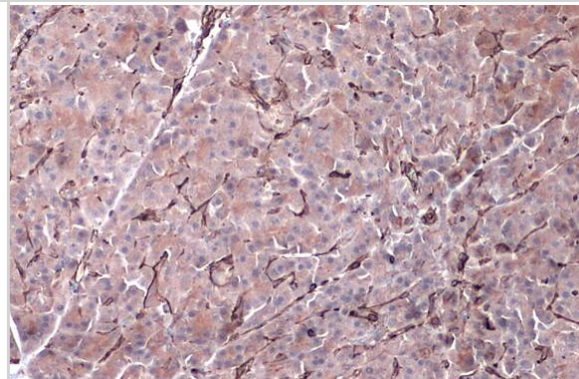
Immunohistochemistry-Paraffin: Vimentin Antibody [NBP1-31327] - Vimentin antibody detects Vimentin protein at cell membrane and cytoplasm by immunohistochemical analysis. Sample: Paraffin-embedded rat ovary. Vimentin stained by Vimentin antibody (NBP1-31327) diluted at 1:500. Antigen Retrieval: Citrate buffer, pH 6.0, 15 min



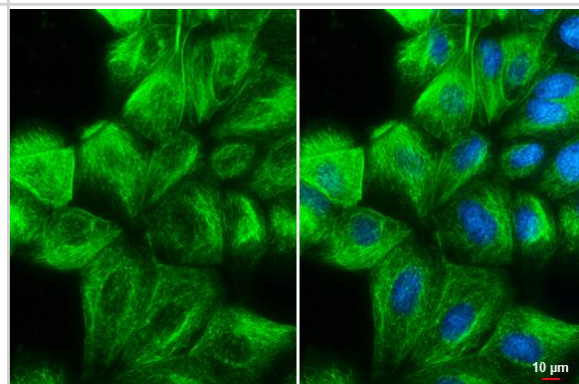
Immunohistochemistry-Paraffin: Vimentin Antibody [NBP1-31327] - Vimentin antibody detects Vimentin protein at cytoplasm by immunohistochemical analysis. Sample: Paraffin-embedded mouse testis. Vimentin stained by Vimentin antibody (NBP1-31327) diluted at 1:500. Antigen Retrieval: Citrate buffer, pH 6.0, 15



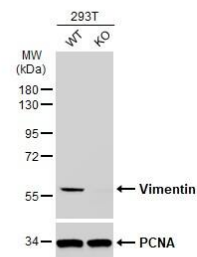
Immunohistochemistry-Paraffin: Vimentin Antibody [NBP1-31327] - Vimentin antibody detects Vimentin protein by immunohistochemical analysis. Sample: Paraffin-embedded dog pancreas. Vimentin stained by Vimentin antibody (NBP1-31327) diluted at 1:500. Antigen Retrieval: Citrate buffer, pH 6.0, 15 min



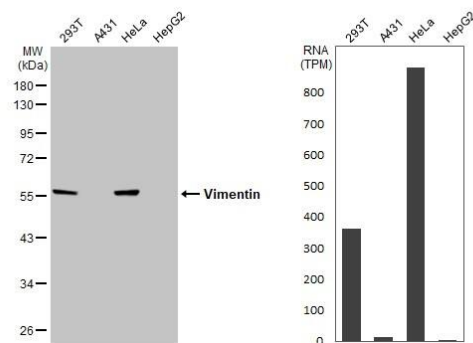
Immunocytochemistry/ Immunofluorescence: Vimentin Antibody [NBP1-31327] - Vimentin antibody detects Vimentin protein at cytoskeleton by immunofluorescent analysis. Sample: MDCK cells were fixed in 4% paraformaldehyde at RT for 15 min. Green: Vimentin stained by Vimentin antibody (NBP1-31327) diluted at 1:500. Blue: Hoechst 33342 staining. Scale bar= 10 μ m.



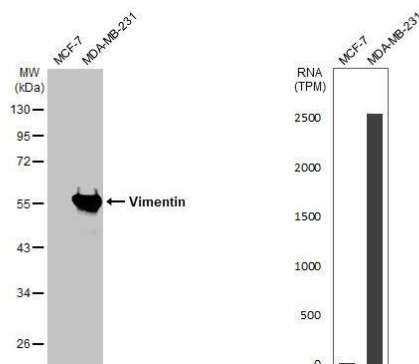
Western Blot: Vimentin Antibody [NBP1-31327] - Wild-type (WT) and Vimentin knockout (KO) 293T cell extracts (30 μ g) were separated by 10% SDS-PAGE, and the membrane was blotted with Vimentin antibody diluted at 1:50000. The HRP-conjugated anti-rabbit IgG antibody was used to detect the primary antibody.



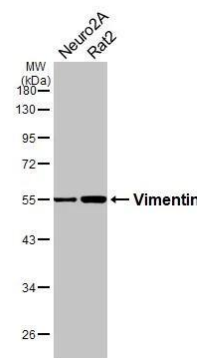
Various whole cell extracts (30 ug) were separated by 10% SDS-PAGE, and the membrane was blotted with Vimentin antibody (NBP1-31327) diluted at 1:50000. The HRP-conjugated anti-rabbit IgG antibody was used to detect the primary antibody. Corresponding RNA expression data for the same cell lines are based on Human Protein Atlas program.



Various whole cell extracts (30 ug) were separated by 10% SDS-PAGE, and the membrane was blotted with Vimentin antibody (NBP1-31327) diluted at 1:5000. The HRP-conjugated anti-rabbit IgG antibody was used to detect the primary antibody. Corresponding RNA expression data for the same cell lines are based on Human Protein Atlas program.



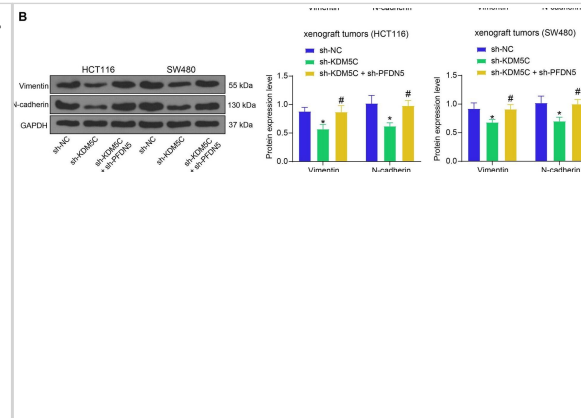
Various whole cell extracts (30 ug) were separated by 10% SDS-PAGE, and the membrane was blotted with Vimentin antibody (NBP1-31327) diluted at 1:2000. The HRP-conjugated anti-rabbit IgG antibody was used to detect the primary antibody.



KDM5C/PFDN5 affects EMT in CRC. A protein levels of Vimentin and N-cadherin in HCT116 and SW480 cells determined by WB analysis (two-way ANOVA); B protein levels of Vimentin and N-cadherin in xenograft tumors determined by western blot analysis (two-way ANOVA). For cellular experiments, three biological replicates were performed. For animal studies, n = 5 in each group. *p < 0.05 vs. the sh-NC group; #p < 0.05 vs. the sh-KDM5C group Image collected and cropped by CiteAb from the following open publication (<https://molmed.biomedcentral.com/articles/10.1186/s10020-023-00775-7>), licensed under a CC-BY license. Not internally tested by Novus Biologicals.



KDM5C/PFDN5 affects EMT in CRC. A protein levels of Vimentin and N-cadherin in HCT116 and SW480 cells determined by WB analysis (two-way ANOVA); B protein levels of Vimentin and N-cadherin in xenograft tumors determined by western blot analysis (two-way ANOVA). For cellular experiments, three biological replicates were performed. For animal studies, n = 5 in each group. *p < 0.05 vs. the sh-NC group; #p < 0.05 vs. the sh-KDM5C group Image collected and cropped by CiteAb from the following open publication (<https://molmed.biomedcentral.com/articles/10.1186/s10020-023-00775-7>), licensed under a CC-BY license. Not internally tested by Novus Biologicals.



Publications

Fulong Yu, Liang Li, Yimei Gu, Song Wang, Lianbang Zhou, Xiaohu Cheng, Heng Jiang, Yang Huang, Yingfeng Zhang, Wenbao Qian, Xianghua Li, Zhining Liu Lysine demethylase 5C inhibits transcription of prefoldin subunit 5 to activate c-Myc signal transduction and colorectal cancer progression *Molecular Medicine* 2024-01-12 [PMID: 38216914]

Yu Z, Dong X, Song M et al. Targeting UBR5 inhibits postsurgical breast cancer lung metastases by inducing CDC73 and p53 mediated apoptosis *International journal of cancer* 2023-10-19 [PMID: 37855385]

Taggi M, Liuzzi F, Botticelli L et al. Evidence for the expression of vasorin in the human female reproductive tissues *Gynecological endocrinology : the official journal of the International Society of Gynecological Endocrinology* 2023-06-09 [PMID: 37331376] (ICC/IF, Human)

Details:

1:200 ICC/IF dilution

Huidrom LD, Dhanaji SN, Pandey S et al. Embryo-Uterine Cross-Talk: Exploration of the Immunomodulatory Mechanism in Buffalo Animals : an open access journal from MDPI 2022-11-14 [PMID: 36428366] (ICC/IF, Bovine)

She M, Li T, Shi W et al. AREG is involved in scleral remodeling in form-deprivation myopia via the ERK1/2-MMP-2 pathway *FASEB journal : official publication of the Federation of American Societies for Experimental Biology* 2022-05-01 [PMID: 35436023] (ICC/IF, Guinea Pig)

Nagel A, Popeda M, Muchlinska A et al. ERalpha36-High Cancer-Associated Fibroblasts as an Unfavorable Factor in Triple-Negative Breast Cancer *Cancers* 2022-04-15 [PMID: 35454913]

H LD, D SN, Pandey S et al. Impact of uterine epithelial cells and its conditioned medium on the in vitro embryo production in buffalo (*Bubalus bubalis*) *Theriogenology* 2022-02-18 [PMID: 35219005] (ICC/IF, Bovine)

Zuppinger C, Gibbons G et al. Characterization of cytoskeleton features and maturation status of cultured human iPSC-derived cardiomyocytes. *Eur J Histochem* 2017-06-21 [PMID: 28735524] (ICC/IF, Human)

Li Z, Zhou Z, Wu X et al. LMP1 promotes nasopharyngeal carcinoma metastasis through NTRK2-mediated anoikis resistance *Am J Cancer Res* 2020-07-01 [PMID: 32775002] (ICC/IF, WB, Human)

Zhou Z, Zhou Q, Wu X, et al. VCAM-1 Secreted from Cancer-Associated Fibroblasts Enhances the Growth and Invasion of Lung Cancer Cells through AKT and MAPK Signaling *Cancer Letters* 2020-01-01 [PMID: 31904479] (WB)

Ren W, Hou J, Yang C et al. Extracellular vesicles secreted by hypoxia pre-challenged mesenchymal stem cells promote non-small cell lung cancer cell growth and mobility as well as macrophage M2 polarization via miR-21-5p delivery *J. Exp. Clin. Cancer Res.* 2019-02-08 [PMID: 30736829] (WB, Human)

Inamdar SM, Hsu SC, Yeaman C. Probing Functional Changes in Exocyst Configuration with Monoclonal Antibodies. *Front Cell Dev Biol* 2016-06-03 [PMID: 27376061] (WB)

More publications at <http://www.novusbio.com/NBP1-31327>



Novus Biologicals USA

10730 E. Briarwood Avenue
Centennial, CO 80112
USA
Phone: 303.730.1950
Toll Free: 1.888.506.6887
Fax: 303.730.1966
nb-customerservice@bio-techne.com

Bio-Techne Canada

21 Canmotor Ave
Toronto, ON M8Z 4E6
Canada
Phone: 905.827.6400
Toll Free: 855.668.8722
Fax: 905.827.6402
canada.inquires@bio-techne.com

Bio-Techne Ltd

19 Barton Lane
Abingdon Science Park
Abingdon, OX14 3NB, United Kingdom
Phone: (44) (0) 1235 529449
Free Phone: 0800 37 34 15
Fax: (44) (0) 1235 533420
info.EMEA@bio-techne.com

General Contact Information

www.novusbio.com
Technical Support: nb-technical@bio-techne.com
Orders: nb-customerservice@bio-techne.com
General: novus@novusbio.com

Products Related to NBP1-31327

NBP2-33376H	Blue Marker Antibody (6F4-F6) [HRP]
HAF008	Goat anti-Rabbit IgG Secondary Antibody [HRP]
NB7160	Goat anti-Rabbit IgG (H+L) Secondary Antibody [HRP]
NBP2-24891	Rabbit IgG Isotype Control

Limitations

This product is for research use only and is not approved for use in humans or in clinical diagnosis. Primary Antibodies are guaranteed for 1 year from date of receipt.

For more information on our 100% guarantee, please visit www.novusbio.com/guarantee

Earn gift cards/discounts by submitting a review: www.novusbio.com/reviews/submit/NBP1-31327

Earn gift cards/discounts by submitting a publication using this product:
www.novusbio.com/publications

