

Product Datasheet

CXCR7/RDC-1 Antibody

NBP1-31309

Unit Size: 100 ul

Aliquot and store at -20C or -80C. Avoid freeze-thaw cycles.

www.novusbio.com



technical@novusbio.com

Publications: 3

Protocols, Publications, Related Products, Reviews, Research Tools and Images at:
www.novusbio.com/NBP1-31309

Updated 9/25/2025 v.20.1

Earn rewards for product
reviews and publications.

Submit a publication at www.novusbio.com/publications

Submit a review at www.novusbio.com/reviews/destination/NBP1-31309



NBP1-31309**CXCR7/RDC-1 Antibody**

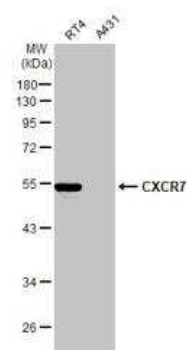
Product Information	
Unit Size	100 ul
Concentration	Concentrations vary lot to lot. See vial label for concentration. If unlisted please contact technical services.
Storage	Aliquot and store at -20C or -80C. Avoid freeze-thaw cycles.
Clonality	Polyclonal
Preservative	0.025% Proclin 300
Isotype	IgG
Purity	Antigen Affinity-purified
Buffer	PBS, 1% BSA, 20% Glycerol
Target Molecular Weight	41 kDa

Product Description	
Description	Novus Biologicals Rabbit CXCR7/RDC-1 Antibody (NBP1-31309) is a polyclonal antibody validated for use in IHC, WB, ELISA, Flow, ICC/IF and IP. Anti-CXCR7/RDC-1 Antibody: Cited in 3 publications. All Novus Biologicals antibodies are covered by our 100% guarantee.
Host	Rabbit
Gene ID	57007
Gene Symbol	ACKR3
Species	Human, Mouse, Rat
Reactivity Notes	Bovine (81%).
Immunogen	Carrier-protein conjugated synthetic peptide encompassing a sequence within the center region of human CXCR7/RDC-1. The exact sequence is proprietary.

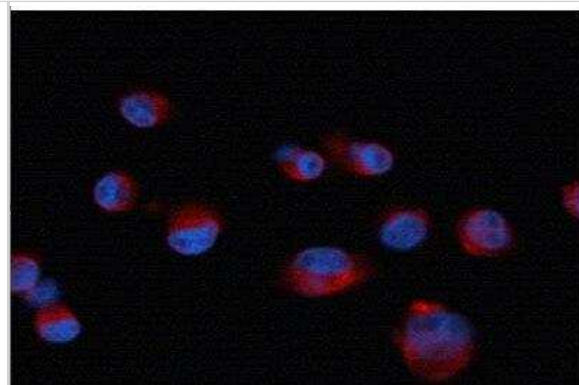
Product Application Details	
Applications	Western Blot, Immunohistochemistry-Paraffin, ELISA, Flow Cytometry, Immunocytochemistry/ Immunofluorescence, Immunohistochemistry, Immunohistochemistry-Frozen, Immunoprecipitation
Recommended Dilutions	Western Blot 1:500-1:3000, Flow Cytometry Assay dependent, ELISA Assay dependent, Immunohistochemistry 1:100-1:1000, Immunocytochemistry/ Immunofluorescence 1:100-1:1000, Immunoprecipitation Assay dependent, Immunohistochemistry-Paraffin 1:100-1:1000, Immunohistochemistry-Frozen Assay dependent

Images

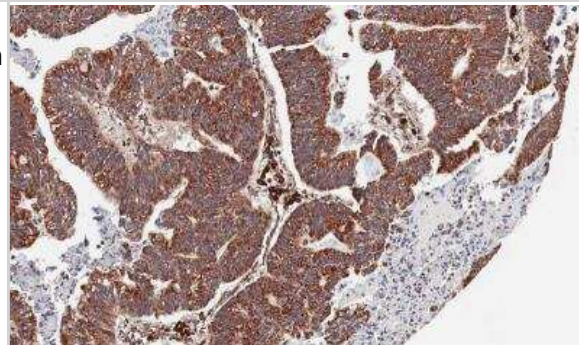
Western Blot: CXCR7/RDC-1 Antibody [NBP1-31309] - Various whole cell extracts (30 ug) were separated by 10% SDS-PAGE, and the membrane was blotted with CXCR7 antibody [C1C2], Internal diluted at 1:5000. The HRP-conjugated anti-rabbit IgG antibody (NBP2-19301) was used to detect the primary antibody.



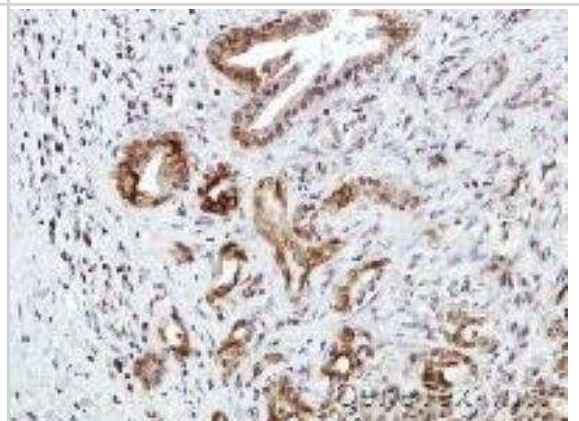
Immunocytochemistry/Immunofluorescence: CXCR7/RDC-1 Antibody [NBP1-31309] - Analysis of human pancreatic cancer cell line, using CXCR7 antibody at 1:50 dilution. Blue: DAPI.



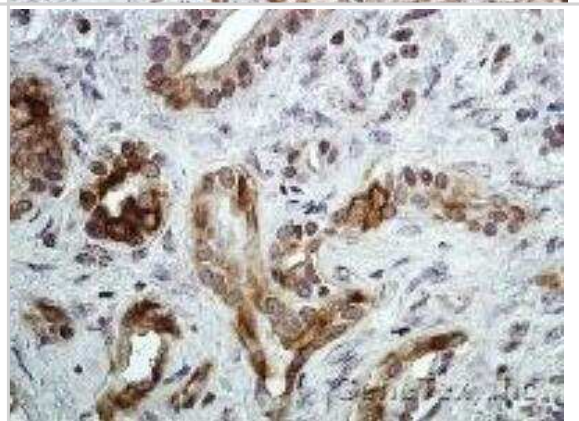
Immunohistochemistry-Paraffin: CXCR7/RDC-1 Antibody [NBP1-31309] - Human gastric cancer, using CXCR7 antibody at 1:100 dilution. Antigen Retrieval: Trilogy™ (EDTA based, pH 8.0) buffer, 15min.



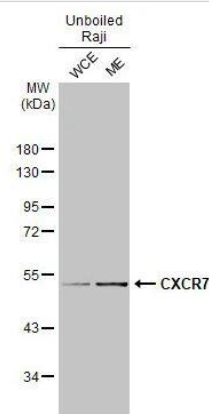
Immunohistochemistry: CXCR7/RDC-1 Antibody [NBP1-31309] - Human pancreatic tumor, using CXCR7 antibody at 1:100 dilution. Antigen Retrieval: Trilogy™ (EDTA based, pH 8.0) buffer, 15min.



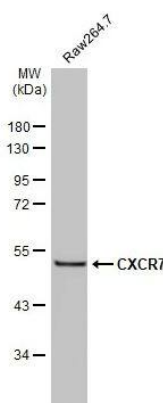
Immunohistochemistry: CXCR7/RDC-1 Antibody [NBP1-31309] - Human pancreatic tumor, using CXCR7 antibody at 1:100 dilution. Antigen Retrieval: Trilogy™ (EDTA based, pH 8.0) buffer, 15min.



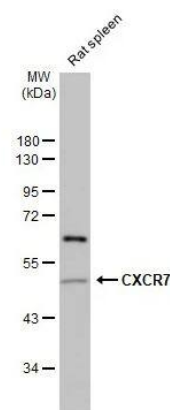
Western Blot: CXCR7/RDC-1 Antibody [NBP1-31309] - Unboiled Raji whole cell and membrane extracts (30 ug) were separated by 10% SDS-PAGE, and the membrane was blotted with CXCR7 antibody [C1C2], Internal diluted at 1:5000. The HRP-conjugated anti-rabbit IgG antibody (NBP2-19301) was used to detect the primary antibody.



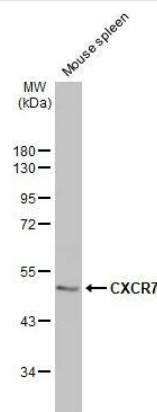
Western Blot: CXCR7/RDC-1 Antibody [NBP1-31309] -Whole cell extract (30 ug) was separated by 10% SDS-PAGE, and the membrane was blotted with CXCR7 antibody [C1C2], Internal diluted at 1:50000. The HRP-conjugated anti-rabbit IgG antibody (NBP2-19301)) was used to detect the primary antibody.



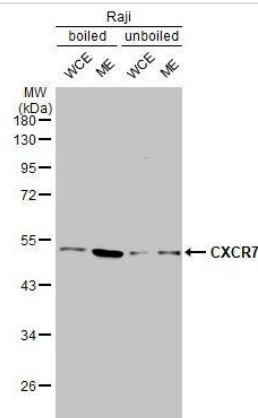
Western Blot: CXCR7/RDC-1 Antibody [NBP1-31309] -Rat tissue extract (50 ug) was separated by 10% SDS-PAGE, and the membrane was blotted with CXCR7 antibody [C1C2], Internal diluted at 1:50000. The HRP-conjugated anti-rabbit IgG antibody (NBP2-19301) was used to detect the primary antibody.



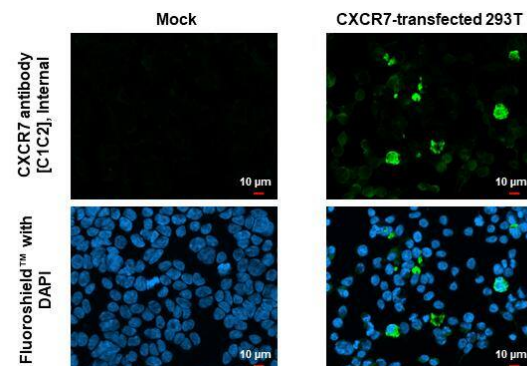
Western Blot: CXCR7/RDC-1 Antibody [NBP1-31309] -Mouse tissue extract (50 ug) was separated by 10% SDS-PAGE, and the membrane was blotted with CXCR7 antibody [C1C2], Internal diluted at 1:50000. The HRP-conjugated anti-rabbit IgG antibody (NBP2-19301) was used to detect the primary antibody.



Western Blot: CXCR7/RDC-1 Antibody [NBP1-31309] -Boiled and unboiled Raji whole cell and membrane extracts (30 ug) were separated by 10% SDS-PAGE, and the membrane was blotted with CXCR7 antibody [C1C2], Internal diluted at 1:5000. The HRP-conjugated anti-rabbit IgG antibody (NBP2-19301) was used to detect the primary antibody, and the signal was developed with Trident ECL plus-Enhanced. (WCE: whole cell extract; ME: membrane extract)



CXCR7/RDC-1 antibody [C1C2], Internal detects CXCR7/RDC-1 protein by immunofluorescent analysis. Sample: Mock and transfected 293T cells were fixed in 4% paraformaldehyde at RT for 15 min. Green: CXCR7/RDC-1 stained by CXCR7/RDC-1 antibody [C1C2], Internal (NBP1-31309) diluted at 1:500. Blue: Fluoroshield with DAPI .



Publications

AK Rohlfing, K Kolb, M Sigle, M Ziegler, A Bild, P Münzer, J Sudmann, V Dicenta, T Harm, MC Manke, S Geue, M Kremser, M Chatterjee, C Liang, H von Eysmon, T Dandekar, D Heinzmann, M Günter, S von Ungern, M Büttcher, T Castor, S Mencl, F Langhauser, K Sies, D Ashour, MC Beker, M Lämmerhofe, SE Autenrieth, TE Schäffer, S Laufer, P Szklanna, P Maguire, M Heikenwald, KAL Müller, DM Hermann, E Kilic, R Stumm, G Ramos, C Kleinschni, O Borst, HF Langer, D Rath, M Gawaz ACKR3 regulates platelet activation and ischemia-reperfusion tissue injury *Nature Communications*, 2022-04-05;13(1):1823. 2022-04-05 [PMID: 35383158]

Katsura M, Shoji F, Okamoto T et al. Correlation between CXCR4/CXCR7/CXCL12 chemokine axis expression and prognosis in lymph-node-positive lung cancer patients *Cancer Sci*. 2018-01-01 [PMID: 29032612] (IHC-P, Human)

Singh RK, Lokeshwar BL. The IL-8-regulated chemokine receptor CXCR7 stimulates EGFR signaling to promote prostate cancer growth. *Cancer Res* 2011-05-01 [PMID: 21398406] (WB, ICC/IF, FC, Human)



Novus Biologicals USA

10730 E. Briarwood Avenue
Centennial, CO 80112
USA
Phone: 303.730.1950
Toll Free: 1.888.506.6887
Fax: 303.730.1966
nb-customerservice@bio-techne.com

Bio-Techne Canada

21 Canmotor Ave
Toronto, ON M8Z 4E6
Canada
Phone: 905.827.6400
Toll Free: 855.668.8722
Fax: 905.827.6402
canada.inquires@bio-techne.com

Bio-Techne Ltd

19 Barton Lane
Abingdon Science Park
Abingdon, OX14 3NB, United Kingdom
Phone: (44) (0) 1235 529449
Free Phone: 0800 37 34 15
Fax: (44) (0) 1235 533420
info.EMEA@bio-techne.com

General Contact Information

www.novusbio.com
Technical Support: nb-technical@bio-techne.com
Orders: nb-customerservice@bio-techne.com
General: novus@novusbio.com

Products Related to NBP1-31309

NBP2-33376H	Blue Marker Antibody (6F4-F6) [HRP]
HAF008	Goat anti-Rabbit IgG Secondary Antibody [HRP]
NB7160	Goat anti-Rabbit IgG (H+L) Secondary Antibody [HRP]
NBP2-24891	Rabbit IgG Isotype Control

Limitations

This product is for research use only and is not approved for use in humans or in clinical diagnosis. Primary Antibodies are guaranteed for 1 year from date of receipt.

For more information on our 100% guarantee, please visit www.novusbio.com/guarantee

Earn gift cards/discounts by submitting a review: www.novusbio.com/reviews/submit/NBP1-31309

Earn gift cards/discounts by submitting a publication using this product:
www.novusbio.com/publications

