

Product Datasheet

CMTM6 Antibody - BSA Free

NBP1-31183

Unit Size: 100 ul

Aliquot and store at -20C or -80C. Avoid freeze-thaw cycles.

www.novusbio.com



technical@novusbio.com

Publications: 7

Protocols, Publications, Related Products, Reviews, Research Tools and Images at:
www.novusbio.com/NBP1-31183

Updated 11/6/2025 v.20.1

Earn rewards for product
reviews and publications.

Submit a publication at www.novusbio.com/publications

Submit a review at www.novusbio.com/reviews/destination/NBP1-31183



NBP1-31183

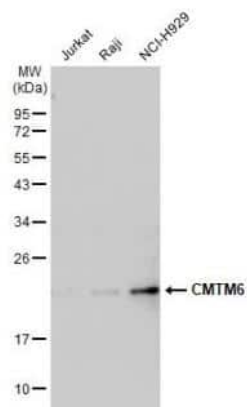
CMTM6 Antibody - BSA Free

Product Information	
Unit Size	100 ul
Concentration	Concentrations vary lot to lot. See vial label for concentration. If unlisted please contact technical services.
Storage	Aliquot and store at -20C or -80C. Avoid freeze-thaw cycles.
Clonality	Polyclonal
Preservative	0.025% Proclin 300
Isotype	IgG
Purity	Antigen Affinity-purified
Buffer	PBS, 20% Glycerol
Target Molecular Weight	20 kDa
Product Description	
Description	Novus Biologicals Rabbit CMTM6 Antibody - BSA Free (NBP1-31183) is a polyclonal antibody validated for use in IHC, WB and ICC/IF. Anti-CMTM6 Antibody: Cited in 7 publications. All Novus Biologicals antibodies are covered by our 100% guarantee.
Host	Rabbit
Gene ID	54918
Gene Symbol	CMTM6
Species	Human
Reactivity Notes	Mouse reactivity reported in (PMID:32874775).
Immunogen	Carrier-protein conjugated synthetic peptide encompassing a sequence within the C-terminus region of human CMTM6. The exact sequence is proprietary.
Product Application Details	
Applications	Western Blot, Immunohistochemistry-Paraffin, Immunocytochemistry/Immunofluorescence, Immunohistochemistry
Recommended Dilutions	Western Blot 1:500-1:3000, Immunohistochemistry 1:100-1:1000, Immunocytochemistry/ Immunofluorescence 1:100-1:1000, Immunohistochemistry-Paraffin 1:100-1:1000

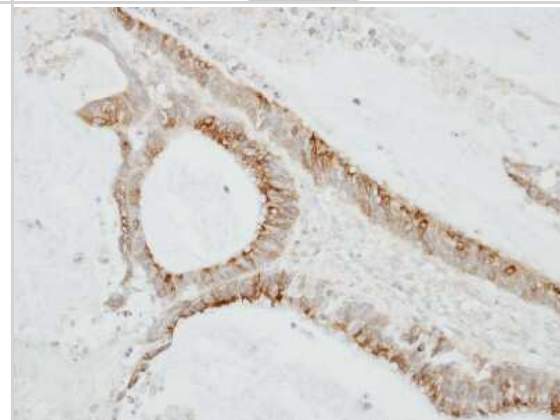


Images

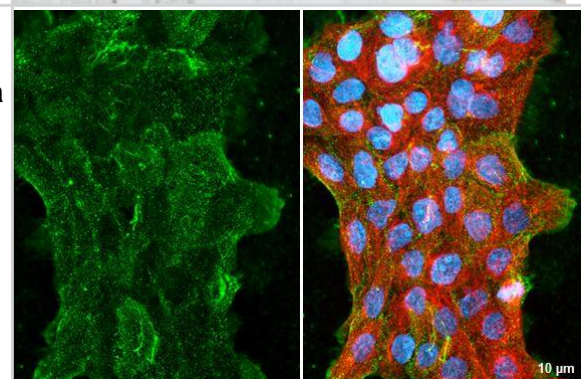
Western Blot: CMTM6 Antibody [NBP1-31183] - Various whole cell extracts (30 ug) were separated by 12% SDS-PAGE, and the membrane was blotted with CMTM6 antibody [C1C3] diluted at 1:1000. The HRP-conjugated anti-rabbit IgG antibody (NBP2-19301) was used to detect the primary antibody.



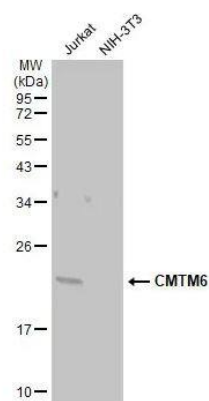
Immunohistochemistry-Paraffin: CMTM6 Antibody [NBP1-31183] - TW2.6 xenograft, using CMTM6 antibody at 1:100 dilution. Antigen Retrieval: Trilogy™ (EDTA based, pH 8.0) buffer, 15min.



Immunocytochemistry/Immunofluorescence: CMTM6 Antibody [NBP1-31183] -A431 cells were fixed in ice-cold MeOH for 5 min. Green: CMTM6 stained by CMTM6 antibody [C1C3] diluted at 1:500. Red: alpha Tubulin, a cytoskeleton marker, stained by alpha Tubulin antibody [114] diluted at 1:1000. Blue: Fluoroshield with DAPI.



Western Blot: CMTM6 Antibody [NBP1-31183] -Various whole cell extracts (30 ug) were separated by 12% SDS-PAGE, and the membrane was blotted with CMTM6 antibody [C1C3] diluted at 1:1000. The HRP-conjugated anti-rabbit IgG antibody (NBP2-19301) was used to detect the primary antibody.



Publications

Wei L, Wei Q, Yang X, Zhou P. CMTM6 knockdown prevents glioma progression by inactivating the mTOR pathway *Annals of Translational Medicine* 2022-02-01 [PMID: 35280358] (Immunohistochemistry, Human)

Dai M, Lan T, Chen H et al. Nomogram based on CMTM6 expression and clinical characteristics to predict postoperative overall survival in patients with hepatocellular carcinoma *Histology and histopathology* 2023-06-19 [PMID: 37366540] (IHC)

Qian S, Xu J, Zhao S, Yang P CMTM6: Increased Circulating Level and Up-regulated Expression in Labial Salivary Glands in Patients with Primary Sjogren's Syndrome *Clinical and Experimental* 2021-01-01 [PMID: 35020842]

Li X, Chen L, Gu C et al. CMTM6 significantly relates to PD-L1 and predicts the prognosis of gastric cancer patients *PeerJ* 2020-08-17 [PMID: 32874775] (IF/IHC, Mouse)

Shang X, Li J, Wang H et al. CMTM6 is positively correlated with PD-L1 expression and immune cells infiltration in lung squamous carcinoma *Int. Immunopharmacol.* 2020-08-28 [PMID: 32866782] (IF/IHC, Human)

Wang H, Gao J, Zhang R et al. Molecular and immune characteristics for lung adenocarcinoma patients with CMTM6 overexpression *Int. Immunopharmacol.* 2020-04-08 [PMID: 32278132] (IF/IHC, Human)

Zhu X, Qi G, Li C et al. Expression and Clinical Significance of CMTM6 in Hepatocellular Carcinoma *DNA Cell Biol.* 2018-12-18 [PMID: 30562063] (IF/IHC, Human)





Novus Biologicals USA

10730 E. Briarwood Avenue
Centennial, CO 80112
USA
Phone: 303.730.1950
Toll Free: 1.888.506.6887
Fax: 303.730.1966
nb-customerservice@bio-techne.com

Bio-Techne Canada

21 Canmotor Ave
Toronto, ON M8Z 4E6
Canada
Phone: 905.827.6400
Toll Free: 855.668.8722
Fax: 905.827.6402
canada.inquires@bio-techne.com

Bio-Techne Ltd

19 Barton Lane
Abingdon Science Park
Abingdon, OX14 3NB, United Kingdom
Phone: (44) (0) 1235 529449
Free Phone: 0800 37 34 15
Fax: (44) (0) 1235 533420
info.EMEA@bio-techne.com

General Contact Information

www.novusbio.com
Technical Support: nb-technical@bio-techne.com
Orders: nb-customerservice@bio-techne.com
General: novus@novusbio.com

Products Related to NBP1-31183

NBP2-33376H	Blue Marker Antibody (6F4-F6) [HRP]
HAF008	Goat anti-Rabbit IgG Secondary Antibody [HRP]
NB7160	Goat anti-Rabbit IgG (H+L) Secondary Antibody [HRP]
NBP2-24891	Rabbit IgG Isotype Control

Limitations

This product is for research use only and is not approved for use in humans or in clinical diagnosis. Primary Antibodies are guaranteed for 1 year from date of receipt.

For more information on our 100% guarantee, please visit www.novusbio.com/guarantee

Earn gift cards/discounts by submitting a review: www.novusbio.com/reviews/submit/NBP1-31183

Earn gift cards/discounts by submitting a publication using this product:
www.novusbio.com/publications

